

Anti-LSM11 antibody [OTI2G7] ab236396

2 图像

概述

产品名称	Anti-LSM11抗体[OTI2G7]
描述	小鼠单克隆抗体[OTI2G7] to LSM11
宿主	Mouse
经测试应用	适用于: WB, IHC-P
种属反应性	与反应: Human
免疫原	Recombinant full length protein corresponding to Human LSM11 aa 1 to the C-terminus. Produces in E.coli (NP_775762). Database link: P83369
阳性对照	WB: pCMV6-ENTRY LSM11 transfected HEK-293T cell lysate. IHC-P: Human prostate carcinoma tissue.
常规说明	<p>The Life Science industry has been in the grips of a reproducibility crisis for a number of years. Abcam is leading the way in addressing this with our range of recombinant monoclonal antibodies and knockout edited cell lines for gold-standard validation. Please check that this product meets your needs before purchasing.</p> <p>If you have any questions, special requirements or concerns, please send us an inquiry and/or contact our Support team ahead of purchase. Recommended alternatives for this product can be found below, along with publications, customer reviews and Q&As</p>

 [Run BLAST with](#)

 [Run BLAST with](#)

性能

形式	Liquid
存放说明	Shipped at 4°C. Store at +4°C short term (1-2 weeks). Upon delivery aliquot. Store at -20°C long term. Avoid freeze / thaw cycle.
存储溶液	pH: 7.30 Preservative: 0.02% Sodium azide Constituents: PBS, 1% BSA, 50% Glycerol
纯度	Affinity purified
纯化说明	Purified from cell culture supernatant.
克隆	单克隆
克隆编号	OTI2G7

应用

The Abpromise guarantee

Abpromise™承诺保证使用ab236396于以下的经测试应用

“应用说明”部分下显示的仅为推荐的起始稀释度;实际最佳的稀释度/浓度应由使用者检定。

应用	Ab评论	说明
WB		1/2000. Predicted molecular weight: 40 kDa.
IHC-P		1/2000. Heat-induced epitope retrieval by 1mM EDTA in 10mM Tris buffer (pH8.5) at 120°C for 3 minutes.

靶标

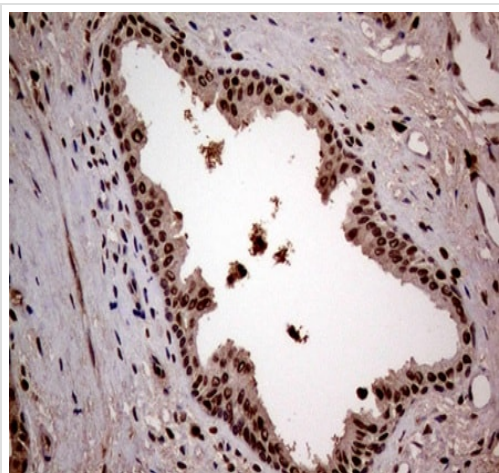
相关性

LSM11 is a 39.5 kDa protein that is a component of a specialized SMN complex also containing Lsm10. Lsm11 not only specifies the assembly of the U7 Sm core but also fulfills an important role in U7 snRNP-mediated histone mRNA processing.

细胞定位

Nuclear

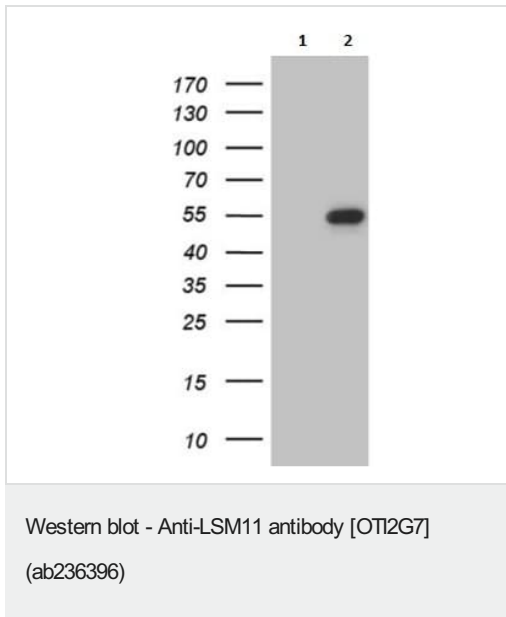
图片



Paraffin-embedded human prostate carcinoma tissue stained for LSM11 using ab236396 at 1/2000 in immunohistochemical analysis.

Heat-induced epitope retrieval was performed using 1 mM EDTA in 10 mM TRis buffer (pH 8.5) at 120°C for 3 minutes.

Immunohistochemistry (Formalin/PFA-fixed paraffin-embedded sections) - Anti-LSM11 antibody [OT12G7] (ab236396)



All lanes : Anti-LSM11 antibody [OT12G7] (ab236396) at 1/2000 dilution

Lane 1 : pCMV6-ENTRY control transfected HEK-293T (human epithelial cell line from embryonic kidney transformed with large T antigen) cell lysate

Lane 2 : pCMV6-ENTRY LSM11 transfected HEK-293T (human epithelial cell line from embryonic kidney transformed with large T antigen) cell lysate

Lysates/proteins at 5 µg per lane.

Predicted band size: 40 kDa

Please note: All products are "FOR RESEARCH USE ONLY. NOT FOR USE IN DIAGNOSTIC PROCEDURES"

Our Abpromise to you: Quality guaranteed and expert technical support

- Replacement or refund for products not performing as stated on the datasheet
- Valid for 12 months from date of delivery
- Response to your inquiry within 24 hours
- We provide support in Chinese, English, French, German, Japanese and Spanish
- Extensive multi-media technical resources to help you
- We investigate all quality concerns to ensure our products perform to the highest standards

If the product does not perform as described on this datasheet, we will offer a refund or replacement. For full details of the Abpromise, please visit <https://www.abcam.cn/abpromise> or contact our technical team.

Terms and conditions

- Guarantee only valid for products bought direct from Abcam or one of our authorized distributors