

Anti-LRP1 antibody ab168454

[1 Abreviews](#) [2 References](#) [3 图像](#)

概述

产品名称	Anti-LRP1抗体
描述	小鼠多克隆抗体to LRP1
宿主	Mouse
经测试应用	适用于: WB, IHC-P, ICC/IF
种属反应性	与反应: Human 预测可用于: Mouse 
免疫原	Recombinant fragment corresponding to amino acids 1-292 of Human LRP1. (AAH45107.1)  Run BLAST with   Run BLAST with 
阳性对照	Transfected 293T cell lysate; Human endometrium tissue; HeLa cells.
常规说明	<p>The Life Science industry has been in the grips of a reproducibility crisis for a number of years. Abcam is leading the way in addressing this with our range of recombinant monoclonal antibodies and knockout edited cell lines for gold-standard validation. Please check that this product meets your needs before purchasing.</p> <p>If you have any questions, special requirements or concerns, please send us an inquiry and/or contact our Support team ahead of purchase. Recommended alternatives for this product can be found below, along with publications, customer reviews and Q&As</p>

性能

形式	Liquid
存放说明	Shipped at 4°C. Store at +4°C short term (1-2 weeks). Upon delivery aliquot. Store at -20°C long term.
存储溶液	pH: 7.4 Constituent: 100% PBS
纯度	Protein A purified
克隆	多克隆
同种型	IgG

应用

The Abpromise guarantee

Abpromise™承诺保证使用ab168454于以下的经测试应用

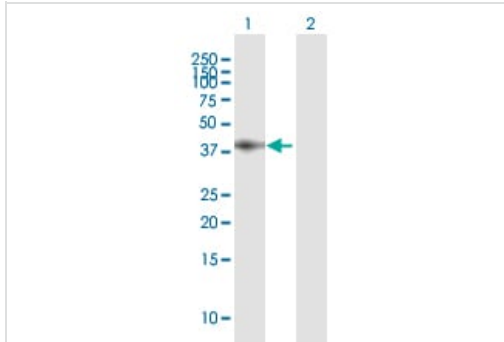
“应用说明”部分 下显示的仅为推荐的起始稀释度;实际最佳的稀释度/浓度应由使用者检定。

应用	Ab评论	说明
WB		Use a concentration of 1 µg/ml. Detects a band of approximately 32 kDa.
IHC-P		Use a concentration of 3 µg/ml. Perform heat mediated antigen retrieval with citrate buffer pH 6 before commencing with IHC staining protocol.
ICC/IF		Use a concentration of 10 µg/ml.

靶标

功能	Endocytic receptor involved in endocytosis and in phagocytosis of apoptotic cells. Required for early embryonic development. Involved in cellular lipid homeostasis. Involved in the plasma clearance of chylomicron remnants and activated LRPAP1 (alpha 2-macroglobulin), as well as the local metabolism of complexes between plasminogen activators and their endogenous inhibitors. May modulate cellular events, such as APP metabolism, kinase-dependent intracellular signaling, neuronal calcium signaling as well as neurotransmission. Functions as a receptor for Pseudomonas aeruginosa exotoxin A.
组织特异性	Most abundant in liver, brain and lung.
序列相似性	Belongs to the LDLR family. Contains 22 EGF-like domains. Contains 31 LDL-receptor class A domains. Contains 34 LDL-receptor class B repeats.
翻译后修饰	Cleaved into a 85 kDa membrane-spanning subunit (LRP-85) and a 515 kDa large extracellular domain (LRP-515) that remains non-covalently associated. Gamma-secretase-dependent cleavage of LRP-85 releases the intracellular domain from the membrane. The N-terminus is blocked. Phosphorylated on serine and threonine residues. Phosphorylated on tyrosine residues upon stimulation with PDGF. Tyrosine phosphorylation promotes interaction with SHC1.
细胞定位	Cytoplasm. Nucleus. After cleavage, the intracellular domain (LRPICD) is detected both in the cytoplasm and in the nucleus and Cell membrane. Membrane, coated pit.

图片



Western blot - Anti-LRP1 antibody (ab168454)

All lanes : Anti-LRP1 antibody (ab168454) at 1 $\mu\text{g/ml}$

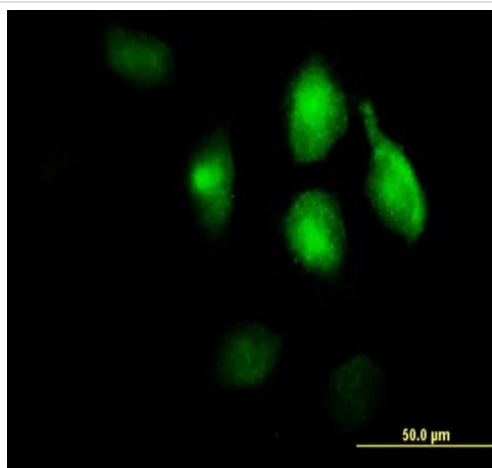
Lane 1 : LRP1 transfected 293T cell lysate

Lane 2 : Non-transfected 293T cell lysate

Lysates/proteins at 15 μl per lane.

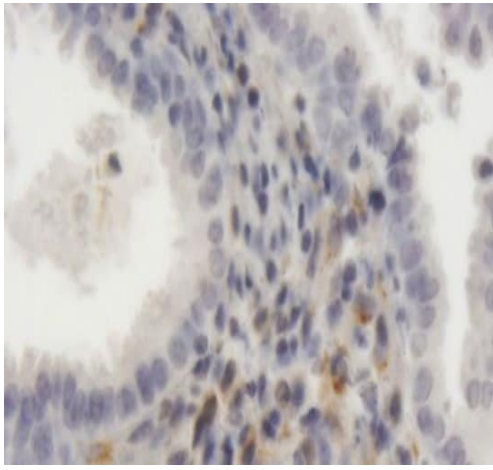
Secondary

All lanes : Goat Anti-mouse HRP at 1/2500 dilution



Immunocytochemistry/ Immunofluorescence - Anti-LRP1 antibody (ab168454)

Immunocytochemistry/Immunofluorescence analysis of HeLa cells labeling LRP1 with ab168454 at 10 $\mu\text{g/ml}$.



Immunohistochemistry analysis of Formalin-fixed, paraffin-embedded Human endometrium tissue labeling LRP1 with ab168454 at 3µg/ml.

Immunohistochemistry (Formalin/PFA-fixed paraffin-embedded sections) - Anti-LRP1 antibody (ab168454)

Please note: All products are "FOR RESEARCH USE ONLY. NOT FOR USE IN DIAGNOSTIC PROCEDURES"

Our Abpromise to you: Quality guaranteed and expert technical support

- Replacement or refund for products not performing as stated on the datasheet
- Valid for 12 months from date of delivery
- Response to your inquiry within 24 hours
- We provide support in Chinese, English, French, German, Japanese and Spanish
- Extensive multi-media technical resources to help you
- We investigate all quality concerns to ensure our products perform to the highest standards

If the product does not perform as described on this datasheet, we will offer a refund or replacement. For full details of the Abpromise, please visit <https://www.abcam.cn/abpromise> or contact our technical team.

Terms and conditions

- Guarantee only valid for products bought direct from Abcam or one of our authorized distributors