


Anti-LOX antibody ab223488

[1 References](#) [1 图像](#)

概述

产品名称	Anti-LOX抗体
描述	山羊多克隆抗体to LOX
宿主	Goat
经测试应用	适用于: WB
种属反应性	与反应: Human 预测可用于: Mouse, Rat, Pig 
免疫原	Synthetic peptide corresponding to Human LOX aa 200-300 (internal sequence) (Cysteine residue). NP_002308.2; NP_001171573.1. Database link: P28300 Run BLAST with Run BLAST with
阳性对照	WB: Human placenta and heart lysates.
常规说明	<p>The Life Science industry has been in the grips of a reproducibility crisis for a number of years. Abcam is leading the way in addressing this with our range of recombinant monoclonal antibodies and knockout edited cell lines for gold-standard validation. Please check that this product meets your needs before purchasing.</p> <p>If you have any questions, special requirements or concerns, please send us an inquiry and/or contact our Support team ahead of purchase. Recommended alternatives for this product can be found below, along with publications, customer reviews and Q&As</p>

性能

形式	Liquid
存放说明	Shipped at 4°C. Store at +4°C short term (1-2 weeks). Upon delivery aliquot. Store at -20°C long term. Avoid freeze / thaw cycle.
存储溶液	pH: 7.30 Preservative: 0.02% Sodium azide Constituents: 0.5% BSA, Tris buffered saline
纯度	Immunogen affinity purified
纯化说明	ab223488 was purified from goat serum by ammonium sulphate precipitation followed by antigen affinity chromatography using the immunizing peptide.
克隆	多克隆

应用

The Abpromise guarantee

Abpromise™承诺保证使用ab223488于以下的经测试应用

“应用说明”部分下显示的仅为推荐的起始稀释度;实际最佳的稀释度/浓度应由使用者检定。

应用	Ab评论	说明
WB		Use a concentration of 0.3 - 1 µg/ml. Detects a band of approximately 30-33 kDa (predicted molecular weight: 46.9 kDa). 1 hour primary incubation is recommended for this product.

靶标

功能

Responsible for the post-translational oxidative deamination of peptidyl lysine residues in precursors to fibrous collagen and elastin. In addition to cross-linking of extracellular matrix proteins, may have a direct role in tumor suppression.

组织特异性

Heart, placenta, skeletal muscle, kidney, lung and pancreas.

疾病相关

Defects in LOX may be a cause of cutis laxa autosomal recessive type 1 (ARCL1) [MIM:219100].

序列相似性

Belongs to the lysyl oxidase family.

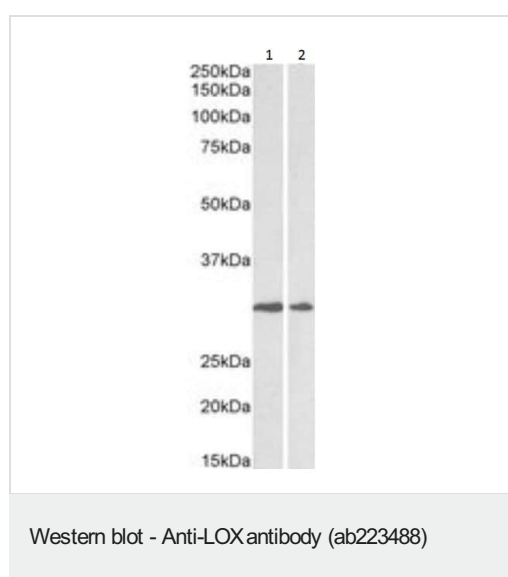
翻译后修饰

The lysine tyrosylquinone cross-link (LTQ) is generated by condensation of the epsilon-amino group of a lysine with a topaquinone produced by oxidation of tyrosine.

细胞定位

Secreted > extracellular space.

图片



All lanes : Anti-LOX antibody (ab223488) at 0.5 µg/ml

Lane 1 : Human heart lysate in RIPA buffer

Lane 2 : Human placenta lysate in RIPA buffer

Lysates/proteins at 35 µg per lane.

Developed using the ECL technique.

Predicted band size: 46.9 kDa

Observed band size: 30-33 kDa

Primary incubation was 1 hour.

Please note: All products are "FOR RESEARCH USE ONLY. NOT FOR USE IN DIAGNOSTIC PROCEDURES"

Our Abpromise to you: Quality guaranteed and expert technical support

- Replacement or refund for products not performing as stated on the datasheet
- Valid for 12 months from date of delivery
- Response to your inquiry within 24 hours

- We provide support in Chinese, English, French, German, Japanese and Spanish
- Extensive multi-media technical resources to help you
- We investigate all quality concerns to ensure our products perform to the highest standards

If the product does not perform as described on this datasheet, we will offer a refund or replacement. For full details of the Abpromise, please visit <https://www.abcam.cn/abpromise> or contact our technical team.

Terms and conditions

- Guarantee only valid for products bought direct from Abcam or one of our authorized distributors