

Anti-LMBRD1 antibody ab105419

3 图像

概述

产品名称	Anti-LMBRD1抗体
描述	兔多克隆抗体to LMBRD1
宿主	Rabbit
特异性	LMBRD1 antibody is predicted to not cross-react with other LMBRD1 family members.
经测试应用	适用于: ICC/IF, WB, IHC-P
种属反应性	与反应: Human
免疫原	An 18 amino acid peptide from the C-terminus of Human LMBRD1 (NP_060838)
阳性对照	Human Brain Tissue Lysate
常规说明	<p>The Life Science industry has been in the grips of a reproducibility crisis for a number of years. Abcam is leading the way in addressing this with our range of recombinant monoclonal antibodies and knockout edited cell lines for gold-standard validation. Please check that this product meets your needs before purchasing.</p> <p>If you have any questions, special requirements or concerns, please send us an inquiry and/or contact our Support team ahead of purchase. Recommended alternatives for this product can be found below, along with publications, customer reviews and Q&As</p>

性能

形式	Liquid
存放说明	Shipped at 4°C. Store at +4°C.
存储溶液	<p>pH: 7.2</p> <p>Preservative: 0.02% Sodium azide</p> <p>Constituent: PBS</p>
纯度	Immunogen affinity purified
克隆	多克隆
同种型	IgG

应用

The Abpromise guarantee

Abpromise™ 承诺保证使用ab105419于以下的经测试应用

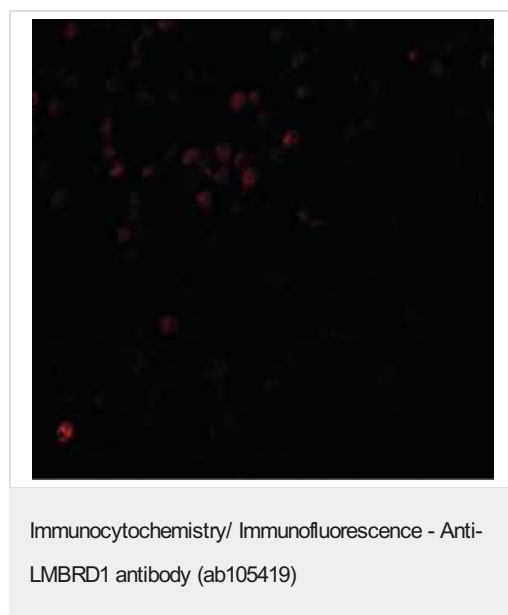
“应用说明”部分 下显示的仅为推荐的起始稀释度;实际最佳的稀释度/浓度应由使用者检定。

应用	Ab评论	说明
ICC/IF		Use a concentration of 20 µg/ml.
WB		Use a concentration of 1 - 2 µg/ml. Predicted molecular weight: 61 kDa.
IHC-P		Use at an assay dependent concentration.

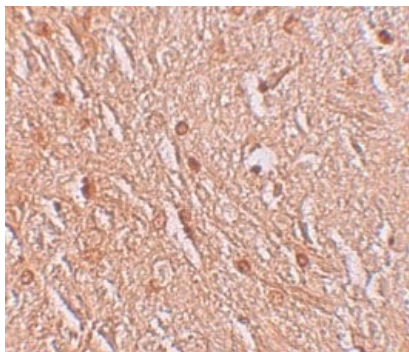
靶标

功能	Probable lysosomal cobalamin transporter. Required to export cobalamin from lysosomes allowing its conversion to cofactors. Isoform 3 may play a role in the assembly of hepatitis delta virus (HDV).
组织特异性	Isoform 3 is expressed in liver.
疾病相关	Defects in LMBRD1 are the cause of methylmalonic aciduria and homocystinuria type cblF (MMAFHC) [MIM:277380]; also known as homocystinuria-megaloblastic anemia complementation type F. MMAFHC is a disorder of cobalamin metabolism characterized by decreased levels of the coenzymes adenosylcobalamin (AdoCbl) and methylcobalamin (MeCbl). It is due to accumulation of free cobalamin in lysosomes, thus hindering its conversion to cofactors. Clinical features include developmental delay, stomatitis, glossitis, seizures and methylmalonic aciduria responsive to vitamin B12.
序列相似性	Belongs to the LMR family. LMBRD1 subfamily.
翻译后修饰	N-glycosylated.
细胞定位	Lysosome membrane.

图片

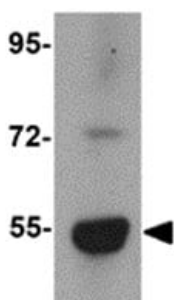


Immunofluorescence of LMBRD1 in Human brain tissue with ab105419 at 20 ug/mL.



Immunohistochemistry of LMBRD1 in Human brain tissue with ab105419 at 2.5 µg/mL.

Immunohistochemistry (Formalin/PFA-fixed paraffin-embedded sections) - Anti-LMBRD1 antibody (ab105419)



Anti-LMBRD1 antibody (ab105419) at 1 µg/ml + Human brain tissue lysate at 15 µg

Predicted band size: 61 kDa

Western blot - Anti-LMBRD1 antibody (ab105419)

Please note: All products are "FOR RESEARCH USE ONLY. NOT FOR USE IN DIAGNOSTIC PROCEDURES"

Our Abpromise to you: Quality guaranteed and expert technical support

- Replacement or refund for products not performing as stated on the datasheet
- Valid for 12 months from date of delivery
- Response to your inquiry within 24 hours
- We provide support in Chinese, English, French, German, Japanese and Spanish
- Extensive multi-media technical resources to help you
- We investigate all quality concerns to ensure our products perform to the highest standards

If the product does not perform as described on this datasheet, we will offer a refund or replacement. For full details of the Abpromise, please visit <https://www.abcam.cn/abpromise> or contact our technical team.

Terms and conditions

- Guarantee only valid for products bought direct from Abcam or one of our authorized distributors