

Anti-LKB1 antibody [Ley 37D/G6] ab15095

敲除验证

★★★★★ 12 Abreviews 37 References 2 图像

概述

产品名称	Anti-LKB1抗体[Ley 37D/G6]
描述	小鼠单克隆抗体[Ley 37D/G6] to LKB1
宿主	Mouse
特异性	This antibody detects a single clean band representing LKB1/STK11 in Western blots on cells expressing LKB1.
经测试应用	适用于: WB
种属反应性	与反应: Mouse, Human
免疫原	Recombinant full length protein corresponding to Human LKB1. Database link: Q15831
阳性对照	HAP1 and MEF cell lysates.
常规说明	<p>The Life Science industry has been in the grips of a reproducibility crisis for a number of years. Abcam is leading the way in addressing this with our range of recombinant monoclonal antibodies and knockout edited cell lines for gold-standard validation. Please check that this product meets your needs before purchasing.</p> <p>If you have any questions, special requirements or concerns, please send us an inquiry and/or contact our Support team ahead of purchase. Recommended alternatives for this product can be found below, along with publications, customer reviews and Q&As</p>

性能

形式	Liquid
存放说明	Shipped at 4°C. Store at +4°C. Do Not Freeze.
存储溶液	pH: 7.4 Preservative: 0.02% Sodium azide Constituents: 1% BSA, PBS
克隆	单克隆
克隆编号	Ley 37D/G6
同种型	IgG2b

应用

The Abpromise guarantee **Abpromise™**承诺保证使用ab15095于以下的经测试应用

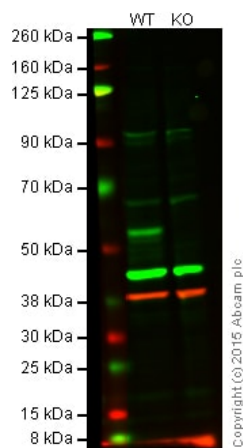
“应用说明”部分 下显示的仅为推荐的起始稀释度;实际最佳的稀释度/浓度应由使用者检定。

应用	Ab评论	说明
WB	★★★★★ (6)	1/100 - 1/1000. Detects a band of approximately 50 kDa (predicted molecular weight: 48.6 kDa).

靶标

功能	Essential role in G1 cell cycle arrest. Phosphorylates and activates members of the AMPK-related subfamily of protein kinases. Tumor suppressor.
组织特异性	Ubiquitously expressed. Strongest expression in testis and fetal liver.
疾病相关	<p>Defects in STK11 are a cause of Peutz-Jeghers syndrome (PJS) [MIM:175200]. PJS is a rare hereditary disease in which there is predisposition to benign and malignant tumors of many organ systems. PJS is an autosomal dominant disorder characterized by melanocytic macules of the lips, multiple gastrointestinal hamartomatous polyps and an increased risk for various neoplasms, including gastrointestinal cancer.</p> <p>Defects in STK11 have been associated with testicular tumors (TEST) [MIM:273300]. A common solid malignancy in males. Germ cell tumors of the testis constitute 95% of all testicular neoplasms.</p>
序列相似性	Belongs to the protein kinase superfamily. CAMK Ser/Thr protein kinase family. LKB1 subfamily. Contains 1 protein kinase domain.
翻译后修饰	Phosphorylated by a cAMP-dependent protein kinase.
细胞定位	Nucleus. Cytoplasm. Relocates to the cytoplasm when bound to CAB39 and STRAD or CAB39 and ALS2CR2.

图片



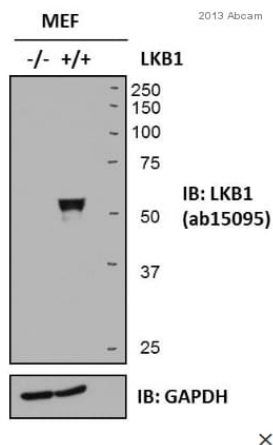
Western blot - Anti-LKB1 antibody [Ley 37D/G6] (ab15095)

Lane 1: Wild-type HAP1 cell lysate (20 µg)

Lane 2: LKB1 knockout HAP1 cell lysate (20 µg)

Lanes 1 and 2: Merged signal (red and green). Green - ab15095 observed at 50 kDa. Red - loading control, **ab181602**, observed at 37 kDa.

ab15095 was shown to recognize LKB1 when LKB1 knockout samples were used, along with additional cross-reactive bands. Wild-type and LKB1 knockout samples were subjected to SDS-PAGE. ab15095 and **ab181602** (loading control to LKB1) were diluted 1/100 and 1/10 000 and incubated overnight at 4°C. Blots were developed with Goat anti-Mouse IgG H&L (IRDye® 800CW) preadsorbed (**ab216772**) and Goat Anti-Rabbit IgG H&L (IRDye® 680RD) preadsorbed (**ab216777**) secondary antibodies at 1/10 000 dilution for 1 h at room temperature before imaging.



Western blot - Anti-LKB1 antibody [Ley 37D/G6] (ab15095)

Image courtesy of anonymous abreviewer

All lanes : Anti-LKB1 antibody [Ley 37D/G6] (ab15095) at 1/1000 dilution

All lanes :

Secondary

All lanes : Polyclonal goat anti-mouse conjugated with horse radish peroxidase.

Predicted band size: 48.6 kDa

Observed band size: 55 kDa

Negative control (Lane 1): LKB1 knockout MEF cells.

Positive control (Lane 2): wildtype MEF cells.

Blocking step: 5% milk as blocking agent for 1 hour at 25 °C.

Incubation: 16 hours at 4 °C, using 5% milk in TBS/0.1 Tween as diluent.

Please note: All products are "FOR RESEARCH USE ONLY. NOT FOR USE IN DIAGNOSTIC PROCEDURES"

Our Abpromise to you: Quality guaranteed and expert technical support

- Replacement or refund for products not performing as stated on the datasheet
- Valid for 12 months from date of delivery

- Response to your inquiry within 24 hours
- We provide support in Chinese, English, French, German, Japanese and Spanish
- Extensive multi-media technical resources to help you
- We investigate all quality concerns to ensure our products perform to the highest standards

If the product does not perform as described on this datasheet, we will offer a refund or replacement. For full details of the Abpromise, please visit <https://www.abcam.cn/abpromise> or contact our technical team.

Terms and conditions

- Guarantee only valid for products bought direct from Abcam or one of our authorized distributors