

Anti-LKB1 antibody [EPR19379] ab199970

敲除验证 重组 RabMAb

★★★★★ [1 Abreviews](#) [8 References](#) [7 图像](#)

概述

产品名称	Anti-LKB1抗体[EPR19379]
描述	兔单克隆抗体[EPR19379] to LKB1
宿主	Rabbit
经测试应用	适用于: WB, IP
种属反应性	与反应: Human
免疫原	Recombinant fragment. This information is proprietary to Abcam and/or its suppliers.
阳性对照	WB: HEK-293T, Jurkat and K562 whole cell lysates; Human brain, human testis, fetal heart, fetal kidney and fetal testis lysates. IP: K562 and human testis lysates.
常规说明	<p>This product is a recombinant monoclonal antibody, which offers several advantages including:</p> <ul style="list-style-type: none">- High batch-to-batch consistency and reproducibility- Improved sensitivity and specificity- Long-term security of supply- Animal-free production <p>For more information see here.</p> <p>Our RabMAb[®] technology is a patented hybridoma-based technology for making rabbit monoclonal antibodies. For details on our patents, please refer to RabMAb[®] patents.</p>

性能

形式	Liquid
存放说明	Shipped at 4°C. Store at +4°C short term (1-2 weeks). Upon delivery aliquot. Store at -20°C long term. Avoid freeze / thaw cycle.
存储溶液	pH: 7.2 Preservative: 0.01% Sodium azide Constituents: 59% PBS, 40% Glycerol (glycerin, glycerine), 0.05% BSA
纯度	Protein A purified
克隆	单克隆
克隆编号	EPR19379
同种型	IgG

应用

The Abpromise guarantee

Abpromise™ 承诺保证使用 ab199970 于以下的经测试应用

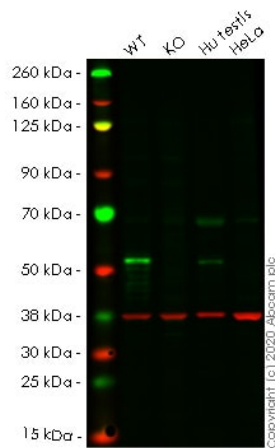
“应用说明”部分下显示的仅为推荐的起始稀释度；实际最佳的稀释度/浓度应由使用者检定。

应用	Ab评论	说明
WB	★★★★★ (1)	1/1000. Detects a band of approximately 48, 50 kDa (predicted molecular weight: 45, 49 kDa).
IP		1/100.

靶标

功能	Essential role in G1 cell cycle arrest. Phosphorylates and activates members of the AMPK-related subfamily of protein kinases. Tumor suppressor.
组织特异性	Ubiquitously expressed. Strongest expression in testis and fetal liver.
疾病相关	<p>Defects in STK11 are a cause of Peutz-Jeghers syndrome (PJS) [MIM:175200]. PJS is a rare hereditary disease in which there is predisposition to benign and malignant tumors of many organ systems. PJS is an autosomal dominant disorder characterized by melanocytic macules of the lips, multiple gastrointestinal hamartomatous polyps and an increased risk for various neoplasms, including gastrointestinal cancer.</p> <p>Defects in STK11 have been associated with testicular tumors (TEST) [MIM:273300]. A common solid malignancy in males. Germ cell tumors of the testis constitute 95% of all testicular neoplasms.</p>
序列相似性	Belongs to the protein kinase superfamily. CAMK Ser/Thr protein kinase family. LKB1 subfamily. Contains 1 protein kinase domain.
翻译后修饰	Phosphorylated by a cAMP-dependent protein kinase.
细胞定位	Nucleus. Cytoplasm. Relocates to the cytoplasm when bound to CAB39 and STRAD or CAB39 and ALS2CR2.

图片



Western blot - Anti-LKB1 antibody [EPR19379]
(ab199970)

All lanes : Anti-LKB1 antibody [EPR19379] (ab199970) at 1/1000 dilution

Lane 1 : Wild-type HEK-293T cell lysate

Lane 2 : STK11 knockout HEK-293T cell lysate

Lane 3 : Hu testis cell lysate

Lane 4 : HeLa cell lysate

Lysates/proteins at 20 µg per lane.

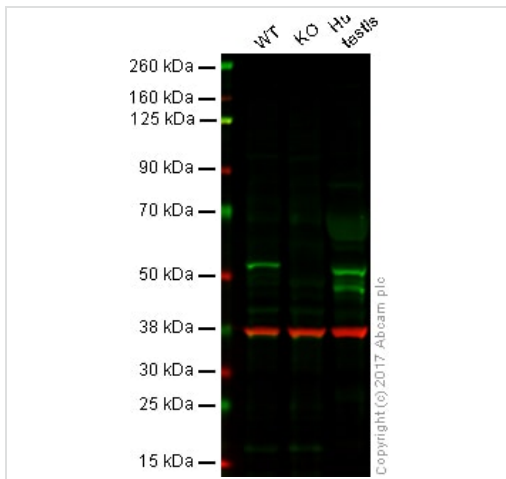
Performed under reducing conditions.

Predicted band size: 45, 49 kDa

Observed band size: 55 kDa

Lanes 1-4: Merged signal (red and green). Green - ab199970 observed at 55 kDa. Red - Anti-GAPDH antibody [6C5] - Loading Control ([ab8245](#)) observed at 37 kDa.

ab199970 was shown to react with LKB1 in wild-type HEK-293T cells in western blot. Loss of signal was observed when knockout cell line [ab266647](#) (knockout cell lysate [ab257712](#)) was used. Wild-type HEK-293T and STK11 knockout HEK-293T cell lysates were subjected to SDS-PAGE. Membrane was blocked for 1 hour at room temperature in 0.1% TBST with 3% non-fat dried milk. ab199970 and Anti-GAPDH antibody [6C5] - Loading Control ([ab8245](#)) overnight at 4°C at a 1 in 1000 dilution and a 1 in 20000 dilution respectively. Blots were developed with Goat anti-Rabbit IgG H&L (IRDye®800CW) preadsorbed ([ab216773](#)) and Goat anti-Mouse IgG H&L (IRDye®680RD) preadsorbed ([ab216776](#)) secondary antibodies at 1 in 20000 dilution for 1 hour at room temperature before imaging.



Western blot - Anti-LKB1 antibody [EPR19379] (ab199970)

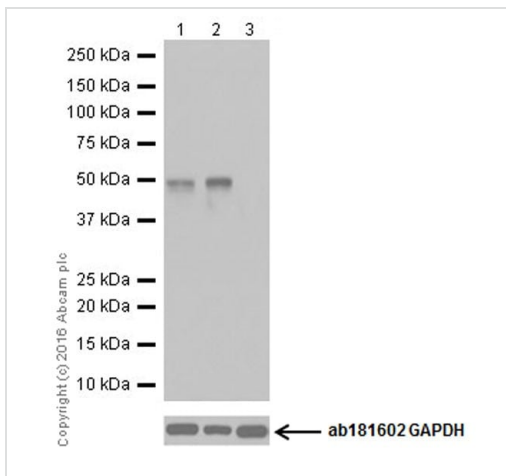
Lane 1: Wild-type HAP1 whole cell lysate (20 µg)

Lane 2: STK11 knockout HAP1 whole cell lysate (20 µg)

Lane 3: Hu Testis whole cell lysate (20 µg)

Lanes 1 - 3: Merged signal (red and green). Green - ab199970 observed at 50 kDa. Red - loading control, **ab8245**, observed at 37 kDa.

ab199970 was shown to specifically react with STK11 in wild-type HAP1 cells. No band was observed when STK11 knockout samples were examined. Wild-type and STK11 knockout samples were subjected to SDS-PAGE. Ab199970 and **ab8245** (Mouse anti GAPDH loading control) were incubated overnight at 4°C at 1/1000 dilution and 1/10,000 dilution respectively. Blots were developed with Goat anti-Rabbit IgG H&L (IRDye® 800CW) preabsorbed **ab216773** and Goat anti-Mouse IgG H&L (IRDye® 680RD) preabsorbed **ab216776** secondary antibodies at 1/10,000 dilution for 1 hour at room temperature before imaging.



Western blot - Anti-LKB1 antibody [EPR19379] (ab199970)

All lanes : Anti-LKB1 antibody [EPR19379] (ab199970) at 1/1000 dilution

Lane 1 : Jurkat (Human T cell leukemia cell line from peripheral blood) whole cell lysate

Lane 2 : K562 (Human chronic myelogenous leukemia cell line from bone marrow) whole cell lysate

Lane 3 : HeLa (Human epithelial cell line from cervix adenocarcinoma) whole cell lysate

Lysates/proteins at 20 µg per lane.

Secondary

All lanes : Goat Anti-Rabbit IgG H&L (HRP) (**ab97051**) at 1/100000 dilution

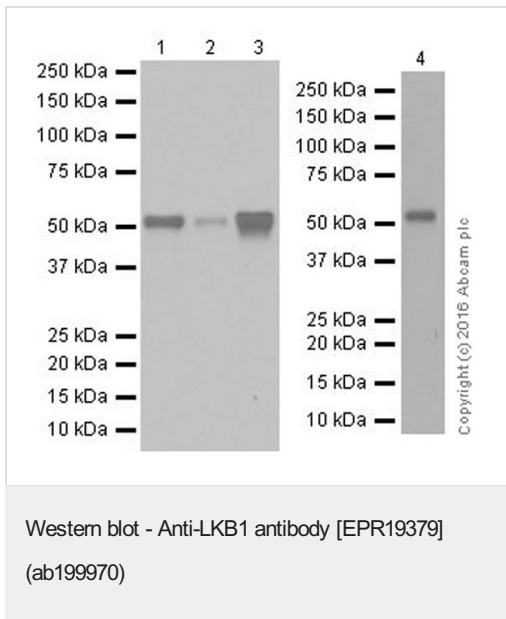
Predicted band size: 45, 49 kDa

Observed band size: 50 kDa

Exposure time: 15 seconds

Blocking/Dilution buffer: 5% NFDm/TBST.

Negative control: HeLa (PMID 11297520; PMID24086281; PMID 19340305).



All lanes : Anti-LKB1 antibody [EPR19379] (ab199970) at 1/1000 dilution

Lane 1 : Human brain lysate

Lane 2 : Human fetal heart lysate

Lane 3 : Human fetal kidney lysate

Lane 4 : Human fetal testis lysate

Lysates/proteins at 10 µg per lane.

Secondary

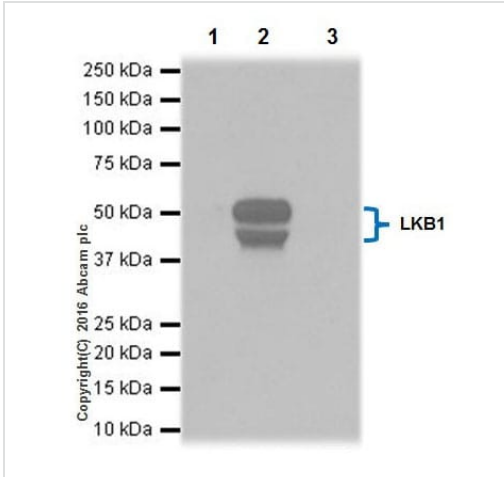
All lanes : Goat Anti-Rabbit IgG Peroxidase Conjugate, specific to the non-reduced form of IgG at 1/10000 dilution

Predicted band size: 45, 49 kDa

Observed band size: 50 kDa

Exposure time: 3 minutes

Blocking/Dilution buffer: 5% NFDm/TBST.



Immunoprecipitation - Anti-LKB1 antibody
[EPR19379] (ab199970)

LKB1 was immunoprecipitated from 1 mg of K562 (Human chronic myelogenous leukemia cell line from bone marrow) whole cell lysate with ab199970 at 1/100 dilution. Western blot was performed from the immunoprecipitate using ab199970 at 1/1000 dilution. VeriBlot for IP Detection Reagent (HRP) ([ab131366](#)), was used for detection at 1/10000 dilution.

Lane 1: K562 whole cell lysate, 10 µg (Input).

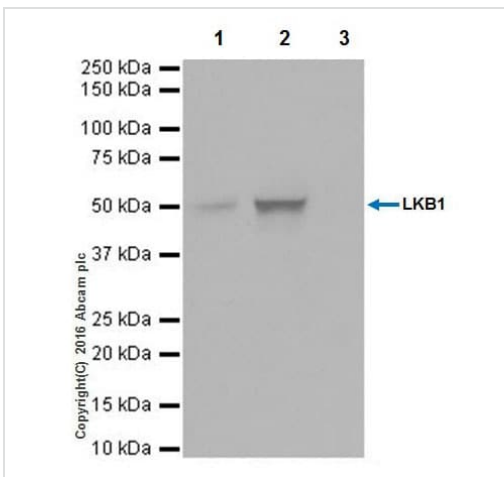
Lane 2: ab199970 IP in K562 whole cell lysate.

Lane 3: Rabbit IgG, monoclonal [EPR25A]-Isotype Control ([ab172730](#)) instead of ab199970 in K562 whole cell lysate.

Blocking and dilution buffer and concentration: 5% NFDm/TBST.

Exposure time: 3 minutes.

LKB1 isoforms: PMID 18854309.



Immunoprecipitation - Anti-LKB1 antibody
[EPR19379] (ab199970)

LKB1 was immunoprecipitated from 1 mg of Human testis lysate with ab199970 at 1/100 dilution. Western blot was performed from the immunoprecipitate using ab199970 at 1/500 dilution. VeriBlot for IP Detection Reagent (HRP) ([ab131366](#)), was used for detection at 1/1000 dilution.

Lane 1: Human testis lysate, 10 µg (Input).

Lane 2: ab199970 IP in Human testis lysate .

Lane 3: Rabbit IgG, monoclonal [EPR25A]-Isotype Control ([ab172730](#)) instead of ab199970 in Human testis lysate .

Blocking and dilution buffer and concentration: 5% NFDm/TBST.

Exposure time: 3 minutes.

LKB1 isoforms: PMID 18854309.

Why choose a recombinant antibody?

Research with confidence
Consistent and reproducible results

Long-term and scalable supply
Recombinant technology

Success from the first experiment
Confirmed specificity

Ethical standards compliant
Animal-free production

Anti-LKB1 antibody [EPR19379] (ab199970)

Please note: All products are "FOR RESEARCH USE ONLY. NOT FOR USE IN DIAGNOSTIC PROCEDURES"

Our Abpromise to you: Quality guaranteed and expert technical support

- Replacement or refund for products not performing as stated on the datasheet
- Valid for 12 months from date of delivery
- Response to your inquiry within 24 hours
- We provide support in Chinese, English, French, German, Japanese and Spanish
- Extensive multi-media technical resources to help you
- We investigate all quality concerns to ensure our products perform to the highest standards

If the product does not perform as described on this datasheet, we will offer a refund or replacement. For full details of the Abpromise, please visit <https://www.abcam.cn/abpromise> or contact our technical team.

Terms and conditions

- Guarantee only valid for products bought direct from Abcam or one of our authorized distributors