

### Anti-liver FABP antibody [L2B10] ab7366

★★★★★ [10 Abreviews](#) [15 References](#) [4 图像](#)

#### 概述

产品名称	Anti-liver FABP抗体[L2B10]
描述	小鼠单克隆抗体[L2B10] to liver FABP
宿主	Mouse
特异性	This monoclonal antibody binds to human liver FABP of both natural and recombinant origin. No reactivity to human intestinal or heart FABP.
经测试应用	<b>适用于:</b> WB, Functional Studies, Flow Cyt, IHC-P, IHC-Fr <b>不适用于:</b> ICC/IF
种属反应性	<b>与反应:</b> Mouse, Rat, Cow, Human, African green monkey
常规说明	<p>The Life Science industry has been in the grips of a reproducibility crisis for a number of years. Abcam is leading the way in addressing this with our range of recombinant monoclonal antibodies and knockout edited cell lines for gold-standard validation. Please check that this product meets your needs before purchasing.</p> <p>If you have any questions, special requirements or concerns, please send us an inquiry and/or contact our Support team ahead of purchase. Recommended alternatives for this product can be found below, along with publications, customer reviews and Q&amp;As</p>

#### 性能

形式	Liquid
存放说明	Shipped at 4°C. Upon delivery aliquot and store at -20°C. Avoid freeze / thaw cycles.
存储溶液	Preservative: 0.1% Sodium azide Constituent: 0.2% BSA
纯度	Protein G purified
克隆	单克隆
克隆编号	L2B10
同种型	IgG1

#### 应用

The Abpromise guarantee

**Abpromise™** 承诺保证使用ab7366于以下的经测试应用

“应用说明”部分 下显示的仅为推荐的起始稀释度;实际最佳的稀释度/浓度应由使用者检定。

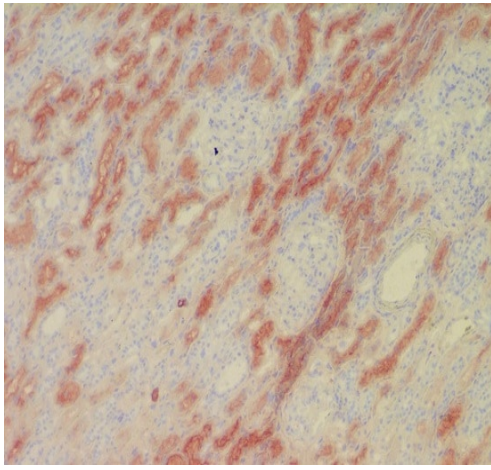
应用	Ab评论	说明
WB	★★★★★ (6)	Use at an assay dependent concentration. Predicted molecular weight: 14 kDa. PubMed: 18779054
Functional Studies		Use at an assay dependent concentration. Liver FABP is a sensitive marker for cell damage of liver cells in vivo and useful for example for in vitro toxicology tests. Cytotoxicity protocol: * Culture 100 ml of 1.105 HUH-7 cells per ml in 96-wells plate. * T=0: Add 100 ml of 2x test chemicals to 96-wells plate. * Incubate 37 degree C, 5% CO2. * T=24: measure L-FABP in supernatant.
Flow Cyt		Use 1µg for 10 <sup>6</sup> cells. <b>ab170190</b> - Mouse monoclonal IgG1, is suitable for use as an isotype control with this antibody.
IHC-P		Use at an assay dependent concentration.
IHC-Fr		Use at an assay dependent concentration.

应用说明 Is unsuitable for ICC/IF.

## 靶标

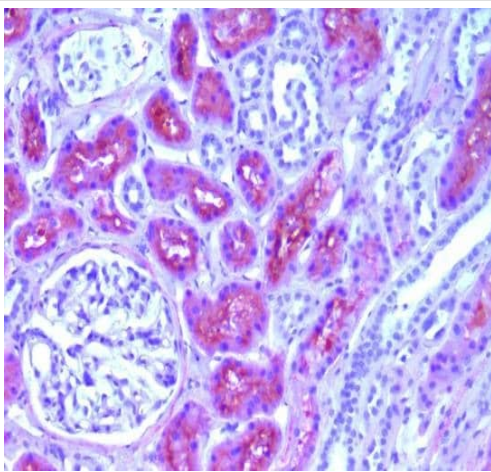
功能	Binds free fatty acids and their coenzyme A derivatives, bilirubin, and some other small molecules in the cytoplasm. May be involved in intracellular lipid transport.
序列相似性	Belongs to the calycin superfamily. Fatty-acid binding protein (FABP) family.
结构域	Forms a beta-barrel structure that accommodates hydrophobic ligands in its interior.
细胞定位	Cytoplasm.

## 图片



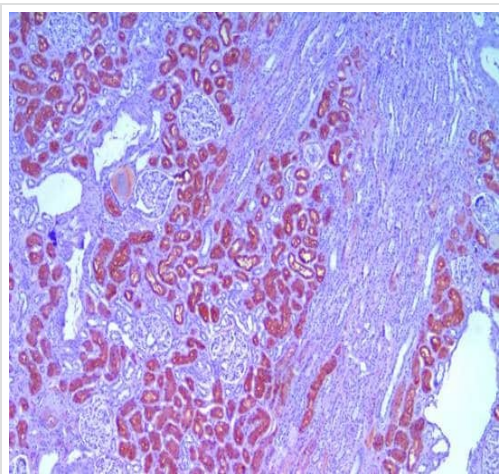
Immunohistochemistry (Frozen sections) - Anti-liver FABP antibody [L2B10] (ab7366)

Immunohistochemical analysis of human L-FABP in frozen human kidney tissue with ab7366 at 1.9 µg/ml.



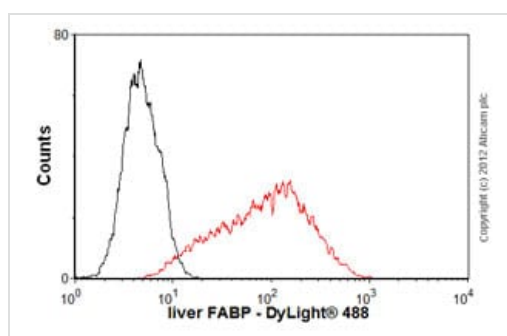
Immunohistochemistry (Formalin/PFA-fixed paraffin-embedded sections) - Anti-liver FABP antibody [L2B10] (ab7366)

Immunohistochemistry (Paraffin-embedded sections) analysis of human kidney tissue labelling liver FABP with ab7366 at 1/1000. Antigen retrieval was performed using glycine buffer. Magnification: 200X.



Immunohistochemistry (Formalin/PFA-fixed paraffin-embedded sections) - Anti-liver FABP antibody [L2B10] (ab7366)

Immunohistochemistry (Paraffin-embedded sections) analysis of human kidney tissue labelling liver FABP with ab7366 at 1/1000. Antigen retrieval was performed using glycine buffer. Magnification: 50X.



Flow Cytometry - Anti-liver FABP antibody [L2B10] (ab7366)

Overlay histogram showing HepG2 cells stained with **ab110336** (red line). The cells were fixed with 4% paraformaldehyde (10 min) and then permeabilized with 0.1% PBS-Tween for 20 min. The cells were then incubated in 1x PBS / 10% normal goat serum / 0.3M glycine to block non-specific protein-protein interactions. The cells were then incubated with the antibody (**ab110336**, 1µg/1x10<sup>6</sup> cells) for 30 min at 22°C. The secondary antibody used was DyLight® 488 goat anti-mouse IgG (H+L) (**ab96879**) at 1/500 dilution for 30 min at 22°C. Isotype control antibody (black line) was mouse IgG1 [ICIGG1] (**ab91353**, 2µg/1x10<sup>6</sup> cells) used under the same conditions. Acquisition of >5,000 events was performed.

**Please note:** All products are "FOR RESEARCH USE ONLY. NOT FOR USE IN DIAGNOSTIC PROCEDURES"

### Our Abpromise to you: Quality guaranteed and expert technical support

- Replacement or refund for products not performing as stated on the datasheet
- Valid for 12 months from date of delivery
- Response to your inquiry within 24 hours
- We provide support in Chinese, English, French, German, Japanese and Spanish
- Extensive multi-media technical resources to help you
- We investigate all quality concerns to ensure our products perform to the highest standards

If the product does not perform as described on this datasheet, we will offer a refund or replacement. For full details of the Abpromise, please visit <https://www.abcam.cn/abpromise> or contact our technical team.

## Terms and conditions

---

- Guarantee only valid for products bought direct from Abcam or one of our authorized distributors