

Anti-liver Arginase antibody ab60176

★★★★★ [8 Abreviews](#) [34 References](#) [1 图像](#)

概述

产品名称	Anti-liver Arginase抗体
描述	山羊多克隆抗体 to liver Arginase
宿主	Goat
经测试应用	适用于: ICC, IHC-Fr, WB
种属反应性	与反应: Mouse, Rat
免疫原	Synthetic peptide corresponding to Rat Liver Arginase aa 311-323 (C terminal). Sequence: C-NHKPETDYLKPPK

 [Run BLAST with](#)

 [Run BLAST with](#)

常规说明

The Life Science industry has been in the grips of a reproducibility crisis for a number of years. Abcam is leading the way in addressing this with our range of recombinant monoclonal antibodies and knockout edited cell lines for gold-standard validation. Please check that this product meets your needs before purchasing.

If you have any questions, special requirements or concerns, please send us an inquiry and/or contact our Support team ahead of purchase. Recommended alternatives for this product can be found below, along with publications, customer reviews and Q&As

性能

形式	Liquid
存放说明	Shipped at 4°C. Store at +4°C short term (1-2 weeks). Upon delivery aliquot. Store at -20°C. Avoid freeze / thaw cycle.
存储溶液	pH: 7.30 Preservative: 0.02% Sodium azide Constituents: 99% Tris buffered saline, 0.5% BSA
纯度	Immunogen affinity purified
纯化说明	Purified from goat serum by ammonium sulphate precipitation followed by antigen affinity chromatography using the immunizing peptide
克隆	多克隆
同种型	IgG

应用

The Abpromise guarantee **Abpromise™**承诺保证使用ab60176于以下的经测试应用

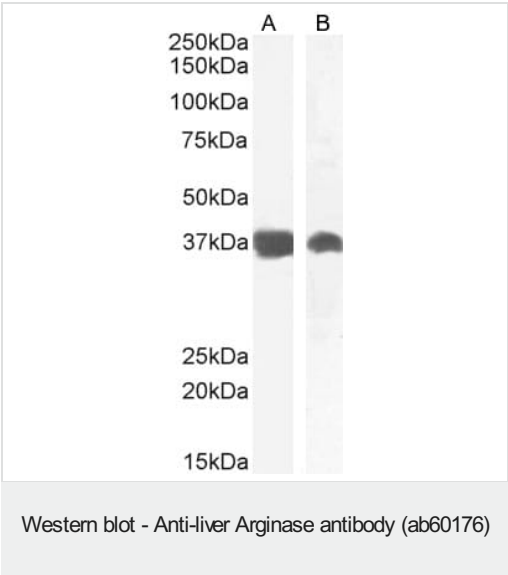
“应用说明”部分 下显示的仅为推荐的起始稀释度;实际最佳的稀释度/浓度应由使用者检定。

应用	Ab评论	说明
ICC	★★★★★ (2)	Use at an assay dependent concentration.
IHC-Fr	★★★★★ (2)	Use at an assay dependent concentration.
WB	★★★★★ (1)	Use a concentration of 0.01 - 0.03 µg/ml. Detects a band of approximately 37 kDa (predicted molecular weight: 35 kDa). A 1 hour primary incubation at room temperature is recommended for this product.

靶标

通路	Nitrogen metabolism; urea cycle; L-ornithine and urea from L-arginine: step 1/1.
疾病相关	Defects in ARG1 are the cause of argininemia (ARGIN) [MIM:207800]; also known as hyperargininemia. Argininemia is a rare autosomal recessive disorder of the urea cycle. Arginine is elevated in the blood and cerebrospinal fluid, and periodic hyperammonemia occurs. Clinical manifestations include developmental delay, seizures, mental retardation, hypotonia, ataxia, progressive spastic quadriplegia.
序列相似性	Belongs to the arginase family.
细胞定位	Cytoplasm.

图片



Lane 1 : Anti-liver Arginase antibody (ab60176) at 0.01 µg/ml
Lane 2 : Anti-liver Arginase antibody (ab60176) at 0.03 µg/ml

Lane 1 : Mouse liver lysate
Lane 2 : Rat liver lysate

Lysates/proteins at 35 µg per lane.

Predicted band size: 35 kDa

Please note: All products are "FOR RESEARCH USE ONLY. NOT FOR USE IN DIAGNOSTIC PROCEDURES"

Our Abpromise to you: Quality guaranteed and expert technical support

- Replacement or refund for products not performing as stated on the datasheet
- Valid for 12 months from date of delivery
- Response to your inquiry within 24 hours

- We provide support in Chinese, English, French, German, Japanese and Spanish
- Extensive multi-media technical resources to help you
- We investigate all quality concerns to ensure our products perform to the highest standards

If the product does not perform as described on this datasheet, we will offer a refund or replacement. For full details of the Abpromise, please visit <https://www.abcam.cn/abpromise> or contact our technical team.

Terms and conditions

- Guarantee only valid for products bought direct from Abcam or one of our authorized distributors