

Anti-LIMPII antibody [EPR12080] ab176317

敲除验证
重组
RabMAb

[7 References](#)
[7 图像](#)

概述

产品名称	Anti-LIMPII抗体[EPR12080]
描述	兔单克隆抗体[EPR12080] to LIMPII
宿主	Rabbit
经测试应用	适用于: Flow Cyt (Intra), WB, IP, IHC-P 不适用于: ICC/IF
种属反应性	与反应: Mouse, Rat, Human
免疫原	Synthetic peptide within Human LIMPII aa 50-150. The exact sequence is proprietary. Database link: Q14108
阳性对照	WB: HeLa and Y79 cell lysate. Rat eyeball and muscle lysate. Mouse liver lysate. IP: Y79 cell lysate. Flow Cyt (intra): Permeabilized HeLa cells. IHC-P: Human kidney and liver tissue.
常规说明	<p>This product is a recombinant monoclonal antibody, which offers several advantages including:</p> <ul style="list-style-type: none"> - High batch-to-batch consistency and reproducibility - Improved sensitivity and specificity - Long-term security of supply - Animal-free production <p>For more information see here.</p> <p>Our RabMAb[®] technology is a patented hybridoma-based technology for making rabbit monoclonal antibodies. For details on our patents, please refer to RabMAb[®] patents.</p>

性能

形式	Liquid
存放说明	Shipped at 4°C. Store at +4°C short term (1-2 weeks). Upon delivery aliquot. Store at -20°C long term. Avoid freeze / thaw cycle.
存储溶液	pH: 7.20 Preservative: 0.01% Sodium azide Constituents: 59% PBS, 40% Glycerol (glycerin, glycerine), 0.5% BSA
纯度	Protein A purified
克隆	单克隆
克隆编号	EPR12080

同种型

IgG

应用

The Abpromise guarantee

Abpromise™承诺保证使用ab176317于以下的经测试应用

“应用说明”部分 下显示的仅为推荐的起始稀释度;实际最佳的稀释度/浓度应由使用者检定。

应用	Ab评论	说明
Flow Cyt (Intra)		1/10 - 1/100. ab172730 - Rabbit monoclonal IgG, is suitable for use as an isotype control with this antibody.
WB		1/1000 - 1/5000. Predicted molecular weight: 54 kDa.
IP		1/10 - 1/100.
IHC-P		1/50 - 1/100. Perform heat mediated antigen retrieval with citrate buffer pH 6 before commencing with IHC staining protocol.

应用说明

Is unsuitable for ICC/IF.

靶标

功能

Acts as a lysosomal receptor for glucosylceramidase (GBA) targeting.
(Microbial infection) Acts as a receptor for enterovirus 71.

疾病相关

Epilepsy, progressive myoclonic 4, with or without renal failure
Genetic variants in SCARB2 can act as modifier of the phenotypic expression and severity of Gaucher disease.

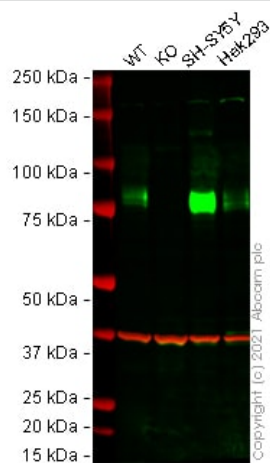
序列相似性

Belongs to the CD36 family.

细胞定位

Lysosome membrane.

图片



Western blot - Anti-LIMP2 antibody [EPR12080]
(ab176317)

All lanes : Anti-LIMP2 antibody [EPR12080] (ab176317) at 1/1000 dilution

Lane 1 : Wild-type MCF7 cell lysate

Lane 2 : SCARB2 knockout MCF7 cell lysate

Lane 3 : SH-SY5Y cell lysate

Lane 4 : HEK-293 cell lysate

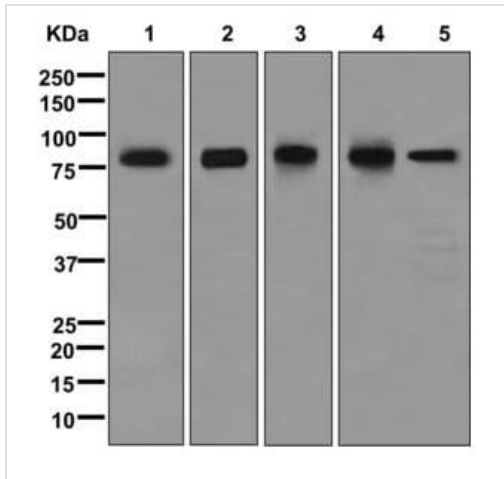
Lysates/proteins at 20 µg per lane.

Performed under reducing conditions.

Predicted band size: 54 kDa

Observed band size: 80 kDa

False colour image of Western blot: Anti-LIMP2 antibody [EPR12080] staining at 1/1000 dilution, shown in green; Mouse anti-GAPDH antibody [6C5] ([ab8245](#)) loading control staining at 1/20000 dilution, shown in red. In Western blot, ab176317 was shown to bind specifically to LIMP2. A band was observed at 80 kDa in wild-type MCF7 cell lysates with no signal observed at this size in SCARB2 knockout cell line [ab274952](#) (knockout cell lysate [ab275010](#)). To generate this image, wild-type and SCARB2 knockout MCF7 cell lysates were analysed. First, samples were run on an SDS-PAGE gel then transferred onto a nitrocellulose membrane. Membranes were blocked in 3 % milk in TBS-0.1 % Tween® 20 (TBS-T) before incubation with primary antibodies overnight at 4 °C. Blots were washed four times in TBS-T, incubated with secondary antibodies for 1 h at room temperature, washed again four times then imaged. Secondary antibodies used were Goat anti-Rabbit IgG H&L (IRDye® 800CW) preabsorbed ([ab216773](#)) and Goat anti-Mouse IgG H&L (IRDye® 680RD) preabsorbed ([ab216776](#)) at 1/20000 dilution.



Western blot - Anti-LIMP2 antibody [EPR12080] (ab176317)

All lanes : Anti-LIMP2 antibody [EPR12080] (ab176317) at 1/1000 dilution

Lane 1 : HeLa (Human epithelial cell line from cervix adenocarcinoma) lysate

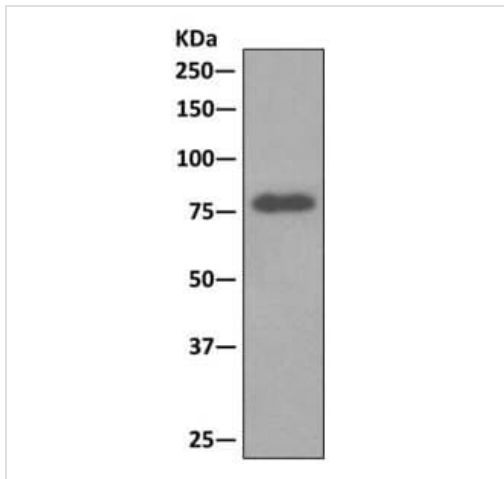
Lane 2 : Y79 (Human retinoblastoma cell line) lysate

Lane 3 : Rat eyeball lysate

Lane 4 : Rat muscle lysate

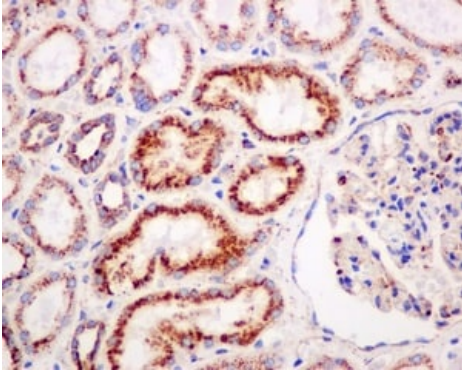
Lane 5 : Mouse liver lysate

Predicted band size: 84 kDa



Immunoprecipitation - Anti-LIMP2 antibody [EPR12080] (ab176317)

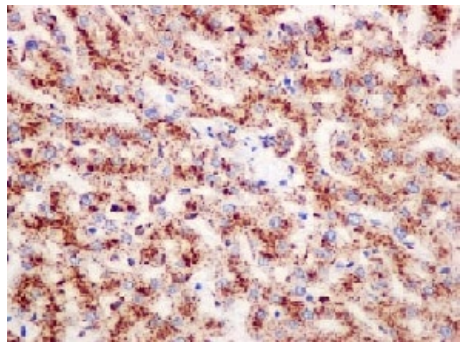
Western blot analysis on immunoprecipitation pellet from Y79 (Human retinoblastoma cell line) cell lysate labeling LIMP2 using ab176317 at a 1/10 dilution.



Immunohistochemistry (Formalin/PFA-fixed paraffin-embedded sections) - Anti-LIMP2 antibody
[EPR12080] (ab176317)

Immunohistochemical analysis of paraffin-embedded human kidney tissue labelling LIMP2 using ab176317 at a 1/50 dilution.

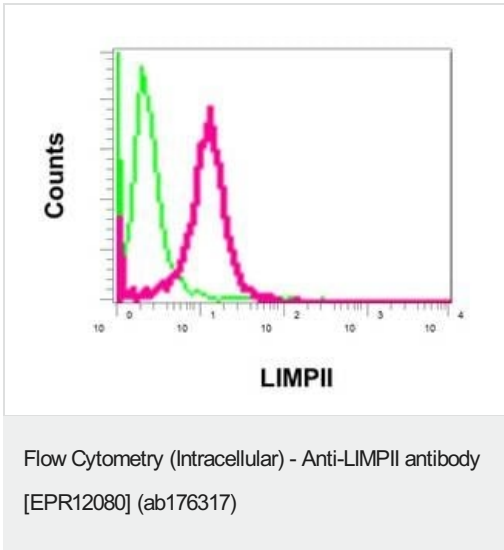
Perform heat mediated antigen retrieval with citrate buffer pH 6 before commencing with IHC staining protocol.



Immunohistochemistry (Formalin/PFA-fixed paraffin-embedded sections) - Anti-LIMP2 antibody
[EPR12080] (ab176317)

Immunohistochemical analysis of paraffin-embedded human liver tissue labelling LIMP2 using ab176317 at a 1/50 dilution.

Perform heat mediated antigen retrieval with citrate buffer pH 6 before commencing with IHC staining protocol.



Intracellular flow cytometric analysis of permeabilized HeLa cells labeling LIMPII using ab176317 at a 1/10 dilution (red) or a rabbit IgG control (green).

Why choose a recombinant antibody?

 <p>Research with confidence Consistent and reproducible results</p>	 <p>Long-term and scalable supply Recombinant technology</p>
 <p>Success from the first experiment Confirmed specificity</p>	 <p>Ethical standards compliant Animal-free production</p>

Anti-LIMPII antibody [EPR12080] (ab176317)

Please note: All products are "FOR RESEARCH USE ONLY. NOT FOR USE IN DIAGNOSTIC PROCEDURES"

Our Abpromise to you: Quality guaranteed and expert technical support

- Replacement or refund for products not performing as stated on the datasheet
- Valid for 12 months from date of delivery
- Response to your inquiry within 24 hours
- We provide support in Chinese, English, French, German, Japanese and Spanish
- Extensive multi-media technical resources to help you
- We investigate all quality concerns to ensure our products perform to the highest standards

If the product does not perform as described on this datasheet, we will offer a refund or replacement. For full details of the Abpromise, please visit <https://www.abcam.cn/abpromise> or contact our technical team.

Terms and conditions

- Guarantee only valid for products bought direct from Abcam or one of our authorized distributors