

Anti-LIMCH1 antibody ab96178

★★★★★ [2 Abreviews](#) [4 References](#) [3 图像](#)

概述

产品名称	Anti-LIMCH1抗体
描述	兔多克隆抗体to LIMCH1
宿主	Rabbit
经测试应用	适用于: ICC/IF, WB, IHC-P
种属反应性	与反应: Mouse, Human 预测可用于: Cow 
免疫原	Recombinant fragment, corresponding to a sequence within amino acids 734-1057 of Human LIMCH1.
常规说明	<p>The Life Science industry has been in the grips of a reproducibility crisis for a number of years. Abcam is leading the way in addressing this with our range of recombinant monoclonal antibodies and knockout edited cell lines for gold-standard validation. Please check that this product meets your needs before purchasing.</p> <p>If you have any questions, special requirements or concerns, please send us an inquiry and/or contact our Support team ahead of purchase. Recommended alternatives for this product can be found below, along with publications, customer reviews and Q&As</p>

性能

形式	Liquid
存放说明	Shipped at 4°C. Upon delivery aliquot and store at -20°C or -80°C. Avoid repeated freeze / thaw cycles.
存储溶液	<p>pH: 7.00</p> <p>Preservative: 0.025% Proclin 300</p> <p>Constituents: 79% PBS, 20% Glycerol (glycerin, glycerine)</p>
纯度	Immunogen affinity purified
克隆	多克隆
同种型	IgG

应用

The Abpromise guarantee

Abpromise™ 承诺保证使用ab96178于以下的经测试应用

“应用说明”部分 下显示的仅为推荐的起始稀释度;实际最佳的稀释度/浓度应由使用者检定。

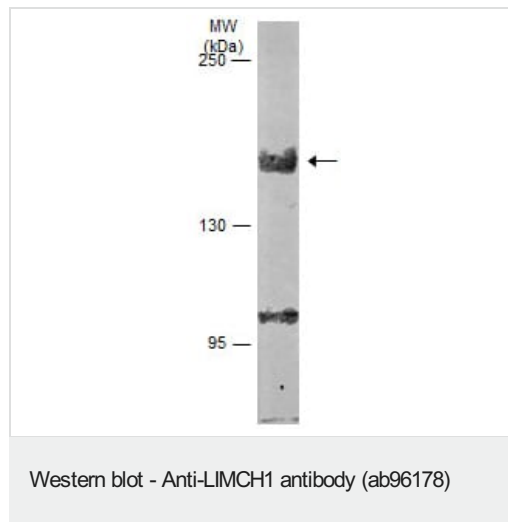
应用	Ab评论	说明
ICC/IF		Use at an assay dependent concentration.
WB	★★★★★ (1)	1/500 - 1/3000. Predicted molecular weight: 119 kDa.
IHC-P	★★★★★ (1)	1/100 - 1/1000. Perform heat mediated antigen retrieval before commencing with IHC staining protocol. Suggest antigen retrieval using heat mediated 10mM Citrate buffer (pH6.0) or Tris-EDTA buffer (pH8.0).

靶标

序列相似性

Belongs to the LIMCH1 family.
Contains 1 CH (calponin-homology) domain.
Contains 1 LIM zinc-binding domain.

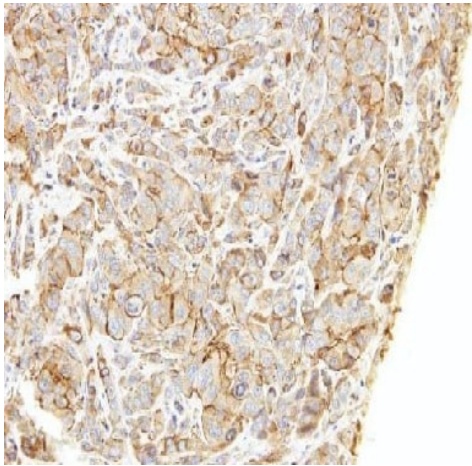
图片



Anti-LIMCH1 antibody (ab96178) at 1/2000 dilution + Mouse brain whole cell lysate at 50 µg

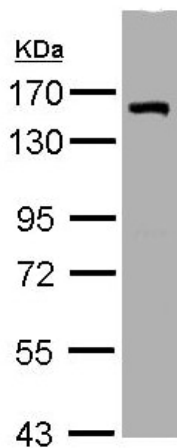
Predicted band size: 119 kDa

Run on 5% SDS PAGE gel



Immunohistochemical analysis of paraffin-embedded A549 xenograft, using ab96178 antibody at 1:500 dilution.

Immunohistochemistry (Formalin/PFA-fixed paraffin-embedded sections) - Anti-LIMCH1 antibody (ab96178)



Anti-LIMCH1 antibody (ab96178) at 1/1000 dilution + H1299 whole cell lysate at 30 µg

Predicted band size: 119 kDa

Western blot - Anti-LIMCH1 antibody (ab96178)

Please note: All products are "FOR RESEARCH USE ONLY. NOT FOR USE IN DIAGNOSTIC PROCEDURES"

Our Abpromise to you: Quality guaranteed and expert technical support

- Replacement or refund for products not performing as stated on the datasheet
- Valid for 12 months from date of delivery
- Response to your inquiry within 24 hours
- We provide support in Chinese, English, French, German, Japanese and Spanish
- Extensive multi-media technical resources to help you
- We investigate all quality concerns to ensure our products perform to the highest standards

If the product does not perform as described on this datasheet, we will offer a refund or replacement. For full details of the Abpromise, please visit <https://www.abcam.cn/abpromise> or contact our technical team.

Terms and conditions

- Guarantee only valid for products bought direct from Abcam or one of our authorized distributors