

### Anti-LeuRS antibody ab31534

★★★★★ [1 Abreviews](#) [8 References](#) [3 图像](#)

#### 概述

产品名称	Anti-LeuRS抗体
描述	兔多克隆抗体to LeuRS
宿主	Rabbit
特异性	This antibody reacts specifically with LeuRS.
经测试应用	<b>适用于:</b> WB, IHC-P
种属反应性	<b>与反应:</b> Human
免疫原	Recombinant full length protein. This information is proprietary to Abcam and/or its suppliers.
常规说明	<p>The Life Science industry has been in the grips of a reproducibility crisis for a number of years. Abcam is leading the way in addressing this with our range of recombinant monoclonal antibodies and knockout edited cell lines for gold-standard validation. Please check that this product meets your needs before purchasing.</p> <p>If you have any questions, special requirements or concerns, please send us an inquiry and/or contact our Support team ahead of purchase. Recommended alternatives for this product can be found below, along with publications, customer reviews and Q&amp;As</p>

#### 性能

形式	Liquid
存放说明	Shipped at 4°C. Store at +4°C short term (1-2 weeks). Upon delivery aliquot. Store at -20°C long term.
存储溶液	Preservative: 0.05% Sodium azide
纯度	Whole antiserum
克隆	多克隆
同种型	IgG

#### 应用

**The Abpromise guarantee**      **Abpromise™**承诺保证使用ab31534于以下的经测试应用

“应用说明”部分 下显示的仅为推荐的起始稀释度;实际最佳的稀释度/浓度应由使用者检定。

应用	Ab评论	说明
WB	★★★★★ (1)	1/1000. Predicted molecular weight: 135 kDa.
IHC-P		1/200.

## 靶标

### 功能

Catalyzes the specific attachment of an amino acid to its cognate tRNA in a two step reaction: the amino acid (AA) is first activated by ATP to form AA-AMP and then transferred to the acceptor end of the tRNA. Exhibits a post-transfer editing activity to hydrolyze mischarged tRNAs.

### 疾病相关

Infantile liver failure syndrome 1

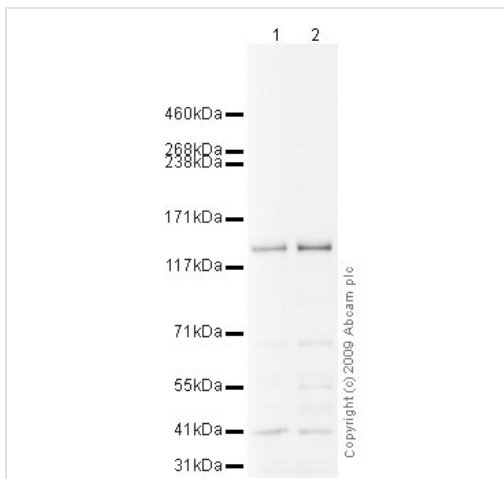
### 序列相似性

Belongs to the class-I aminoacyl-tRNA synthetase family.

### 细胞定位

Cytoplasm.

## 图片



Western blot - Anti-LeuRS antibody (ab31534)

**All lanes** : Anti-LeuRS antibody (ab31534) at 1/4000 dilution

**Lane 1** : Y79 (Human retinoblastoma cell line) Whole Cell Lysate

**Lane 2** : Raji (Human Burkitt's lymphoma cell line) Whole Cell Lysate

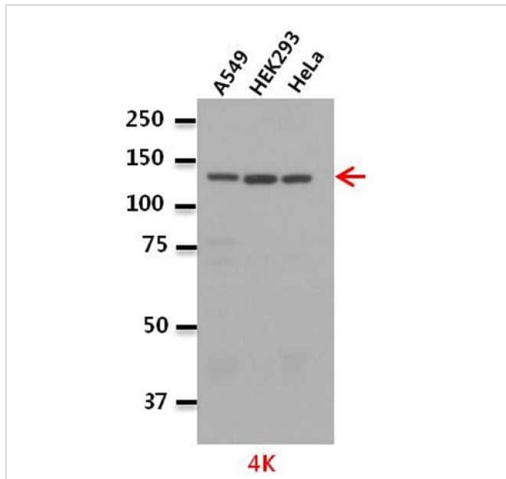
Lysates/proteins at 10 µg per lane.

### Secondary

**All lanes** : Goat polyclonal to Rabbit IgG - H&L - Pre-Adsorbed (HRP) at 1/3000 dilution

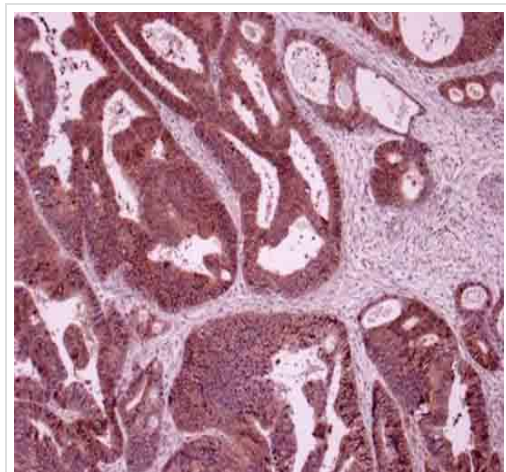
**Predicted band size:** 135 kDa

**Observed band size:** 135 kDa



Western blot - Anti-LeuRS antibody (ab31534)

ab31534 used in Western Blot at a 1/4,000 dilution.



Immunohistochemistry (Formalin/PFA-fixed paraffin-embedded sections) - Anti-LeuRS antibody (ab31534)

ab31534 at a 1/200 dilution staining LeuRS in human colon cancer tissue by Immunohistochemistry.

**Please note:** All products are "FOR RESEARCH USE ONLY. NOT FOR USE IN DIAGNOSTIC PROCEDURES"

**Our Abpromise to you: Quality guaranteed and expert technical support**

- Replacement or refund for products not performing as stated on the datasheet
- Valid for 12 months from date of delivery
- Response to your inquiry within 24 hours
  
- We provide support in Chinese, English, French, German, Japanese and Spanish
- Extensive multi-media technical resources to help you
- We investigate all quality concerns to ensure our products perform to the highest standards

If the product does not perform as described on this datasheet, we will offer a refund or replacement. For full details of the Abpromise, please visit <https://www.abcam.cn/abpromise> or contact our technical team.

### **Terms and conditions**

---

- Guarantee only valid for products bought direct from Abcam or one of our authorized distributors