

Anti-Leukotriene A4 hydrolase/LTA4H antibody [EPR5713]
ab133512

敲除验证 重组 RabMAb

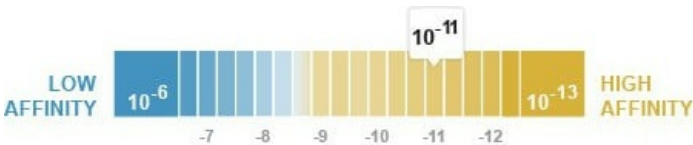
7 References 7 图像

概述

产品名称	Anti-Leukotriene A4 hydrolase/LTA4H抗体[EPR5713]
描述	兔单克隆抗体[EPR5713] to Leukotriene A4 hydrolase/LTA4H
宿主	Rabbit
经测试应用	适用于: Flow Cyt (Intra), WB, IHC-P 不适用于: IP
种属反应性	与反应: Mouse, Rat, Human
免疫原	Synthetic peptide within Human Leukotriene A4 hydrolase/LTA4H aa 550-650. The exact sequence is proprietary.
阳性对照	WB: HeLa, 293T, T47D and A549 cell lysates. IHC-P: Human kidney tissue. Flow Cyt (intra): Jurkat cells.
常规说明	<p>This product is a recombinant monoclonal antibody, which offers several advantages including:</p> <ul style="list-style-type: none">- High batch-to-batch consistency and reproducibility- Improved sensitivity and specificity- Long-term security of supply- Animal-free production <p>For more information see here.</p> <p>Our RabMAb[®] technology is a patented hybridoma-based technology for making rabbit monoclonal antibodies. For details on our patents, please refer to RabMAb[®] patents.</p>

性能

形式	Liquid
存放说明	Shipped at 4°C. Store at -20°C. Stable for 12 months at -20°C.
解离常数 (K _D)	K _D = 5.40 x 10 ⁻¹¹ M



[Learn more about K_D](#)

存储溶液	pH: 7.2 Preservative: 0.05% Sodium azide Constituents: 40% Glycerol (glycerin, glycerine), 9.85% Tris glycine, 50% Tissue culture supernatant
纯度	Tissue culture supernatant
克隆	单克隆
克隆编号	EPR5713
同种型	IgG

应用

The Abpromise guarantee **Abpromise™**承诺保证使用ab133512于以下的经测试应用

“应用说明”部分 下显示的仅为推荐的起始稀释度;实际最佳的稀释度/浓度应由使用者检定。

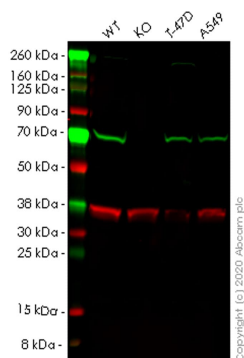
应用	Ab评论	说明
Flow Cyt (Intra)		1/100 - 1/1000. ab172730 - Rabbit monoclonal IgG, is suitable for use as an isotype control with this antibody.
WB		1/10000 - 1/50000. Predicted molecular weight: 69 kDa.
IHC-P		1/250 - 1/500. Perform heat mediated antigen retrieval with citrate buffer pH 6 before commencing with IHC staining protocol.

应用说明 Is unsuitable for IP.

靶标

功能	Hydrolyzes an epoxide moiety of leukotriene A4 (LTA-4) to form leukotriene B4 (LTB-4). The enzyme also has some peptidase activity.
通路	Lipid metabolism; leukotriene B4 biosynthesis.
序列相似性	Belongs to the peptidase M1 family.
细胞定位	Cytoplasm.

图片



Western blot - Anti-Leukotriene A4 hydrolase/LTA4H antibody [EPR5713] (ab133512)

All lanes : Anti-Leukotriene A4 hydrolase/LTA4H antibody [EPR5713] (ab133512) at 1/1000 dilution

Lane 1 : Wild-type HEK293T cell lysate

Lane 2 : LTA4H knockout HEK293T cell lysate

Lane 3 : T-47D cell lysate

Lane 4 : A549 cell lysate

Lysates/proteins at 20 µg per lane.

Secondary

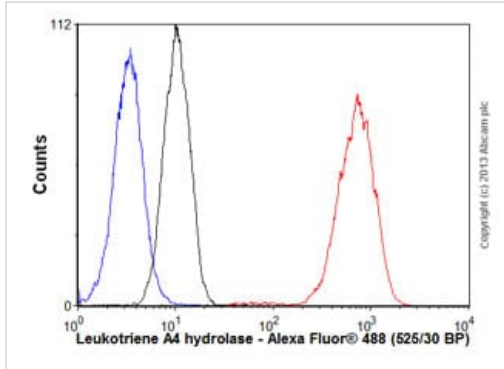
All lanes : Goat anti-Rabbit IgG H&L (IRDye® 800CW) preadsorbed ([ab216773](#)) at 1/10000 dilution

Predicted band size: 69 kDa

Observed band size: 69 kDa

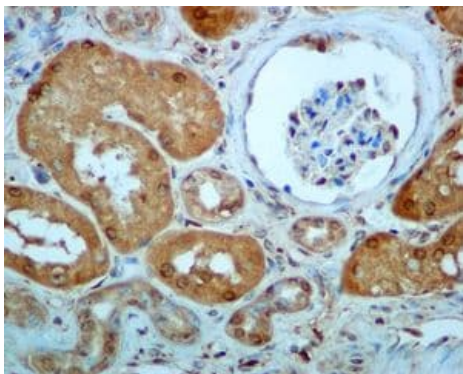
Lanes 1-4: Merged signal (red and green). Green - ab133512 observed at 69 kDa. Red - loading control [ab8245](#) observed at 36 kDa.

ab133512 Anti-Leukotriene A4 hydrolase/LTA4H antibody [EPR5713] was shown to specifically react with Leukotriene in wild-type HEK293T cells. Loss of signal was observed when knockout cell line [ab266467](#) (knockout cell lysate [ab258034](#)) was used. Wild-type and Leukotriene knockout samples were subjected to SDS-PAGE. ab133512 and Anti-GAPDH antibody [6C5] - Loading Control ([ab8245](#)) were incubated overnight at 4°C at 1 in 1000 dilution and 1 in 20000 dilution respectively. Blots were developed with Goat anti-Rabbit IgG H&L (IRDye® 800CW) preadsorbed ([ab216773](#)) and Goat anti-Mouse IgG H&L (IRDye® 680RD) preadsorbed ([ab216776](#)) secondary antibodies at 1 in 20000 dilution for 1 hour at room temperature before imaging.



Flow Cytometry (Intracellular) - Anti-Leukotriene A4 hydrolase/LTA4H antibody [EPR5713] (ab133512)

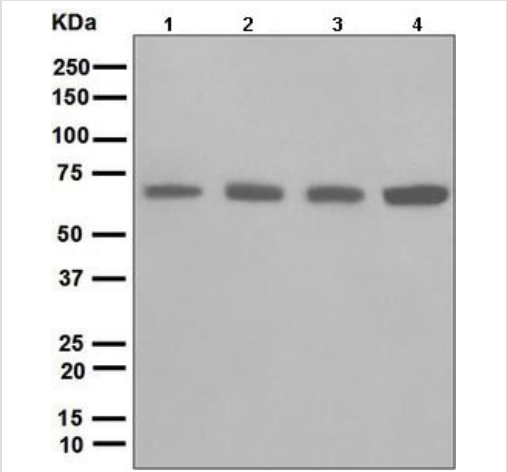
Overlay histogram showing Jurkat cells stained with ab133512 (red line). The cells were fixed with 80% methanol (5 min) and then permeabilized with 0.1% PBS-Tween for 20 min. The cells were then incubated in 1x PBS / 10% normal goat serum / 0.3M glycine to block non-specific protein-protein interactions followed by the antibody (ab133512, 1/1000 dilution) for 30 min at 22°C. The secondary antibody used was Alexa Fluor® 488 goat anti-rabbit IgG (H&L) (**ab150077**) at 1/2000 dilution for 30 min at 22°C. Isotype control antibody (black line) was rabbit IgG (monoclonal) (0.1µg/1x10⁶ cells) used under the same conditions. Unlabelled sample (blue line) was also used as a control. Acquisition of >5,000 events were collected using a 20mW Argon ion laser (488nm) and 525/30 bandpass filter. This antibody gave a positive signal in Jurkat cells fixed with 4% paraformaldehyde (10 min)/permeabilized with 0.1% PBS-Tween for 20 min used under the same conditions.



Immunohistochemistry (Formalin/PFA-fixed paraffin-embedded sections) - Anti-Leukotriene A4 hydrolase/LTA4H antibody [EPR5713] (ab133512)

Immunohistochemical analysis of paraffin-embedded Human kidney tissue labelling Leukotriene A4 hydrolase/LTA4H with ab133512 at 1/250 dilution.

Perform heat mediated antigen retrieval with citrate buffer pH 6 before commencing with IHC staining protocol.



Western blot - Anti-Leukotriene A4 hydrolase/LTA4H antibody [EPR5713] (ab133512)

All lanes : Anti-Leukotriene A4 hydrolase/LTA4H antibody [EPR5713] (ab133512) at 1/10000 dilution

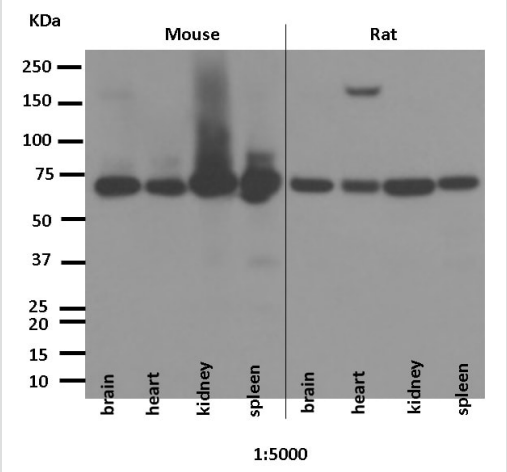
- Lane 1 :** HeLa cell lysate
- Lane 2 :** 293T cell lysate
- Lane 3 :** T47D cell lysate
- Lane 4 :** A549 cell lysate

Lysates/proteins at 10 µg per lane.

Secondary

All lanes : Goat-anti-rabbit HRP at 1/2000 dilution

Predicted band size: 69 kDa



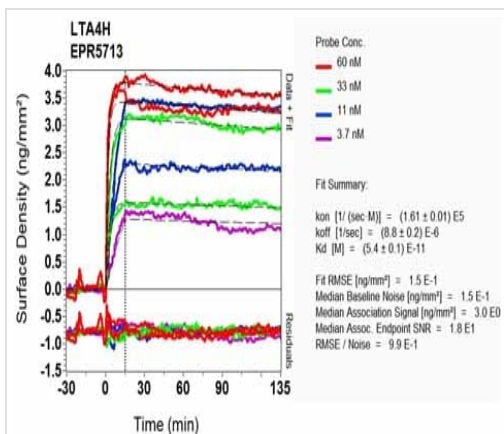
Western blot - Anti-Leukotriene A4 hydrolase/LTA4H antibody [EPR5713] (ab133512)

All lanes : Anti-Leukotriene A4 hydrolase/LTA4H antibody [EPR5713] (ab133512) at 1/5000 dilution

- Lane 1 :** Mouse brain tissue lysate
- Lane 2 :** Mouse heart tissue lysate
- Lane 3 :** Mouse kidney tissue lysate
- Lane 4 :** Mouse spleen tissue lysate
- Lane 5 :** Rat brain tissue lysate
- Lane 6 :** Rat heart tissue lysate
- Lane 7 :** Rat kidney tissue lysate
- Lane 8 :** Rat spleen tissue lysate

Predicted band size: 69 kDa
Observed band size: 70 kDa

Exposure time: 1 minute



OI-RD Scanning - Anti-Leukotriene A4

hydrolase/LTA4H antibody [EPR5713] (ab133512)

Equilibrium disassociation constant (K_D)

Learn more about K_D

[Click here to learn more about \$K_D\$](#)

Why choose a
recombinant antibody?



Research with confidence
 Consistent and reproducible results



Long-term and scalable supply
 Recombinant technology



Success from the first experiment
 Confirmed specificity



Ethical standards compliant
 Animal-free production

Anti-Leukotriene A4 hydrolase/LTA4H antibody
 [EPR5713] (ab133512)

Please note: All products are "FOR RESEARCH USE ONLY. NOT FOR USE IN DIAGNOSTIC PROCEDURES"

Our Abpromise to you: Quality guaranteed and expert technical support

- Replacement or refund for products not performing as stated on the datasheet
- Valid for 12 months from date of delivery
- Response to your inquiry within 24 hours
- We provide support in Chinese, English, French, German, Japanese and Spanish
- Extensive multi-media technical resources to help you
- We investigate all quality concerns to ensure our products perform to the highest standards

If the product does not perform as described on this datasheet, we will offer a refund or replacement. For full details of the Abpromise, please visit <https://www.abcam.cn/abpromise> or contact our technical team.

Terms and conditions

- Guarantee only valid for products bought direct from Abcam or one of our authorized distributors