




Anti-LDB2 antibody ab3627

1 Abreviews 2 References 1 图像

概述	
产品名称	Anti-LDB2抗体
描述	兔多克隆抗体to LDB2
宿主	Rabbit
特异性	This antibody detects a single clean band representing LDB2 at 42kD in human kidney and mouse spleen.
经测试应用	适用于: WB
种属反应性	与反应: Mouse, Human 预测可用于: Chicken 
免疫原	Synthetic peptide: SKESYHNSSITVDC conjugated to KLH, corresponding to amino acids 107-120 of Human LDB2.  Run BLAST with  Run BLAST with
常规说明	<p>The Life Science industry has been in the grips of a reproducibility crisis for a number of years. Abcam is leading the way in addressing this with our range of recombinant monoclonal antibodies and knockout edited cell lines for gold-standard validation. Please check that this product meets your needs before purchasing.</p> <p>If you have any questions, special requirements or concerns, please send us an inquiry and/or contact our Support team ahead of purchase. Recommended alternatives for this product can be found below, along with publications, customer reviews and Q&As</p>
性能	
形式	Liquid
存放说明	Shipped at 4°C. Upon delivery aliquot and store at -20°C or -80°C. Avoid repeated freeze / thaw cycles.
存储溶液	Preservative: 0.01% Sodium azide Constituents: 0.42% Potassium phosphate, 0.87% Sodium chloride
纯度	Immunogen affinity purified
克隆	多克隆
同种型	IgG

应用

The Abpromise guarantee

Abpromise™ 承诺保证使用ab3627于以下的经测试应用

“应用说明”部分 下显示的仅为推荐的起始稀释度;实际最佳的稀释度/浓度应由使用者检定。

应用	Ab评论	说明
WB		

应用说明

ICC/IF: Use at an assay dependent dilution (PMID 19675209).

WB: 1/500. Detects a band of approximately 42 kDa (predicted molecular weight: 42.7 kDa).

Not yet tested in other applications.

Optimal dilutions/concentrations should be determined by the end user.

靶标

功能

Binds to the LIM domain of a wide variety of LIM domain-containing transcription factors.

序列相似性

Belongs to the LDB family.

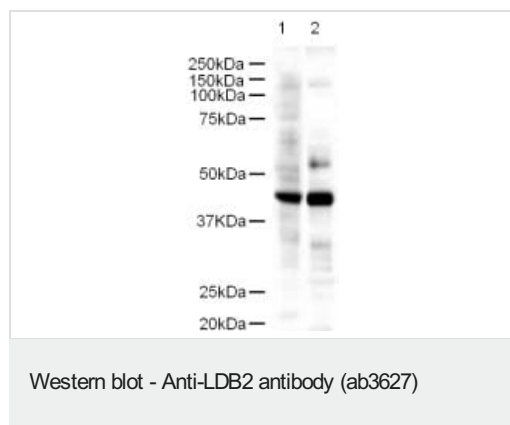
翻译后修饰

Ubiquitinated by RLIM/RNF12, leading to its degradation by the proteasome.

细胞定位

Nucleus.

图片



Western blot using ab3627 at 1/500.

Lane 1: Human Kidney

Lane 2: Mouse Spleen

Lysates at 18µg per lane.

Secondary ab: Goat polyclonal to Rabbit IgG H&L (HRP) Pre-Adsorbed

ab7090 (1/5000).

Exposure time: 1 minute.

Please note: All products are "FOR RESEARCH USE ONLY. NOT FOR USE IN DIAGNOSTIC PROCEDURES"

Our Abpromise to you: Quality guaranteed and expert technical support

- Replacement or refund for products not performing as stated on the datasheet
- Valid for 12 months from date of delivery
- Response to your inquiry within 24 hours
- We provide support in Chinese, English, French, German, Japanese and Spanish

- Extensive multi-media technical resources to help you
- We investigate all quality concerns to ensure our products perform to the highest standards

If the product does not perform as described on this datasheet, we will offer a refund or replacement. For full details of the Abpromise, please visit <https://www.abcam.cn/abpromise> or contact our technical team.

Terms and conditions

- Guarantee only valid for products bought direct from Abcam or one of our authorized distributors