


### Anti-LDB1 antibody ab96799

★★★★★ [1 Abreviews](#) [7 References](#) [9 图像](#)

#### 概述

产品名称	Anti-LDB1抗体
描述	兔多克隆抗体to LDB1
宿主	Rabbit
经测试应用	适用于: WB, IHC-P, ICC/IF, IP
种属反应性	与反应: Mouse, Rat, Human 预测可用于: Pig, Zebrafish 
免疫原	Recombinant fragment corresponding to a region within amino acids 50 and 345 of Human LDB1 (NP_003884)
阳性对照	WB: HEK293T, A431, HeLa, HepG2 and Raji cell lysates; Mouse brain tissue lysate. IHC-P: U87 xenograft; Mouse muscle and brain tissues. IHC-Fr: Mouse brain tissue. ICC/IF: HeLa cells. IP: HEK293T cells.
常规说明	<p>The Life Science industry has been in the grips of a reproducibility crisis for a number of years. Abcam is leading the way in addressing this with our range of recombinant monoclonal antibodies and knockout edited cell lines for gold-standard validation. Please check that this product meets your needs before purchasing.</p> <p>If you have any questions, special requirements or concerns, please send us an inquiry and/or contact our Support team ahead of purchase. Recommended alternatives for this product can be found below, along with publications, customer reviews and Q&amp;As</p>

#### 性能

形式	Liquid
存放说明	Shipped at 4°C. Upon delivery aliquot. Store at -20°C or -80°C. Avoid freeze / thaw cycle.
存储溶液	pH: 7.00 Preservative: 0.025% Proclin 300 Constituents: 79% PBS, 20% Glycerol (glycerin, glycerine)
纯度	Immunogen affinity purified
克隆	多克隆
同种型	IgG

应用

The Abpromise guarantee      **Abpromise™**承诺保证使用ab96799于以下的经测试应用

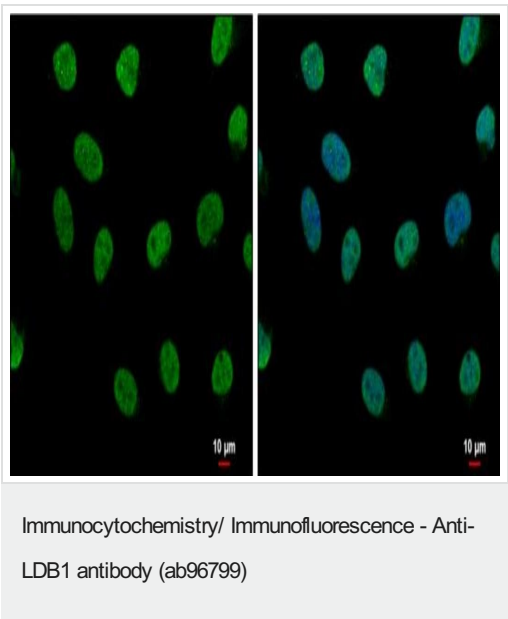
“应用说明”部分 下显示的仅为推荐的起始稀释度;实际最佳的稀释度/浓度应由使用者检定。

应用	Ab评论	说明
WB		1/500 - 1/3000. Predicted molecular weight: 47 kDa.
IHC-P		1/100 - 1/1000.
ICC/IF		1/100 - 1/1000.
IP		Use at an assay dependent concentration.

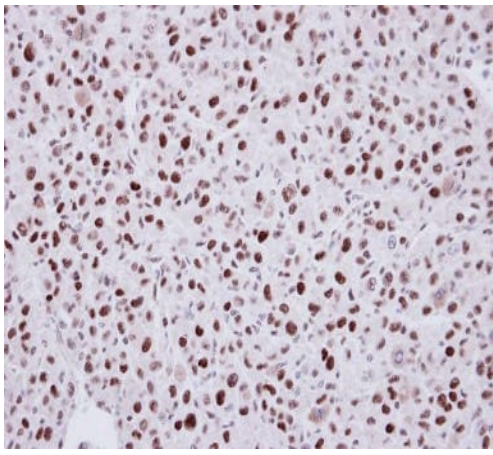
靶标

功能	Binds to the LIM domain of a wide variety of LIM domain-containing transcription factors. May regulate the transcriptional activity of LIM-containing proteins by determining specific partner interactions. May play a role in the development of motor neurons. Acts synergistically with LHX1/LIM1 in axis formation and activation of gene expression. Acts with LMO2 in the regulation of red blood cell development, maintaining erythroid precursors in an immature state.
组织特异性	Expressed in a wide range of adult tissues including brain, heart, skeletal muscle, colon, thymus, spleen, kidney, liver, small intestine, lung and peripheral blood leukocytes.
序列相似性	Belongs to the LDB family.
结构域	The dimerization domain is located in the N-terminus.
翻译后修饰	Ubiquitinated by RLIM/RNF12, leading to its degradation by the proteasome.
细胞定位	Nucleus.

图片

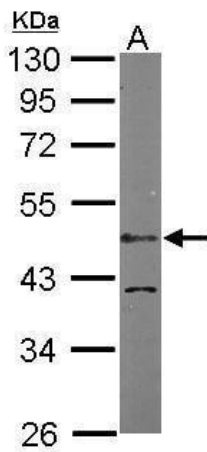


HeLa cells stained for LDB1 (green) using ab96799 at 1/500 dilution in ICC/IF.



Immunohistochemistry (Formalin/PFA-fixed paraffin-embedded sections) - Anti-LDB1 antibody (ab96799)

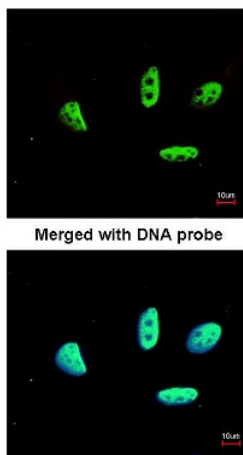
Immunohistochemical analysis of paraffin-embedded U87 xenograft using ab96799 at a dilution of 1/100.



Anti-LDB1 antibody (ab96799) at 1/1000 dilution + Mouse brain lysate at 50 µg

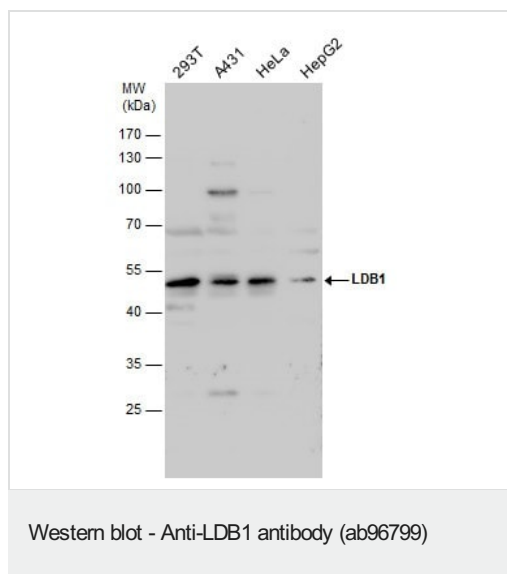
**Predicted band size: 47 kDa**

Western blot - Anti-LDB1 antibody (ab96799)



Immunofluorescence analysis of paraformaldehyde-fixed HeLa cells using ab96799 at a dilution of 1/200.

Immunocytochemistry/ Immunofluorescence - Anti-LDB1 antibody (ab96799)



**All lanes :** Anti-LDB1 antibody (ab96799) at 1/1000 dilution

**Lane 1 :** HEK-293T (human epithelial cell line from embryonic kidney transformed with large T antigen) whole cell lysate

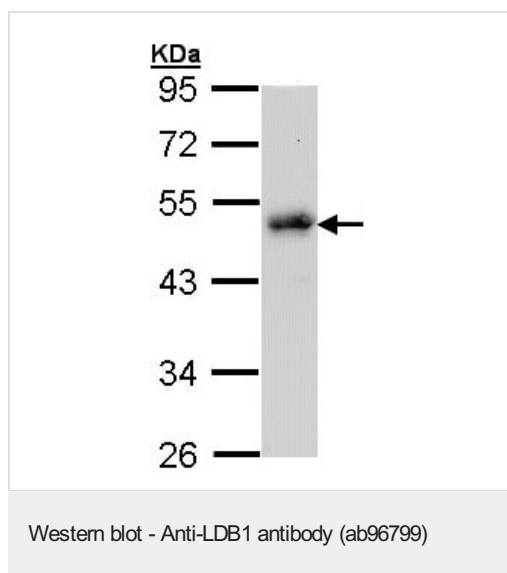
**Lane 2 :** A431 (human epidermoid carcinoma cell line) whole cell lysate

**Lane 3 :** HeLa (human epithelial cell line from cervix adenocarcinoma) whole cell lysate

**Lane 4 :** HepG2 (human liver hepatocellular carcinoma cell line) whole cell lysate

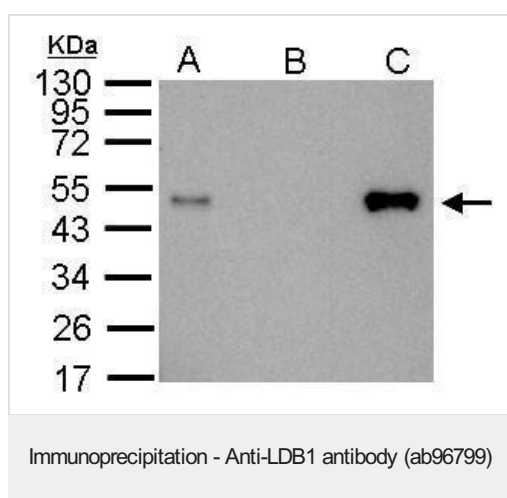
Lysates/proteins at 30 µg per lane.

**Predicted band size:** 47 kDa



Anti-LDB1 antibody (ab96799) at 1/1000 dilution + Raji whole cell lysate at 30 µg

**Predicted band size:** 47 kDa



LDB1 was immunoprecipitated from 1000 µg 293T (human epithelial cell line from embryonic kidney transformed with large T antigen) whole cell lysate with ab96799. Western blot was performed from the immunoprecipitate using 2.5 µg of ab96799 at 1/1000 dilution.

**Lane A:** 20 µg 293T whole cell lysate/extract.

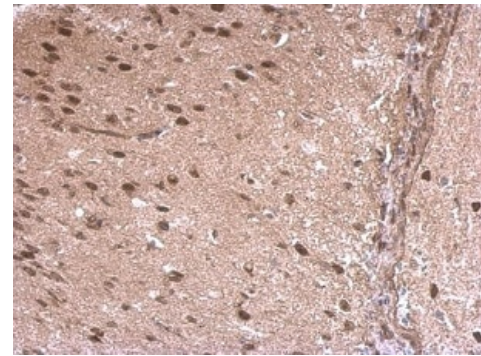
**Lane B:** Control with 2.5 µg of preimmune rabbit IgG.

**Lane C:** ab96799 IP in 293T (12% SDS-PAGE).



Immunohistochemistry (Formalin/PFA-fixed paraffin-embedded sections) - Anti-LDB1 antibody (ab96799)

Paraffin-embedded mouse muscle tissue stained for LDB1 using ab96799 at 1/500 dilution in immunohistochemical analysis.



Immunohistochemistry (Formalin/PFA-fixed paraffin-embedded sections) - Anti-LDB1 antibody (ab96799)

Paraffin-embedded rat middle brain tissue stained for LDB1 using ab96799 at a/500 dilution in immunohistochemical analysis.

**Please note:** All products are "FOR RESEARCH USE ONLY. NOT FOR USE IN DIAGNOSTIC PROCEDURES"

### Our Abpromise to you: Quality guaranteed and expert technical support

- Replacement or refund for products not performing as stated on the datasheet
- Valid for 12 months from date of delivery
- Response to your inquiry within 24 hours
- We provide support in Chinese, English, French, German, Japanese and Spanish
- Extensive multi-media technical resources to help you
- We investigate all quality concerns to ensure our products perform to the highest standards

If the product does not perform as described on this datasheet, we will offer a refund or replacement. For full details of the Abpromise, please visit <https://www.abcam.cn/abpromise> or contact our technical team.

## Terms and conditions

---

- Guarantee only valid for products bought direct from Abcam or one of our authorized distributors