

Anti-LC3C antibody [EPR8076] ab167421

重组 RabMAb

3 图像

概述

产品名称	Anti-LC3C抗体[EPR8076]
描述	兔单克隆抗体[EPR8076] to LC3C
宿主	Rabbit
经测试应用	适用于: WB, IHC-P 不适用于: ICC/IF or IP
种属反应性	与反应: Human
免疫原	Synthetic peptide corresponding to Human LC3C.
阳性对照	LC3C transfected 293T cell lysates, paraffin-embedded Human lung tissue.
常规说明	<p>This product is a recombinant monoclonal antibody, which offers several advantages including:</p> <ul style="list-style-type: none"> - High batch-to-batch consistency and reproducibility - Improved sensitivity and specificity - Long-term security of supply - Animal-free production <p>For more information see here.</p> <p>Our RabMAb[®] technology is a patented hybridoma-based technology for making rabbit monoclonal antibodies. For details on our patents, please refer to RabMAb[®] patents.</p> <p>Mouse, Rat: We have preliminary internal testing data to indicate this antibody may not react with these species. Please contact us for more information.</p>

性能

形式	Liquid
存放说明	Shipped at 4°C. Store at +4°C short term (1-2 weeks). Upon delivery aliquot. Store at -20°C long term.
存储溶液	<p>pH: 7.2</p> <p>Preservative: 0.01% Sodium azide</p> <p>Constituents: 9% PBS, 40% Glycerol (glycerin, glycerine), 0.05% BSA, 50% Tissue culture supernatant</p>
纯度	Protein A purified

克隆	单克隆
克隆编号	EPR8076
同种型	IgG

应用

The Abpromise guarantee

Abpromise™承诺保证使用ab167421于以下的经测试应用

“应用说明”部分 下显示的仅为推荐的起始稀释度;实际最佳的稀释度/浓度应由使用者检定。

应用	Ab评论	说明
WB		1/10000 - 1/50000. Predicted molecular weight: 17 kDa.
IHC-P		1/100 - 1/250. Perform heat mediated antigen retrieval with citrate buffer pH 6 before commencing with IHC staining protocol.

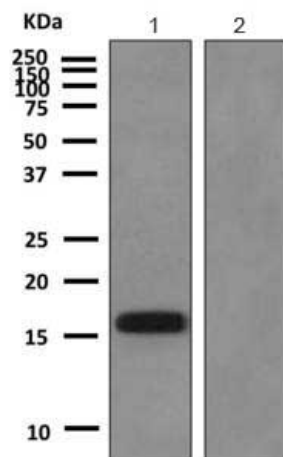
应用说明

Is unsuitable for ICC/IF or IP.

靶标

功能	Probably involved in formation of autophagosomal vacuoles (autophagosomes).
组织特异性	Most abundant in placenta, lung and ovary.
序列相似性	Belongs to the MAP1 LC3 family.
翻译后修饰	The precursor molecule is cleaved by APG4B/ATG4B to form the cytosolic form, LC3-I. This is activated by APG7L/ATG7, transferred to ATG3 and conjugated to phospholipid to form the membrane-bound form, LC3-II.
细胞定位	Cytoplasm > cytoskeleton. Endomembrane system. Cytoplasmic vesicle > autophagosome membrane. LC3-II binds to the autophagic membranes.

图片



Western blot - Anti-LC3C antibody [EPR8076] (ab167421)

All lanes : Anti-LC3C antibody [EPR8076] (ab167421) at 1/10000 dilution

Lane 1 : LC3C transfected 293T cell lysate

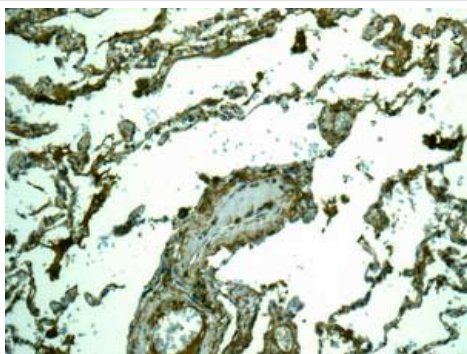
Lane 2 : Mock transfected 293T cell lysate

Lysates/proteins at 10 µg per lane.

Secondary

All lanes : Goat anti-rabbit HRP antibody at 1/2000 dilution

Predicted band size: 17 kDa



Immunohistochemistry (Formalin/PFA-fixed paraffin-embedded sections) - Anti-LC3C antibody [EPR8076] (ab167421)

Immunohistochemical analysis of paraffin-embedded Human lung tissue labeling LC3C with ab167421 at 1/100 dilution.

Perform heat mediated antigen retrieval with citrate buffer pH 6 before commencing with IHC staining protocol.

Why choose a recombinant antibody?



Research with confidence
Consistent and reproducible results



Long-term and scalable supply
Recombinant technology



Success from the first experiment
Confirmed specificity



Ethical standards compliant
Animal-free production

Anti-LC3C antibody [EPR8076] (ab167421)

Please note: All products are "FOR RESEARCH USE ONLY. NOT FOR USE IN DIAGNOSTIC PROCEDURES"

Our Abpromise to you: Quality guaranteed and expert technical support

- Replacement or refund for products not performing as stated on the datasheet
- Valid for 12 months from date of delivery
- Response to your inquiry within 24 hours

- We provide support in Chinese, English, French, German, Japanese and Spanish
- Extensive multi-media technical resources to help you
- We investigate all quality concerns to ensure our products perform to the highest standards

If the product does not perform as described on this datasheet, we will offer a refund or replacement. For full details of the Abpromise, please visit <https://www.abcam.cn/abpromise> or contact our technical team.

Terms and conditions

- Guarantee only valid for products bought direct from Abcam or one of our authorized distributors