

Anti-LC3B antibody [EPR18709] - Autophagosome Marker ab192890

敲除验证
重组
RabMAb

★★★★★
[17 Abreviews](#)
[305 References](#)
[12 图像](#)

概述

产品名称	Anti-LC3B抗体[EPR18709] - Autophagosome Marker
描述	兔单克隆抗体[EPR18709] to LC3B - Autophagosome Marker
宿主	Rabbit
经测试应用	适用于: IHC-P, WB, ICC/IF 不适用于: IP
种属反应性	与反应: Mouse, Rat, Human
免疫原	Synthetic peptide. This information is proprietary to Abcam and/or its suppliers.
阳性对照	WB: BMDM, U-87 MG, C6 and RAW 264.7 whole cell lysates; Human brain, mouse heart, rat heart, mouse brain and rat brain lysates. ICC/IF: HeLa cells (+/- chloroquine), HAP1 cells (+/- chloroquine) (HAP1-MAP1LC3B knockout cells used as negative cell line). IHC-P: Human Cerebral Cortex tissue sections
常规说明	<p>This product is a recombinant monoclonal antibody, which offers several advantages including:</p> <ul style="list-style-type: none"> - High batch-to-batch consistency and reproducibility - Improved sensitivity and specificity - Long-term security of supply - Animal-free production <p>For more information see here.</p> <p>Our RabMAb[®] technology is a patented hybridoma-based technology for making rabbit monoclonal antibodies. For details on our patents, please refer to RabMAb[®] patents.</p>

性能

形式	Liquid
存放说明	Shipped at 4°C. Store at +4°C short term (1-2 weeks). Upon delivery aliquot. Store at -20°C long term. Avoid freeze / thaw cycle.
存储溶液	<p>pH: 7.20</p> <p>Preservative: 0.01% Sodium azide</p> <p>Constituents: 59% PBS, 40% Glycerol (glycerin, glycerine), 0.05% BSA</p>

纯度	Protein A purified
克隆	单克隆
克隆编号	EPR18709
同种型	IgG

应用

The Abpromise guarantee **Abpromise™承诺保证使用ab192890于以下的经测试应用**

“应用说明”部分下显示的仅为推荐的起始稀释度;实际最佳的稀释度/浓度应由使用者检定。

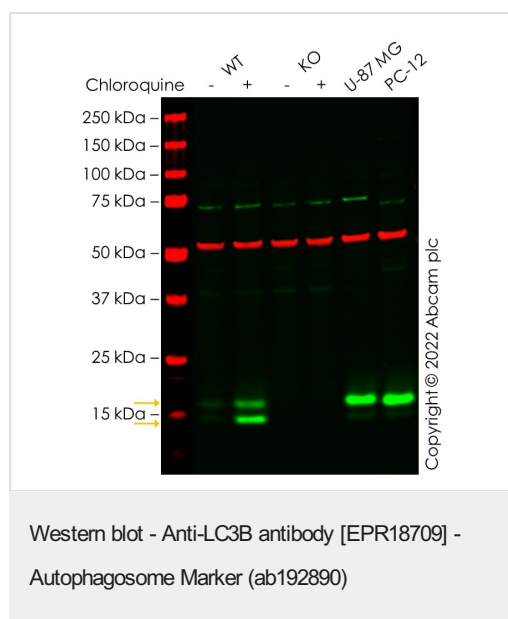
应用	Ab评论	说明
IHC-P		Use a concentration of 0.1 µg/ml. Perform heat mediated antigen retrieval with citrate buffer pH 6 before commencing with IHC staining protocol.
WB	★★★★★ (8)	1/2000. Detects a band of approximately 14, 16 kDa (predicted molecular weight: 15 kDa).
ICC/IF	★★★★★ (6)	Use a concentration of 1 µg/ml.

应用说明 Is unsuitable for IP.

靶标

功能	Probably involved in formation of autophagosomal vacuoles (autophagosomes).
组织特异性	Most abundant in heart, brain, skeletal muscle and testis. Little expression observed in liver.
序列相似性	Belongs to the MAP1 LC3 family.
翻译后修饰	The precursor molecule is cleaved by APG4B/ATG4B to form LC3-I. This is activated by APG7L/ATG7, transferred to ATG3 and conjugated to phospholipid to form LC3-II.
细胞定位	Cytoplasm > cytoskeleton. Endomembrane system. Cytoplasmic vesicle > autophagosome membrane. LC3-II binds to the autophagic membranes.

图片



All lanes : Anti-LC3B antibody [EPR18709] - Autophagosome Marker (ab192890) at 1/2000 dilution

Lane 1 : Wild-type HepG2 untreated control cell lysate

Lane 2 : Wild-type HepG2 Treated Chloroquine (50 uM, 16 h) cell lysate

Lane 3 : MAP1LC3B knockout HepG2 untreated control cell lysate

Lane 4 : MAP1LC3B knockout HepG2 Treated Chloroquine (50 uM, 16 h) cell lysate

Lane 5 : U-87 MG cell lysate

Lane 6 : PC-12 cell lysate

Lysates/proteins at 20 µg per lane.

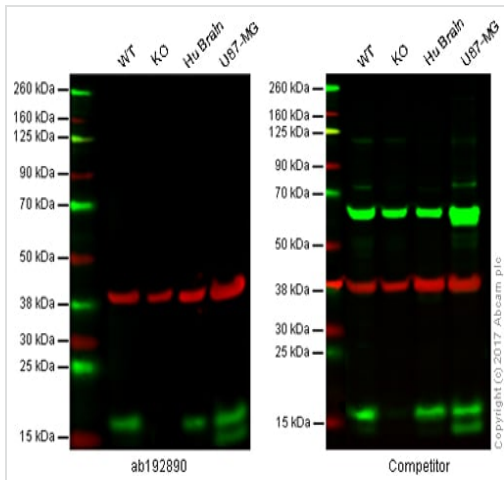
Performed under reducing conditions.

Predicted band size: 15 kDa

Observed band size: 14,16 kDa

False colour image of Western blot: Anti-LC3B antibody [EPR18709] - Autophagosome Marker staining at 1/2000 dilution, shown in green; Mouse anti-Alpha Tubulin [DM1A] ([ab7291](#)) loading control staining at 1/20000 dilution, shown in red. In Western blot, ab192890 was shown to bind specifically to LC3B. A band was observed at 16/14 kDa (yellow arrows) in treated wild-type HepG2 cell lysates with no signal observed at this size in MAP1LC3B knockout cell line [ab277828](#) (knockout cell lysate [ab283796](#)). To generate this image, wild-type and MAP1LC3B knockout HepG2 cell lysates were analysed. First, samples were run on an SDS-PAGE gel then transferred onto a nitrocellulose membrane. Membranes were blocked in 3 % milk in TBS-0.1 % Tween[®] 20 (TBS-T) before incubation with primary antibodies

overnight at 4 °C. Blots were washed four times in TBS-T, incubated with secondary antibodies for 1 h at room temperature, washed again four times then imaged. Secondary antibodies used were Goat anti-Rabbit IgG H&L 800CW and Goat anti-Mouse IgG H&L 680RD at 1/20000 dilution.



Western blot - Anti-LC3B antibody [EPR18709] - Autophagosome Marker (ab192890)

Lane 1: Wild-type HAP1 cell lysate (20 µg)

Lane 2: LC3B knockout HAP1 cell lysate (20 µg)

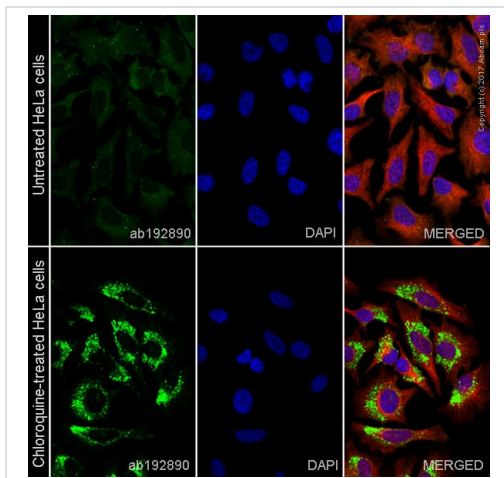
Lane 3: Human brain tissue lysate (20 µg)

Lane 4: U-87 MG cell lysate (20 µg)

Lanes 1 - 4: Merged signal (red and green).

Green -target observed at 14 and 16 kDa. Red - loading control, **ab8245**, observed at 37 kDa.

This western blot image is a comparison between ab192890 and a competitor's top cited rabbit polyclonal antibody.



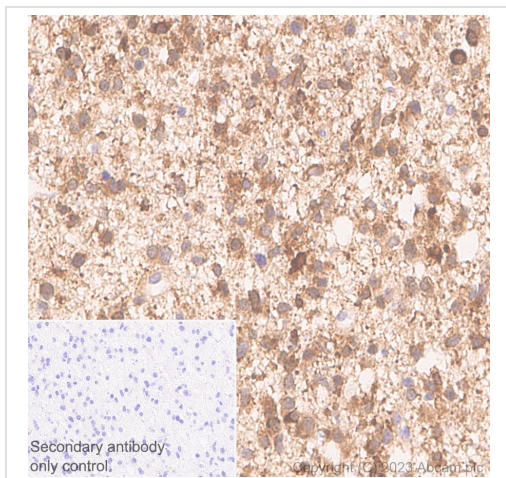
Immunocytochemistry/ Immunofluorescence - Anti-LC3B antibody [EPR18709] - Autophagosome Marker (ab192890)

ab192890 staining LC3B in HeLa (Human epithelial cell line from cervix adenocarcinoma) cells +/- Chloroquine (50µM, 24 hours).

The cells were fixed with 100% methanol (5 min), permeabilized with 0.1% Triton X-100 for 5 minutes and then blocked with 1% BSA/10% normal goat serum/0.3M glycine in 0.1% PBS-Tween for 1h. The cells were then incubated overnight at +4°C with ab192890 at 1µg/ml and **ab195889**, Mouse monoclonal to alpha Tubulin (Alexa Fluor® 594), at 1/250 dilution (shown in pseudocolor red) followed by a further incubation at room temperature for 1h with a goat secondary antibody to Rabbit IgG (Alexa Fluor® 488) (**ab150081**) at 2 µg/ml (shown in green). Nuclear DNA was labeled with DAPI (shown in blue).

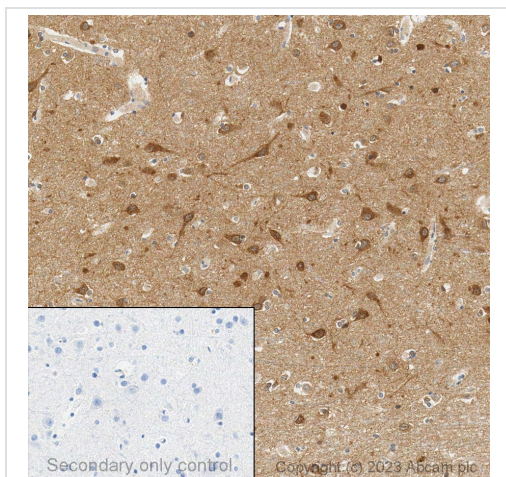
Image was taken with a confocal microscope (Leica-Microsystems, TCS SP8).

Alexa Fluor® 488 (**ab225383**) and Alexa Fluor® 647 (**ab225382**) conjugated versions are available for this clone.



Immunohistochemistry (Formalin/PFA-fixed paraffin-embedded sections) - Anti-LC3B antibody [EPR18709] - Autophagosome Marker (ab192890)

ab192890 staining LC3B in paraffin embedded human astrocytoma tissue by Immunohistochemistry. Heat mediated antigen retrieval was performed with Citrate buffer (pH 6.0, Epitope Retrieval Solution 1) for 20 mins. Samples were incubated with primary antibody at 1/1000 dilution for 30 mins at room temperature. Ready to use LeicaDS9800 (Bond™ Polymer Refine Detection) was used as the secondary antibody. Hematoxylin was used as a counterstain. The immunostaining was performed on a Leica Biosystems BOND® RX instrument.

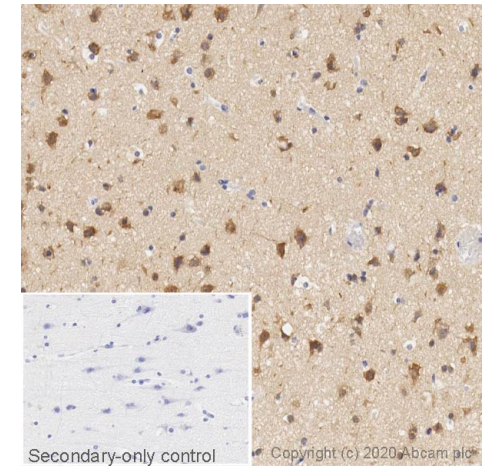


Immunohistochemistry (Formalin/PFA-fixed paraffin-embedded sections) - Anti-LC3B antibody [EPR18709] - Autophagosome Marker (ab192890)

Immunohistochemical analysis of formalin fixed paraffin embedded human cortex labelling LC3B with ab192890 at a dilution of 0.1 µg/ml. The immunostaining was performed on a Ventana DISCOVERY ULTRA (Roche Tissue Diagnostics) instrument with an OptiView DAB IHC Detection Kit. Heat mediated antigen retrieval was conducted for 32min with ULTRA cell conditioning solution (CC1 pH8.5) . ab192890 anti LC3B antibody was incubated at 37°C for 16min. Sections were counterstained is with Hematoxylin II. Image inset shows absence of staining in secondary antibody only control

Tissue Microarray (TMA) data for ab192890					
Normal tissue samples			Malignant tissue samples		
Human cardiac muscle	x	Human placenta	x	Clear cell carcinoma of human kidney	x
Human cerebrium	✓	Human skeletal muscle	x	Human bladder cancer	x
Human colon	x	Human skin	x	Human breast carcinoma	x
Human endometrium	x	Human spleen	x	Human cervical carcinoma	x
Human kidney	x	Human stomach	x	Human colon carcinoma	x
Human liver	x	Human testis	x	Human endometrial carcinoma	x
Human lung	x	Human thyroid	x	Human gastric adenocarcinoma	x
Human mammary gland	x	Human tonsil	x		
Human pancreas	x				
				Human glioma	✓
				Human hepatocellular carcinoma	x
				Human lung carcinoma	x
				Human ovarian carcinoma	x
				Human pancreatic carcinoma	x
				Human prostatic hyperplasia	x
				Human thyroid carcinoma	x

Immunohistochemistry (Formalin/PFA-fixed paraffin-embedded sections) - Anti-LC3B antibody [EPR18709] - Autophagosome Marker (ab192890)



Immunohistochemistry (Formalin/PFA-fixed paraffin-embedded sections) - Anti-LC3B antibody [EPR18709] - Autophagosome Marker (ab192890)

Tissue Microarrays stained for Anti-LC3B antibody [EPR18709] - Autophagosome Marker using ab192890 in immunohistochemical analysis. This table provides a detailed overview of positive (tick mark) and negative (cross mark) staining per sample type tested.

Heat mediated antigen retrieval was performed with Citrate buffer (pH 6.0, Epitope Retrieval Solution 1) for 20 mins.

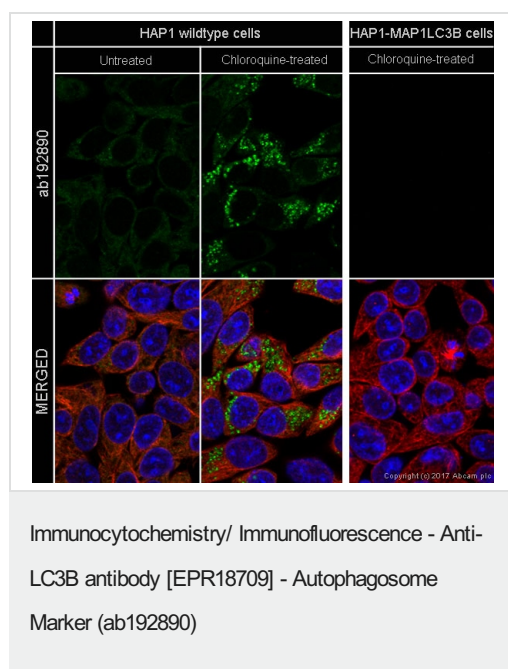
The section was incubated with ab192890 for 30 mins at room temperature.

The immunostaining was performed on a Leica Biosystems BOND® RX instrument.

IHC image of LC3B staining in a section of formalin-fixed paraffin-embedded normal human cerebral cortex* performed on a Leica BOND™system using the standard protocol **F**. The section was pre-treated using heat mediated antigen retrieval with sodium citrate buffer (pH6, epitope retrieval solution 1) for 20mins. The section was then incubated with **ab221794**, 0.1ug/ml, for 15 mins at room temperature and detected using an HRP conjugated compact polymer system. DAB was used as the chromogen. The section was then counterstained with haematoxylin and mounted with DPX. The inset secondary-only control image is taken from an identical assay without primary antibody.

For other IHC staining systems (automated and non-automated) customers should optimize variable parameters such as antigen retrieval conditions, primary antibody concentration and antibody incubation times.

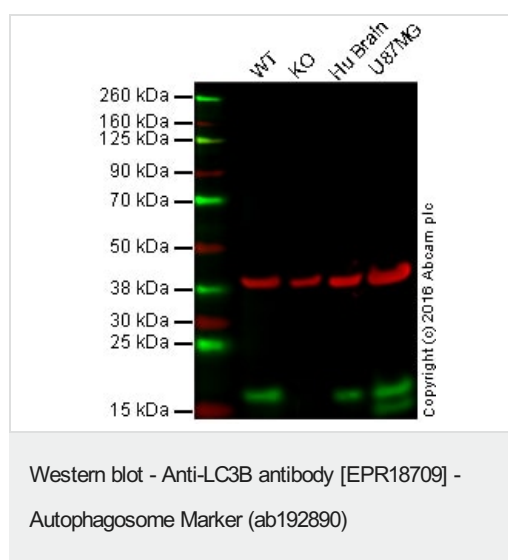
This data was developed using the same antibody clone in a different buffer formulation containing only PBS (**ab221794**).



ab192890 staining LC3B in HAP1 cells (wildtype and MAP1LC3B knockout) +/- Chloroquine (50μM, 24 hours).

The cells were fixed with 100% methanol (5 min), permeabilized with 0.1% Triton X-100 for 5 minutes and then blocked with 1% BSA/10% normal goat serum/0.3M glycine in 0.1% PBS-Tween for 1h. The cells were then incubated overnight at +4°C with ab192890 at 1 μg/ml and **ab195889**, Mouse monoclonal to alpha Tubulin (Alexa Fluor® 594), at 1/250 dilution (shown in pseudocolor red) followed by a further incubation at room temperature for 1h with a goat secondary antibody to Rabbit IgG (Alexa Fluor® 488) (**ab150081**) at 2 μg/ml (shown in green). Nuclear DNA was labeled with DAPI (shown in blue).

Image was taken with a confocal microscope (Leica-Microsystems, TCS SP8).



Lane 1: Wild-type HAP1 cell lysate (20 μg)

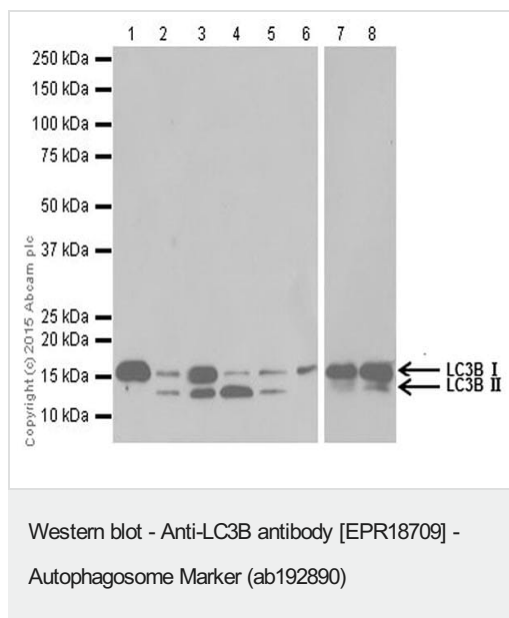
Lane 2: LC3B knockout HAP1 cell lysate (20 μg)

Lane 3: Human brain tissue lysate (20 μg)

Lane 4: U-87 MG cell lysate (20 μg)

Lanes 1 - 4: Merged signal (red and green). Green - ab192890 observed at 14 and 16 kDa. Red - loading control, **ab8245**, observed at 37 kDa.

ab192890 was shown to specifically react with LC3B in wild-type HAP1 cells. No band was observed when LC3B knockout samples were examined. Wild-type and LC3B knockout samples were subjected to SDS-PAGE. ab192890 and **ab8245** (loading control to GAPDH) were diluted 1/2000 and 1/10,000 respectively and incubated overnight at 4°C. Blots were developed with Goat anti-Rabbit IgG H&L (IRDye® 800CW) preadsorbed (**ab216773**) and Goat anti-Mouse IgG H&L (IRDye® 680RD) preadsorbed (**ab216776**) secondary antibodies at 1/10,000 dilution for 1 hour at room temperature before imaging.



All lanes : Anti-LC3B antibody [EPR18709] - Autophagosome Marker (ab192890) at 1/2000 dilution

Lane 1 : Human brain lysate

Lane 2 : U-87 MG (Human glioblastoma-astrocytoma epithelial cell line) whole cell lysate

Lane 3 : C6 (Rat glial tumor cell line) whole cell lysate

Lane 4 : RAW 264.7 (Mouse macrophage cell line transformed with Abelson murine leukemia virus) whole cell lysate

Lane 5 : Mouse heart lysate

Lane 6 : Rat heart lysate

Lane 7 : Mouse brain lysate

Lane 8 : Rat brain lysate

Lysates/proteins at 20 µg per lane.

Secondary

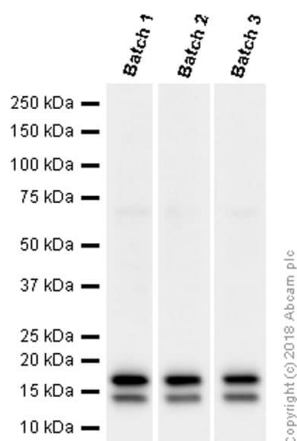
All lanes : Goat Anti-Rabbit IgG Peroxidase Conjugate, specific to the non-reduced form of IgG at 1/10000 dilution

Predicted band size: 15 kDa

Observed band size: 14,16 kDa

Blocking/Dilution buffer: 5% NFDM/TBST.

Exposure times: Lane 1-6: 3 minutes; Lane 7 and 8: 30 seconds.



Different batches of ab192890 were tested on U-87 MG (Human glioblastoma-astrocytoma epithelial cell line) lysate at 0.9 µg/ml. 15 µg of lysate was loaded in each lane. Bands observed at 14, 16 kDa.

Western blot - Anti-LC3B antibody [EPR18709] - Autophagosome Marker (ab192890)

Why choose a recombinant antibody?



Research with confidence
Consistent and reproducible results



Long-term and scalable supply
Recombinant technology



Success from the first experiment
Confirmed specificity



Ethical standards compliant
Animal-free production

Anti-LC3B antibody [EPR18709] - Autophagosome Marker (ab192890)

Please note: All products are "FOR RESEARCH USE ONLY. NOT FOR USE IN DIAGNOSTIC PROCEDURES"

Our Abpromise to you: Quality guaranteed and expert technical support

- Replacement or refund for products not performing as stated on the datasheet
- Valid for 12 months from date of delivery
- Response to your inquiry within 24 hours
- We provide support in Chinese, English, French, German, Japanese and Spanish
- Extensive multi-media technical resources to help you
- We investigate all quality concerns to ensure our products perform to the highest standards

If the product does not perform as described on this datasheet, we will offer a refund or replacement. For full details of the Abpromise, please visit <https://www.abcam.cn/abpromise> or contact our technical team.

Terms and conditions

- Guarantee only valid for products bought direct from Abcam or one of our authorized distributors