

# Anti-LAMP1 antibody [25/Lamp-1] ab289548

敲除验证 重组

2 References 5 图像

### 概述

产品名称	Anti-LAMP1抗体[25/Lamp-1]
描述	小鼠单克隆抗体[25/Lamp-1] to LAMP1
宿主	Mouse
经测试应用	适用于: WB, Flow Cyt (Intra), ICC/IF 不适用于: IP
种属反应性	与反应: Human
免疫原	Recombinant fragment. This information is proprietary to Abcam and/or its suppliers.
阳性对照	WB: Wild-type HAP1, HepG2, HeLa and MCF whole cell lysate. Human kidney and spleen lysate. Human colon cancer lysate. ICC/IF: HeLa cells. Flow Cyt (Intra): HeLa cells.
常规说明	This product is a recombinant monoclonal antibody, which offers several advantages including: <ul style="list-style-type: none"><li>- High batch-to-batch consistency and reproducibility</li><li>- Improved sensitivity and specificity</li><li>- Long-term security of supply</li><li>- Animal-free production</li></ul> For more information <a href="#">see here</a> .

### 性能

形式	Liquid
存放说明	Shipped at 4°C. Store at +4°C short term (1-2 weeks). Upon delivery aliquot. Store at -20°C long term. Avoid freeze / thaw cycle.
存储溶液	pH: 7.2 Preservative: 0.01% Sodium azide Constituents: 59% PBS, 40% Glycerol (glycerin, glycerine), 0.05% BSA
纯度	Protein A purified
克隆	单克隆
克隆编号	25/Lamp-1
同种型	IgG2b

## 应用

### The Abpromise guarantee

**Abpromise™** 承诺保证使用 ab289548 于以下的经测试应用

“应用说明”部分 下显示的仅为推荐的起始稀释度;实际最佳的稀释度/浓度应由使用者检定。

应用	Ab评论	说明
WB		1/1000. Predicted molecular weight: 45 kDa.
Flow Cyt (Intra)		1/1000.
ICC/IF		1/100.

### 应用说明

Is unsuitable for IP.

## 靶标

### 功能

Presents carbohydrate ligands to selectins. Also implicated in tumor cell metastasis.

### 序列相似性

Belongs to the LAMP family.

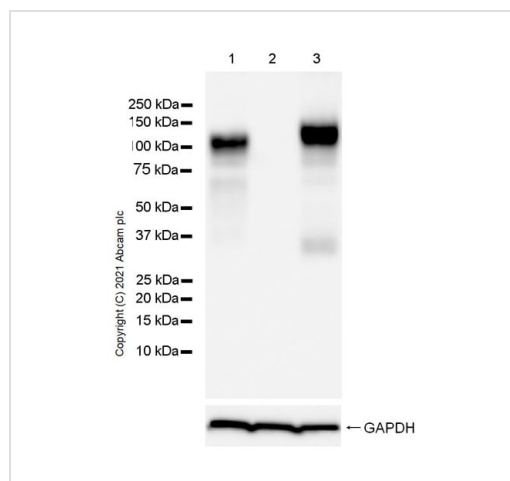
### 翻译后修饰

O- and N-glycosylated; some of the 18 N-linked glycans are polylactosaminoglycans.

### 细胞定位

Cell membrane. Endosome membrane. Lysosome membrane. This protein shuttles between lysosomes, endosomes, and the plasma membrane.

## 图片



Western blot - Anti-LAMP1 antibody [25/Lamp-1]  
(ab289548)

**All lanes :** Anti-LAMP1 antibody [25/Lamp-1] (ab289548) at 1/1000 dilution

**Lane 1 :** Wild-type HAP1 (human chronic myelogenous leukemia near-haploid cell) whole cell lysate

**Lane 2 :** LAMP1 knockout HAP1 whole cell lysate

**Lane 3 :** HepG2 (human hepatocellular carcinoma epithelial cell), whole cell lysate

Lysates/proteins at 20 µg per lane.

### Secondary

**All lanes :** Peroxidase-Conjugated Goat anti-Mouse IgG (H+L) at 1/10000 dilution

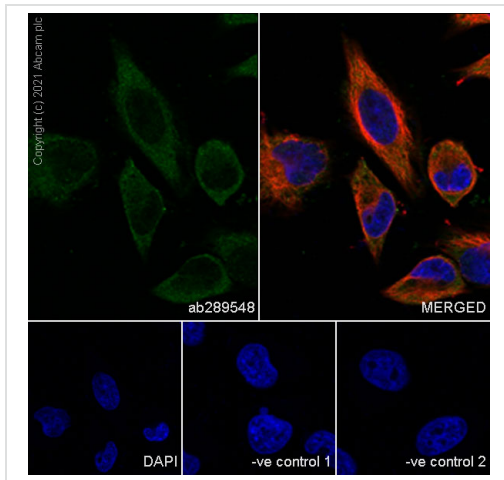
**Predicted band size:** 45 kDa

**Observed band size:** 110 kDa

Blocking and diluting buffer and concentration: 5% NFD/MTBST

The molecular weight observed is consistent with what has been described in the literature (PMID: 27061067, 15111122).

Exposure time: 3 seconds

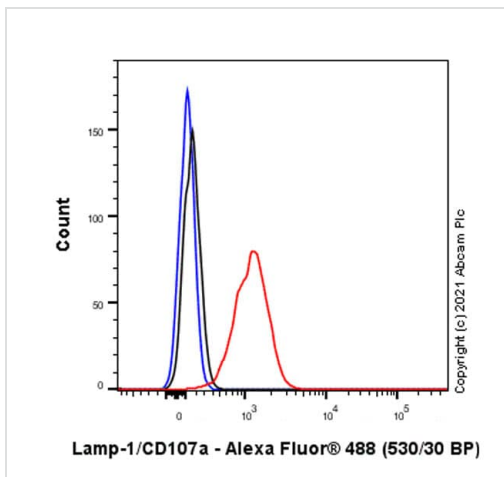


Immunocytochemistry/ Immunofluorescence - Anti-LAMP1 antibody [25/Lamp-1] (ab289548)

Immunofluorescent analysis of 4% Paraformaldehyde-fixed, 0.1% Triton X-100 permeabilized HeLa cells labelling LAMP1 with ab289548 at 1/100 (10 µg/ml) dilution, followed by **ab150117** Goat Anti-Mouse IgG H&L (Alexa Fluor® 488) preadsorbed antibody at 1/1000 dilution (Green). Confocal image shows cytoplasmic staining in HeLa cell line. **ab179513** Anti-beta Tubulin rabbit monoclonal antibody was used to counterstain tubulin at 1/200 dilution followed by **ab150080** Goat Anti-Rabbit IgG H&L (Alexa Fluor® 594) at a 1/500 dilution (Red). The nuclear counterstain was DAPI (Blue).

**Negative control 1:** ab289548 at 1/100 dilution followed by **ab150080** Goat Anti-Rabbit IgG H&L (Alexa Fluor® 594) at 1/500 dilution.

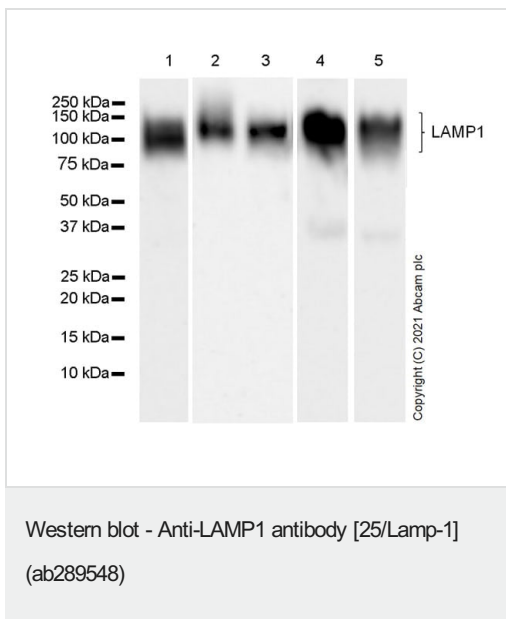
**Negative control 2:** **ab179513** Anti-beta Tubulin rabbit monoclonal antibody at a 1/1000 dilution followed by **ab150117** Goat Anti-Mouse IgG H&L (Alexa Fluor® 488) preadsorbed at 1/1000 dilution.



Flow Cytometry (Intracellular) - Anti-LAMP1 antibody [25/Lamp-1] (ab289548)

Flow cytometric analysis of 4% paraformaldehyde fixed 90% methanol permeabilized HeLa (Human cervix adenocarcinoma epithelial cell) cells labelling LAMP1 with ab289548 at 1/1000 dilution (0.1 µg) (Red) compared with a Mouse monoclonal IgG (Black) isotype control and an unlabelled control (cells without incubation with primary antibody and secondary antibody) (Blue).

Goat anti-Mouse IgG (Alexa Fluor® 488, **ab150113**) at 1/5000 dilution was used as the secondary antibody.



**All lanes** : Anti-LAMP1 antibody [25/Lamp-1] (ab289548) at 1/1000 dilution

**Lane 1** : Human kidney tissue lysate

**Lane 2** : Human spleen tissue lysate

**Lane 3** : Human colon cancer tissue lysate

**Lane 4** : HeLa (human epithelial cell line from cervix adenocarcinoma), whole cell lysate

**Lane 5** : MCF7 (human breast adenocarcinoma epithelial cell), whole cell lysate

Lysates/proteins at 20 µg per lane.

### Secondary

**All lanes** : Peroxidase-Conjugated Goat anti-Mouse IgG (H+L) at 1/10000 dilution

**Predicted band size:** 45 kDa





**Observed band size:** 110 kDa

Blocking and diluting buffer and concentration: 5% NFDm/TBST

The molecular weight observed is consistent with what has been described in the literature (PMID: 27061067, 15111122).

Exposure time: Lane 1, 4, 5: 26 seconds ; Lane 2, 3 : 70 seconds

Why choose a recombinant antibody?

 <p><b>Research with confidence</b> Consistent and reproducible results</p>	 <p><b>Long-term and scalable supply</b> Recombinant technology</p>
 <p><b>Success from the first experiment</b> Confirmed specificity</p>	 <p><b>Ethical standards compliant</b> Animal-free production</p>

Anti-LAMP1 antibody [25/Lamp-1] (ab289548)

**Please note:** All products are "FOR RESEARCH USE ONLY. NOT FOR USE IN DIAGNOSTIC PROCEDURES"

### Our Abpromise to you: Quality guaranteed and expert technical support

---

- Replacement or refund for products not performing as stated on the datasheet
- Valid for 12 months from date of delivery
- Response to your inquiry within 24 hours
- We provide support in Chinese, English, French, German, Japanese and Spanish
- Extensive multi-media technical resources to help you
- We investigate all quality concerns to ensure our products perform to the highest standards

If the product does not perform as described on this datasheet, we will offer a refund or replacement. For full details of the Abpromise, please visit <https://www.abcam.cn/abpromise> or contact our technical team.

### Terms and conditions

---

- Guarantee only valid for products bought direct from Abcam or one of our authorized distributors