

Anti-Laminin gamma 1 antibody [EPR21199] ab233389

重组 RabMAb

★★★★☆ **1 Abreviews** **4 References** **8 图像**

概述

产品名称	Anti-Laminin gamma 1 抗体[EPR21199]
描述	兔单克隆抗体[EPR21199] to Laminin gamma 1
宿主	Rabbit
经测试应用	适用于: WB, IHC-P, IP, Flow Cyt (Intra)
种属反应性	与反应: Mouse, Rat, Human
免疫原	Recombinant fragment. This information is proprietary to Abcam and/or its suppliers.
阳性对照	WB: A431, NIH:OVCAR-3, HeLa, MCF7, C6, PC-12 and A549 whole cell lysates; Human fetal heart and fetal kidney tissue lysates; rat kidney, brain and spleen tissue lysates; mouse brain tissue lysate. IP: A431 whole cell lysate. IHC-P: Human pancreas tissue; mouse kidney tissue; rat stomach tissue. Flow Cyt (intra): A431 cells.
常规说明	<p>This product is a recombinant monoclonal antibody, which offers several advantages including:</p> <ul style="list-style-type: none"> - High batch-to-batch consistency and reproducibility - Improved sensitivity and specificity - Long-term security of supply - Animal-free production <p>For more information see here.</p> <p>Our RabMAb[®] technology is a patented hybridoma-based technology for making rabbit monoclonal antibodies. For details on our patents, please refer to RabMAb[®] patents.</p>

性能

形式	Liquid
存放说明	Shipped at 4°C. Store at +4°C short term (1-2 weeks). Upon delivery aliquot. Store at -20°C long term. Avoid freeze / thaw cycle.
存储溶液	pH: 7.2 Preservative: 0.01% Sodium azide Constituents: PBS, 40% Glycerol (glycerin, glycerine), 0.05% BSA
纯度	Protein A purified
克隆	单克隆
克隆编号	EPR21199

应用

The Abpromise guarantee

Abpromise™承诺保证使用ab233389于以下的经测试应用

“应用说明”部分 下显示的仅为推荐的起始稀释度;实际最佳的稀释度/浓度应由使用者检定。

应用	Ab评论	说明
WB		1/1000. Detects a band of approximately 210-250 kDa (predicted molecular weight: 178 kDa).
IHC-P	★★★★★ (1)	1/2000. Perform heat mediated antigen retrieval with Tris/EDTA buffer pH 9.0 before commencing with IHC staining protocol.
IP		1/30.
Flow Cyt (Intra)		1/50.

靶标

功能

Binding to cells via a high affinity receptor, laminin is thought to mediate the attachment, migration and organization of cells into tissues during embryonic development by interacting with other extracellular matrix components.

组织特异性

Found in the basement membranes (major component).

序列相似性

Contains 11 laminin EGF-like domains.
Contains 1 laminin IV type A domain.
Contains 1 laminin N-terminal domain.

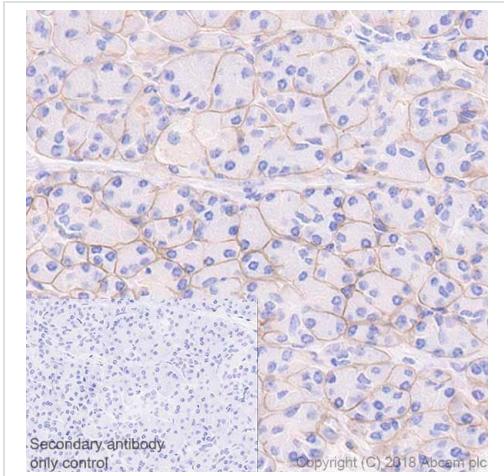
结构域

The alpha-helical domains I and II are thought to interact with other laminin chains to form a coiled coil structure.
Domains VI and IV are globular.

细胞定位

Secreted > extracellular space > extracellular matrix > basement membrane.

图片

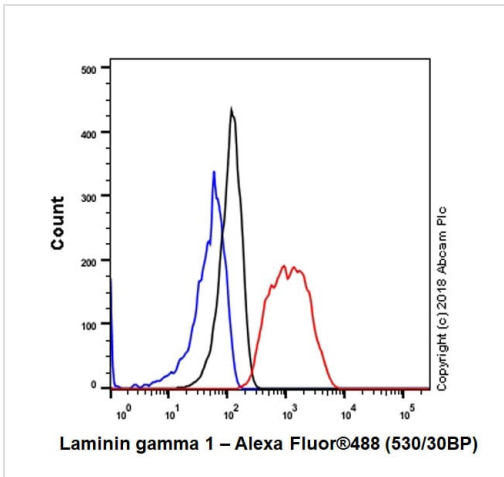


Immunohistochemistry (Formalin/PFA-fixed paraffin-embedded sections) - Anti-Laminin gamma 1 antibody [EPR21199] (ab233389)

Immunohistochemical analysis of paraffin-embedded human pancreas tissue labeling Laminin gamma 1 with ab233389 at 1/2000 dilution, followed by Goat Anti-Rabbit IgG H&L (HRP) ready to use. Positive staining in basement membrane of human pancreas (PMID: 15159456) is observed. Counter stained with Hematoxylin.

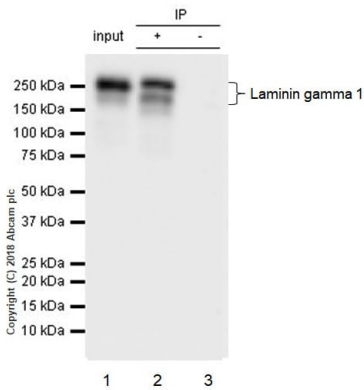
Secondary antibody only control: Used PBS instead of primary antibody, secondary antibody is Goat Anti-Rabbit IgG H&L (HRP) ready to use.

Perform heat-mediated antigen retrieval using **ab93684** (Tris/EDTA buffer, pH 9.0).



Flow Cytometry (Intracellular) - Anti-Laminin gamma 1 antibody [EPR21199] (ab233389)

Intracellular flow cytometric analysis of 4% paraformaldehyde-fixed, 90% methanol-permeabilized A431 (human epidermoid carcinoma cell line) cell line labeling Laminin gamma 1 with ab233389 at 1/50 (red) compared with Rabbit monoclonal IgG Isotype control (**ab172730**) (black) and an unlabeled control (cells without incubation with primary antibody and secondary antibody) (blue). Goat Anti-Rabbit IgG H&L (Alexa Fluor[®] 488) (**ab150077**), at 1/2000 dilution was used as the secondary antibody.



Immunoprecipitation - Anti-Laminin gamma 1 antibody [EPR21199] (ab233389)

Laminin gamma 1 was immunoprecipitated from 0.35 mg of A431 (human epidermoid carcinoma cell line) whole cell lysate with ab233389 at 1/30 dilution. Western blot was performed from the immunoprecipitate using ab233389 at 1/1000 dilution. VeriBlot for IP Detection Reagent (HRP) ([ab131366](#)), was used for detection at 1/5000 dilution.

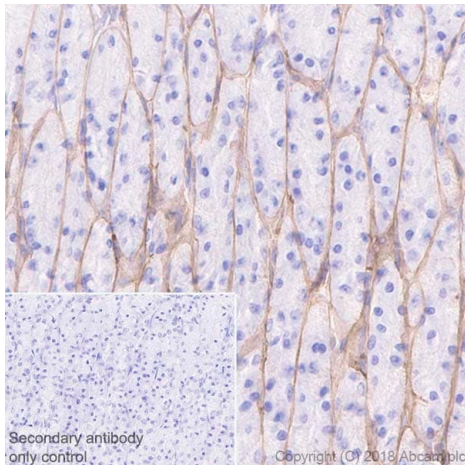
Lane 1: A431 whole lysate 10 µg (Input).

Lane 2: ab233389 IP in A431 whole cell lysate.

Lane 3: Rabbit monoclonal IgG ([ab172730](#)) instead of ab233389 in A431 whole cell lysate.

Blocking and dilution buffer and concentration: 5% NFDm/TBST.

Exposure time: 15 seconds.

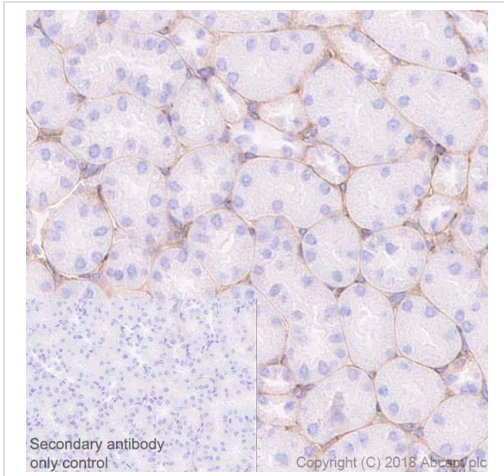


Immunohistochemistry (Formalin/PFA-fixed paraffin-embedded sections) - Anti-Laminin gamma 1 antibody [EPR21199] (ab233389)

Immunohistochemical analysis of paraffin-embedded rat stomach tissue labeling Laminin gamma 1 with ab233389 at 1/2000 dilution, followed by Goat Anti-Rabbit IgG H&L (HRP) ready to use. Positive staining in basement membrane of rat stomach (PMID: 12571278) is observed. Counter stained with Hematoxylin.

Secondary antibody only control: Used PBS instead of primary antibody, secondary antibody is Goat Anti-Rabbit IgG H&L (HRP) ready to use.

Perform heat-mediated antigen retrieval using [ab93684](#) (Tris/EDTA buffer, pH 9.0).

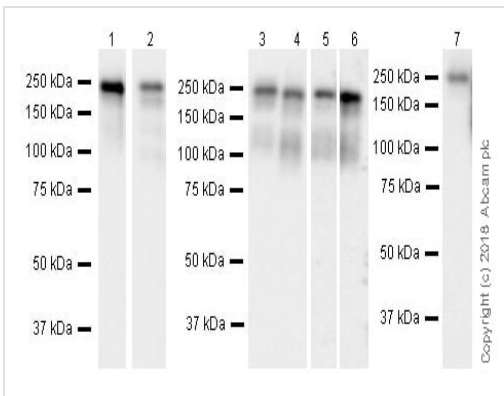


Immunohistochemistry (Formalin/PFA-fixed paraffin-embedded sections) - Anti-Laminin gamma 1 antibody [EPR21199] (ab233389)

Immunohistochemical analysis of paraffin-embedded mouse kidney tissue labeling Laminin gamma 1 with ab233389 at 1/2000 dilution, followed by Goat Anti-Rabbit IgG H&L (HRP) ready to use. Positive staining in the basement membrane of mouse kidney (PMID: 21903675) is observed. Counter stained with Hematoxylin.

Secondary antibody only control: Used PBS instead of primary antibody, secondary antibody is Goat Anti-Rabbit IgG H&L (HRP) ready to use.

Perform heat-mediated antigen retrieval using [ab93684](#) (Tris/EDTA buffer, pH 9.0).



Western blot - Anti-Laminin gamma 1 antibody [EPR21199] (ab233389)

All lanes : Anti-Laminin gamma 1 antibody [EPR21199] (ab233389) at 1/5000 dilution

Lane 1 : C6 (rat glial tumor glial cell line) whole cell lysate at 10 µg

Lane 2 : PC-12 (rat adrenal gland pheochromocytoma cell line) whole cell lysate at 20 µg

Lane 3 : Rat heart lysate at 10 µg

Lane 4 : Rat kidney lysate at 10 µg

Lane 5 : Rat brain lysate at 10 µg

Lane 6 : Rat spleen lysate at 10 µg

Lane 7 : Mouse brain lysate at 10 µg

Secondary

All lanes : Goat Anti-Rabbit IgG H&L (HRP) ([ab97051](#)) at 1/100000 dilution

Predicted band size: 178 kDa

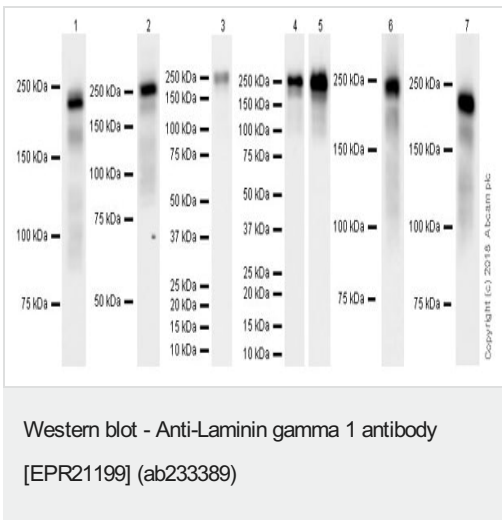
Observed band size: 210-250 kDa

Blocking/Dilution buffer: 5% NFDM/TBST.

Exposure times.

Lane 1: 70 seconds. Lane 2: 15 seconds. Lanes 3 & 4: 10 seconds. Lanes 5 & 6: 3 minutes. Lane 7: 48 seconds.

The expression profile observed is consistent with what has been described in the literature (PMID: 18263645, 11067943, 23857767, 28928891).



Lanes 1-3 & 6-7 : Anti-Laminin gamma 1 antibody [EPR21199] (ab233389) at 1/5000 dilution

Lanes 4-5 : Anti-Laminin gamma 1 antibody [EPR21199] (ab233389) at 1/1000 dilution

Lane 1 : A431 (human epidermoid carcinoma cell line) whole cell lysate

Lane 2 : NIH:OVCAR-3 (human ovary adenocarcinoma cell line) whole cell lysate

Lane 3 : HeLa (human epithelial cell line from cervix adenocarcinoma) whole cell lysate

Lane 4 : MCF7 (human breast adenocarcinoma cell line) whole cell lysate

Lane 5 : A549 (human lung carcinoma cell line) whole cell lysate

Lane 6 : Human fetal heart lysate

Lane 7 : Human fetal kidney lysate

Lysates/proteins at 10 µg per lane.

Secondary

Lanes 1-5 : Goat Anti-Rabbit IgG H&L (HRP) (**ab97051**) at 1/100000 dilution

Lanes 6-7 : VeriBlot for IP Detection Reagent (HRP) (**ab131366**) at 1/4000 dilution

Predicted band size: 178 kDa

Observed band size: 210-250 kDa

Blocking/Dilution buffer: 5% NFDM/TBST.

Exposure times.

Lanes 1, 2 & 7: 15 seconds. Lane 3: 8 seconds. Lanes 4: 37 seconds. Lanes 5 & 6: 10 seconds.

The expression profile observed is consistent with what has been described in the literature (PMID: 18263645, 11067943, 23857767, 28928891).

Why choose a recombinant antibody?

Research with confidence
Consistent and reproducible results

Long-term and scalable supply
Recombinant technology

Success from the first experiment
Confirmed specificity

Ethical standards compliant
Animal-free production

Anti-Laminin gamma 1 antibody [EPR21199]
(ab233389)

Please note: All products are "FOR RESEARCH USE ONLY. NOT FOR USE IN DIAGNOSTIC PROCEDURES"

Our Abpromise to you: Quality guaranteed and expert technical support

- Replacement or refund for products not performing as stated on the datasheet
- Valid for 12 months from date of delivery
- Response to your inquiry within 24 hours
- We provide support in Chinese, English, French, German, Japanese and Spanish
- Extensive multi-media technical resources to help you
- We investigate all quality concerns to ensure our products perform to the highest standards

If the product does not perform as described on this datasheet, we will offer a refund or replacement. For full details of the Abpromise, please visit <https://www.abcam.cn/abpromise> or contact our technical team.

Terms and conditions

- Guarantee only valid for products bought direct from Abcam or one of our authorized distributors