

Anti-Laminin beta 1 antibody ab69633

2 References **3 图像**

概述

产品名称	Anti-Laminin beta 1抗体
描述	兔多克隆抗体to Laminin beta 1
宿主	Rabbit
经测试应用	适用于: WB, IHC-P, ICC/IF
种属反应性	与反应: Human 预测可用于: Mouse 
免疫原	Synthesized peptide derived from the C-terminus of human Laminin beta 1.
阳性对照	Hela cells, human liver carcinoma tissue and extracts from HepG2
常规说明	<p>The Life Science industry has been in the grips of a reproducibility crisis for a number of years. Abcam is leading the way in addressing this with our range of recombinant monoclonal antibodies and knockout edited cell lines for gold-standard validation. Please check that this product meets your needs before purchasing.</p> <p>If you have any questions, special requirements or concerns, please send us an inquiry and/or contact our Support team ahead of purchase. Recommended alternatives for this product can be found below, along with publications, customer reviews and Q&As</p>

性能

形式	Liquid
存放说明	Shipped at 4°C. Upon delivery aliquot and store at -20°C. Avoid freeze / thaw cycles.
存储溶液	<p>pH: 7.40</p> <p>Preservative: 0.02% Sodium azide</p> <p>Constituents: 50% Glycerol (glycerin, glycerine), 0.87% Sodium chloride, PBS</p>
纯度	Without Mg2+ and Ca2+
克隆	Immunogen affinity purified
同种型	多克隆
	IgG

应用

The Abpromise guarantee

Abpromise™ 承诺保证使用ab69633于以下的经测试应用

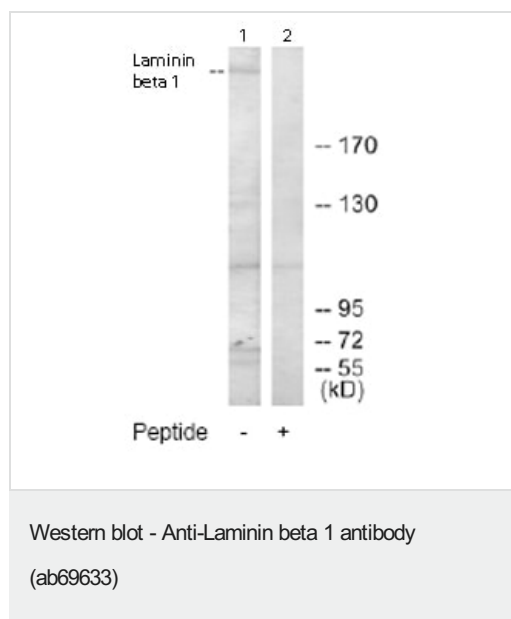
“应用说明”部分 下显示的仅为推荐的起始稀释度;实际最佳的稀释度/浓度应由使用者检定。

应用	Ab评论	说明
WB		1/500 - 1/1000. Detects a band of approximately 60, 67, 110, 130, >170 kDa (predicted molecular weight: 198 kDa).
IHC-P		1/50 - 1/100.
ICC/IF		1/500 - 1/1000.

靶标

功能	Binding to cells via a high affinity receptor, laminin is thought to mediate the attachment, migration and organization of cells into tissues during embryonic development by interacting with other extracellular matrix components.
序列相似性	Contains 13 laminin EGF-like domains. Contains 1 laminin IV type B domain. Contains 1 laminin N-terminal domain.
结构域	The alpha-helical domains I and II are thought to interact with other laminin chains to form a coiled coil structure. Domains VI and IV are globular.
细胞定位	Secreted > extracellular space > extracellular matrix > basement membrane. Major component.

图片



All lanes : Anti-Laminin beta 1 antibody (ab69633) at 1/500 dilution

Lane 1 : Extracts from HepG2 cells

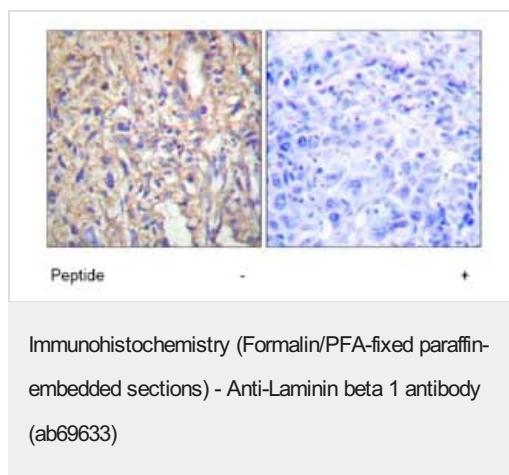
Lane 2 : Extracts from HepG2 cells with immunising peptide at 5 µg

Lysates/proteins at 5 µg per lane.

Predicted band size: 198 kDa

Observed band size: >170 kDa

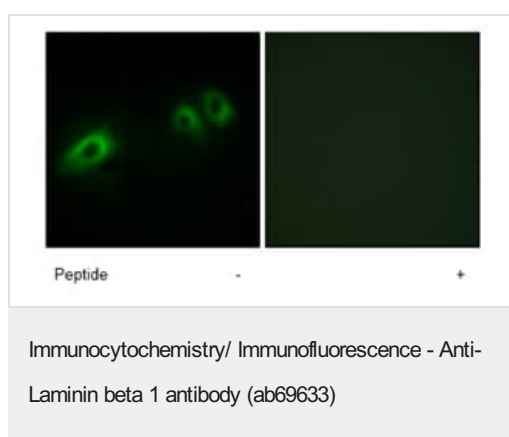
Additional bands at: 110 kDa, 130 kDa, 60 kDa, 67 kDa. We are unsure as to the identity of these extra bands.



Immunohistochemistry analysis of paraffin-embedded human liver carcinoma tissue using ab69633 at 1:50 dilution.

Left image un-treated.

Right image treated with immunizing peptide.



Immunofluorescence analysis of HeLa cells using ab69633 at a 1:500 dilution.

Left image un-treated.

Right image treated with immunizing peptide.

Please note: All products are "FOR RESEARCH USE ONLY. NOT FOR USE IN DIAGNOSTIC PROCEDURES"

Our Abpromise to you: Quality guaranteed and expert technical support

- Replacement or refund for products not performing as stated on the datasheet
- Valid for 12 months from date of delivery
- Response to your inquiry within 24 hours
- We provide support in Chinese, English, French, German, Japanese and Spanish
- Extensive multi-media technical resources to help you
- We investigate all quality concerns to ensure our products perform to the highest standards

If the product does not perform as described on this datasheet, we will offer a refund or replacement. For full details of the Abpromise, please visit <https://www.abcam.cn/abpromise> or contact our technical team.

Terms and conditions

- Guarantee only valid for products bought direct from Abcam or one of our authorized distributors