

### Anti-Lamin B2 antibody [EPR9701(B)] ab151735

**重组 RabMAb**

★★★★☆ **2 Abreviews** **33 References** **11 图像**

#### 概述

<b>产品名称</b>	Anti-Lamin B2抗体[EPR9701(B)]
<b>描述</b>	兔单克隆抗体[EPR9701(B)] to Lamin B2
<b>宿主</b>	Rabbit
<b>经测试应用</b>	<b>适用于:</b> Flow Cyt (Intra), WB, IHC-P, IP, ICC/IF
<b>种属反应性</b>	<b>与反应:</b> Mouse, Rat, Human
<b>免疫原</b>	Synthetic peptide within Human Lamin B2 aa 550 to the C-terminus (C terminal). The exact sequence is proprietary. Database link: <a href="#">Q03252</a>
<b>阳性对照</b>	IP: HepG2 cell lysate; IHC: Human bladder cancer tissue; Mouse and rat testis; mouse kidney and cerebrum. ICC/IF: HepG2 cells; WB: HepG2 and HeLa cells, Mouse and rat testis and rat spleen lysates. Flow Cyt (intra): HepG2 cells.
<b>常规说明</b>	This product is a recombinant monoclonal antibody, which offers several advantages including: <ul style="list-style-type: none"> <li>- High batch-to-batch consistency and reproducibility</li> <li>- Improved sensitivity and specificity</li> <li>- Long-term security of supply</li> <li>- Animal-free production</li> </ul> For more information <a href="#">see here</a> . Our RabMAb <sup>®</sup> technology is a patented hybridoma-based technology for making rabbit monoclonal antibodies. For details on our patents, please refer to <a href="#">RabMAb<sup>®</sup> patents</a> .

#### 性能

<b>形式</b>	Liquid
<b>存放说明</b>	Shipped at 4°C. Store at +4°C short term (1-2 weeks). Upon delivery aliquot. Store at -20°C long term. Avoid freeze / thaw cycle.
<b>存储溶液</b>	pH: 7.20 Preservative: 0.01% Sodium azide Constituents: 59% PBS, 40% Glycerol (glycerin, glycerine), 0.05% BSA
<b>纯度</b>	Protein A purified
<b>克隆</b>	单克隆

克隆编号                          EPR9701(B)  
同种型                                  IgG

应用

**The Abpromise guarantee              Abpromise™承诺保证使用ab151735于以下的经测试应用**

“应用说明”部分下显示的仅为推荐的起始稀释度;实际最佳的稀释度/浓度应由使用者检定。

应用	Ab评论	说明
Flow Cyt (Intra)		1/20.
WB		1/2000. Predicted molecular weight: 68 kDa. <b>For unpurified use at 1/1000 - 1/10000.</b>
IHC-P		1/100. Perform heat mediated antigen retrieval before commencing with IHC staining protocol. See <b>IHC antigen retrieval protocols.</b>  <b>For unpurified use at 1/50 - 1/100.</b>  The human and rat recommendation is based on the WB results. We do not guarantee IHC-P for human and rat.
IP		1/10 - 1/100.
ICC/IF	★★★★☆ (2)	1/50. <b>For unpurified use at 1/250 - 1/500.</b>

靶标

**功能** Lamins are components of the nuclear lamina, a fibrous layer on the nucleoplasmic side of the inner nuclear membrane, which is thought to provide a framework for the nuclear envelope and may also interact with chromatin.

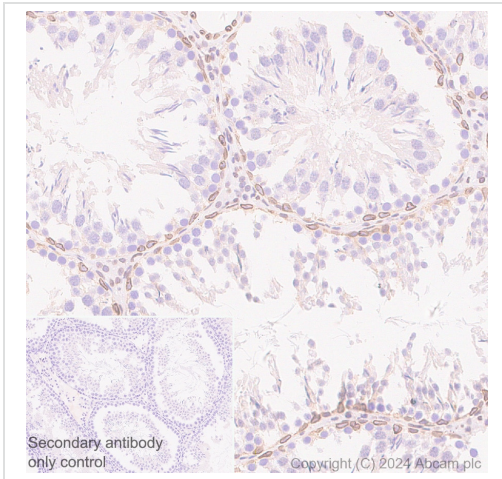
**疾病相关** Defects in LMNB2 are a cause of partial acquired lipodystrophy (APLD) [MIM:608709]. A rare childhood disease characterized by loss of subcutaneous fat from the face and trunk. Fat deposition on the pelvic girdle and lower limbs is normal or excessive. Most frequently, onset between 5 and 15 years of age. Most affected subjects are females and some show no other abnormality, but many develop glomerulonephritis, diabetes mellitus, hyperlipidemia, and complement deficiency. Mental retardation in some cases. APLD is a sporadic disorder of unknown etiology.

**序列相似性** Belongs to the intermediate filament family.

**翻译后修饰** B-type lamins undergo a series of modifications, such as farnesylation and phosphorylation. Increased phosphorylation of the lamins occurs before envelope disintegration and probably plays a role in regulating lamin associations.

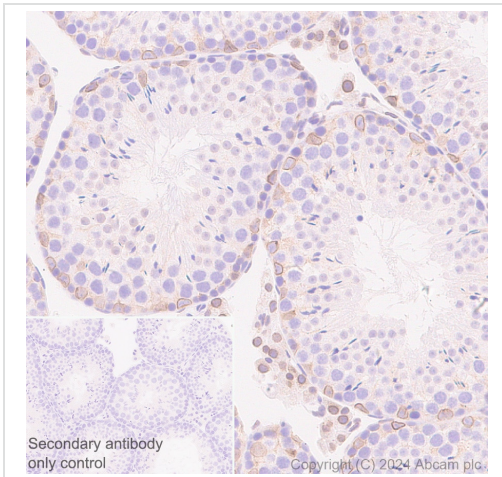
**细胞定位** Nucleus inner membrane.

图片



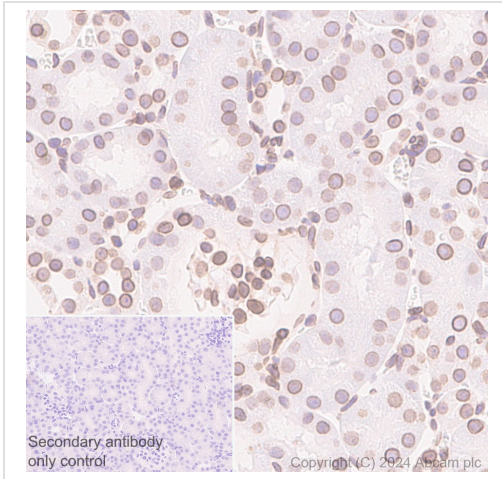
Immunohistochemistry (Formalin/PFA-fixed paraffin-embedded sections) - Anti-Lamin B2 antibody [EPR9701(B)] (ab151735)

Immunohistochemistry (Formalin/PFA-fixed paraffin-embedded sections) analysis of rat testis tissues labelling Lamin B2 with ab151735 at 1:2000 dilution and ready to use secondary LeicaDS9800 (Bond™ Polymer Refine Detection) counterstained with Hematoxylin. Heat mediated antigen retrieval was performed with Citrate buffer (pH 6.0, Epitope Retrieval Solution 1) for 20 mins. Nuclear envelope staining on rat testis. The section was incubated with ab151735 for 30 mins at room temperature. The immunostaining was performed on a Leica Biosystems BOND® RX instrument



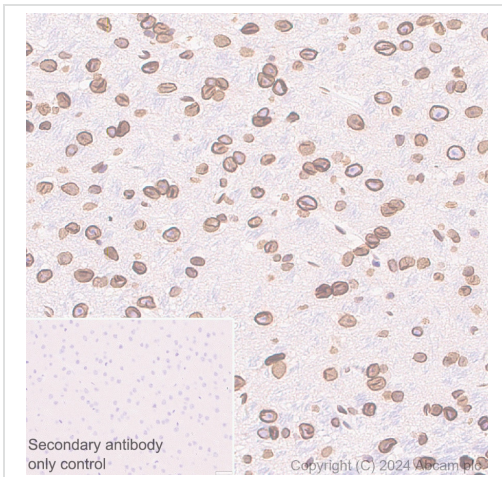
Immunohistochemistry (Formalin/PFA-fixed paraffin-embedded sections) - Anti-Lamin B2 antibody [EPR9701(B)] (ab151735)

Immunohistochemistry (Formalin/PFA-fixed paraffin-embedded sections) analysis of mouse testis tissues labelling Lamin B2 with ab151735 at 1:2000 dilution and ready to use secondary LeicaDS9800 (Bond™ Polymer Refine Detection) counterstained with Hematoxylin. Heat mediated antigen retrieval was performed with Citrate buffer (pH 6.0, Epitope Retrieval Solution 1) for 20 mins. Nuclear envelope staining on mouse testis. The section was incubated with ab151735 for 30 mins at room temperature. The immunostaining was performed on a Leica Biosystems BOND® RX instrument



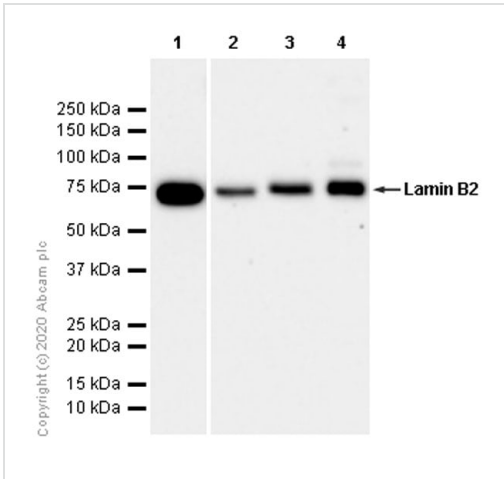
Immunohistochemistry (Formalin/PFA-fixed paraffin-embedded sections) - Anti-Lamin B2 antibody [EPR9701(B)] (ab151735)

Immunohistochemistry (Formalin/PFA-fixed paraffin-embedded sections) analysis of mouse kidney tissues labelling Lamin B2 with ab151735 at 1:2000 dilution and ready to use secondary LeicaDS9800 (Bond™ Polymer Refine Detection) counterstained with Hematoxylin. Heat mediated antigen retrieval was performed with Citrate buffer (pH 6.0, Epitope Retrieval Solution 1) for 20 mins. Nuclear envelope staining on mouse kidney. The section was incubated with ab151735 for 30 mins at room temperature. The immunostaining was performed on a Leica Biosystems BOND® RX instrument



Immunohistochemistry (Formalin/PFA-fixed paraffin-embedded sections) - Anti-Lamin B2 antibody [EPR9701(B)] (ab151735)

Immunohistochemistry (Formalin/PFA-fixed paraffin-embedded sections) analysis of mouse cerebrum tissues labelling Lamin B2 with ab151735 at 1:2000 dilution and ready to use secondary LeicaDS9800 (Bond™ Polymer Refine Detection) counterstained with Hematoxylin. Heat mediated antigen retrieval was performed with Citrate buffer (pH 6.0, Epitope Retrieval Solution 1) for 20 mins. Nuclear envelope staining on mouse cerebrum. The section was incubated with ab151735 for 30 mins at room temperature. The immunostaining was performed on a Leica Biosystems BOND® RX instrument



Western blot - Anti-Lamin B2 antibody  
[EPR9701(B)] (ab151735)

**All lanes :** Anti-Lamin B2 antibody [EPR9701(B)] (ab151735) at 1/2000 dilution (Purified)

**Lane 1 :** HeLa (Human cervix adenocarcinoma epithelial cell) whole cell lysate

**Lane 2 :** Mouse testis lysate

**Lane 3 :** Rat spleen lysate

**Lane 4 :** Rat testis lysate

Lysates/proteins at 20 µg per lane.

### Secondary

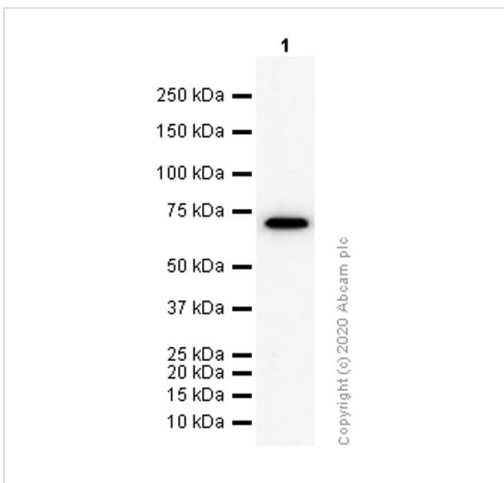
**All lanes :** Goat Anti-Rabbit IgG H&L (HRP) ([ab97051](#)) at 1/20000 dilution

**Predicted band size:** 68 kDa

**Observed band size:** 68 kDa

Blocking Buffer and concentration: 5% NFDm/TBST

Anti-Lamin B2 antibody [EPR9701(B)] (ab151735) at 1/2000 dilution (Purified) + HepG2 (Human hepatocellular carcinoma epithelial cell) whole cell lysate at 15 µg



Western blot - Anti-Lamin B2 antibody  
[EPR9701(B)] (ab151735)

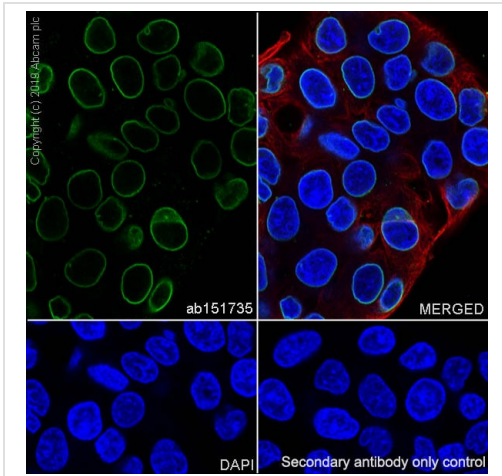
### Secondary

Goat Anti-Rabbit IgG H&L (HRP) ([ab97051](#)) at 1/20000 dilution

**Predicted band size:** 68 kDa

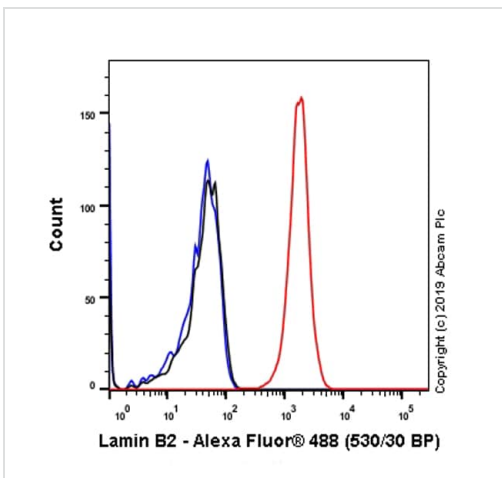
**Observed band size:** 68 kDa

Blocking Buffer and concentration: 5% NFDm/TBST



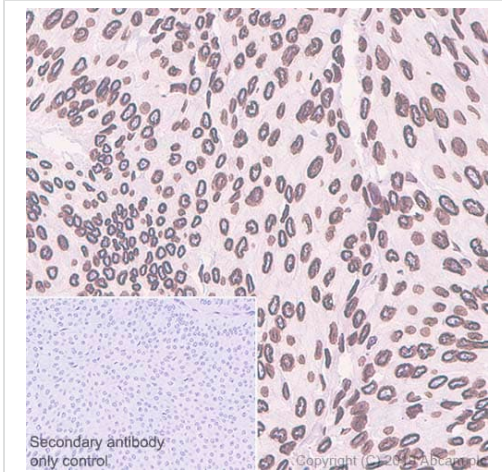
Immunocytochemistry/ Immunofluorescence - Anti-Lamin B2 antibody [EPR9701(B)] (ab151735)

Immunocytochemistry analysis of HepG2 (Human hepatocellular carcinoma epithelial cell) cells labeling Lamin B2 with Purified ab151735 at 1:50 dilution (2.18 µg/ml). Cells were fixed in 4% Paraformaldehyde and permeabilized with 0.1% tritonX-100. Cells were counterstained with Ab195889 Anti-alpha Tubulin antibody [DM1A] - Microtubule Marker (Alexa Fluor®594) 1:200 (2.5 µg/ml). Goat anti rabbit IgG (Alexa Fluor® 488, **ab150077**) was used as the secondary antibody at 1:1000 (2 µg/ml) dilution. DAPI (blue) was used as nuclear counterstain. PBS instead of the primary antibody was used as the secondary antibody only control.



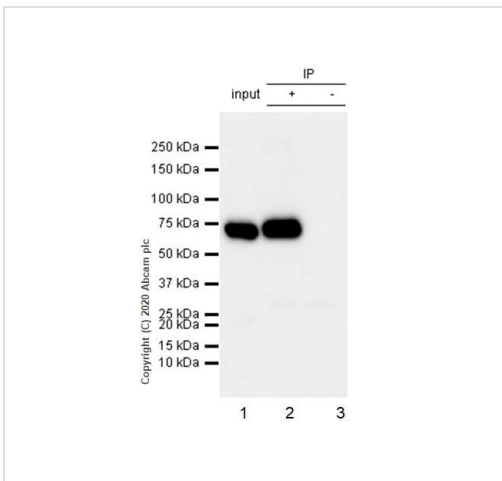
Flow Cytometry (Intracellular) - Anti-Lamin B2 antibody [EPR9701(B)] (ab151735)

Intracellular Flow Cytometry analysis of HepG2 (Human hepatocellular carcinoma epithelial cell) cells labeling Lamin B2 with Purified ab151735 at 1/20 dilution (10 µg/ml) (Red). Cells were fixed with 4% Paraformaldehyde and permeabilised with 90% Methanol. A Goat anti rabbit IgG (Alexa Fluor® 488, **ab150077**) secondary antibody was used at 1/2000. Isotype control - Rabbit monoclonal IgG (Black). Unlabeled control - Cell without incubation with primary antibody and secondary antibody (Blue).



Immunohistochemistry (Formalin/PFA-fixed paraffin-embedded sections) - Anti-Lamin B2 antibody [EPR9701(B)] (ab151735)





Immunohistochemistry (Formalin/PFA-fixed paraffin-embedded sections) analysis of human bladder cancer tissue sections labeling Lamin B2 with Purified ab151735 at 1:100 dilution (1.09 µg/ml). Perform heat mediated antigen retrieval using **ab93684** (Tris/EDTA buffer, pH 9.0). ImmunoHistoProbe one step HRP Polymer (ready to use) was used as the secondary antibody. Negative control: PBS instead of the primary antibody. Hematoxylin was used as a counterstain.



Immunoprecipitation - Anti-Lamin B2 antibody [EPR9701(B)] (ab151735)

Purified ab151735 at 1/20 dilution (0.5µg) immunoprecipitating Lamin B2 in HepG2 whole cell lysate.  
 Lane 1 (input): HepG2 (Human hepatocellular carcinoma epithelial cell) whole cell lysate 10µg  
 Lane 2 (+): ab151735 + HepG2 whole cell lysate.  
 Lane 3 (-): Rabbit monoclonal IgG (**ab172730**) instead of ab151735 in HepG2 whole cell lysate.  
 VeriBlot for IP Detection Reagent (HRP) (**ab131366**) (1/1000 dilution) was used for Western blotting.  
 Blocking Buffer and concentration: 5% NFDm/TBST.  
 Diluting buffer and concentration: 5% NFDm/TBST.  
 Observed band size: 68 kDa

Why choose a recombinant antibody?

 <p><b>Research with confidence</b> Consistent and reproducible results</p>	 <p><b>Long-term and scalable supply</b> Recombinant technology</p>
 <p><b>Success from the first experiment</b> Confirmed specificity</p>	 <p><b>Ethical standards compliant</b> Animal-free production</p>

Anti-Lamin B2 antibody [EPR9701(B)] (ab151735)

**Please note:** All products are "FOR RESEARCH USE ONLY. NOT FOR USE IN DIAGNOSTIC PROCEDURES"

### Our Abpromise to you: Quality guaranteed and expert technical support

---

- Replacement or refund for products not performing as stated on the datasheet
- Valid for 12 months from date of delivery
- Response to your inquiry within 24 hours
- We provide support in Chinese, English, French, German, Japanese and Spanish
- Extensive multi-media technical resources to help you
- We investigate all quality concerns to ensure our products perform to the highest standards

If the product does not perform as described on this datasheet, we will offer a refund or replacement. For full details of the Abpromise, please visit <https://www.abcam.cn/abpromise> or contact our technical team.

### Terms and conditions

---

- Guarantee only valid for products bought direct from Abcam or one of our authorized distributors