

Anti-Lamin B2 antibody ab155319

2 References **3 图像**

概述

产品名称	Anti-Lamin B2抗体
描述	兔多克隆抗体to Lamin B2
宿主	Rabbit
经测试应用	适用于: WB, IHC-P, ICC/IF
种属反应性	与反应: Human
免疫原	Recombinant protein fragment contain a sequence corresponding to a region within amino acids 277 - 560 of Human Lamin B2.
阳性对照	U87-MG cell lysate; HeLa cells; Human OVCA tissue.
常规说明	<p>The Life Science industry has been in the grips of a reproducibility crisis for a number of years. Abcam is leading the way in addressing this with our range of recombinant monoclonal antibodies and knockout edited cell lines for gold-standard validation. Please check that this product meets your needs before purchasing.</p> <p>If you have any questions, special requirements or concerns, please send us an inquiry and/or contact our Support team ahead of purchase. Recommended alternatives for this product can be found below, along with publications, customer reviews and Q&As</p>

性能

形式	Liquid
存放说明	Shipped at 4°C. Upon delivery aliquot. Store at -20°C or -80°C. Avoid freeze / thaw cycle.
存储溶液	<p>pH: 7.00</p> <p>Preservative: 0.01% Thimerosal (merthiolate)</p> <p>Constituents: 78.99% PBS, 1% BSA, 20% Glycerol (glycerin, glycerine)</p>
纯度	Immunogen affinity purified
克隆	多克隆
同种型	IgG

应用

The Abpromise guarantee

Abpromise™ 承诺保证使用ab155319于以下的经测试应用

“应用说明”部分 下显示的仅为推荐的起始稀释度;实际最佳的稀释度/浓度应由使用者检定。

应用	Ab评论	说明
WB		1/5000 - 1/20000. Predicted molecular weight: 68 kDa.
IHC-P		1/100 - 1/1000.
ICC/IF		1/100 - 1/1000.

靶标

功能

Lamins are components of the nuclear lamina, a fibrous layer on the nucleoplasmic side of the inner nuclear membrane, which is thought to provide a framework for the nuclear envelope and may also interact with chromatin.

疾病相关

Defects in LMNB2 are a cause of partial acquired lipodystrophy (APLD) [MIM:608709]. A rare childhood disease characterized by loss of subcutaneous fat from the face and trunk. Fat deposition on the pelvic girdle and lower limbs is normal or excessive. Most frequently, onset between 5 and 15 years of age. Most affected subjects are females and some show no other abnormality, but many develop glomerulonephritis, diabetes mellitus, hyperlipidemia, and complement deficiency. Mental retardation in some cases. APLD is a sporadic disorder of unknown etiology.

序列相似性

Belongs to the intermediate filament family.

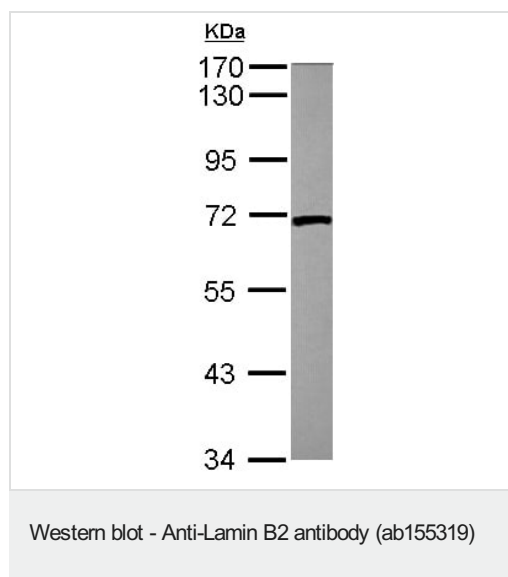
翻译后修饰

B-type lamins undergo a series of modifications, such as farnesylation and phosphorylation. Increased phosphorylation of the lamins occurs before envelope disintegration and probably plays a role in regulating lamin associations.

细胞定位

Nucleus inner membrane.

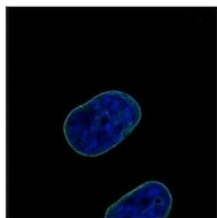
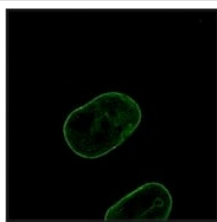
图片



Anti-Lamin B2 antibody (ab155319) at 1/10000 dilution + U87-MG cell lysate at 30 µg

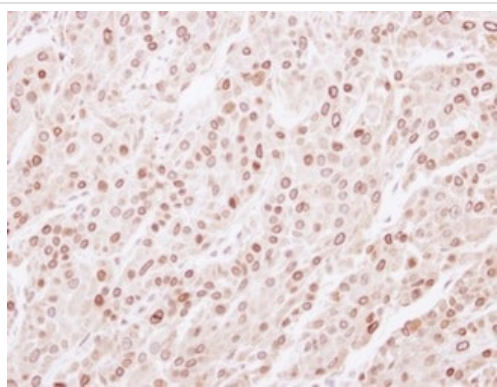
Predicted band size: 68 kDa

7.5% SDS PAGE



Immunofluorescence of paraformaldehyde-fixed HeLa cells labeling Lamin B2 using ab155319 at 1/500 dilution (green). Bottom image shows costaining with DNA probe.

Immunocytochemistry/ Immunofluorescence - Anti-Lamin B2 antibody (ab155319)



Immunohistochemical analysis of formalin-fixed, paraffin-embedded Human Ovarian carcinoma tissue labeling Lamin B with ab155319 at 1/250 dilution.

Immunohistochemistry (Formalin/PFA-fixed paraffin-embedded sections) - Anti-Lamin B2 antibody (ab155319)

Please note: All products are "FOR RESEARCH USE ONLY. NOT FOR USE IN DIAGNOSTIC PROCEDURES"

Our Abpromise to you: Quality guaranteed and expert technical support

- Replacement or refund for products not performing as stated on the datasheet
- Valid for 12 months from date of delivery
- Response to your inquiry within 24 hours
- We provide support in Chinese, English, French, German, Japanese and Spanish
- Extensive multi-media technical resources to help you
- We investigate all quality concerns to ensure our products perform to the highest standards

If the product does not perform as described on this datasheet, we will offer a refund or replacement. For full details of the Abpromise, please visit <https://www.abcam.cn/abpromise> or contact our technical team.

Terms and conditions

- Guarantee only valid for products bought direct from Abcam or one of our authorized distributors