




Anti-LAMA1 antibody [CL3087] ab210954

敲除 验证

1 Abreviews 5 图像

概述

产品名称	Anti-LAMA1抗体[CL3087]
描述	小鼠单克隆抗体[CL3087] to LAMA1
宿主	Mouse
经测试应用	适用于: IHC-P, WB
种属反应性	与反应: Human 预测可用于: Mouse, Rat 
免疫原	Synthetic peptide within Human LAMA aa 600-700. The exact immunogen sequence used to generate this antibody is proprietary information. If additional detail on the immunogen is needed to determine the suitability of the antibody for your needs, please contact our Scientific Support team to discuss your requirements. Database link: P25391
表位	 Run BLAST with  Run BLAST with ab210954 binds to an epitope located within the peptide sequence LVPENFQDFHSKRQI (aa 640 - 654)
阳性对照	WB: HeLa cell lysate; Human testis tissue lysate. IHC-P: Human lymph node and testis tissues.
常规说明	The Life Science industry has been in the grips of a reproducibility crisis for a number of years. Abcam is leading the way in addressing this with our range of recombinant monoclonal antibodies and knockout edited cell lines for gold-standard validation. Please check that this product meets your needs before purchasing. If you have any questions, special requirements or concerns, please send us an inquiry and/or contact our Support team ahead of purchase. Recommended alternatives for this product can be found below, along with publications, customer reviews and Q&As

性能

形式	Liquid
存放说明	Shipped at 4°C. Store at +4°C short term (1-2 weeks). Upon delivery aliquot. Store at -20°C long term. Avoid freeze / thaw cycle.
存储溶液	pH: 7.20 Preservative: 0.02% Sodium azide

	Constituents: 59% PBS, 40% Glycerol (glycerin, glycerine)
纯度	Protein A purified
克隆	单克隆
克隆编号	CL3087
同种型	IgG1

应用

The Abpromise guarantee **Abpromise™**承诺保证使用ab210954于以下的经测试应用

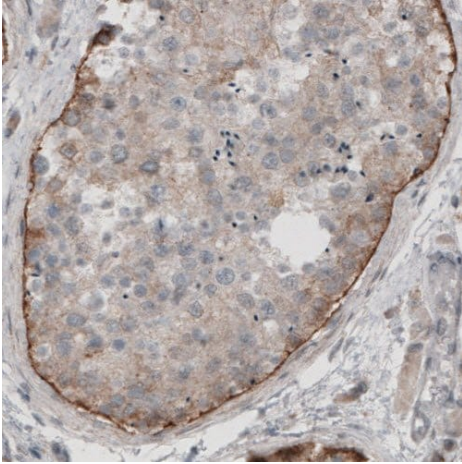
“应用说明”部分 下显示的仅为推荐的起始稀释度;实际最佳的稀释度/浓度应由使用者检定。

应用	Ab评论	说明
IHC-P		1/200 - 1/500. Perform heat mediated antigen retrieval with citrate buffer pH 6 before commencing with IHC staining protocol.
WB		1/500 - 1/1000. Predicted molecular weight: 337 kDa.

靶标

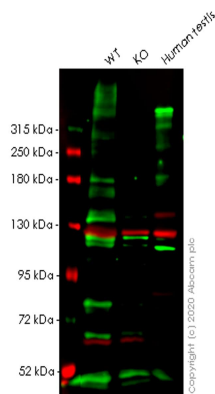
功能	Binding to cells via a high affinity receptor, laminin is thought to mediate the attachment, migration and organization of cells into tissues during embryonic development by interacting with other extracellular matrix components.
疾病相关	Poretti-Boltshauser syndrome
序列相似性	Contains 17 laminin EGF-like domains. Contains 5 laminin G-like domains. Contains 2 laminin IV type A domains. Contains 1 laminin N-terminal domain.
结构域	The alpha-helical domains I and II are thought to interact with other laminin chains to form a coiled coil structure. Domains VI, IV and G are globular.
翻译后修饰	Tyrosine phosphorylated by PKDCC/VLK.
细胞定位	Secreted, extracellular space, extracellular matrix, basement membrane. Major component.

图片



Immunohistochemistry (Formalin/PFA-fixed paraffin-embedded sections) - Anti-LAMA1 antibody [CL3087] (ab210954)

Immunohistochemical analysis of paraffin-embedded Human testis tissue, labeling LAMA1 using ab210954 at a 1/200 dilution.



Western blot - Anti-LAMA1 antibody [CL3087] (ab210954)

All lanes : Anti-LAMA1 antibody [CL3087] (ab210954) at 1/1000 dilution

Lane 1 : Wild-type HeLa cell lysate

Lane 2 : LAMA1 knockout HeLa cell lysate

Lane 3 : Human testis tissue lysate

Lysates/proteins at 20 µg per lane.

Secondary

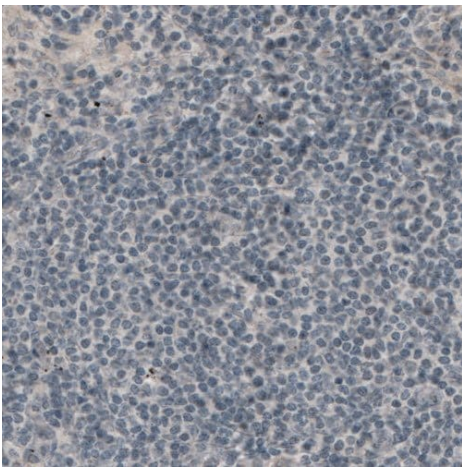
All lanes : Goat Anti-Rabbit IgG H&L (IRDye® 680RD) preadsorbed ([ab216777](#)) at 1/10000 dilution

Predicted band size: 337 kDa

Observed band size: 337 kDa

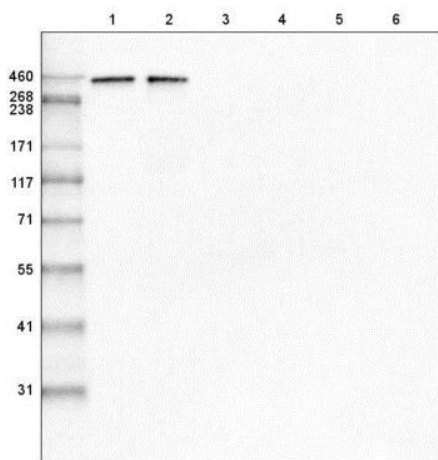
Lanes 1-3: Merged signal (red and green). Green - ab210954 observed at 337 kDa. Red - loading control [ab129002](#) observed at 124 kDa.

ab210954 Anti-LAMA1 antibody [CL3087] was shown to specifically react with LAMA1 in wild-type HeLa cells. Loss of signal was observed when knockout cell line **ab264991** (knockout cell lysate **ab258937**) was used. Wild-type and LAMA1 knockout samples were subjected to SDS-PAGE. ab210954 and Anti-Vinculin antibody [EPR8185] (**ab129002**) were incubated overnight at 4°C at 1 in 1000 dilution and 1 in 20000 dilution respectively. Blots were developed with Goat anti-Rabbit IgG H&L (IRDye® 680RD) preadsorbed (**ab216777**) and Goat anti-Mouse IgG H&L (IRDye® 800CW) preadsorbed (**ab216772**) secondary antibodies at 1 in 20000 dilution for 1 hour at room temperature before imaging.



Immunohistochemistry (Formalin/PFA-fixed paraffin-embedded sections) - Anti-LAMA1 antibody [CL3087] (ab210954)

Immunohistochemical analysis of paraffin-embedded Human lymph node tissue (negative control), labeling LAMA1 using ab210954 at a 1/200 dilution.



Western blot - Anti-LAMA1 antibody [CL3087] (ab210954)

All lanes : Anti-LAMA1 antibody [CL3087] (ab210954) at 1/500 dilution

Lane 1 : Recombinant protein fragment of human Laminin 111

Lane 2 : Recombinant protein fragment of human Laminin 121

Lane 3 : Recombinant protein fragment of human Laminin 221

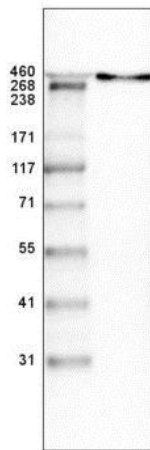
Lane 4 : Recombinant protein fragment of human Laminin 332

Lane 5 : Recombinant protein fragment of human Laminin 411

Lane 6 : Recombinant protein fragment of human Laminin 521

Developed using the ECL technique.

Predicted band size: 337 kDa



Western blot - Anti-LAMA1 antibody [CL3087]
(ab210954)

Anti-LAMA1 antibody [CL3087] (ab210954) at 1/500 dilution +
Human testis tissue lysate

Developed using the ECL technique.

Predicted band size: 337 kDa

Please note: All products are "FOR RESEARCH USE ONLY. NOT FOR USE IN DIAGNOSTIC PROCEDURES"

Our Abpromise to you: Quality guaranteed and expert technical support

- Replacement or refund for products not performing as stated on the datasheet
- Valid for 12 months from date of delivery
- Response to your inquiry within 24 hours
- We provide support in Chinese, English, French, German, Japanese and Spanish
- Extensive multi-media technical resources to help you
- We investigate all quality concerns to ensure our products perform to the highest standards

If the product does not perform as described on this datasheet, we will offer a refund or replacement. For full details of the Abpromise, please visit <https://www.abcam.cn/abpromise> or contact our technical team.

Terms and conditions

- Guarantee only valid for products bought direct from Abcam or one of our authorized distributors