

### Anti-Lactate Dehydrogenase antibody ab47010

★★★★★ [8 Abreviews](#) [31 References](#) [8 图像](#)

#### 概述

产品名称	Anti-Lactate Dehydrogenase抗体
描述	兔多克隆抗体to Lactate Dehydrogenase
宿主	Rabbit
特异性	ab47010 cross-reacts with LDHA, B and C.
经测试应用	适用于: WB, IP, ICC/IF, IHC-P
种属反应性	与反应: Human, Recombinant fragment 预测可用于: Mouse, Rat, Rabbit, Chimpanzee, Zebrafish, Chinese hamster 
免疫原	Synthetic peptide corresponding to Human Lactate Dehydrogenase aa 300 to the C-terminus conjugated to keyhole limpet haemocyanin. (Peptide available as <a href="#">ab47009</a> )
阳性对照	Recombinant human LDHA protein (His tag) ( <a href="#">ab93699</a> ) can be used as a positive control in WB. This antibody gave a positive signal in the following whole cell lysates: HeLa (Human epithelial carcinoma cell line) Jurkat (Human T cell lymphoblast-like cell line) A431 (Human epithelial carcinoma cell line) HEK293 (Human embryonic kidney cell line)
常规说明	<p>The Life Science industry has been in the grips of a reproducibility crisis for a number of years. Abcam is leading the way in addressing this with our range of recombinant monoclonal antibodies and knockout edited cell lines for gold-standard validation. Please check that this product meets your needs before purchasing.</p> <p>If you have any questions, special requirements or concerns, please send us an inquiry and/or contact our Support team ahead of purchase. Recommended alternatives for this product can be found below, along with publications, customer reviews and Q&amp;As</p>

#### 性能

形式	Liquid
存放说明	Shipped at 4°C. Store at +4°C short term (1-2 weeks). Upon delivery aliquot. Store at -20°C or -80°C. Avoid freeze / thaw cycle.
存储溶液	pH: 7.40 Preservative: 0.02% Sodium azide Constituent: PBS

Batches of this product that have a concentration < 1mg/ml may have BSA added as a stabilising agent. If you would like information about the formulation of a specific lot, please contact our scientific support team who will be happy to help.

纯度	Immunogen affinity purified
克隆	多克隆
同种型	IgG

## 应用

**The Abpromise guarantee** Abpromise™承诺保证使用ab47010于以下的经测试应用

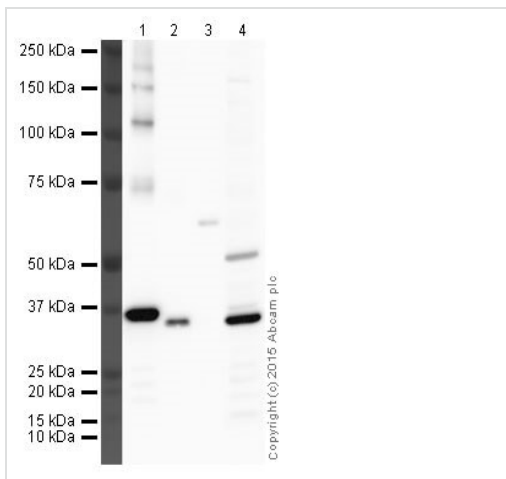
“应用说明”部分 下显示的仅为推荐的起始稀释度;实际最佳的稀释度/浓度应由使用者检定。

应用	Ab评论	说明
WB	★★★★★ (5)	Use a concentration of 1 µg/ml. Detects a band of approximately 36 kDa (predicted molecular weight: 37 kDa).Can be blocked with <b>Human Lactate Dehydrogenase peptide (ab47009)</b> .
IP		Use a concentration of 5 µg/ml.
ICC/IF		Use a concentration of 1 µg/ml.
IHC-P	★★★★★ (2)	Use a concentration of 1 µg/ml. Perform heat mediated antigen retrieval before commencing with IHC staining protocol.

## 靶标

通路	Fermentation; pyruvate fermentation to lactate; (S)-lactate from pyruvate: step 1/1.
疾病相关	Defects in LDHA are the cause of glycogen storage disease type 11 (GSD11) [MIM:612933]. A metabolic disorder that results in exertional myoglobinuria, pain, cramps and easy fatigue.
序列相似性	Belongs to the LDH/MDH superfamily. LDH family.
翻译后修饰	ISGylated.
细胞定位	Cytoplasm.

## 图片



Western blot - Anti-Lactate Dehydrogenase antibody (ab47010)

**All lanes :** Anti-Lactate Dehydrogenase antibody (ab47010)

**Lane 1 :** LDHA recombinant

**Lane 2 :** LDHB recombinant

**Lane 3 :** LDHC recombinant

**Lane 4 :** HeLa

**Predicted band size:** 37 kDa

**Exposure time:** 30 seconds

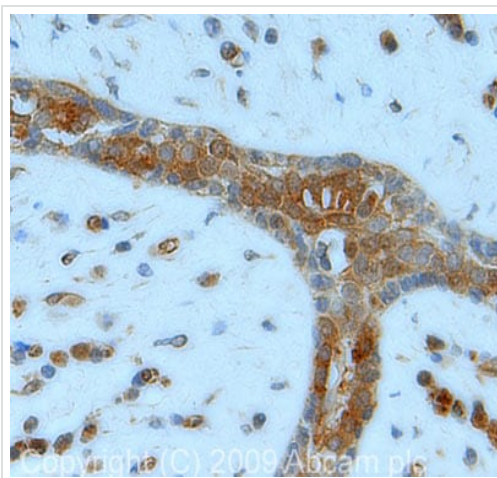
Observed bands

Lane 1 :40 kDa

Lane 2:37 kDa

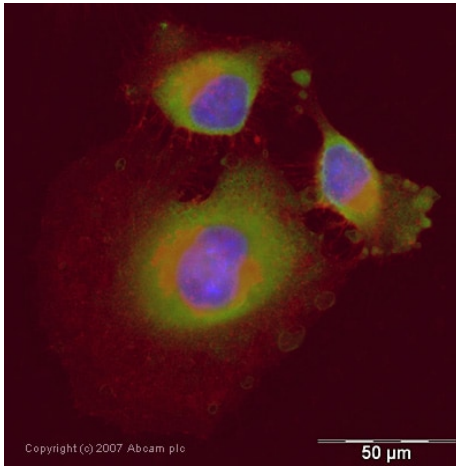
Lane 3:62 kDa

Lane 4: 37 kDa

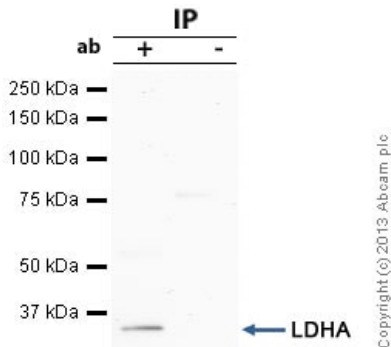


Immunohistochemistry (Formalin/PFA-fixed paraffin-embedded sections) - Anti-Lactate Dehydrogenase antibody (ab47010)

IHC image of Lactate Dehydrogenase staining in human breast carcinoma FFPE section, performed on a Leica Bond<sup>TM</sup> system using the standard protocol F. The section was pre-treated using heat mediated antigen retrieval with sodium citrate buffer (pH6, epitope retrieval solution 1) for 20 mins. The section was then incubated with ab47010, 1 µg/ml, for 15 mins at room temperature and detected using an HRP conjugated compact polymer system. DAB was used as the chromogen. The section was then counterstained with haematoxylin and mounted with DPX.



Immunocytochemistry/ Immunofluorescence - Anti-Lactate Dehydrogenase antibody (ab47010)



Immunoprecipitation - Anti-Lactate Dehydrogenase antibody (ab47010)

ICC/IF image of ab47010 stained human HeLa cells. The cells were PFA fixed (10 min), permabilised in TBS-T (20 min) and incubated with the antibody (ab47010, 1µg/ml) for 1h at room temperature. 1%BSA / 10% normal goat serum / 0.3M glycine was used to quench autofluorescence and block non-specific protein-protein interactions. The secondary antibody (green) was Alexa Fluor® 488 goat anti-rabbit IgG (H+L) used at a 1/1000 dilution for 1h. Alexa Fluor® 594 WGA was used to label plasma membranes (red). DAPI was used to stain the cell nuclei (blue).

LDHA was immunoprecipitated using 0.5mg Hela whole cell extract, 5µg of Rabbit polyclonal to LDHA and 50µl of protein G magnetic beads (+). No antibody was added to the control (-).

The antibody was incubated under agitation with Protein G beads for 10min, Hela whole cell extract lysate diluted in RIPA buffer was added to each sample and incubated for a further 10min under agitation.

Proteins were eluted by addition of 40µl SDS loading buffer and incubated for 10min at 70°C; 10µl of each sample was separated on a SDS PAGE gel, transferred to a nitrocellulose membrane, blocked with 5% BSA and probed with ab47010.

Secondary: Mouse monoclonal [SB62a] Secondary Antibody to Rabbit IgG light chain (HRP) ([ab99697](#)).

Band: 36kDa; LDHA



Western blot - Anti-Lactate Dehydrogenase antibody (ab47010)

**All lanes :** LDHA antibody (ab47010) at 1 µg/ml

**Lane 1 :** HeLa (Human epithelial carcinoma cell line) Whole Cell Lysate

**Lane 2 :** Jurkat (Human T cell lymphoblast-like cell line) Whole Cell Lysate

**Lane 3 :** A431 (Human epithelial carcinoma cell line) Whole Cell Lysate

**Lane 4 :** HEK293 Human embryonic kidney cell line Whole Cell Lysate

Lysates/proteins at 10 µg per lane.

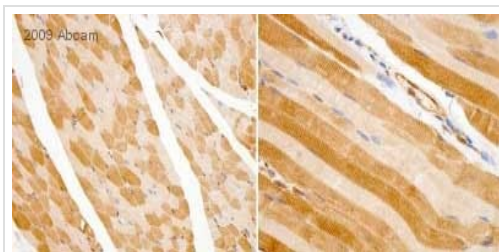
### Secondary

**All lanes :** IRDye 680 Conjugated Goat Anti-Rabbit IgG (H+L) at 1/10000 dilution

Performed under reducing conditions.

**Predicted band size:** 37 kDa

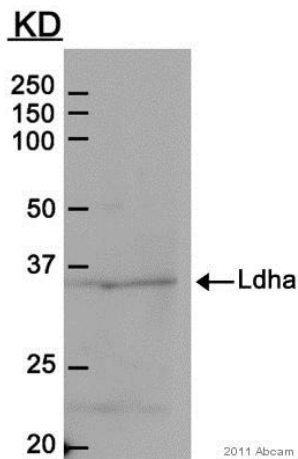
**Observed band size:** 36 kDa



Immunohistochemistry (Formalin/PFA-fixed paraffin-embedded sections) - Anti-Lactate Dehydrogenase antibody (ab47010)

This image is from an anonymous abreview.

ab47010 at a 1/400 dilution staining LDHA in human skeletal muscle sections by Immunohistochemistry (formalin/PFA-fixed paraffin-embedded sections) incubated for 20 minutes at 25°C. Heat mediated antigen retrieval used, EDTA pH 9.0, 100°C for 20 minutes. Secondary used undiluted, goat anti-mouse/rabbit IgG conjugated to HRP polymer.



Western blot - Anti-Lactate Dehydrogenase antibody (ab47010)

This image is courtesy of an anonymous Abreview

Anti-Lactate Dehydrogenase antibody (ab47010) at 1/500 dilution + Zebrafish whole cell lysate at 10 µg

### Secondary

HRP conjugated Goat anti-rabbit monoclonal secondary antibody at 1/5000 dilution

Developed using the ECL technique.

Performed under reducing conditions.

**Predicted band size:** 37 kDa

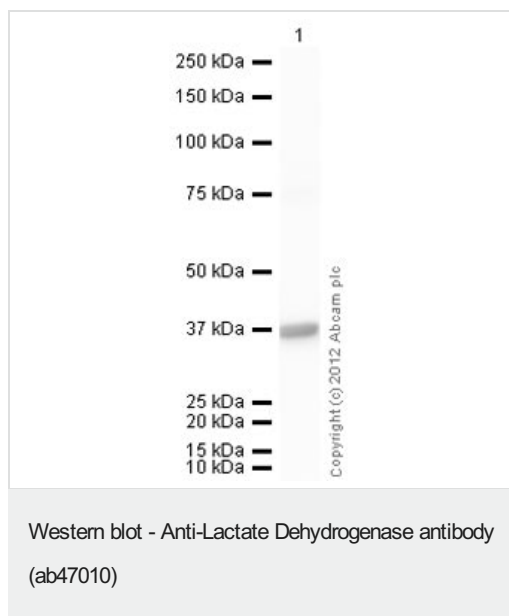
**Observed band size:** 36 kDa

**Additional bands at:** 22 kDa (possible non-specific binding)

**Exposure time:** 30 seconds

Blocking step: 5% Milk for 1 hour at 24°C

Primary antibody incubation for 12 hours at 4°C



Anti-Lactate Dehydrogenase antibody (ab47010) at 1 µg/ml +  
Recombinant human Lactate Dehydrogenase protein (Active)  
([ab93699](#)) at 0.1 µg

### Secondary

Goat Anti-Rabbit IgG H&L (HRP) preadsorbed ([ab97080](#)) at  
1/5000 dilution

Developed using the ECL technique.

Performed under reducing conditions.

**Predicted band size:** 37 kDa

**Exposure time:** 10 seconds

**Please note:** All products are "FOR RESEARCH USE ONLY. NOT FOR USE IN DIAGNOSTIC PROCEDURES"

### Our Abpromise to you: Quality guaranteed and expert technical support

- Replacement or refund for products not performing as stated on the datasheet
- Valid for 12 months from date of delivery
- Response to your inquiry within 24 hours
- We provide support in Chinese, English, French, German, Japanese and Spanish
- Extensive multi-media technical resources to help you
- We investigate all quality concerns to ensure our products perform to the highest standards

If the product does not perform as described on this datasheet, we will offer a refund or replacement. For full details of the Abpromise, please visit <https://www.abcam.cn/abpromise> or contact our technical team.

### Terms and conditions

- Guarantee only valid for products bought direct from Abcam or one of our authorized distributors