


Anti-Lactate Dehydrogenase antibody ab231903

4 图像

概述

产品名称	Anti-Lactate Dehydrogenase抗体
描述	兔多克隆抗体to Lactate Dehydrogenase
宿主	Rabbit
经测试应用	适用于: WB, IHC-P
种属反应性	与反应: Mouse, Human, Pig 预测可用于: Rat, Rabbit, Cow, Chimpanzee, Macaque monkey, Orangutan 
免疫原	Recombinant full length protein corresponding to Pig Lactate Dehydrogenase aa 1 to the C-terminus. N-terminal His-tag and GST-tag. Expressed in E. coli. Database link: P00339 Run BLAST with Run BLAST with
阳性对照	WB: Recombinant porcine Lactate Dehydrogenase protein; porcine serum and kidney tissue lysate; mouse testis tissue lysate; A431 and A375 whole cell lysate. IHC-P: Porcine skeletal muscle and heart tissue.
常规说明	<p>The Life Science industry has been in the grips of a reproducibility crisis for a number of years. Abcam is leading the way in addressing this with our range of recombinant monoclonal antibodies and knockout edited cell lines for gold-standard validation. Please check that this product meets your needs before purchasing.</p> <p>If you have any questions, special requirements or concerns, please send us an inquiry and/or contact our Support team ahead of purchase. Recommended alternatives for this product can be found below, along with publications, customer reviews and Q&As</p>

性能

形式	Liquid
存放说明	Shipped at 4°C. Store at +4°C short term (1-2 weeks). Upon delivery aliquot. Store at -20°C long term. Avoid freeze / thaw cycle.
存储溶液	pH: 7.40 Preservative: 0.011% Proclin 300 Constituents: 55.77% Glycerol (glycerin, glycerine), 44.219% PBS
纯度	Protein A purified
纯化说明	Antigen-specific affinity chromatography followed by Protein A affinity chromatography.

克隆 多克隆
同种型 IgG

应用

The Abpromise guarantee **Abpromise™**承诺保证使用ab231903于以下的经测试应用

“应用说明”部分 下显示的仅为推荐的起始稀释度;实际最佳的稀释度/浓度应由使用者检定。

应用	Ab评论	说明
WB		Use a concentration of 0.2 - 2 µg/ml. Predicted molecular weight: 37 kDa.
IHC-P		Use a concentration of 5 - 20 µg/ml.

靶标

通路 Fermentation; pyruvate fermentation to lactate; (S)-lactate from pyruvate: step 1/1.

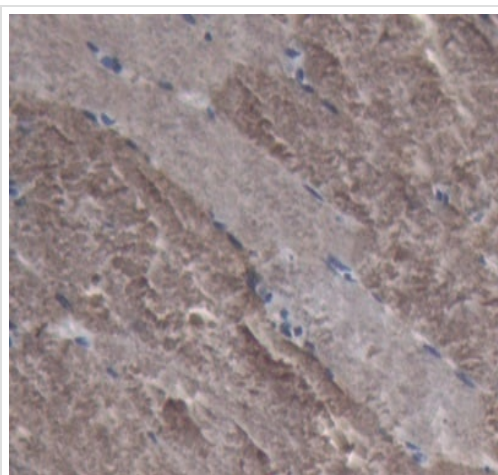
疾病相关 Defects in LDHA are the cause of glycogen storage disease type 11 (GSD11) [MIM:612933]. A metabolic disorder that results in exertional myoglobinuria, pain, cramps and easy fatigue.

序列相似性 Belongs to the LDH/MDH superfamily. LDH family.

翻译后修饰 ISGylated.

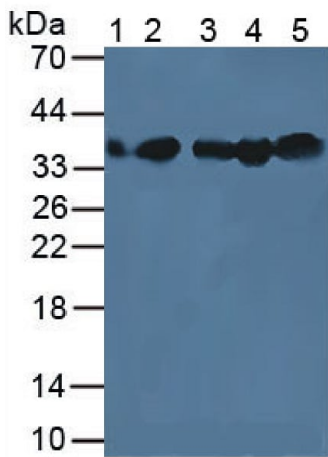
细胞定位 Cytoplasm.

图片



Formalin-fixed, paraffin-embedded porcine skeletal muscle tissue stained for Lactate Dehydrogenase using ab231903 at 20 µg/ml in immunohistochemical analysis. DAB staining.

Immunohistochemistry (Formalin/PFA-fixed paraffin-embedded sections) - Anti-Lactate Dehydrogenase antibody (ab231903)



Western blot - Anti-Lactate Dehydrogenase antibody (ab231903)

All lanes : Anti-Lactate Dehydrogenase antibody (ab231903) at 3 µg/ml

Lane 1 : Porcine serum

Lane 2 : A431 (human epidermoid carcinoma cell line) whole cell lysate

Lane 3 : A-375 (human malignant melanoma cell line) whole cell lysate

Lane 4 : Porcine kidney tissue lysate

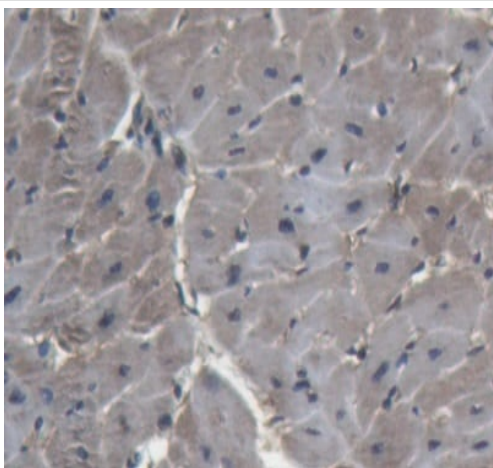
Lane 5 : Mouse testis tissue lysate

Secondary

All lanes : HRP-Linked Guinea pig Anti-Rabbit at 1/1000 dilution

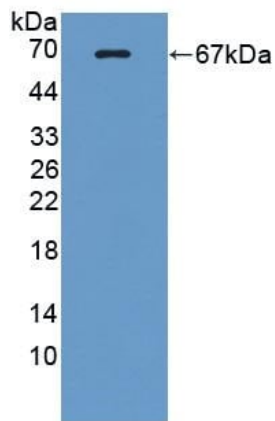
Predicted band size: 37 kDa

Observed band size: 37 kDa



Immunohistochemistry (Formalin/PFA-fixed paraffin-embedded sections) - Anti-Lactate Dehydrogenase antibody (ab231903)

Formalin-fixed, paraffin-embedded porcine heart tissue stained for Lactate Dehydrogenase using ab231903 at 20 µg/ml in immunohistochemical analysis. DAB staining.



Western blot - Anti-Lactate Dehydrogenase antibody
(ab231903)

Anti-Lactate Dehydrogenase antibody (ab231903) at 3 µg/ml +
Recombinant porcine Lactate Dehydrogenase protein

Secondary

HRP-Linked Guinea pig Anti-Rabbit at 1/1000 dilution

Predicted band size: 37 kDa

Observed band size: 67 kDa

Please note: All products are "FOR RESEARCH USE ONLY. NOT FOR USE IN DIAGNOSTIC PROCEDURES"

Our Abpromise to you: Quality guaranteed and expert technical support

- Replacement or refund for products not performing as stated on the datasheet
- Valid for 12 months from date of delivery
- Response to your inquiry within 24 hours
- We provide support in Chinese, English, French, German, Japanese and Spanish
- Extensive multi-media technical resources to help you
- We investigate all quality concerns to ensure our products perform to the highest standards

If the product does not perform as described on this datasheet, we will offer a refund or replacement. For full details of the Abpromise, please visit <https://www.abcam.cn/abpromise> or contact our technical team.

Terms and conditions

- Guarantee only valid for products bought direct from Abcam or one of our authorized distributors