

Anti-KREMEN1 antibody [RM0120-6K45] ab86636

1 References [1 图像](#)

概述

产品名称	Anti-KREMEN1抗体[RM0120-6K45]
描述	大鼠单克隆抗体[RM0120-6K45] to KREMEN1
宿主	Rat
特异性	This antibody detects mouse KREMEN1 in Western blotting.
经测试应用	适用于: WB
种属反应性	与反应: Mouse
免疫原	Fusion protein corresponding to Mouse KREMEN1 aa 1-400.
常规说明	<p>This antibody was produced from a hybridoma (mouse myeloma fused with spleen cells from a rat immunized with mouse recombinant protein of the extracellular domain of KREMEN1).</p> <p>The Life Science industry has been in the grips of a reproducibility crisis for a number of years. Abcam is leading the way in addressing this with our range of recombinant monoclonal antibodies and knockout edited cell lines for gold-standard validation. Please check that this product meets your needs before purchasing.</p> <p>If you have any questions, special requirements or concerns, please send us an inquiry and/or contact our Support team ahead of purchase. Recommended alternatives for this product can be found below, along with publications, customer reviews and Q&As</p>

性能

形式	Lyophilized:Reconstitute the antibody with 200 ul sterile PBS for a final concentration of 0.5 mg/ml
存放说明	Shipped at 4°C. Upon delivery aliquot and store at -20°C. Avoid repeated freeze / thaw cycles.
存储溶液	Constituent: PBS
纯度	Protein A purified
纯化说明	Purified from culture supernatant and lyophilized from a 0.2 µm filtered solution in PBS.
克隆	单克隆
克隆编号	RM0120-6K45
同种型	IgG2

应用

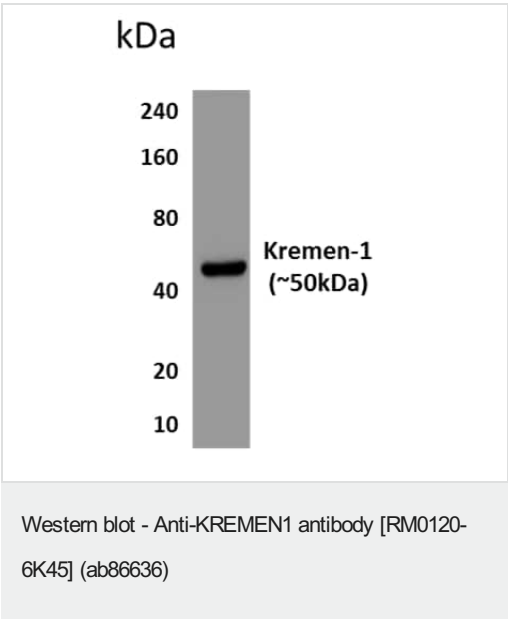
The Abpromise guarantee **Abpromise™**承诺保证使用ab86636于以下的经测试应用

“应用说明”部分 下显示的仅为推荐的起始稀释度;实际最佳的稀释度/浓度应由使用者检定。

应用	Ab评论	说明
WB		1/500 - 1/1000. Predicted molecular weight: 52 kDa.

靶标

图片



Anti-KREMEN1 antibody [RM0120-6K45] (ab86636) + Lysates of mouse liver

Predicted band size: 52 kDa

Observed band size: 50 kDa

Please note: All products are "FOR RESEARCH USE ONLY. NOT FOR USE IN DIAGNOSTIC PROCEDURES"

Our Abpromise to you: Quality guaranteed and expert technical support

- Replacement or refund for products not performing as stated on the datasheet
- Valid for 12 months from date of delivery
- Response to your inquiry within 24 hours
- We provide support in Chinese, English, French, German, Japanese and Spanish
- Extensive multi-media technical resources to help you
- We investigate all quality concerns to ensure our products perform to the highest standards

If the product does not perform as described on this datasheet, we will offer a refund or replacement. For full details of the Abpromise, please visit <https://www.abcam.cn/abpromise> or contact our technical team.

Terms and conditions

- Guarantee only valid for products bought direct from Abcam or one of our authorized distributors