

Anti-KMT6 / EZH2 antibody ab186006

★★★★★ **5 Abreviews** **70 References** **4 图像**

概述

产品名称	Anti-KMT6 / EZH2抗体
描述	兔多克隆抗体to KMT6 / EZH2
宿主	Rabbit
经测试应用	适用于: WB, IP, IHC-P
种属反应性	与反应: Mouse, Human 预测可用于: Sheep, Rabbit, Horse, Chicken, Guinea pig, Cow, Dog, Turkey, Pig, Xenopus laevis, Chimpanzee, Zebrafish, Rhesus monkey, Gorilla, Xenopus tropicalis 
免疫原	Synthetic peptide within Human KMT6/ EZH2 aa 650 to the C-terminus. The exact immunogen sequence used to generate this antibody is proprietary information. If additional detail on the immunogen is needed to determine the suitability of the antibody for your needs, please <u>contact</u> our Scientific Support team to discuss your requirements. CAA64955.1 Database link: <u>Q15910</u>
阳性对照	293T, HeLa, Jurkat, and Mouse TCMK-1 whole cell lysate.
常规说明	<div>  <u>Run BLAST with</u>  <u>Run BLAST with</u> </div> <p>The Life Science industry has been in the grips of a reproducibility crisis for a number of years. Abcam is leading the way in addressing this with our range of recombinant monoclonal antibodies and knockout edited cell lines for gold-standard validation. Please check that this product meets your needs before purchasing.</p> <p>If you have any questions, special requirements or concerns, please send us an inquiry and/or contact our Support team ahead of purchase. Recommended alternatives for this product can be found below, along with publications, customer reviews and Q&As</p>

性能

形式	Liquid
存放说明	Shipped at 4°C. Store at +4°C short term (1-2 weeks). Upon delivery aliquot. Store at -20°C long term. Avoid freeze / thaw cycle.
存储溶液	pH: 7 Preservative: 0.09% Sodium azide Constituent: 99% Tris citrate/phosphate
	pH 7-8

纯度	Immunogen affinity purified
克隆	多克隆
同种型	IgG

应用

The Abpromise guarantee

Abpromise™承诺保证使用ab186006于以下的经测试应用

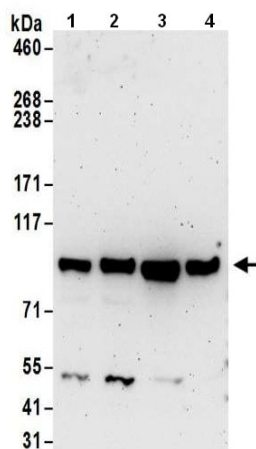
“应用说明”部分 下显示的仅为推荐的起始稀释度;实际最佳的稀释度/浓度应由使用者检定。

应用	Ab评论	说明
WB	★★★★★ (2)	1/500 - 1/2500. Predicted molecular weight: 85 kDa.
IP		Use at 2-10 µg/mg of lysate.
IHC-P	★★★☆☆ (1)	Use at an assay dependent concentration.

靶标

功能	<p>Polycomb group (PcG) protein. Catalytic subunit of the PRC2/EED-EZH2 complex, which methylates 'Lys-9' and 'Lys-27' of histone H3, leading to transcriptional repression of the affected target gene. Able to mono-, di- and trimethylate 'Lys-27' of histone H3 to form H3K27me1, H3K27me2 and H3K27me3, respectively. Compared to EZH2-containing complexes, it is more abundant in embryonic stem cells and plays a major role in forming H3K27me3, which is required for embryonic stem cell identity and proper differentiation. The PRC2/EED-EZH2 complex may also serve as a recruiting platform for DNA methyltransferases, thereby linking two epigenetic repression systems. Genes repressed by the PRC2/EED-EZH2 complex include HOXC8, HOXA9, MYT1, CDKN2A and retinoic acid target genes.</p>
组织特异性	<p>Expressed in many tissues. Overexpressed in numerous tumor types including carcinomas of the breast, colon, larynx, lymphoma and testis.</p>
序列相似性	<p>Belongs to the histone-lysine methyltransferase family. EZ subfamily.</p> <p>Contains 1 SET domain.</p>
发展阶段	<p>Expression decreases during senescence of embryonic fibroblasts (HEFs). Expression peaks at the G1/S phase boundary.</p>
翻译后修饰	<p>Phosphorylated by AKT1. Phosphorylation by AKT1 reduces methyltransferase activity.</p>
细胞定位	<p>Nucleus.</p>

图片



Western blot - Anti-KMT6 / EZH2 antibody
(ab186006)

Lane 1 : Anti-KMT6 / EZH2 antibody (ab186006) at 1 μ g

Lanes 2-4 : Anti-KMT6 / EZH2 antibody (ab186006) at 1 μ g/ml

Lane 1 : 293T whole cell lysate

Lane 2 : HeLa whole cell lysate

Lane 3 : Jurkat whole cell lysate

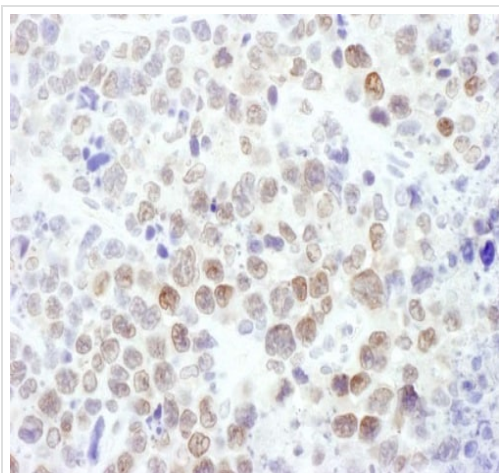
Lane 4 : Mouse TCMK-1 cells.lysate

Lysates/proteins at 50 μ g per lane.

Developed using the ECL technique.

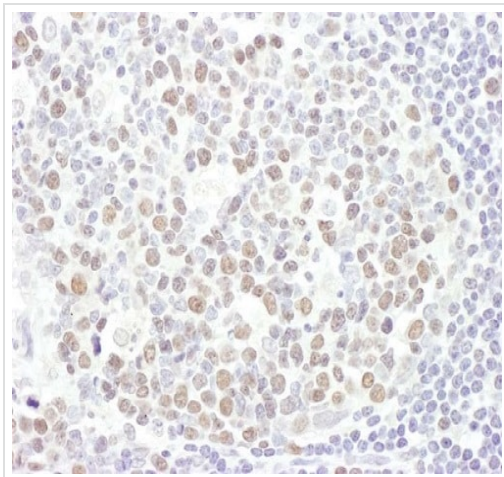
Predicted band size: 85 kDa

Exposure time: 3 minutes



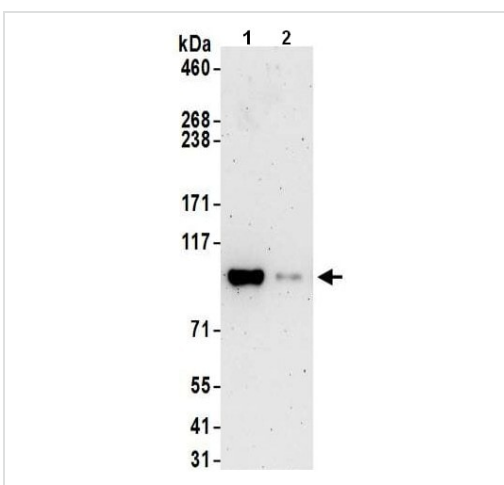
Immunohistochemistry (Formalin/PFA-fixed paraffin-embedded sections) - Anti-KMT6 / EZH2 antibody
(ab186006)

Mouse plasmacytoma tissue stained with ab186006 at a dilution of 1:1000 to detect EZH2.



Human ovarian tissue stained with ab186006 at a dilution of 1:1000 to detect EZH2.

Immunohistochemistry (Formalin/PFA-fixed paraffin-embedded sections) - Anti-KMT6 / EZH2 antibody (ab186006)



Detection of KMT6 / EZH2 by Western Blot of Immunoprecipitate.

Lane 1: ab186006 at 1 µg/ml labeling KMT6 / EZH2 in 293T whole cell lysate immunoprecipitated using ab186006 at 6µg/mg lysate (1 mg/IP; 20% of IP loaded/lane).

Lane 2: Control IgG

Detection: Chemiluminescence with an exposure time of 3 minutes.

Immunoprecipitation - Anti-KMT6 / EZH2 antibody (ab186006)

Please note: All products are "FOR RESEARCH USE ONLY. NOT FOR USE IN DIAGNOSTIC PROCEDURES"

Our Abpromise to you: Quality guaranteed and expert technical support

- Replacement or refund for products not performing as stated on the datasheet
- Valid for 12 months from date of delivery
- Response to your inquiry within 24 hours

- We provide support in Chinese, English, French, German, Japanese and Spanish
- Extensive multi-media technical resources to help you
- We investigate all quality concerns to ensure our products perform to the highest standards

If the product does not perform as described on this datasheet, we will offer a refund or replacement. For full details of the Abpromise, please visit <https://www.abcam.cn/abpromise> or contact our technical team.

Terms and conditions

- Guarantee only valid for products bought direct from Abcam or one of our authorized distributors