

Anti-KLF5 antibody ab137676

★★★★★ [5 Abreviews](#) [37 References](#) [6 图像](#)

概述

产品名称	Anti-KLF5抗体
描述	兔多克隆抗体to KLF5
宿主	Rabbit
经测试应用	适用于: IHC-P, WB, ICC/IF
种属反应性	与反应: Mouse, Human 预测可用于: Cow, Pig 
免疫原	Recombinant fragment corresponding to Human KLF5 aa 69-346. Database link: Q13887
常规说明	<p>The Life Science industry has been in the grips of a reproducibility crisis for a number of years. Abcam is leading the way in addressing this with our range of recombinant monoclonal antibodies and knockout edited cell lines for gold-standard validation. Please check that this product meets your needs before purchasing.</p> <p>If you have any questions, special requirements or concerns, please send us an inquiry and/or contact our Support team ahead of purchase. Recommended alternatives for this product can be found below, along with publications, customer reviews and Q&As</p>

性能

形式	Liquid
存放说明	Shipped at 4°C. Store at +4°C short term (1-2 weeks). Upon delivery aliquot. Store at -20°C or -80°C. Avoid freeze / thaw cycle.
存储溶液	pH: 7.00 Preservative: 0.025% Proclin 300 Constituents: 78% PBS, 1% BSA, 20% Glycerol (glycerin, glycerine)
纯度	Immunogen affinity purified
克隆	多克隆
同种型	IgG

应用

The Abpromise guarantee

Abpromise™承诺保证使用ab137676于以下的经测试应用

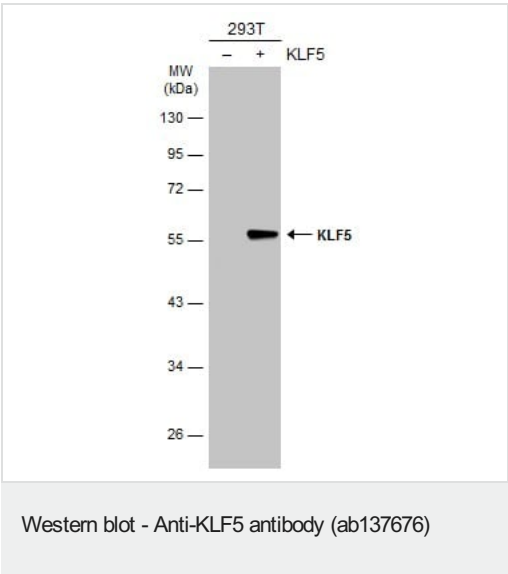
“应用说明”部分 下显示的仅为推荐的起始稀释度;实际最佳的稀释度/浓度应由使用者检定。

应用	Ab评论	说明
IHC-P		1/100 - 1/1000.
WB	★★★★★ (2)	1/500 - 1/3000. Predicted molecular weight: 51 kDa.
ICC/IF	★★★★★ (1)	1/100 - 1/1000.

靶标

功能	Transcription factor that binds to GC box promoter elements. Activates the transcription of these genes.
组织特异性	Expressed only in testis and placenta.
序列相似性	Belongs to the krueppel C2H2-type zinc-finger protein family. Contains 3 C2H2-type zinc fingers.
翻译后修饰	Ubiquitinated. Polyubiquitination involves WWP1 and leads to proteasomal degradation of this protein.
细胞定位	Nucleus.
形式	KLF5 (also known as basic transcription element-binding protein 2, BTEB2, and intestine enriched krüppel-like factor, IKLF), appears to play a central role in the regulation of intestinal epithelial renewal in both the small intestine and colon. KLF5 also regulates adipocyte differentiation.

图片



All lanes : Anti-KLF5 antibody (ab137676) at 1/5000 dilution

Lane 1 : Non-transfected 293T whole cell extract

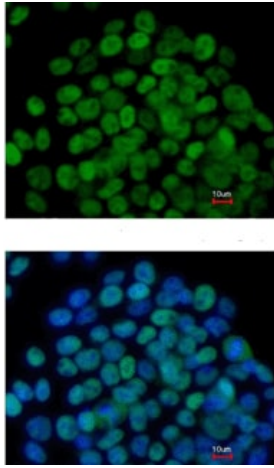
Lane 2 : Transfected 293T whole cell extract

Lysates/proteins at 30 µg per lane.

Secondary

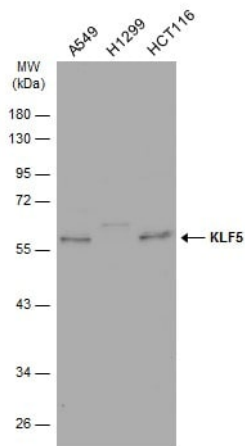
All lanes : HRP-conjugated anti-rabbit IgG

Predicted band size: 51 kDa



Immunocytochemistry/ Immunofluorescence - Anti-KLF5 antibody (ab137676)

Immunofluorescence analysis of paraformaldehyde-fixed Mouse ESC D3 cells labelling KLF5 using ab137676 at 1/200 dilution. Lower image shows cells co-stained with Hoechst 33342.



Western blot - Anti-KLF5 antibody (ab137676)

All lanes : Anti-KLF5 antibody (ab137676) at 1/1000 dilution

Lane 1 : A549 whole cell lysate

Lane 2 : H1299 whole cell lysate

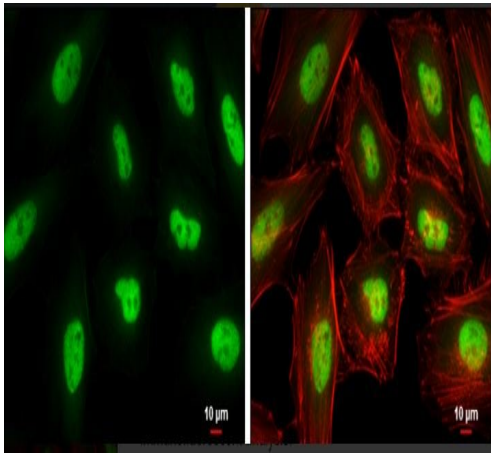
Lane 3 : HCT116 whole cell lysate

Lysates/proteins at 30 µg per lane.

Secondary

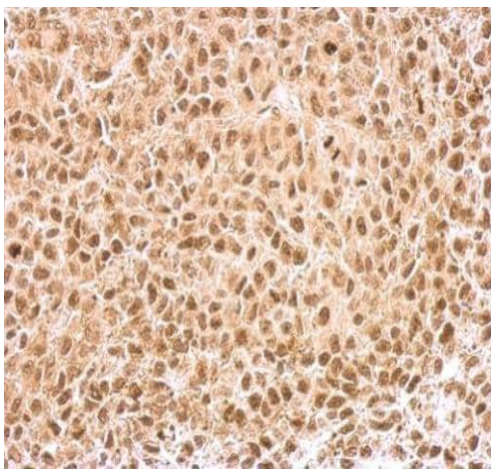
All lanes : HRP-conjugated anti-rabbit IgG

Predicted band size: 51 kDa



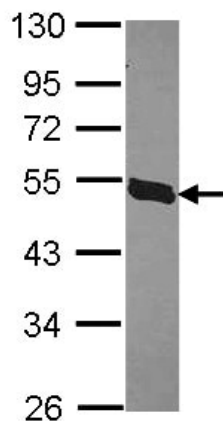
Immunocytochemistry/ Immunofluorescence - Anti-KLF5 antibody (ab137676)

HeLa cells stained for KLF5 (green) using ab137676 at 1/500 dilution in ICC/IF.



Immunohistochemistry (Formalin/PFA-fixed paraffin-embedded sections) - Anti-KLF5 antibody (ab137676)

ab137676 staining KLF5 in nucleus on HeLa xenograft by Immunohistochemistry (IHC-P - paraformaldehyde-fixed, paraffin-embedded sections). Samples were incubated with primary antibody at a dilution of 1/500



Western blot - Anti-KLF5 antibody (ab137676)

Anti-KLF5 antibody (ab137676) at 1/1000 dilution + H1299 whole cell lysate at 30 μg

Predicted band size: 51 kDa

10% SDS PAGE

Please note: All products are "FOR RESEARCH USE ONLY. NOT FOR USE IN DIAGNOSTIC PROCEDURES"

Our Abpromise to you: Quality guaranteed and expert technical support

- Replacement or refund for products not performing as stated on the datasheet
- Valid for 12 months from date of delivery
- Response to your inquiry within 24 hours

- We provide support in Chinese, English, French, German, Japanese and Spanish
- Extensive multi-media technical resources to help you
- We investigate all quality concerns to ensure our products perform to the highest standards

If the product does not perform as described on this datasheet, we will offer a refund or replacement. For full details of the Abpromise, please visit <https://www.abcam.cn/abpromise> or contact our technical team.

Terms and conditions

- Guarantee only valid for products bought direct from Abcam or one of our authorized distributors