

### Anti-KLF4 antibody ab106629

★★★★★ [4 Abreviews](#) [39 References](#) [2 图像](#)

#### 概述

产品名称	Anti-KLF4抗体
描述	兔多克隆抗体to KLF4
宿主	Rabbit
特异性	ab106629 will detect all three known isoforms. It does not cross-react with other KLF members.
经测试应用	适用于: IHC-P, WB
种属反应性	与反应: Human
免疫原	Synthetic peptide corresponding to Human KLF4 (C terminal). 20 amino acid synthetic peptide located near the c-terminus. Database link: <a href="#">O43474</a>
常规说明	<p>For information on sample preparation for western blot, please refer <a href="#">here</a>.</p> <p>The Life Science industry has been in the grips of a reproducibility crisis for a number of years. Abcam is leading the way in addressing this with our range of recombinant monoclonal antibodies and knockout edited cell lines for gold-standard validation. Please check that this product meets your needs before purchasing.</p> <p>If you have any questions, special requirements or concerns, please send us an inquiry and/or contact our Support team ahead of purchase. Recommended alternatives for this product can be found below, along with publications, customer reviews and Q&amp;As</p>

#### 性能

形式	Liquid
存放说明	Shipped at 4°C. Store at 4°C (stable for up to 12 months).
存储溶液	pH: 7.2 Preservative: 0.02% Sodium azide Constituent: PBS
纯度	Immunogen affinity purified
纯化说明	ab106629 is purified by affinity chromatography via a peptide column.
克隆	多克隆
同种型	IgG

## 应用

### The Abpromise guarantee

**Abpromise™** 承诺保证使用 ab106629 于以下的经测试应用

“应用说明”部分 下显示的仅为推荐的起始稀释度;实际最佳的稀释度/浓度应由使用者检定。

应用	Ab评论	说明
IHC-P		Use a concentration of 5 µg/ml.
WB	★★★★★ (1)	Use a concentration of 1 - 2 µg/ml. Predicted molecular weight: 55 kDa.

## 靶标

### 功能

Transcription factor; can act both as activator and as repressor. Binds the 5'-CACCC-3' core sequence. Binds to the promoter region of its own gene and can activate its own transcription. Regulates the expression of key transcription factors during embryonic development. Plays an important role in maintaining embryonic stem cells, and in preventing their differentiation. Required for establishing the barrier function of the skin and for postnatal maturation and maintenance of the ocular surface. Involved in the differentiation of epithelial cells and may also function in skeletal and kidney development. Contributes to the down-regulation of p53/TP53 transcription.

### 序列相似性

Belongs to the krueppel C2H2-type zinc-finger protein family.  
Contains 3 C2H2-type zinc fingers.

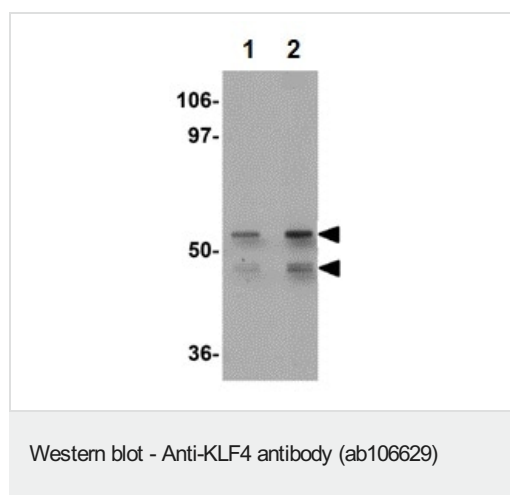
### 结构域

the 9aaTAD motif is a transactivation domain present in a large number of yeast and animal transcription factors.

### 细胞定位

Nucleus.

## 图片



**Lane 1** : Anti-KLF4 antibody (ab106629) at 1 µg/ml

**Lane 2** : Anti-KLF4 antibody (ab106629) at 2 µg/ml

**All lanes** : Human liver tissue lysate (7.5 µL (2 mg/mL) per well)

Lysates/proteins at 15 µg per lane.

### Secondary

**All lanes** : anti-rabbit IgG-HRP conjugated secondary at 1/10000 dilution

Developed using the ECL technique.

**Predicted band size:** 55 kDa

**Exposure time:** 30 seconds

Run in running buffer at 130V for 2hours(or until the dye front is close to the bottom);

Transfer the proteins to the membrane at 250mA in transfer buffer for 2hours.

After transfer, wash membrane in 1xTBST.

Incubate the membrane with blocking buffer overnight at 4°C with gentle agitation.

Dilute ab106629 to recommended dilution in 10mL of blocking buffer. Incubate membrane with ab106629 overnight at 4°C. Wash 3 times x 10 minutes in washing buffer with gentle agitation.

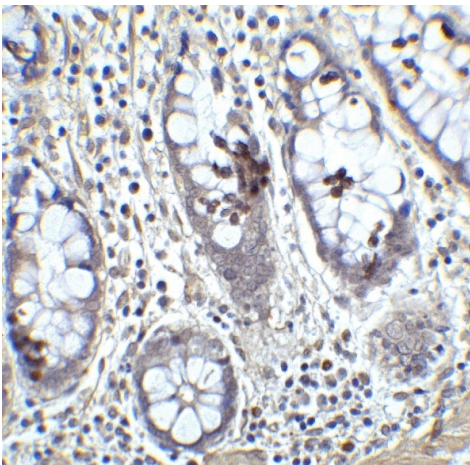
Dilute 1µL anti-rabbit IgG-HRP conjugated secondary in 10mL of blocking buffer to make a 1:10,000 dilution (can vary from 1:2,000 to 1:10,000). Incubate membrane for 1 hour at room temperature. Wash 3 times x 10 minutes in washing buffer with gentle agitation.

Running Buffer: 25mM Tris, 192 mM Glycine, 0.1% SDS.

Transfer Buffer: 20mM Tris, 150mM Glycine, 20% Methanol, 0.038% SDS.

Blocking Buffer: 5% non-fat dry milk, TBS.

Wash Buffer (TBST): 125 mM NaCl, 25mM Tris pH 8.0, 0.1% Tween-20.



Immunohistochemistry (Formalin/PFA-fixed paraffin-embedded sections) - Anti-KLF4 antibody (ab106629)

Immunohistochemical analysis of paraffin-embedded human colon tissue labeling KLF4 with ab106629 at 5 µg/mL. Antigen Retrieval: Use Citrate buffer antigen retrieval using a microwave. Endogenous peroxide blocking with 3% H<sub>2</sub>O<sub>2</sub>. Blocking with 5% BSA at room temperature for 30 minutes. ab106629 incubation at 4°C overnight. Secondary antibody incubation at room temperature for 30 minutes. Washing 3 times for 5 minutes using phosphate buffered saline. Detection using DAB.

## **Our Abpromise to you: Quality guaranteed and expert technical support**

---

- Replacement or refund for products not performing as stated on the datasheet
- Valid for 12 months from date of delivery
- Response to your inquiry within 24 hours
  
- We provide support in Chinese, English, French, German, Japanese and Spanish
- Extensive multi-media technical resources to help you
- We investigate all quality concerns to ensure our products perform to the highest standards

If the product does not perform as described on this datasheet, we will offer a refund or replacement. For full details of the Abpromise, please visit <https://www.abcam.cn/abpromise> or contact our technical team.

## **Terms and conditions**

---

- Guarantee only valid for products bought direct from Abcam or one of our authorized distributors