


Anti-KLF10 antibody ab73537

★★★★★ [2 Abreviews](#) [7 References](#) [1 图像](#)

概述

产品名称	Anti-KLF10抗体
描述	兔多克隆抗体to KLF10
宿主	Rabbit
经测试应用	适用于: WB
种属反应性	与反应: Mouse, Rat, Human 预测可用于: Cow, Non human primates 
免疫原	Synthetic peptide conjugated to KLH derived from within residues 450 to the C-terminus of Human KLF10.参阅Abcam的专有抗源政策(Peptide available as ab73859 .)
阳性对照	This antibody gave a positive signal in the following lysates: Jurkat Whole Cell; Ramos Whole Cell; Human Skeletal Muscle Tissue; Human Brain Tissue; Mouse Liver Tissue; Mouse Testis Tissue and Rat Thymus Tissue.
常规说明	<p>The Life Science industry has been in the grips of a reproducibility crisis for a number of years. Abcam is leading the way in addressing this with our range of recombinant monoclonal antibodies and knockout edited cell lines for gold-standard validation. Please check that this product meets your needs before purchasing.</p> <p>If you have any questions, special requirements or concerns, please send us an inquiry and/or contact our Support team ahead of purchase. Recommended alternatives for this product can be found below, along with publications, customer reviews and Q&As</p>

性能

形式	Liquid
存放说明	Shipped at 4°C. Store at +4°C short term (1-2 weeks). Upon delivery aliquot. Store at -20°C or -80°C. Avoid freeze / thaw cycle.
存储溶液	pH: 7.40 Preservative: 0.02% Sodium azide Constituent: PBS
	Batches of this product that have a concentration < 1mg/ml may have BSA added as a stabilising agent. If you would like information about the formulation of a specific lot, please contact our scientific support team who will be happy to help.

纯度	Immunogen affinity purified
克隆	多克隆
同种型	IgG

应用

The Abpromise guarantee

Abpromise™承诺保证使用ab73537于以下的经测试应用

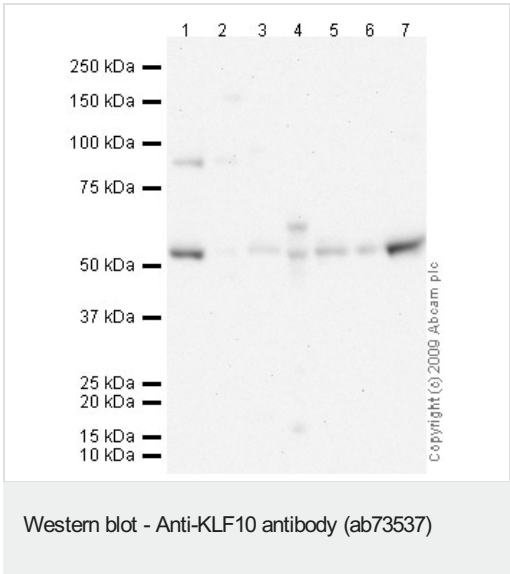
“应用说明”部分 下显示的仅为推荐的起始稀释度;实际最佳的稀释度/浓度应由使用者检定。

应用	Ab评论	说明
WB		Use a concentration of 1 µg/ml. Detects a band of approximately 53 kDa (predicted molecular weight: 53 kDa).

靶标

功能	Transcriptional repressor which binds to the consensus sequence 5'-GGTGTG-3'. Plays a role in the regulation of the circadian clock; binds to the GC box sequence in the promoter of the core clock component ARTNL/BMAL1 and represses its transcriptional activity. Regulates the circadian expression of genes involved in lipogenesis, gluconeogenesis, and glycolysis in the liver. Represses the expression of PCK2, a rate-limiting step enzyme of gluconeogenesis (By similarity). May play a role in the cell cycle regulation.
序列相似性	Belongs to the Sp1 C2H2-type zinc-finger protein family. Contains 3 C2H2-type zinc fingers.
翻译后修饰	Ubiquitinated; mediated by SIAH1 and leading to its subsequent proteasomal degradation.
细胞定位	Nucleus.

图片



All lanes : Anti-KLF10 antibody (ab73537) at 1 µg/ml

Lane 1 : Jurkat (Human T cell lymphoblast-like cell line) Whole Cell Lysate

Lane 2 : Liver (Mouse) Tissue Lysate

Lane 3 : Human skeletal muscle tissue lysate - total protein ([ab29330](#))

Lane 4 : Testis (Mouse) Tissue Lysate

Lane 5 : Thymus (Rat) Tissue Lysate

Lane 6 : Ramos (Human Burkitt's lymphoma cell line) Whole Cell Lysate

Lane 7 : Human brain tissue lysate - total protein ([ab29466](#))

Lysates/proteins at 10 µg per lane.

Secondary

All lanes : Goat polyclonal to Rabbit IgG - H&L - Pre-Adsorbed (HRP) at 1/3000 dilution

Performed under reducing conditions.

Predicted band size: 53 kDa

Observed band size: 53 kDa

Additional bands at: 85 kDa. We are unsure as to the identity of these extra bands.

Exposure time: 12 minutes

Please note: All products are "FOR RESEARCH USE ONLY. NOT FOR USE IN DIAGNOSTIC PROCEDURES"

Our Abpromise to you: Quality guaranteed and expert technical support

- Replacement or refund for products not performing as stated on the datasheet
- Valid for 12 months from date of delivery
- Response to your inquiry within 24 hours
- We provide support in Chinese, English, French, German, Japanese and Spanish
- Extensive multi-media technical resources to help you
- We investigate all quality concerns to ensure our products perform to the highest standards

If the product does not perform as described on this datasheet, we will offer a refund or replacement. For full details of the Abpromise, please visit <https://www.abcam.cn/abpromise> or contact our technical team.

Terms and conditions

- Guarantee only valid for products bought direct from Abcam or one of our authorized distributors