

Anti-Kininogen 1 antibody [EPR6097] ab124737

重组 RabMAb

3 References 6 图像

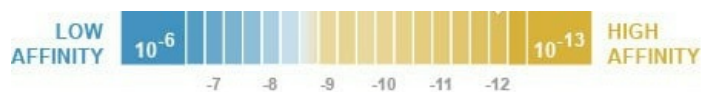
概述

产品名称	Anti-Kininogen 1抗体[EPR6097]
描述	兔单克隆抗体[EPR6097] to Kininogen 1
宿主	Rabbit
特异性	This antibody detects three isoforms of Kininogen 1: full length (120 kDa), light chain (56 kDa), and cleavage form (45 kDa).
经测试应用	适用于: ELISA, WB, IP, IHC-P 不适用于: Flow Cyt
种属反应性	与反应: Human, Recombinant fragment
免疫原	Synthetic peptide within Human Kininogen 1 aa 600 to the C-terminus. The exact sequence is proprietary.
阳性对照	Human plasma, platelet and ovarian cancer lysates; Human kidney tissue, Human ovarian adenocarcinoma tissue.
常规说明	<p>This product is a recombinant monoclonal antibody, which offers several advantages including:</p> <ul style="list-style-type: none">- High batch-to-batch consistency and reproducibility- Improved sensitivity and specificity- Long-term security of supply- Animal-free production <p>For more information see here.</p> <p>Our RabMAb[®] technology is a patented hybridoma-based technology for making rabbit monoclonal antibodies. For details on our patents, please refer to RabMAb[®] patents.</p> <p>Mouse, Rat: We have preliminary internal testing data to indicate this antibody may not react with these species. Please contact us for more information.</p>

性能

形式	Liquid
存放说明	Shipped at 4°C. Store at -20°C. Stable for 12 months at -20°C.
解离常数 (K _D)	K _D = 2.70 x 10 ⁻¹² M





[Learn more about K_D](#)

存储溶液	pH: 7.20 Preservative: 0.01% Sodium azide Constituents: 59% PBS, 40% Glycerol (glycerin, glycerine), 0.5% BSA
纯度	Protein A purified
克隆	单克隆
克隆编号	EPR6097
同种型	IgG

应用

The Abpromise guarantee **Abpromise™** 承诺保证使用 ab124737 于以下的经测试应用

“应用说明”部分 下显示的仅为推荐的起始稀释度;实际最佳的稀释度/浓度应由使用者检定。

应用	Ab 评论	说明
ELISA		Use at an assay dependent concentration.
WB		1/10000 - 1/50000. Detects a band of approximately 45, 56, 120 kDa (predicted molecular weight: 48, 72 kDa).
IP		1/10 - 1/100.
IHC-P		1/100 - 1/250. Perform heat mediated antigen retrieval before commencing with IHC staining protocol. Heat up to 98 degrees C, below boiling, and then let cool for 10-20 min

应用说明 Is unsuitable for Flow Cyt.

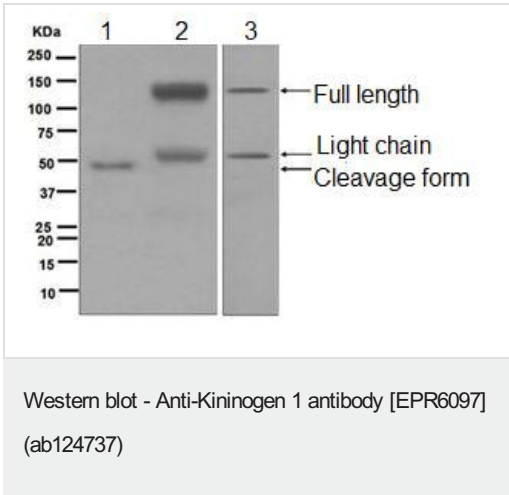
靶标

功能 (1) Kininogens are inhibitors of thiol proteases; (2) HMW-kininogen plays an important role in blood coagulation by helping to position optimally prekallikrein and factor XI next to factor XII; (3) HMW-kininogen inhibits the thrombin- and plasmin-induced aggregation of thrombocytes; (4) the active peptide bradykinin that is released from HMW-kininogen shows a variety of physiological effects: (4A) influence in smooth muscle contraction, (4B) induction of hypotension, (4C) natriuresis and diuresis, (4D) decrease in blood glucose level, (4E) it is a mediator of inflammation and causes (4E1) increase in vascular permeability, (4E2) stimulation of nociceptors (4E3) release of other mediators of inflammation (e.g. prostaglandins), (4F) it has a cardioprotective effect (directly via bradykinin action, indirectly via endothelium-derived relaxing factor action); (5) LMW-kininogen inhibits the aggregation of thrombocytes; (6) LMW-kininogen is in contrast to HMW-kininogen not involved in blood clotting.

组织特异性 Secreted in plasma. T-kinin is detected in malignant ovarian, colon and breast carcinomas, but not in benign tumors.

疾病相关	Defects in KNG1 are the cause of high molecular weight kininogen deficiency (HMWK deficiency) [MIM:228960]. HMWK deficiency is an autosomal recessive coagulation defect. Patients with HMWK deficiency do not have a hemorrhagic tendency, but they exhibit abnormal surface-mediated activation of fibrinolysis.
序列相似性	Contains 3 cystatin domains.
翻译后修饰	<p>Bradykinin is released from kininogen by plasma kallikrein.</p> <p>Hydroxylation of Pro-383 occurs prior to the release of bradykinin.</p> <p>Phosphorylation sites are present in the extracellular medium.</p> <p>N- and O-glycosylated. O-glycosylated with core 1 or possibly core 8 glycans.</p>
细胞定位	Secreted > extracellular space.

图片



All lanes : Anti-Kininogen 1 antibody [EPR6097] (ab124737) at 1/10000 dilution

- Lane 1 :** Human plasma
- Lane 2 :** Human platelet tissue lysate
- Lane 3 :** Human ovarian cancer tissue lysate

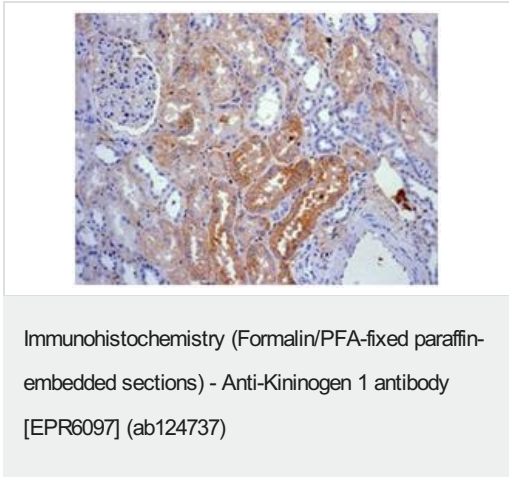
Lysates/proteins at 10 µg per lane.

Secondary

All lanes : Goat anti-rabbit HRP conjugated at 1/2000 dilution

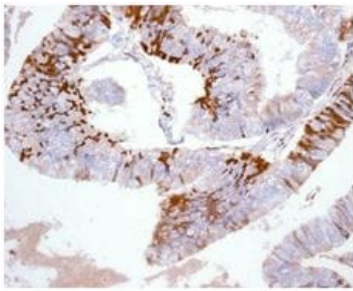
Predicted band size: 48, 72 kDa

ab124737 is detecting three isoforms of Kininogen 1: full length (120 kDa), light chain (56 kDa), and cleavage form (45 kDa).



ab124737 at 1/100 dilution staining Kininogen 1 in paraffin-embedded Human kidney tissues by Immunohistochemistry.

Perform heat mediated antigen retrieval before commencing with IHC staining protocol.

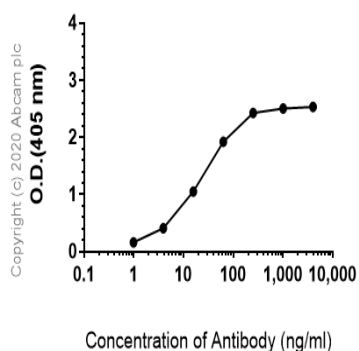


Immunohistochemistry (Formalin/PFA-fixed paraffin-embedded sections) - Anti-Kininogen 1 antibody [EPR6097] (ab124737)

ab124737 at 1/100 dilution staining Kininogen 1 in paraffin-embedded Human ovarian adenocarcinoma tissue by Immunohistochemistry.

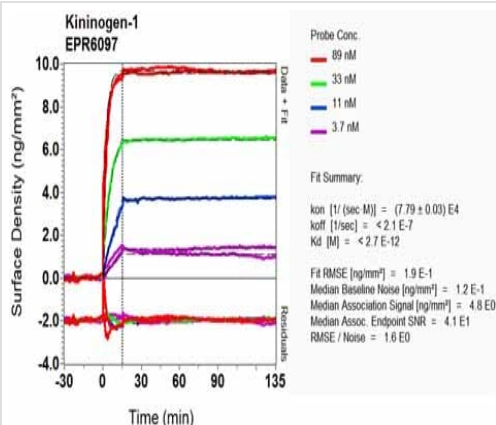
Perform heat mediated antigen retrieval before commencing with IHC staining protocol.

Indirect ELISA antibody dose-response curve antigen at 1000 ng/ml



ELISA - Anti-Kininogen 1 antibody [EPR6097] (ab124737)

ELISA analysis of Human Kininogen-1 recombinant protein at 1000 ng/mL with ab124737. An Alkaline Phosphatase-conjugated AffiniPure Goat Anti-Rabbit IgG (H+L) at 1/2500 dilution was used as the secondary antibody.



OI-RD Scanning - Anti-Kininogen 1 antibody [EPR6097] (ab124737)

Equilibrium dissociation constant (K_D)

Learn more about K_D

[Click here to learn more about \$K_D\$](#)

Why choose a recombinant antibody?



Research with confidence
Consistent and reproducible results



Long-term and scalable supply
Recombinant technology



Success from the first experiment
Confirmed specificity



Ethical standards compliant
Animal-free production

Anti-Kininogen 1 antibody [EPR6097] (ab124737)

Please note: All products are "FOR RESEARCH USE ONLY. NOT FOR USE IN DIAGNOSTIC PROCEDURES"

Our Abpromise to you: Quality guaranteed and expert technical support

- Replacement or refund for products not performing as stated on the datasheet
- Valid for 12 months from date of delivery
- Response to your inquiry within 24 hours
- We provide support in Chinese, English, French, German, Japanese and Spanish
- Extensive multi-media technical resources to help you
- We investigate all quality concerns to ensure our products perform to the highest standards

If the product does not perform as described on this datasheet, we will offer a refund or replacement. For full details of the Abpromise, please visit <https://www.abcam.cn/abpromise> or contact our technical team.

Terms and conditions

- Guarantee only valid for products bought direct from Abcam or one of our authorized distributors