

Anti-KIF4A/KIF4 antibody ab3815

★★★★★ [5 Abreviews](#) [6 References](#) [2 图像](#)

概述

产品名称	Anti-KIF4A/KIF4抗体
描述	山羊多克隆抗体to KIF4A/KIF4
宿主	Goat
经测试应用	适用于: ICC/IF, WB
种属反应性	与反应: Mouse, Human 预测可用于: Rat, Cow, Pig 
免疫原	Synthetic peptide corresponding to Human KIF4A/KIF4 aa 1219-1232 (C terminal). Sequence: SFFSGCSPIEEEAH (Peptide available as ab22955) <div>  Run BLAST with  Run BLAST with </div>
阳性对照	WB: NIH/3T3 nuclear lysate. ICC/IF: U-2 OS cells.
常规说明	<p>The Life Science industry has been in the grips of a reproducibility crisis for a number of years. Abcam is leading the way in addressing this with our range of recombinant monoclonal antibodies and knockout edited cell lines for gold-standard validation. Please check that this product meets your needs before purchasing.</p> <p>If you have any questions, special requirements or concerns, please send us an inquiry and/or contact our Support team ahead of purchase. Recommended alternatives for this product can be found below, along with publications, customer reviews and Q&As</p>

性能

形式	Liquid
存放说明	Shipped at 4°C. Upon delivery aliquot and store at -20°C or -80°C. Avoid repeated freeze / thaw cycles.
存储溶液	pH: 7.30 Preservative: 0.02% Sodium azide Constituent: 0.5% BSA
纯度	Immunogen affinity purified
纯化说明	Purified from goat serum by ammonium sulphate precipitation followed by antigen affinity

chromatography using the immunizing peptide.

克隆

多克隆

同种型

IgG

应用

The Abpromise guarantee

Abpromise™承诺保证使用ab3815于以下的经测试应用

“应用说明”部分 下显示的仅为推荐的起始稀释度;实际最佳的稀释度/浓度应由使用者检定。

应用	Ab评论	说明
ICC/IF	★★★★★ (2)	Use a concentration of 10 µg/ml.
WB	★★★★★ (1)	Use a concentration of 1 - 2 µg/ml. Predicted molecular weight: 140 kDa.

靶标

功能

Motor protein that translocates PRC1 to the plus ends of interdigitating spindle microtubules during the metaphase to anaphase transition, an essential step for the formation of an organized central spindle midzone and midbody and for successful cytokinesis. May play a role in mitotic chromosomal positioning and bipolar spindle stabilization.

组织特异性

Highly expressed in hematopoietic tissues, fetal liver, spleen, thymus and adult thymus and bone marrow. Lower levels are found in heart, testis, kidney, colon and lung.

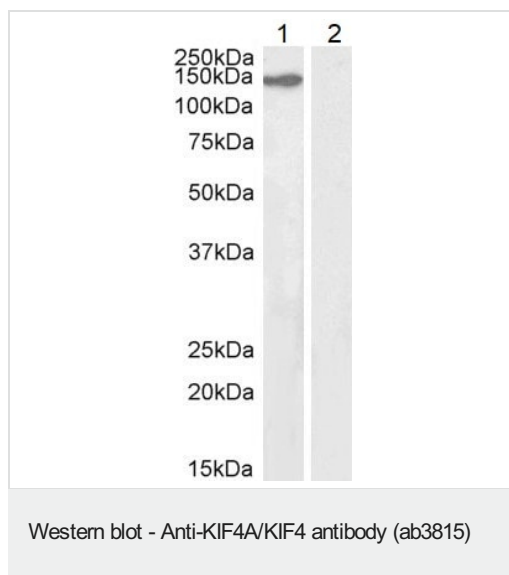
序列相似性

Belongs to the kinesin-like protein family. Chromokinesin subfamily.
Contains 1 kinesin-motor domain.

细胞定位

Nucleus matrix. Cytoplasm > cytoskeleton > spindle. Midbody. Chromosome. Not present in the nucleolus. In early mitosis, associated with the mitotic spindle, in anaphase, localized to the spindle midzone and, in telophase and cytokinesis, to the midbody. In late cytokinesis, found in the center of the midbody. Associated with chromosomes at all stages of mitosis.

图片



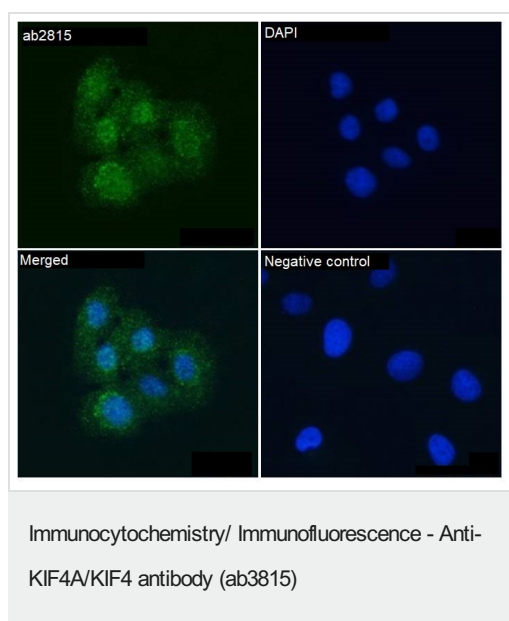
All lanes : Anti-KIF4A/KIF4 antibody (ab3815) at 2 µg/ml

Lane 1 : NIH/3T3 nuclear lysate

Lane 2 : Human ovary lysate

Lysates/proteins at 35 µg per lane.

Predicted band size: 140 kDa



Immunocytochemical analysis of paraformaldehyde-fixed U-2 OS cells permeabilized with 0.15% Triton. Cells were incubated with ab3815 at 10 µg/ml for 1 hour followed by an Alexa Fluor® 488 secondary at 4 µg/ml (green). The nuclear stain is DAPI (blue). Negative control is unimmunized goat IgG at 10 µg/ml, followed by an Alexa Fluor® 488 secondary at 4 µg/ml (green).

Please note: All products are "FOR RESEARCH USE ONLY. NOT FOR USE IN DIAGNOSTIC PROCEDURES"

Our Abpromise to you: Quality guaranteed and expert technical support

- Replacement or refund for products not performing as stated on the datasheet
- Valid for 12 months from date of delivery
- Response to your inquiry within 24 hours
- We provide support in Chinese, English, French, German, Japanese and Spanish
- Extensive multi-media technical resources to help you
- We investigate all quality concerns to ensure our products perform to the highest standards

If the product does not perform as described on this datasheet, we will offer a refund or replacement. For full details of the Abpromise, please visit <https://www.abcam.cn/abpromise> or contact our technical team.

Terms and conditions

- Guarantee only valid for products bought direct from Abcam or one of our authorized distributors