


Anti-KIAA0090 antibody ab242112

[1 References](#) [2 图像](#)

概述

产品名称	Anti-KIAA0090抗体
描述	兔多克隆抗体to KIAA0090
宿主	Rabbit
经测试应用	适用于: IP, WB
种属反应性	与反应: Mouse, Human 预测可用于: Chicken, Xenopus laevis, Orangutan 
免疫原	Synthetic peptide within Human KIAA0090 aa 1-50. The exact sequence is proprietary. Database link: Q8N766
阳性对照	WB: HeLa, HEK-293T, Jurkat, TCMK-1 and NIH/3T3 whole cell lysates. IP: Jurkat whole cell lysate.
常规说明	<p>The Life Science industry has been in the grips of a reproducibility crisis for a number of years. Abcam is leading the way in addressing this with our range of recombinant monoclonal antibodies and knockout edited cell lines for gold-standard validation. Please check that this product meets your needs before purchasing.</p> <p>If you have any questions, special requirements or concerns, please send us an inquiry and/or contact our Support team ahead of purchase. Recommended alternatives for this product can be found below, along with publications, customer reviews and Q&As</p>

性能

形式	Liquid
存放说明	Shipped at 4°C. Store at +4°C short term (1-2 weeks). Upon delivery aliquot. Store at -20°C long term. Avoid freeze / thaw cycle.
存储溶液	pH: 6.8 Preservative: 0.09% Sodium azide Constituents: Tris buffered saline, 0.1% BSA
纯度	Immunogen affinity purified
纯化说明	Antibody was affinity purified using an epitope specific to KIAA0090 immobilized on solid support.
克隆	多克隆

同种型

IgG

应用

The Abpromise guarantee

Abpromise™ 承诺保证使用 ab242112 于以下的经测试应用

“应用说明”部分 下显示的仅为推荐的起始稀释度;实际最佳的稀释度/浓度应由使用者检定。

应用	Ab评论	说明
IP		Use at an assay dependent concentration. 20 µl/mg lysate
WB		1/1000. Predicted molecular weight: 112 kDa.

靶标

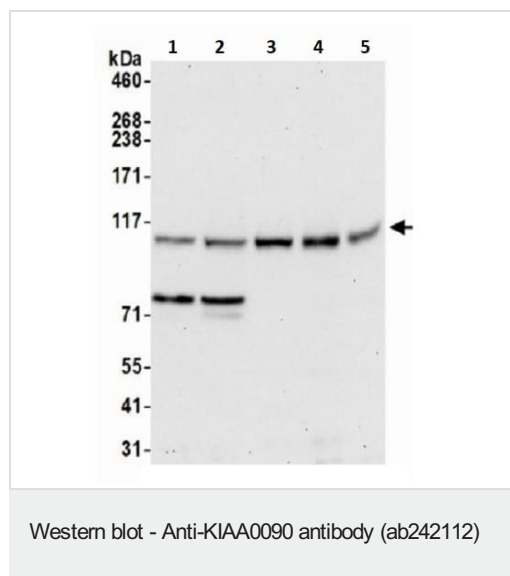
序列相似性

Contains 1 DUF1620 domain.

细胞定位

Membrane.

图片



All lanes : Anti-K1A0090 antibody (ab242112) at 1/1000 dilution

Lane 1 : HeLa (Human epithelial cell line from cervix adenocarcinoma) whole cell lysate

Lane 2 : HEK-293T (Human epithelial cell line from embryonic kidney transformed with large T antigen) whole cell lysate

Lane 3 : Jurkat (Human T cell leukemia cell line from peripheral blood) whole cell lysate

Lane 4 : TCMK-1 (Mouse kidney epithelial cell line) whole cell lysate

Lane 5 : NIH/3T3 (Mouse embryo fibroblast cell line) whole cell lysate

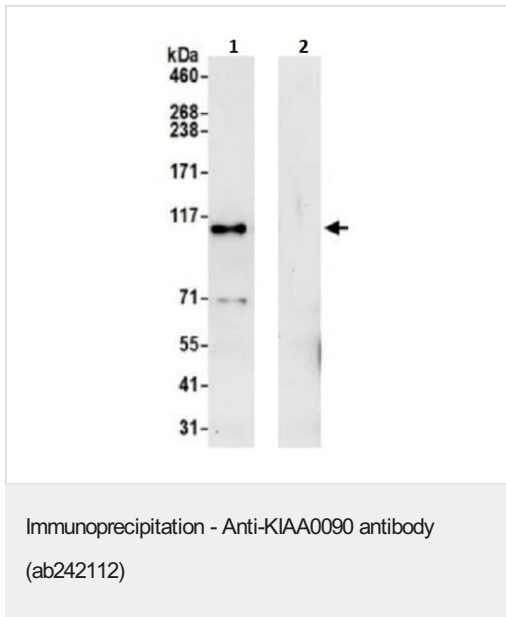
Lysates/proteins at 50 µg per lane.

Developed using the ECL technique.

Predicted band size: 112 kDa

Exposure time: 30 seconds

Prepared using NETN lysis buffer.



KIAA0090 was immunoprecipitated from Jurkat (human T cell leukemia cell line from peripheral blood) whole cell lysate (1 mg per IP reaction; 20% of IP loaded) prepared using NETN lysis buffer. ab242112 used for IP at 20 μ l per reaction. For WB at 1/250 dilution.

Lane 1: ab242112 IP in Jurkat whole cell lysate.

Lane 2: Control IgG in Jurkat whole cell lysate.

Chemiluminescence detection: 30 seconds.

Please note: All products are "FOR RESEARCH USE ONLY. NOT FOR USE IN DIAGNOSTIC PROCEDURES"

Our Abpromise to you: Quality guaranteed and expert technical support

- Replacement or refund for products not performing as stated on the datasheet
- Valid for 12 months from date of delivery
- Response to your inquiry within 24 hours
- We provide support in Chinese, English, French, German, Japanese and Spanish
- Extensive multi-media technical resources to help you
- We investigate all quality concerns to ensure our products perform to the highest standards

If the product does not perform as described on this datasheet, we will offer a refund or replacement. For full details of the Abpromise, please visit <https://www.abcam.cn/abpromise> or contact our technical team.

Terms and conditions

- Guarantee only valid for products bought direct from Abcam or one of our authorized distributors