


Anti-KDS antibody [EPR4947(2)] ab150388

敲除验证 重组 RabMAb

2 References 3 图像

概述	
产品名称	Anti-KDS抗体[EPR4947(2)]
描述	兔单克隆抗体[EPR4947(2)] to KDS
宿主	Rabbit
经测试应用	适用于: WB 不适用于: Flow Cyt, ICC/IF or IP
种属反应性	与反应: Human 预测可用于: Mouse, Rat 
免疫原	Synthetic peptide within Human KDS aa 850 to the C-terminus (C terminal). The exact sequence is proprietary. Database link: Q9H2K8
阳性对照	Jurkat, 293T, K562 and HeLa cell lysates
常规说明	<p>This antibody was developed as part of a collaboration between Epitomics and the lab of Melanie Cobb at UT Southwestern Medical Center.</p> <p>This product is a recombinant monoclonal antibody, which offers several advantages including:</p> <ul style="list-style-type: none">- High batch-to-batch consistency and reproducibility- Improved sensitivity and specificity- Long-term security of supply- Animal-free production <p>For more information see here.</p> <p>Our RabMAb[®] technology is a patented hybridoma-based technology for making rabbit monoclonal antibodies. For details on our patents, please refer to RabMAb[®] patents.</p>
性能	
形式	Liquid
存放说明	Shipped at 4°C. Upon delivery aliquot and store at -20°C. Avoid freeze / thaw cycles.
存储溶液	pH: 7.2 Preservative: 0.01% Sodium azide Constituents: 9% PBS, 40% Glycerol (glycerin, glycerine), 0.05% BSA, 50% Tissue culture supernatant

纯度	Protein A purified
克隆	单克隆
克隆编号	EPR4947(2)
同种型	IgG

应用

The Abpromise guarantee
Abpromise™承诺保证使用ab150388于以下的经测试应用

“应用说明”部分 下显示的仅为推荐的起始稀释度;实际最佳的稀释度/浓度应由使用者检定。

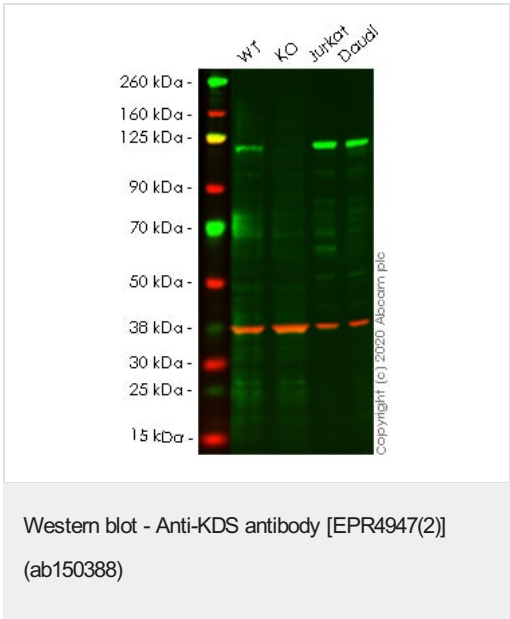
应用	Ab评论	说明
WB		1/1000 - 1/10000. Predicted molecular weight: 105 kDa.

应用说明
Is unsuitable for Flow Cyt,ICC/IF or IP.

靶标

功能	Inhibits the basal activity of Jun kinase. Negatively regulated by epidermal growth factor (EGF). When overexpressed, may activate ERK1/ERK2 and JNK/SAPK.
组织特异性	Ubiquitously expressed at a low level, and highly expressed in peripheral blood leukocytes (PBLs), thymus, spleen, kidney, skeletal muscle, heart and liver.
序列相似性	Belongs to the protein kinase superfamily. STE Ser/Thr protein kinase family. STE20 subfamily. Contains 1 protein kinase domain.
翻译后修饰	Autophosphorylated. Phosphorylated upon DNA damage, probably by ATM or ATR.
细胞定位	Cytoplasm. Cell membrane. Also localized to the peripheral cell membrane.

图片



All lanes : Anti-KDS antibody [EPR4947(2)] (ab150388) at 1/1000 dilution

- Lane 1 : Wild-type HeLa cell lysate at 40 µg
- Lane 2 : TAOK3 knockout HeLa cell lysate at 40 µg
- Lane 3 : Jurkat cell lysate at 10 µg
- Lane 4 : Daudi cell lysate at 10 µg

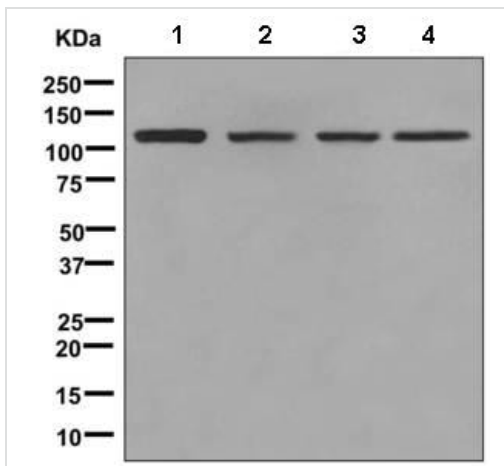
Performed under reducing conditions.

Predicted band size: 105 kDa

Observed band size: 105 kDa

Lanes 1- 4: Merged signal (red and green). Green - ab150388 observed at 105 kDa. Red - Anti-GAPDH antibody [6C5] - Loading Control ([ab8245](#)) observed at 37 kDa.

ab150388 was shown to react with KDS in wild-type HeLa cells in western blot. Loss of signal was observed when knockout cell line [ab265108](#) (knockout cell lysate [ab258222](#)) was used. Wild-type HeLa and TAOK3 knockout HeLa cell lysates were subjected to SDS-PAGE. Membrane was blocked for 1 hour at room temperature in 0.1% TBST with 3% non-fat dried milk. ab150388 and Anti-GAPDH antibody [6C5] - Loading Control ([ab8245](#)) overnight at 4°C at a 1 in 1000 dilution and a 1 in 20000 dilution respectively. Blots were developed with Goat anti-Rabbit IgG H&L (IRDye®800CW) preadsorbed ([ab216773](#)) and Goat anti-Mouse IgG H&L (IRDye®680RD) preadsorbed ([ab216776](#)) secondary antibodies at 1 in 20000 dilution for 1 hour at room temperature before imaging.



Western blot - Anti-KDS antibody [EPR4947(2)] (ab150388)

All lanes : Anti-KDS antibody [EPR4947(2)] (ab150388) at 1/1000 dilution

Lane 1 : Jurkat cell lysate

Lane 2 : 293T cell lysate

Lane 3 : K562 cell lysate

Lane 4 : HeLa cell lysate

Lysates/proteins at 10 µg per lane.

Secondary

All lanes : HRP labelled goat anti-rabbit antibody at 1/2000 dilution

Predicted band size: 105 kDa

Why choose a recombinant antibody?



Research with confidence
Consistent and reproducible results



Long-term and scalable supply
Recombinant technology



Success from the first experiment
Confirmed specificity



Ethical standards compliant
Animal-free production

Anti-KDS antibody [EPR4947(2)] (ab150388)

Please note: All products are "FOR RESEARCH USE ONLY. NOT FOR USE IN DIAGNOSTIC PROCEDURES"

Our Abpromise to you: Quality guaranteed and expert technical support

- Replacement or refund for products not performing as stated on the datasheet
- Valid for 12 months from date of delivery
- Response to your inquiry within 24 hours
- We provide support in Chinese, English, French, German, Japanese and Spanish
- Extensive multi-media technical resources to help you
- We investigate all quality concerns to ensure our products perform to the highest standards

If the product does not perform as described on this datasheet, we will offer a refund or replacement. For full details of the Abpromise, please visit <https://www.abcam.cn/abpromise> or contact our technical team.

Terms and conditions

- Guarantee only valid for products bought direct from Abcam or one of our authorized distributors