

# Anti-KDM5A / Jarid1A / RBBP2 antibody [EPR18651] ab194286

敲除验证
重组
RabMAb

[1 Abreviews](#)
[5 References](#)
[8 图像](#)

### 概述

<b>产品名称</b>	Anti-KDM5A / Jarid1A / RBBP2抗体[EPR18651]
<b>描述</b>	兔单克隆抗体[EPR18651] to KDM5A / Jarid1A / RBBP2
<b>宿主</b>	Rabbit
<b>经测试应用</b>	<b>适用于:</b> ICC/IF, IP, WB, Flow Cyt (Intra)
<b>种属反应性</b>	<b>与反应:</b> Mouse, Human
<b>免疫原</b>	Recombinant fragment. This information is proprietary to Abcam and/or its suppliers.
<b>阳性对照</b>	WB: HeLa, LCC, HEK-293 and NIH/3T3 whole cell lysates; mouse testis lysate. ICC/IF: HeLa cells. IP: HeLa whole cell lysate. Flow Cyt (intra): NIH/3T3 cell lysate
<b>常规说明</b>	<p>This product is a recombinant monoclonal antibody, which offers several advantages including:</p> <ul style="list-style-type: none"> <li>- High batch-to-batch consistency and reproducibility</li> <li>- Improved sensitivity and specificity</li> <li>- Long-term security of supply</li> <li>- Animal-free production</li> </ul> <p>For more information <a href="#">see here</a>.</p> <p>Our RabMAb<sup>®</sup> technology is a patented hybridoma-based technology for making rabbit monoclonal antibodies. For details on our patents, please refer to <a href="#">RabMAb<sup>®</sup> patents</a>.</p>

### 性能

<b>形式</b>	Liquid
<b>存放说明</b>	Shipped at 4°C. Store at +4°C short term (1-2 weeks). Upon delivery aliquot. Store at -20°C long term. Avoid freeze / thaw cycle.
<b>存储溶液</b>	<p>pH: 7.2</p> <p>Preservative: 0.01% Sodium azide</p> <p>Constituents: 59% PBS, 0.05% BSA, 40% Glycerol (glycerin, glycerine)</p>
<b>纯度</b>	Protein A purified
<b>克隆</b>	单克隆
<b>克隆编号</b>	EPR18651
<b>同种型</b>	IgG

## 应用

### The Abpromise guarantee

**Abpromise™** 承诺保证使用 ab194286 于以下的经测试应用

“应用说明”部分下显示的仅为推荐的起始稀释度；实际最佳的稀释度/浓度应由使用者检定。

应用	Ab评论	说明
ICC/IF		1/2000.
IP		1/100.
WB		1/5000. Detects a band of approximately 192 kDa (predicted molecular weight: 192 kDa).
Flow Cyt (Intra)		1/1500.

## 靶标

### 功能

Histone demethylase that specifically demethylates 'Lys-4' of histone H3, thereby playing a central role in histone code. Does not demethylate histone H3 'Lys-9', H3 'Lys-27', H3 'Lys-36', H3 'Lys-79' or H4 'Lys-20'. Demethylates trimethylated and dimethylated but not monomethylated H3 'Lys-4'. May stimulate transcription mediated by nuclear receptors. May be involved in transcriptional regulation of Hox proteins during cell differentiation. May participate in transcriptional repression of cytokines such as CXCL12.

### 序列相似性

Belongs to the JARID1 histone demethylase family.

Contains 1 ARID domain.

Contains 1 JmjC domain.

Contains 1 JmjN domain.

Contains 3 PHD-type zinc fingers.

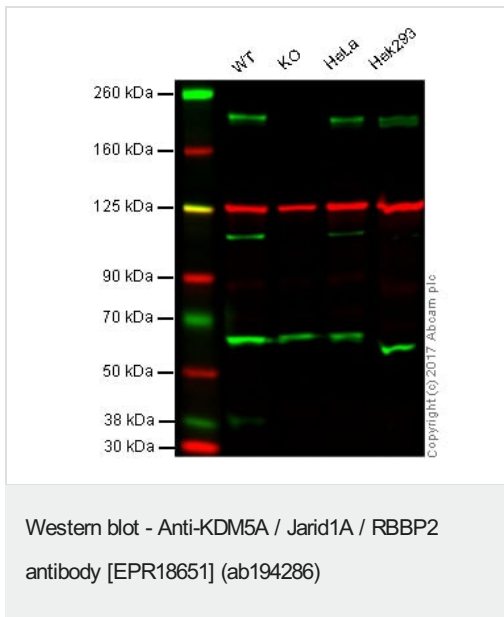
### 结构域

The GSGFP motif is required for the interaction with SUZ12.

### 细胞定位

Nucleus > nucleolus. Occupies promoters of genes involved in RNA metabolism and mitochondrial function.

## 图片



**Lane 1:** Wild-type HAP1 whole cell lysate (20 µg)

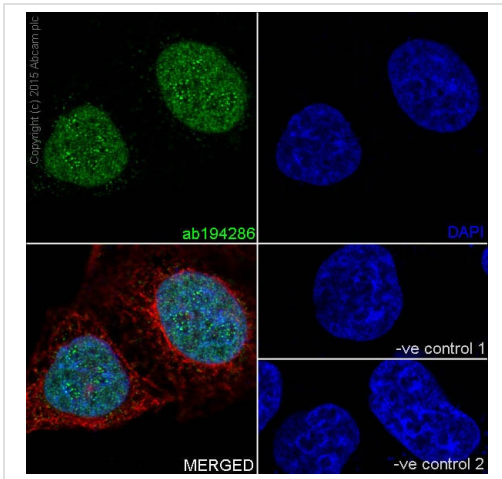
**Lane 2:** KDM5A knockout HAP1 whole cell lysate (20 µg)

**Lane 3:** HeLa whole cell lysate (20 µg)

**Lane 4:** HEK293 whole cell lysate (20 µg)

**Lanes 1 - 4:** Merged signal (red and green). Green - ab194286 observed at 240 kDa. Red - loading control, **ab18058**, observed at 130 kDa.

ab194286 was shown to specifically recognize KDM5A in wild-type HAP1 cells along with additional cross-reactive bands. No band was observed when KDM5A knockout samples were examined. Wild-type and KDM5A knockout samples were subjected to SDS-PAGE. Ab194286 and **ab18058** (Mouse anti Vinculin loading control) were incubated overnight at 4°C at 1/2500 dilution and 1/10000 dilution respectively. Blots were developed with Goat anti-Rabbit IgG H&L (IRDye® 800CW) preabsorbed (**ab216773**) and Goat anti-Mouse IgG H&L (IRDye® 680RD) preabsorbed (**ab216776**) secondary antibodies at 1/20000 dilution for 1 hour at room temperature before imaging.



Immunocytochemistry/ Immunofluorescence - Anti-KDM5A / Jarid1A / RBBP2 antibody [EPR18651] (ab194286)

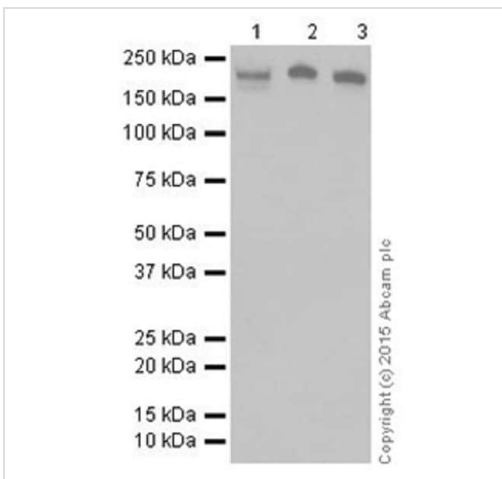
Immunofluorescent analysis of 4% paraformaldehyde-fixed, 0.1% Triton X-100 permeabilized HeLa (Human epithelial cells from cervix adenocarcinoma) cells labeling KDM5A / Jarid1A / RBBP2 with ab194286 at 1/2000 dilution, followed by Goat Anti-Rabbit IgG H&L (Alexa Fluor<sup>®</sup> 488) (**ab150077**) secondary antibody at 1/1000 dilution (green). Confocal image showing nuclear staining on HeLa cell line. The nuclear counter stain is DAPI (blue).

Tubulin is detected with Anti-alpha Tubulin mouse MAb (**ab7291**) at 1/1000 dilution, followed by Goat Anti-Mouse IgG H&L (Alexa Fluor<sup>®</sup> 594) (**ab150120**) secondary antibody at 1/1000 dilution (red).

The negative controls are as follows:

-ve control 1: ab194286 at 1/2000 dilution, followed by Goat Anti-Mouse IgG H&L (Alexa Fluor<sup>®</sup> 594) (**ab150120**) secondary at 1/1000 dilution.

-ve control 2: Anti-alpha Tubulin mouse MAb (**ab7291**) at 1/1000 dilution followed by Goat Anti-Rabbit IgG H&L (Alexa Fluor<sup>®</sup> 488) (**ab150077**) secondary at 1/1000 dilution.



Western blot - Anti-KDM5A / Jarid1A / RBBP2 antibody [EPR18651] (ab194286)

**All lanes** : Anti-KDM5A / Jarid1A / RBBP2 antibody [EPR18651] (ab194286) at 1/5000 dilution

**Lane 1** : LLC (Mouse lung carcinoma) whole cell lysate

**Lane 2** : Mouse testis lysate

**Lane 3** : HEK-293 (Human epithelial cells from embryonic kidney) whole cell lysate

Lysates/proteins at 20 µg per lane.

### Secondary

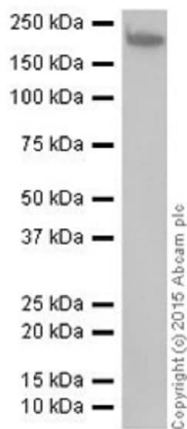
**All lanes** : Goat Anti-Rabbit IgG H&L (HRP) (**ab97051**) at 1/100000 dilution

**Predicted band size:** 192 kDa

**Observed band size:** 192 kDa

**Exposure time:** 30 seconds

Blocking/Dilution buffer: 5% NFDm/TBST.



Western blot - Anti-KDM5A / Jarid1A / RBBP2 antibody [EPR18651] (ab194286)

Anti-KDM5A / Jarid1A / RBBP2 antibody [EPR18651] (ab194286) at 1/5000 dilution + HeLa (Human epithelial cells from cervix adenocarcinoma) whole cell lysate at 20  $\mu$ g

**Secondary**

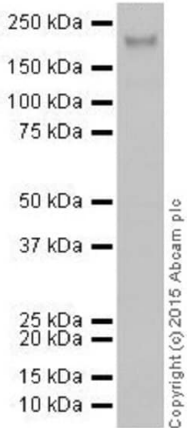
Goat Anti-Rabbit IgG H&L (HRP) ([ab97051](#)) at 1/100000 dilution

**Predicted band size:** 192 kDa

**Observed band size:** 192 kDa

**Exposure time:** 10 seconds

Blocking/Dilution buffer: 5% NFDM/TBST.



Western blot - Anti-KDM5A / Jarid1A / RBBP2 antibody [EPR18651] (ab194286)

Anti-KDM5A / Jarid1A / RBBP2 antibody [EPR18651] (ab194286) at 1/1000 dilution + NIH/3T3 (Mouse embryonic fibroblast cells) whole cell lysate at 10  $\mu$ g

**Secondary**

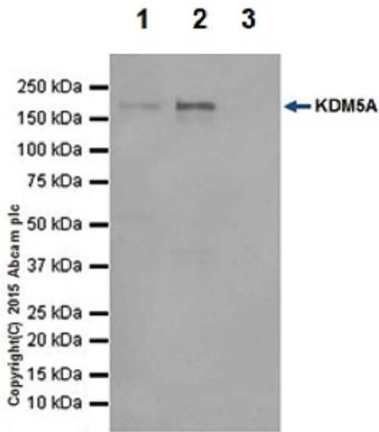
Goat Anti-Rabbit IgG H&L (HRP) ([ab97051](#)) at 1/100000 dilution

**Predicted band size:** 192 kDa

**Observed band size:** 192 kDa

**Exposure time:** 10 seconds

Blocking/Dilution buffer: 5% NFDM/TBST.



Immunoprecipitation - Anti-KDM5A / Jarid1A / RBBP2 antibody [EPR18651] (ab194286)

KDM5A / Jarid1A / RBBP2 was immunoprecipitated from 1mg of HeLa (Human epithelial cells from cervix adenocarcinoma) whole cell lysate with ab194286 at 1/100 dilution. Western blot was performed from the immunoprecipitate using ab194286 at 1/1000 dilution. VeriBlot for IP Detection Reagent (HRP) (**ab131366**), was used for detection at 1/10000 dilution.

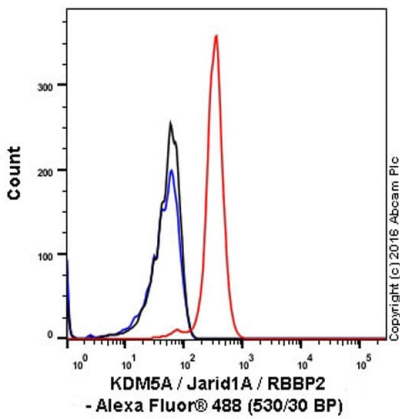
Lane 1: HeLa whole cell lysate 10ug (Input).

Lane 2: ab194286 IP in HeLa whole cell lysate.

Lane 3: Rabbit monoclonal IgG (**ab172730**) instead of ab194286 in HeLa whole cell lysate.

Blocking and dilution buffer and concentration: 5% NFDm/TBST.

Exposure time: 5 seconds.



Flow Cytometry (Intracellular) - Anti-KDM5A / Jarid1A / RBBP2 antibody [EPR18651] (ab194286)

Intracellular Flow Cytometry analysis of NIH/3T3 (mouse embryo) cells labelling KDM5A / Jarid1A / RBBP2 (red) with purified ab194286 at dilution of 1/1500. The secondary antibody used was Alexa Fluor® 488 goat-anti-rabbit IgG (1/2000). Cells were fixed with 4% paraformaldehyde and permeabilised with 90% methanol. Isotype control antibody used was Rabbit Monoclonal IgG (black). The blue line shows cells without incubation with primary antibody and secondary antibody.

### Why choose a recombinant antibody?

- 

**Research with confidence**  
Consistent and reproducible results
- 

**Long-term and scalable supply**  
Recombinant technology
- 

**Success from the first experiment**  
Confirmed specificity
- 

**Ethical standards compliant**  
Animal-free production

Anti-KDM5A / Jarid1A / RBBP2 antibody [EPR18651] (ab194286)

**Please note:** All products are "FOR RESEARCH USE ONLY. NOT FOR USE IN DIAGNOSTIC PROCEDURES"

### **Our Abpromise to you: Quality guaranteed and expert technical support**

---

- Replacement or refund for products not performing as stated on the datasheet
- Valid for 12 months from date of delivery
- Response to your inquiry within 24 hours
  
- We provide support in Chinese, English, French, German, Japanese and Spanish
- Extensive multi-media technical resources to help you
- We investigate all quality concerns to ensure our products perform to the highest standards

If the product does not perform as described on this datasheet, we will offer a refund or replacement. For full details of the Abpromise, please visit <https://www.abcam.cn/abpromise> or contact our technical team.

### **Terms and conditions**

---

- Guarantee only valid for products bought direct from Abcam or one of our authorized distributors