

### Anti-KCTD5 antibody [EPR16312] - C-terminal ab194825

**重组** RabMAb

#### 8 图像

#### 概述

产品名称	Anti-KCTD5抗体[EPR16312] - C-terminal
描述	兔单克隆抗体[EPR16312] to KCTD5 - C-terminal
宿主	Rabbit
经测试应用	<b>适用于:</b> Flow Cyt (Intra), ICC/IF, IHC-P, WB
种属反应性	<b>与反应:</b> Mouse, Rat, Human
免疫原	Synthetic peptide. This information is proprietary to Abcam and/or its suppliers.
阳性对照	HeLa, Jurkat, RAW 264.7, C6 and NIH 3T3 whole cell lysates; Human kidney and Rat liver tissues; A431 cells; Jurkat cells.
常规说明	<p>This product is a recombinant monoclonal antibody, which offers several advantages including:</p> <ul style="list-style-type: none"> <li>- High batch-to-batch consistency and reproducibility</li> <li>- Improved sensitivity and specificity</li> <li>- Long-term security of supply</li> <li>- Animal-free production</li> </ul> <p>For more information <a href="#">see here</a>.</p> <p>Our RabMAb<sup>®</sup> technology is a patented hybridoma-based technology for making rabbit monoclonal antibodies. For details on our patents, please refer to <a href="#">RabMAb<sup>®</sup> patents</a>.</p>

#### 性能

形式	Liquid
存放说明	Shipped at 4°C. Store at +4°C short term (1-2 weeks). Upon delivery aliquot. Store at -20°C long term. Avoid freeze / thaw cycle.
存储溶液	<p>pH: 7.2</p> <p>Preservative: 0.01% Sodium azide</p> <p>Constituents: 59% PBS, 40% Glycerol (glycerin, glycerine), 0.05% BSA</p>
纯度	Protein A purified
克隆	单克隆
克隆编号	EPR16312
同种型	IgG

## 应用

### The Abpromise guarantee

**Abpromise™** 承诺保证使用ab194825于以下的经测试应用

“应用说明”部分 下显示的仅为推荐的起始稀释度;实际最佳的稀释度/浓度应由使用者检定。

应用	Ab评论	说明
Flow Cyt (Intra)		1/70. <b>ab172730</b> - Rabbit monoclonal IgG, is suitable for use as an isotype control with this antibody.
ICC/IF		1/100.
IHC-P		1/50 - 1/100. Perform heat mediated antigen retrieval with Tris/EDTA buffer pH 9.0 before commencing with IHC staining protocol.
WB		1/1000. Detects a band of approximately 26 kDa (predicted molecular weight: 26 kDa).

## 靶标

### 功能

Its interaction with CUL3 suggests that it may act as a substrate adapter in some E3 ligase complex. Does not affect the function of Kv channel Kv2.1/KCNB1, Kv1.2/KCNA2, Kv4.2/KCND2 and Kv3.4/KCNC4.

### 序列相似性

Contains 1 BTB (POZ) domain.

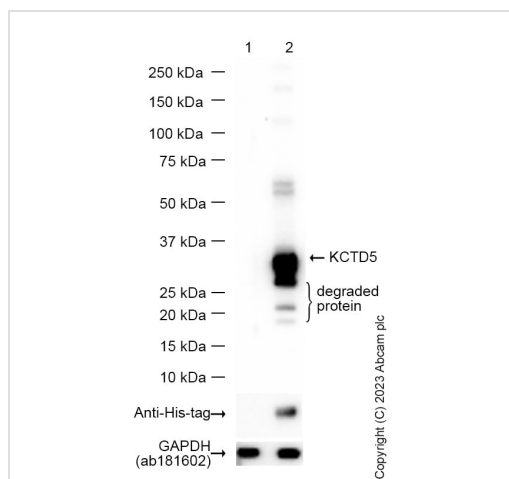
### 结构域

The BTB (POZ) domain is atypical and mediates the formation of a homopentamer instead of a homotetramer. Homopentamerization is due to the presence of 4 residues in the BTB (POZ) domain: Leu-56, Gly-100, Val-112 and Ala-118.

### 细胞定位

Cytoplasm > cytosol. Nucleus. Predominantly cytoplasmic, translocated to the nucleus upon interaction with Rep proteins.

## 图片



Western blot - Anti-KCTD5 antibody [EPR16312] - C-terminal (ab194825)

**All lanes :** Anti-KCTD5 antibody [EPR16312] - C-terminal (ab194825) at 1/1000 dilution

**Lane 1 :** Human embryonic kidney epithelial cell (HEK293T) whole cell lysate

**Lane 2 :** Human embryonic kidney epithelial cell (HEK293T) transfected with KCTD5 expression vector containing a His-tag whole cell lysate

Lysates/proteins at 20 µg per lane.

## Secondary

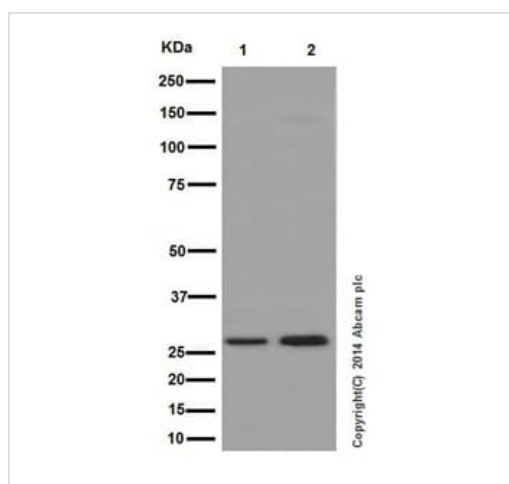
**All lanes :** Goat Anti-Rabbit IgG H&L (HRP) ([ab97051](#)) at 1/20000 dilution

**Predicted band size:** 26 kDa

**Exposure time:** 1 second

Blocking and diluting buffer and concentration: 5% NFDM /TBST.

[ab181602](#) was used as a GAPDH loading control.



Western blot - Anti-KCTD5 antibody [EPR16312] - C-terminal (ab194825)

**All lanes :** Anti-KCTD5 antibody [EPR16312] - C-terminal (ab194825) at 1/1000 dilution

**Lane 1 :** HeLa whole cell lysates

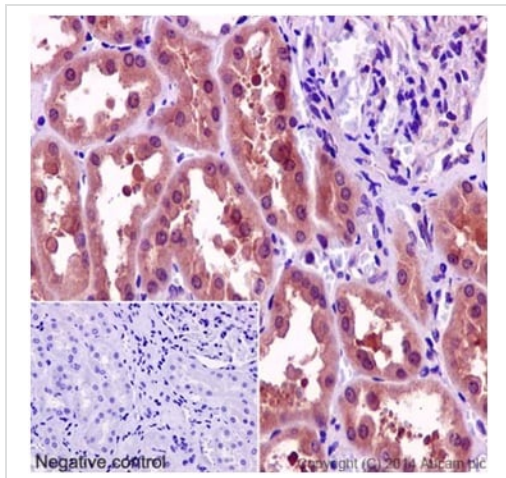
**Lane 2 :** Jurkat whole cell lysates

Lysates/proteins at 10 µg per lane.

## Secondary

**All lanes :** Goat Anti-Rabbit IgG, (H+L), Peroxidase conjugated at 1/1000 dilution

**Predicted band size:** 26 kDa



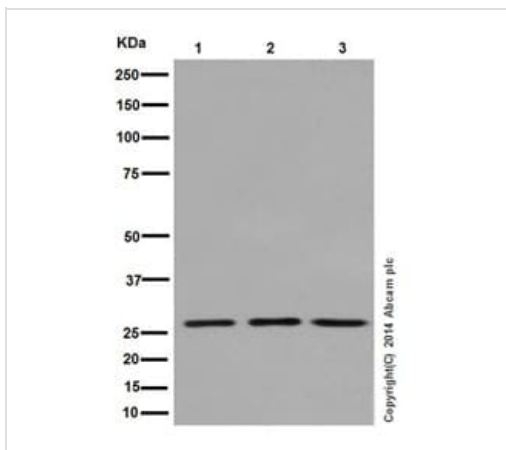
Immunohistochemistry (Formalin/PFA-fixed paraffin-embedded sections) - Anti-KCTD5 antibody [EPR16312] - C-terminal (ab194825)

Immunohistochemical analysis of paraffin-embedded Human kidney tissue labeling KCTD5 with ab194825 at 1/100 dilution (3.8 µg/ml). A Goat Anti-Rabbit IgG H&L (HRP) ([ab97051](#)) at 1/500 was used as secondary. Counterstain: Hematoxylin.

Inset image: negative control obtained using PBS instead of ab194825.

Note: Both cytoplasm and nuclear staining on human kidney tissue.

Perform heat mediated antigen retrieval with Tris/EDTA buffer pH 9.0 before commencing with IHC staining protocol.



Western blot - Anti-KCTD5 antibody [EPR16312] - C-terminal (ab194825)

**All lanes** : Anti-KCTD5 antibody [EPR16312] - C-terminal (ab194825) at 1/1000 dilution

**Lane 1** : C6 whole cell lysates

**Lane 2** : RAW 264.7 whole cell lysates

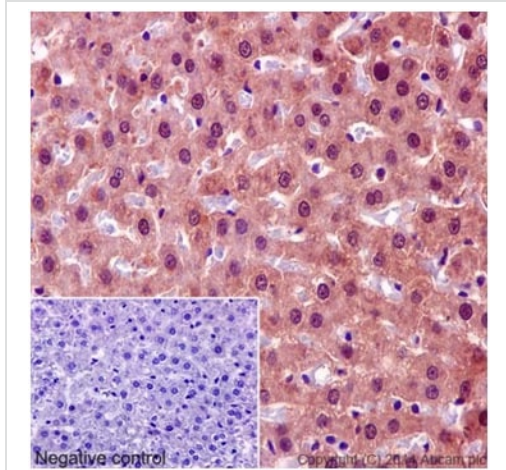
**Lane 3** : NIH 3T3 whole cell lysates

Lysates/proteins at 10 µg per lane.

### Secondary

**All lanes** : Goat Anti-Rabbit IgG, (H+L), Peroxidase conjugated at 1/1000 dilution

**Predicted band size:** 26 kDa



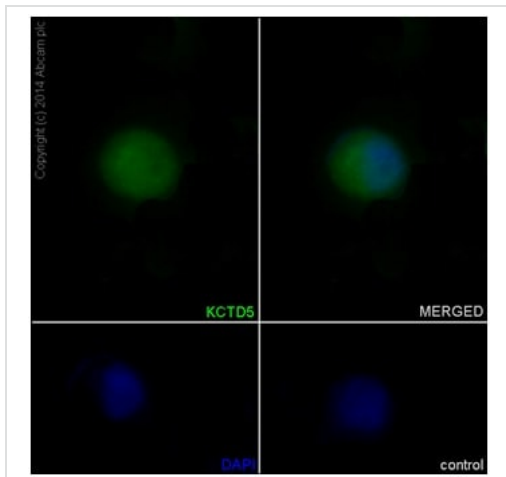
Immunohistochemistry (Formalin/PFA-fixed paraffin-embedded sections) - Anti-KCTD5 antibody [EPR16312] - C-terminal (ab194825)

Immunohistochemical analysis of paraffin-embedded rat liver tissue labeling KCTD5 with ab194825 at 1/100 dilution (3.8 µg/ml). A Goat Anti-Rabbit IgG H&L (HRP) ([ab97051](#)) at 1/500 was used as secondary. Counterstain: Hematoxylin.

Inset image: negative control obtained using PBS instead of ab194825.

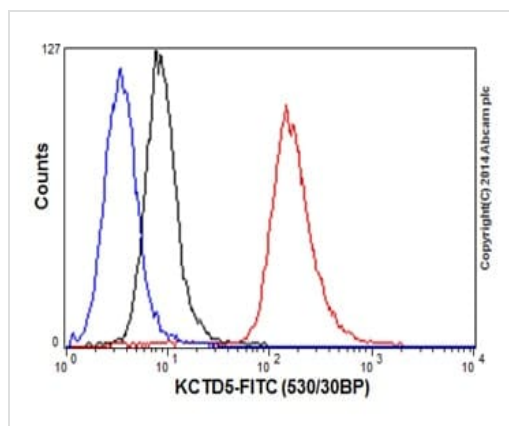
Note: Both cytoplasm and nuclear staining on rat liver tissue.

Perform heat mediated antigen retrieval with Tris/EDTA buffer pH 9.0 before commencing with IHC staining protocol.



Immunocytochemistry/ Immunofluorescence - Anti-KCTD5 antibody [EPR16312] - C-terminal (ab194825)

Immunofluorescent analysis of 4% paraformaldehyde-fixed, 0.1% Triton X-100 permeabilized A431 cells labeling KCTD5 with ab194825 at 1/100 dilution (3.8 µg/ml), followed by Goat anti-rabbit IgG (Alexa Fluor® 488) ([ab150077](#)) secondary antibody at 1/400 dilution (green). Counterstained with Dapi (blue). Both cytoplasm and nuclear staining on A431 cell line is observed.



Intracellular flow cytometric analysis of Jurkat cells labeling KCTD5 with ab194825 at 1/70 dilution (Red). A Goat anti rabbit IgG (FITC) at 1/150 dilution was used as secondary antibody. Cells were fixed with 2% paraformaldehyde. Cells without incubation with primary antibody and secondary antibody (Blue). Rabbit monoclonal IgG was used as isotype control (Black).

Flow Cytometry (Intracellular) - Anti-KCTD5 antibody  
[EPR16312] - C-terminal (ab194825)

#### Why choose a recombinant antibody?



**Research with confidence**  
Consistent and reproducible results



**Long-term and scalable supply**  
Recombinant technology



**Success from the first experiment**  
Confirmed specificity



**Ethical standards compliant**  
Animal-free production

Anti-KCTD5 antibody [EPR16312] - C-terminal  
(ab194825)

**Please note:** All products are "FOR RESEARCH USE ONLY. NOT FOR USE IN DIAGNOSTIC PROCEDURES"

#### Our Abpromise to you: Quality guaranteed and expert technical support

- Replacement or refund for products not performing as stated on the datasheet
- Valid for 12 months from date of delivery
- Response to your inquiry within 24 hours
- We provide support in Chinese, English, French, German, Japanese and Spanish
- Extensive multi-media technical resources to help you

- We investigate all quality concerns to ensure our products perform to the highest standards

If the product does not perform as described on this datasheet, we will offer a refund or replacement. For full details of the Abpromise, please visit <https://www.abcam.cn/abpromise> or contact our technical team.

### **Terms and conditions**

---

- Guarantee only valid for products bought direct from Abcam or one of our authorized distributors