

Anti-KAT13A / SRC1 antibody ab10308

★★★★★ [3 Abreviews](#) [1 References](#) [2 图像](#)

概述

产品名称	Anti-KAT13A / SRC1抗体
描述	兔多克隆抗体to KAT13A / SRC1
宿主	Rabbit
经测试应用	适用于: WB, IP
种属反应性	与反应: Human 预测可用于: Rat, Horse, Chimpanzee, Rhesus monkey, Gorilla, Chinese hamster, Elephant



免疫原	Synthetic peptide within Human KAT13A/ SRC1 aa 1400-1500 (C terminal). The exact immunogen sequence used to generate this antibody is proprietary information. If additional detail on the immunogen is needed to determine the suitability of the antibody for your needs, please contact our Scientific Support team to discuss your requirements. Database link: Q15788
-----	---

阳性对照	Nuclear extract from HeLa cells.
------	----------------------------------

常规说明	<p>The Life Science industry has been in the grips of a reproducibility crisis for a number of years. Abcam is leading the way in addressing this with our range of recombinant monoclonal antibodies and knockout edited cell lines for gold-standard validation. Please check that this product meets your needs before purchasing.</p> <p>If you have any questions, special requirements or concerns, please send us an inquiry and/or contact our Support team ahead of purchase. Recommended alternatives for this product can be found below, along with publications, customer reviews and Q&As</p>
------	---

性能

形式	Liquid
存放说明	Shipped at 4°C. Upon delivery aliquot and store at -20°C. Avoid freeze / thaw cycles.
存储溶液	pH: 7 Preservative: 0.1% Sodium azide Constituents: 0.021% PBS, 1.764% Sodium citrate, 1.815% Tris
纯度	Immunogen affinity purified
纯化说明	Antibodies were affinity purified using the peptide immobilized on solid support. Antibody concentration was determined by extinction coefficient: absorbance of 1.4 at 280 nm equals 1.0

	mg of IgG.
克隆	多克隆
同种型	IgG

应用

The Abpromise guarantee **Abpromise™**承诺保证使用ab10308于以下的经测试应用

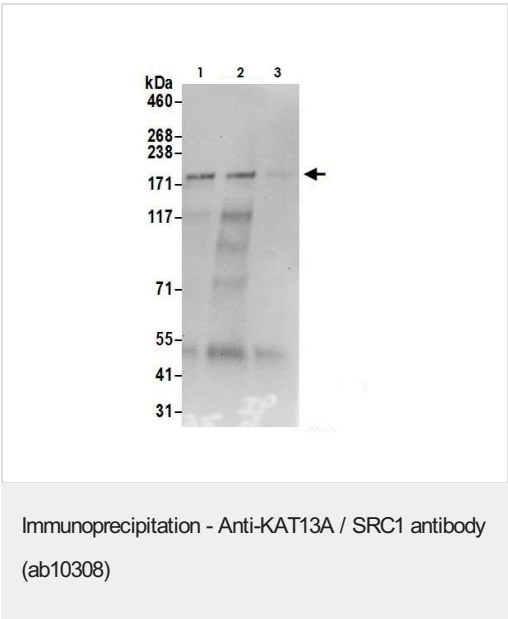
“应用说明”部分 下显示的仅为推荐的起始稀释度;实际最佳的稀释度/浓度应由使用者检定。

应用	Ab评论	说明
WB		1/1000 - 1/5000. Predicted molecular weight: 156 kDa.
IP	★★★★★ (3)	Use at 2-10 µg/mg of lysate.

靶标

功能	Nuclear receptor coactivator that directly binds nuclear receptors and stimulates the transcriptional activities in a hormone-dependent fashion. Involved in the coactivation of different nuclear receptors, such as for steroids (PGR, GR and ER), retinoids (RXRs), thyroid hormone (TRs) and prostanoids (PPARs). Also involved in coactivation mediated by STAT3, STAT5A, STAT5B and STAT6 transcription factors. Displays histone acetyltransferase activity toward H3 and H4; the relevance of such activity remains however unclear. Plays a central role in creating multisubunit coactivator complexes that act via remodeling of chromatin, and possibly acts by participating in both chromatin remodeling and recruitment of general transcription factors. Required with NCOA2 to control energy balance between white and brown adipose tissues. Required for mediating steroid hormone response. Isoform 2 has a higher thyroid hormone-dependent transactivation activity than isoform 1 and isoform 3.
组织特异性	Widely expressed.
疾病相关	Note=A chromosomal aberration involving NCOA1 is a cause of rhabdomyosarcoma. Translocation t(2;2)(q35;p23) with PAX3 generates the NCOA1-PAX3 oncogene consisting of the N-terminus part of PAX3 and the C-terminus part of NCOA1. The fusion protein acts as a transcriptional activator. Rhabdomyosarcoma is the most common soft tissue carcinoma in childhood, representing 5-8% of all malignancies in children.
序列相似性	Belongs to the SRC/p160 nuclear receptor coactivator family. Contains 1 basic helix-loop-helix (bHLH) domain. Contains 1 PAS (PER-ARNT-SIM) domain.
结构域	The C-terminal (1107-1441) part mediates the histone acetyltransferase (HAT) activity. Contains 7 Leu-Xaa-Xaa-Leu-Leu (LXXLL) motifs. LXXLL motifs 3, 4 and 5 are essential for the association with nuclear receptors. LXXLL motif 7, which is not present in isoform 2, increases the affinity for steroid receptors in vitro.
翻译后修饰	Sumoylated; sumoylation increases its interaction with PGR and prolongs its retention in the nucleus. It does not prevent its ubiquitination and does not exert a clear effect on the stability of the protein. Ubiquitinated; leading to proteasome-mediated degradation. Ubiquitination and sumoylation take place at different sites. Phosphorylated upon DNA damage, probably by ATM or ATR.

图片

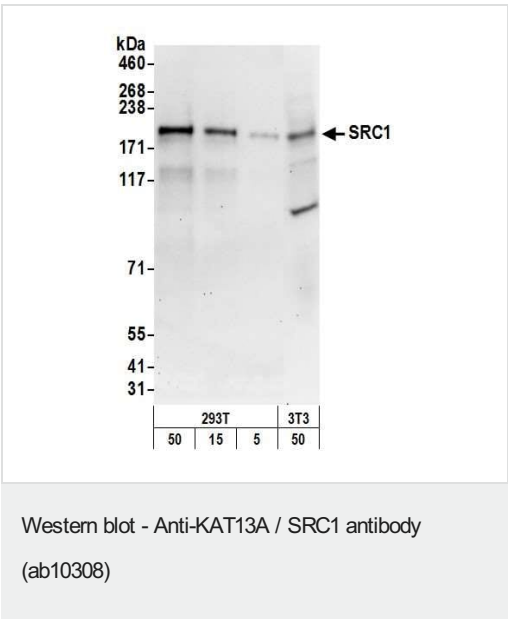


Detection of KAT13A / SRC1 by western blot of immunoprecipitates.

Samples: Lane 1 and 2: Whole cell lysate (0.5 or 1.0 mg per IP reaction; 20% of IP loaded) from HEK293T (human epithelial cell line from embryonic kidney transformed with large T antigen) cells prepared using NETN lysis buffer. Lane 3: Control IgG.

Antibodies: ab10308 (lot 2, lane 2) used for IP at 6 μ g per reaction. KAT13A / SRC1 was also immunoprecipitated by a previous lot of this antibody (lot 1, lane 1). For blotting immunoprecipitated KAT13A / SRC1, ab10308 was used at 0.4 μ g/mL.

Detection: Chemiluminescence with an exposure time of 30 seconds.



All lanes : Anti-KAT13A / SRC1 antibody (ab10308) at 0.1 μ g/mL

Lane 1 : HEK293T whole cell lysate at 50 μ g

Lane 2 : HEK293T whole cell lysate at 15 μ g

Lane 3 : HEK293T whole cell lysate at 5 μ g

Lane 4 : NIH/3T3 whole cell lysate at 50 μ g

Predicted band size: 156 kDa

Exposure time: 30 seconds

Please note: All products are "FOR RESEARCH USE ONLY. NOT FOR USE IN DIAGNOSTIC PROCEDURES"

Our Abpromise to you: Quality guaranteed and expert technical support

- Replacement or refund for products not performing as stated on the datasheet
- Valid for 12 months from date of delivery
- Response to your inquiry within 24 hours
- We provide support in Chinese, English, French, German, Japanese and Spanish
- Extensive multi-media technical resources to help you

- We investigate all quality concerns to ensure our products perform to the highest standards

If the product does not perform as described on this datasheet, we will offer a refund or replacement. For full details of the Abpromise, please visit <https://www.abcam.cn/abpromise> or contact our technical team.

Terms and conditions

- Guarantee only valid for products bought direct from Abcam or one of our authorized distributors