

Anti-Kappa light chain antibody [KLC264] ab190760

2 图像

概述

产品名称	Anti-Kappa light chain抗体[KLC264]
描述	小鼠单克隆抗体[KLC264] to Kappa light chain
宿主	Mouse
经测试应用	适用于: WB, IHC-P
种属反应性	与反应: Human
免疫原	Recombinant full length protein corresponding to Human Kappa light chain. Recombinant full length human Kappa light chain corresponding to: Ig kappa chain V-I region HK101 (amino acids 1-117; P01601) and Ig kappa chain C (amino acids 1-106; P01834).
阳性对照	IHC-P: Human tonsil tissue; WB: Human spleen tissue lysate.
常规说明	<p>The Life Science industry has been in the grips of a reproducibility crisis for a number of years. Abcam is leading the way in addressing this with our range of recombinant monoclonal antibodies and knockout edited cell lines for gold-standard validation. Please check that this product meets your needs before purchasing.</p> <p>If you have any questions, special requirements or concerns, please send us an inquiry and/or contact our Support team ahead of purchase. Recommended alternatives for this product can be found below, along with publications, customer reviews and Q&As</p>

性能

形式	Liquid
存放说明	Shipped at 4°C. Store at +4°C short term (1-2 weeks). Upon delivery aliquot. Store at -20°C long term. Avoid freeze / thaw cycle.
存储溶液	<p>pH: 7.2</p> <p>Preservative: 0.05% Sodium azide</p> <p>Constituents: 0.05% BSA, PBS</p> <p>It contains BSA and sodium azide.</p>
纯度	Protein A/G purified
纯化说明	200ug/ml of Ab purified from Bioreactor Concentrate by Protein A/G
克隆	单克隆
克隆编号	KLC264

同种型	IgG1
轻链类型	kappa

应用

The Abpromise guarantee

Abpromise™承诺保证使用ab190760于以下的经测试应用

“应用说明”部分 下显示的仅为推荐的起始稀释度;实际最佳的稀释度/浓度应由使用者检定。

应用	Ab评论	说明
WB		Use a concentration of 1 - 2 µg/ml. Predicted molecular weight: 25 kDa.
IHC-P		Use a concentration of 1 - 2 µg/ml. Perform heat mediated antigen retrieval with Tris/EDTA buffer pH 9.0 before commencing with IHC staining protocol.

靶标

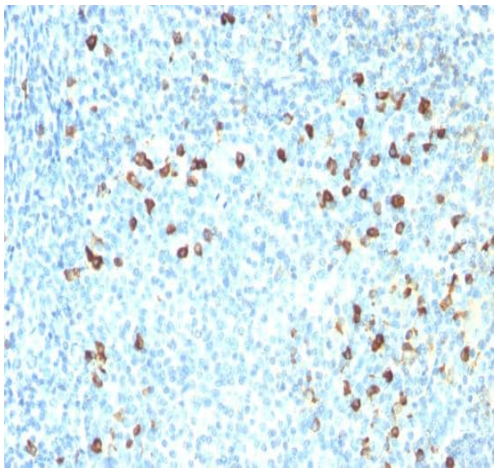
相关性

Immunoglobulins belong to a group of related glyco proteins which make up 20% of serum proteins. Antigens and immunoglobulins react to confer immunity to individuals. Immunoglobulins have similar structures of two identical heavy chains and two identical light chains. Both the heavy chains and the light chains are divided into constant and variable regions. The constant regions have the same amino acid sequences between all the immunoglobulin classes. The variable regions have approximately 110 amino acids with high sequence variability. The amino acid sequence of the heavy chain determines the class of an immunoglobulin. The five types of immunoglobulin heavy chains are known as: IgG, IgA, IgM, IgD, and IgE. IgG is divided into four subclasses, and IgA is divided into two subclasses. In serum IgA and IgG are monomers with a single 4 polypeptide unit; while, IgM is a pen tamer. IgA may also form polymers. Kappa light chain antibody can be used for the identification of leukemias, plasmacytomas and certain non Hodgkin's lymphomas. Kappa light chain contains one immunoglobulin like domain. The EU sequence has the INV allotypic marker, Ala 45 and Val 83. The ROY sequence has the INV allotypic marker, Ala 45 and Leu 83.

细胞定位

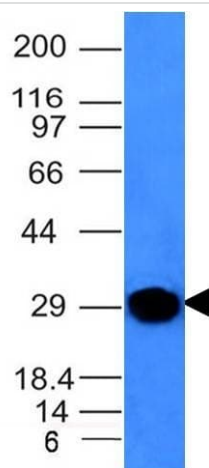
Cytoplasmic and Secreted

图片



Immunohistochemical analysis of paraffin-embedded Human tonsil tissue, labeling Kappa light chain using ab190760 at 1 µg/ml. Note cell membrane and cytoplasmic staining.

Immunohistochemistry (Formalin/PFA-fixed paraffin-embedded sections) - Anti-Kappa light chain antibody [KLC264] (ab190760)



Anti-Kappa light chain antibody [KLC264] (ab190760) at 2 µg/ml + Human spleen tissue lysate

Predicted band size: 25 kDa

Western blot - Anti-Kappa light chain antibody [KLC264] (ab190760)

Please note: All products are "FOR RESEARCH USE ONLY. NOT FOR USE IN DIAGNOSTIC PROCEDURES"

Our Abpromise to you: Quality guaranteed and expert technical support

- Replacement or refund for products not performing as stated on the datasheet
- Valid for 12 months from date of delivery
- Response to your inquiry within 24 hours
- We provide support in Chinese, English, French, German, Japanese and Spanish
- Extensive multi-media technical resources to help you
- We investigate all quality concerns to ensure our products perform to the highest standards

If the product does not perform as described on this datasheet, we will offer a refund or replacement. For full details of the Abpromise, please visit <https://www.abcam.cn/abpromise> or contact our technical team.

Terms and conditions

- Guarantee only valid for products bought direct from Abcam or one of our authorized distributors