

Anti-Kappa light chain antibody [EPR5367-8] ab124727

重组 RabMAb

2 References 5 图像

概述	
产品名称	Anti-Kappa light chain抗体[EPR5367-8]
描述	兔单克隆抗体[EPR5367-8] to Kappa light chain
宿主	Rabbit
经测试应用	适用于: WB, IP, ELISA, IHC-P
种属反应性	与反应: Human
免疫原	Full length native protein (purified) corresponding to Human Kappa light chain. Purified Human IgA.
阳性对照	IP: Human spleen lysate. WB: Human tonsil, plasma and spleen lysate; IHC: Human tonsil lysate.
常规说明	<p>This product is a recombinant monoclonal antibody, which offers several advantages including:</p> <ul style="list-style-type: none"><li>- High batch-to-batch consistency and reproducibility</li><li>- Improved sensitivity and specificity</li><li>- Long-term security of supply</li><li>- Animal-free production</li></ul> <p>For more information <a href="#">see here</a>.</p> <p>Our RabMAb<sup>®</sup> technology is a patented hybridoma-based technology for making rabbit monoclonal antibodies. For details on our patents, please refer to <a href="#">RabMAb<sup>®</sup> patents</a>.</p>
性能	
形式	Liquid
存放说明	Shipped at 4°C. Store at +4°C short term (1-2 weeks). Upon delivery aliquot. Store at -20°C. Stable for 12 months at -20°C.
存储溶液	pH: 7.20 Preservative: 0.01% Sodium azide Constituents: 40% Glycerol (glycerin, glycerine), 59% PBS, 0.05% BSA
纯度	Protein A purified
克隆	单克隆
克隆编号	EPR5367-8
同种型	IgG

## 应用

### The Abpromise guarantee

**Abpromise™**承诺保证使用ab124727于以下的经测试应用

“应用说明”部分 下显示的仅为推荐的起始稀释度;实际最佳的稀释度/浓度应由使用者检定。

应用	Ab评论	说明
WB		1/10000 - 1/50000. Predicted molecular weight: 25 kDa.
IP		1/10 - 1/100.
ELISA		1/16000.
IHC-P		1/5000. Perform heat mediated antigen retrieval with citrate buffer pH 6 before commencing with IHC staining protocol. antigen retrieval is recommended.

## 靶标

### 相关性

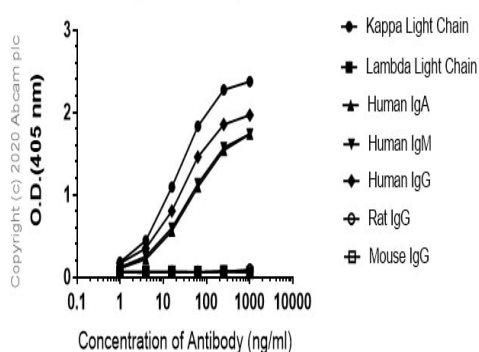
Immunoglobulins belong to a group of related glyco proteins which make up 20% of serum proteins. Antigens and immunoglobulins react to confer immunity to individuals. Immunoglobulins have similar structures of two identical heavy chains and two identical light chains. Both the heavy chains and the light chains are divided into constant and variable regions. The constant regions have the same amino acid sequences between all the immunoglobulin classes. The variable regions have approximately 110 amino acids with high sequence variability. The amino acid sequence of the heavy chain determines the class of an immunoglobulin. The five types of immunoglobulin heavy chains are known as: IgG, IgA, IgM, IgD, and IgE. IgG is divided into four subclasses, and IgA is divided into two subclasses. In serum IgA and IgG are monomers with a single 4 polypeptide unit; while, IgM is a pentamer. IgA may also form polymers. Kappa light chain antibody can be used for the identification of leukemias, plasmacytomas and certain non Hodgkin's lymphomas. Kappa light chain contains one immunoglobulin like domain. The EU sequence has the INV allotypic marker, Ala 45 and Val 83. The ROY sequence has the INV allotypic marker, Ala 45 and Leu 83.

### 细胞定位

Cytoplasmic and Secreted

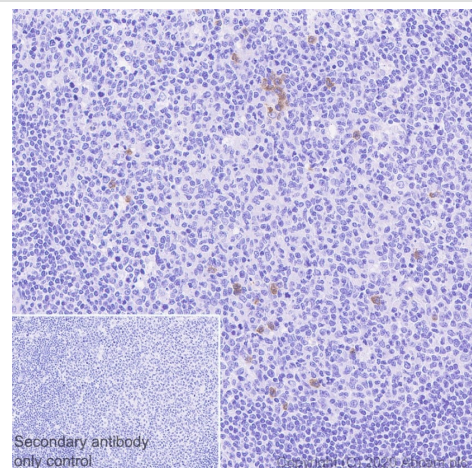
## 图片

Indirect ELISA antibody dose-response curve  
antigen at 1000 ng/ml



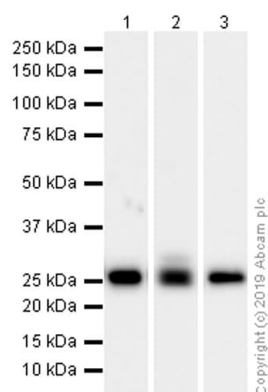
ELISA - Anti-Kappa light chain antibody [EPR5367-8] (ab124727)

ELISA analysis of Kappa Light Chains, Lambda Light Chains, Human IgA, Human IgM, Human IgG, Rat IgG, and Mouse IgG at 1000ng/mL using purified ab124727. Alkaline Phosphatase-conjugated AffiniPure Goat Anti-Rabbit IgG (H+L) was used as the secondary antibody at 1/2500 dilution.



Immunohistochemistry (Formalin/PFA-fixed paraffin-embedded sections) - Anti-Kappa light chain antibody [EPR5367-8] (ab124727)

Immunohistochemistry (Formalin/PFA-fixed paraffin-embedded sections) analysis of Human tonsil tissue sections labeling Kappa light chain with purified ab124727 at 1/5000 dilution (0.06 µg/mL). Heat mediated antigen retrieval using Bond™ Epitope Retrieval Solution 2 (pH 9.0). The immunostaining was performed on a Leica Biosystems BOND® RX instrument. Rabbit specific IHC polymer detection kit HRP/DAB (**ab209101**) was used as the secondary antibody. Negative control: PBS instead of the primary antibody. Hematoxylin was used as a counterstain.



Western blot - Anti-Kappa light chain antibody [EPR5367-8] (ab124727)

**All lanes** : Anti-Kappa light chain antibody [EPR5367-8] (ab124727) at 1/5000 dilution (Purified)

**Lane 1** : Human tonsil lysate

**Lane 2** : Human plasma lysate

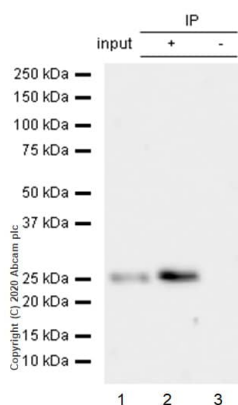
**Lane 3** : Human spleen lysate

Lysates/proteins at 15 µg per lane.

### Secondary

**All lanes** : Goat Anti-Rabbit IgG (HRP) with minimal cross-reactivity with human IgG at 1/2000 dilution

**Predicted band size:** 25 kDa



Immunoprecipitation - Anti-Kappa light chain antibody [EPR5367-8] (ab124727)

Purified ab124727 at 1/50 dilution (2µg) immunoprecipitating Kappa light chain in Human spleen lysate.

Lane 1 (input): Human spleen lysate 10µg

Lane 2 (+): ab124727 + Human spleen lysate.

Lane 3 (-): Rabbit monoclonal IgG (**ab172730**) instead of ab124727 in Human spleen lysate.

VeriBlot for IP Detection Reagent (HRP) (**ab131366**) (1/1000 dilution) was used for Western blotting.

Blocking Buffer and concentration: 5% NFDm/TBST.

Diluting buffer and concentration: 5% NFDm/TBST.

Observed band size: 25 kDa

### Why choose a recombinant antibody?



**Research with confidence**  
Consistent and reproducible results



**Long-term and scalable supply**  
Recombinant technology



**Success from the first experiment**  
Confirmed specificity



**Ethical standards compliant**  
Animal-free production

Anti-Kappa light chain antibody [EPR5367-8]  
(ab124727)

**Please note:** All products are "FOR RESEARCH USE ONLY. NOT FOR USE IN DIAGNOSTIC PROCEDURES"

### Our Abpromise to you: Quality guaranteed and expert technical support

- Replacement or refund for products not performing as stated on the datasheet
- Valid for 12 months from date of delivery
- Response to your inquiry within 24 hours
- We provide support in Chinese, English, French, German, Japanese and Spanish
- Extensive multi-media technical resources to help you
- We investigate all quality concerns to ensure our products perform to the highest standards

If the product does not perform as described on this datasheet, we will offer a refund or replacement. For full details of the Abpromise, please visit <https://www.abcam.cn/abpromise> or contact our technical team.

### Terms and conditions

- Guarantee only valid for products bought direct from Abcam or one of our authorized distributors