

Anti-Kallikrein 7/KLK7 antibody ab96710

[1 References](#) [2 图像](#)

概述

产品名称	Anti-Kallikrein 7/KLK7抗体
描述	兔多克隆抗体to Kallikrein 7/KLK7
宿主	Rabbit
经测试应用	适用于: WB, IHC-P
种属反应性	与反应: Human
免疫原	Recombinant fragment corresponding to Human Kallikrein 7/KLK7 aa 1-237.
阳性对照	Transfected 293T whole cell lysate, Cal27 tissue
常规说明	<p>The Life Science industry has been in the grips of a reproducibility crisis for a number of years. Abcam is leading the way in addressing this with our range of recombinant monoclonal antibodies and knockout edited cell lines for gold-standard validation. Please check that this product meets your needs before purchasing.</p> <p>If you have any questions, special requirements or concerns, please send us an inquiry and/or contact our Support team ahead of purchase. Recommended alternatives for this product can be found below, along with publications, customer reviews and Q&As</p>

性能

形式	Liquid
存放说明	Shipped at 4°C. Upon delivery aliquot and store at -20°C or -80°C. Avoid repeated freeze / thaw cycles.
存储溶液	<p>pH: 7.00</p> <p>Preservative: 0.025% Proclin 300</p> <p>Constituents: 79% PBS, 20% Glycerol (glycerin, glycerine)</p>
纯度	Immunogen affinity purified
克隆	多克隆
同种型	IgG

应用

The Abpromise guarantee

Abpromise™ 承诺保证使用ab96710于以下的经测试应用

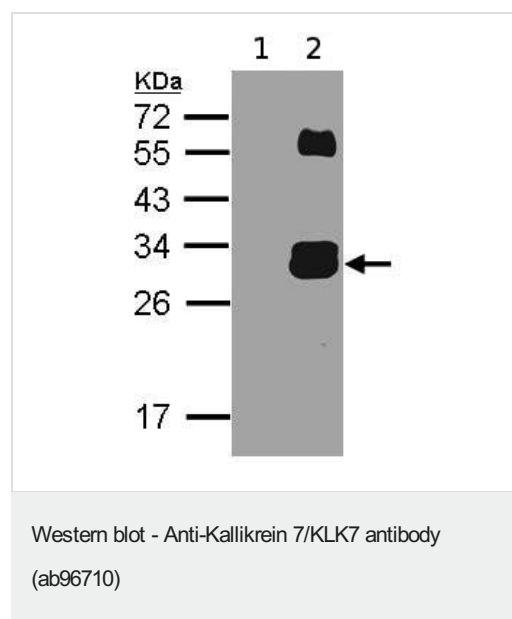
“应用说明”部分 下显示的仅为推荐的起始稀释度;实际最佳的稀释度/浓度应由使用者检定。

应用	Ab评论	说明
WB		1/500 - 1/3000. Predicted molecular weight: 28 kDa.
IHC-P		1/100.

靶标

功能	May catalyze the degradation of intercellular cohesive structures in the cornified layer of the skin in the continuous shedding of cells from the skin surface. Specific for amino acid residues with aromatic side chains in the P1 position. SCCE cleaves insulin B chain at '6-Leu-Cys-7', '16-Tyr-Leu-17', '25-Phe-Tyr-26' and '26-Tyr-Thr-27'. Could play a role in the activation of precursors to inflammatory cytokines.
组织特异性	Abundantly expressed in the skin and is expressed by keratinocytes in the epidermis. Also expressed in the brain, mammary gland, cerebellum, spinal cord and kidney. Lower levels in salivary glands, uterus, thymus, thyroid, placenta, trachea and testis. Up-regulated in ovarian carcinoma, especially late-stage serous carcinoma, compared with normal ovaries and benign adenomas (at protein level).
序列相似性	Belongs to the peptidase S1 family. Kallikrein subfamily. Contains 1 peptidase S1 domain.
细胞定位	Secreted. In ovarian carcinoma, secreted and also observed at the apical membrane and in cytoplasm at the invasive front.

图片



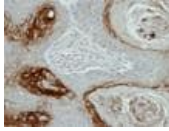
All lanes : Anti-Kallikrein 7/KLK7 antibody (ab96710) at 1/500 dilution

Lane 1 : Non-transfected 293T lysate

Lane 2 : Kallikrein 7/KLK7 transfected 293T lysate

Predicted band size: 28 kDa

12% SDS-PAGE



Immunohistochemical analysis of paraffin-embedded Cal27 using ab96710 at 1/100 dilution.

Immunohistochemistry (Formalin/PFA-fixed paraffin-embedded sections) - Anti-Kallikrein 7/CLK7 antibody (ab96710)

Please note: All products are "FOR RESEARCH USE ONLY. NOT FOR USE IN DIAGNOSTIC PROCEDURES"

Our Abpromise to you: Quality guaranteed and expert technical support

- Replacement or refund for products not performing as stated on the datasheet
- Valid for 12 months from date of delivery
- Response to your inquiry within 24 hours
- We provide support in Chinese, English, French, German, Japanese and Spanish
- Extensive multi-media technical resources to help you
- We investigate all quality concerns to ensure our products perform to the highest standards

If the product does not perform as described on this datasheet, we will offer a refund or replacement. For full details of the Abpromise, please visit <https://www.abcam.cn/abpromise> or contact our technical team.

Terms and conditions

- Guarantee only valid for products bought direct from Abcam or one of our authorized distributors