


Anti-K Cadherin/CDH6 antibody ab197845

★★★★★ [2 Abreviews](#) [2 References](#) [2 图像](#)

概述

产品名称	Anti-K Cadherin/CDH6抗体
描述	兔多克隆抗体to K Cadherin/CDH6
宿主	Rabbit
经测试应用	适用于: WB, IHC-P
种属反应性	与反应: Human 预测可用于: Mouse, Rat 
免疫原	Fusion protein corresponding to Human K Cadherin/CDH6 (internal sequence). (BC000019) Database link: P55285-2
阳性对照	HeLa, A549 and HT29 cell lysates; Human liver cancer tissue lysate. Human brain tissue.
常规说明	<p>The Life Science industry has been in the grips of a reproducibility crisis for a number of years. Abcam is leading the way in addressing this with our range of recombinant monoclonal antibodies and knockout edited cell lines for gold-standard validation. Please check that this product meets your needs before purchasing.</p> <p>If you have any questions, special requirements or concerns, please send us an inquiry and/or contact our Support team ahead of purchase. Recommended alternatives for this product can be found below, along with publications, customer reviews and Q&As</p>

性能

形式	Liquid
存放说明	Shipped at 4°C. Store at +4°C short term (1-2 weeks). Upon delivery aliquot. Store at -20°C long term. Avoid freeze / thaw cycle.
存储溶液	pH: 7.4 Preservative: 0.05% Sodium azide Constituents: 50% Glycerol (glycerin, glycerine), 49% PBS
纯度	Immunogen affinity purified
克隆	多克隆
同种型	IgG

应用

The Abpromise guarantee

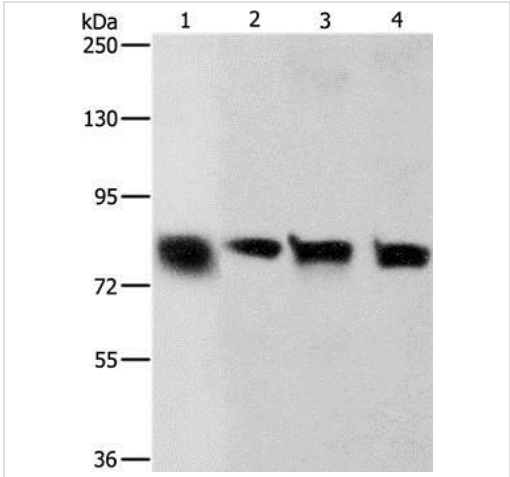
Abpromise™承诺保证使用ab197845于以下的经测试应用

“应用说明”部分 下显示的仅为推荐的起始稀释度;实际最佳的稀释度/浓度应由使用者检定。

应用	Ab评论	说明
WB	★★★★★ (1)	1/500 - 1/2000. Predicted molecular weight: 74 kDa.
IHC-P		1/50 - 1/200.

靶标	
功能	Cadherins are calcium dependent cell adhesion proteins. They preferentially interact with themselves in a homophilic manner in connecting cells; cadherins may thus contribute to the sorting of heterogeneous cell types.
组织特异性	Highly expressed in brain, cerebellum, and kidney. Lung, pancreas, and gastric mucosa show a weak expression. Also expressed in certain liver and kidney carcinomas.
序列相似性	Contains 5 cadherin domains.
细胞定位	Cell membrane.

图片



Western blot - Anti-K Cadherin/CDH6 antibody (ab197845)

All lanes : Anti-K Cadherin/CDH6 antibody (ab197845) at 1/500 dilution

Lane 1 : HeLa cell lysate

Lane 2 : A549 cell lysate

Lane 3 : Human liver cancer tissue lysate

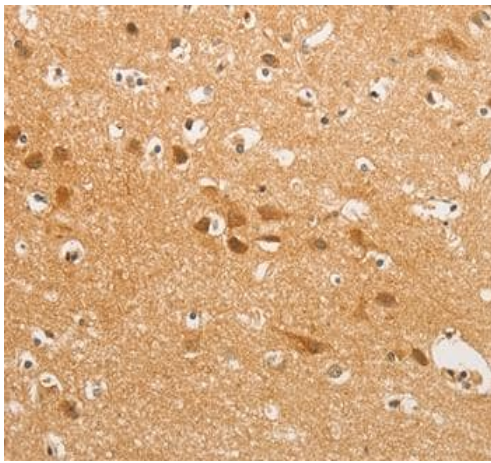
Lane 4 : HT29 cell lysate

Lysates/proteins at 40 µg per lane.

Predicted band size: 74 kDa

Exposure time: 2 minutes

Gel: 8%SDS-PAGE



Immunohistochemical analysis of paraffin-embedded Human brain tissue labeling K Cadherin/CDH6 with ab197845 at 1/50 dilution.

Immunohistochemistry (Formalin/PFA-fixed paraffin-embedded sections) - Anti-K Cadherin/CDH6 antibody (ab197845)

Please note: All products are "FOR RESEARCH USE ONLY. NOT FOR USE IN DIAGNOSTIC PROCEDURES"

Our Abpromise to you: Quality guaranteed and expert technical support

- Replacement or refund for products not performing as stated on the datasheet
- Valid for 12 months from date of delivery
- Response to your inquiry within 24 hours
- We provide support in Chinese, English, French, German, Japanese and Spanish
- Extensive multi-media technical resources to help you
- We investigate all quality concerns to ensure our products perform to the highest standards

If the product does not perform as described on this datasheet, we will offer a refund or replacement. For full details of the Abpromise, please visit <https://www.abcam.cn/abpromise> or contact our technical team.

Terms and conditions

- Guarantee only valid for products bought direct from Abcam or one of our authorized distributors