

Anti-JAB1 antibody ab12323

★★★★★ [2 Abreviews](#) [6 References](#) [3 图像](#)

概述

产品名称	Anti-JAB1抗体
描述	兔多克隆抗体to JAB1
宿主	Rabbit
经测试应用	适用于: IHC-P, WB
种属反应性	与反应: Mouse, Human 预测可用于: Rat, Rabbit, Horse, Chicken, Guinea pig, Cow, Dog, Turkey, Pig, Xenopus laevis, Chimpanzee, Zebrafish, Rhesus monkey, Orangutan, Xenopus tropicalis 
免疫原	Immunogen was a synthetic peptide, which represented a c-terminal domain of human JAB1 (LocusLink ID 10987).
常规说明	Centrifuge tube to remove product from lid. The Life Science industry has been in the grips of a reproducibility crisis for a number of years. Abcam is leading the way in addressing this with our range of recombinant monoclonal antibodies and knockout edited cell lines for gold-standard validation. Please check that this product meets your needs before purchasing. If you have any questions, special requirements or concerns, please send us an inquiry and/or contact our Support team ahead of purchase. Recommended alternatives for this product can be found below, along with publications, customer reviews and Q&As

性能

形式	Liquid
存放说明	Shipped at 4°C. Upon delivery aliquot and store at -20°C. Avoid freeze / thaw cycles.
存储溶液	pH: 7 Preservative: 0.1% Sodium azide Constituents: 0.021% PBS, 1.764% Sodium citrate, 1.815% Tris
纯度	Immunogen affinity purified
纯化说明	Purified using the peptide immobilized on solid support.
克隆	多克隆
同种型	IgG

应用

The Abpromise guarantee **Abpromise™**承诺保证使用ab12323于以下的经测试应用

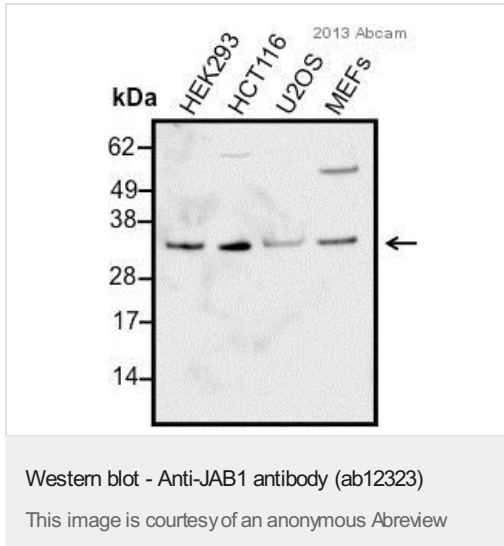
“应用说明”部分 下显示的仅为推荐的起始稀释度;实际最佳的稀释度/浓度应由使用者检定。

应用	Ab评论	说明
IHC-P		1/250 - 1/2000. Perform heat mediated antigen retrieval with Tris/EDTA buffer pH 9.0 before commencing with IHC staining protocol.
WB	★★★★★ (2)	1/5000 - 1/25000. Detects a band of approximately 33, 36 kDa (predicted molecular weight: 40 kDa).

靶标

功能	Probable protease subunit of the COP9 signalosome complex (CSN), a complex involved in various cellular and developmental processes. The CSN complex is an essential regulator of the ubiquitin (Ubl) conjugation pathway by mediating the deneddylation of the cullin subunits of the SCF-type E3 ligase complexes, leading to decrease the Ubl ligase activity of SCF-type complexes such as SCF, CSA or DDB2. The complex is also involved in phosphorylation of p53/TP53, c-jun/JUN, IκappaBα/NFκBIA, ITPK1 and IRF8, possibly via its association with CK2 and PKD kinases. CSN-dependent phosphorylation of TP53 and JUN promotes and protects degradation by the Ubl system, respectively. In the complex, it probably acts as the catalytic center that mediates the cleavage of Nedd8 from cullins. It however has no metalloprotease activity by itself and requires the other subunits of the CSN complex. Interacts directly with a large number of proteins that are regulated by the CSN complex, confirming a key role in the complex.
序列相似性	Belongs to the peptidase M67A family. CSN5 subfamily. Contains 1 MPN (JAB/Mov34) domain.
结构域	The JAMM motif is essential for the protease activity of the CSN complex resulting in deneddylation of cullins. It constitutes the catalytic center of the complex.
细胞定位	Cytoplasm. Nucleus.

图片



All lanes : Anti-JAB1 antibody (ab12323) at 1/2500 dilution

Lane 1 : HEK293 whole cell lysate

Lane 2 : HCT116 whole cell lysate

Lane 3 : U2OS whole cell lysate

Lane 4 : Mouse embryonic fibroblast whole cell lysate

Lysates/proteins at 35 µg per lane.

Secondary

All lanes : HRP-conjugated Goat anti-rabbit polyclonal at 1/5000 dilution

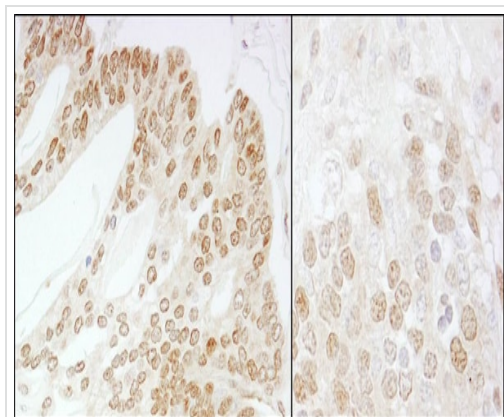
Developed using the ECL technique.

Performed under reducing conditions.

Predicted band size: 40 kDa

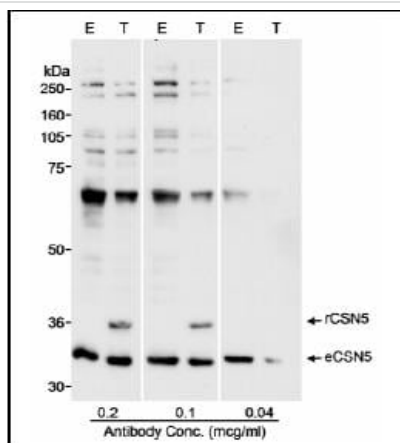
Observed band size: 35 kDa

Exposure time: 10 seconds



Immunohistochemistry (Formalin/PFA-fixed paraffin-embedded sections) - Anti-JAB1 antibody (ab12323)

Immunohistochemistry (Formalin/PFA-fixed paraffin-embedded sections) analysis of human prostate carcinoma (left) and mouse teratoma (right) tissues labelling JAB1 with ab12323 at 1/500 (2µg/ml). Detection: DAB.



Western blot - Anti-JAB1 antibody (ab12323)

Detection of Human CSN5 by Western Blot.

Samples: Whole cell lysate (50 mcg E; 25 mcg T) from HEK 293T cells that were mock transfected (E) or transfected with a CSN5 expression construct (T). *Antibody:* Affinity purified rabbit anti-CSN5 antibody BL1062 used at the indicated concentrations.

Detection: Chemiluminescence with a 10 second exposure.

Detection of Human CSN5 by Western Blot. *Samples:* Whole cell lysate (50 mcg E; 25 mcg T) from HEK 293T cells that were mock transfected (E) or transfected with a CSN5 expression construct (T). *Antibody:* Affinity purified rabbit anti-CSN5 antibody BL1062 used at the indicated concentrations. *Detection:* Chemiluminescence with a 10 second exposure.

Please note: All products are "FOR RESEARCH USE ONLY. NOT FOR USE IN DIAGNOSTIC PROCEDURES"

Our Abpromise to you: Quality guaranteed and expert technical support

- Replacement or refund for products not performing as stated on the datasheet
- Valid for 12 months from date of delivery
- Response to your inquiry within 24 hours
- We provide support in Chinese, English, French, German, Japanese and Spanish
- Extensive multi-media technical resources to help you
- We investigate all quality concerns to ensure our products perform to the highest standards

If the product does not perform as described on this datasheet, we will offer a refund or replacement. For full details of the Abpromise, please visit <https://www.abcam.cn/abpromise> or contact our technical team.

Terms and conditions

- Guarantee only valid for products bought direct from Abcam or one of our authorized distributors