

Anti-Islet 1 antibody [EP4182] - Neural Stem Cell Marker ab109517

重组 RabMAb

★★★★★ **6 Abreviews** **52 References** **11 图像**

概述

产品名称	Anti-Islet 1抗体[EP4182] - Neural Stem Cell Marker
描述	兔单克隆抗体[EP4182] to Islet 1 - Neural Stem Cell Marker
宿主	Rabbit
特异性	86% identities with Islet 2
经测试应用	适用于: ICC/IF, WB, IP, Flow Cyt (Intra)
种属反应性	与反应: Mouse, Chicken, Human
免疫原	Synthetic peptide. This information is proprietary to Abcam and/or its suppliers.
阳性对照	WB: K562, HeLa, Jurkat and SH-SY5Y cell lysates. IHC-Fr: Chicken hindbrain tissue. ICC/IF: U-87 MG cell line.
常规说明	<p>Insulin gene enhancer protein ISL-1 is a protein encoded by the ISL1 gene. Among other roles, ISL-1 plays a part in the embryogenesis of pancreatic islets of Langerhans and some models, deficiency have shown failure of neural tube motor neurons to differentiate.</p> <p>Rat: We have preliminary testing data to indicate this antibody may not react with these species. Please contact us for more information.</p> <p>This product is a recombinant monoclonal antibody, which offers several advantages including:</p> <ul style="list-style-type: none"> - High batch-to-batch consistency and reproducibility - Improved sensitivity and specificity - Long-term security of supply - Animal-free production <p>For more information see here.</p> <p>Our RabMAb[®] technology is a patented hybridoma-based technology for making rabbit monoclonal antibodies. For details on our patents, please refer to RabMAb[®] patents.</p>

性能

形式	Liquid
存放说明	Shipped at 4°C. Store at +4°C short term (1-2 weeks). Upon delivery aliquot. Store at -20°C. Avoid freeze / thaw cycle.

存储溶液	pH: 7.20 Preservative: 0.01% Sodium azide Constituents: 40% Glycerol, PBS, 0.05% BSA
纯度	Protein A purified
克隆	单克隆
克隆编号	EP4182
同种型	IgG

应用

The Abpromise guarantee **Abpromise™**承诺保证使用ab109517于以下的经测试应用

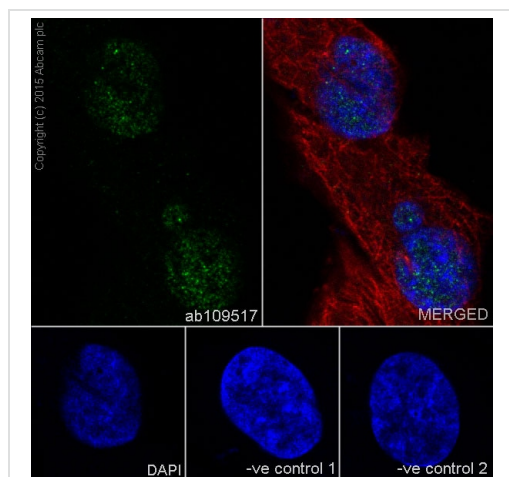
“应用说明”部分 下显示的仅为推荐的起始稀释度;实际最佳的稀释度/浓度应由使用者检定。

应用	Ab评论	说明
ICC/IF	★★★★★ (1)	1/250. For unpurified use at 1/50 - 1/100.
WB		1/10000 - 1/50000. Predicted molecular weight: 39 kDa.
IP		1/10 - 1/100.
Flow Cyt (Intra)		Use at an assay dependent concentration. ab172730 - Rabbit monoclonal IgG, is suitable for use as an isotype control with this antibody.

靶标

功能	Binds to one of the cis-acting domain of the insulin gene enhancer.
组织特异性	Expressed in subsets of neurons of the adrenal medulla and dorsal root ganglion, inner nuclear and ganglion cell layers in the retina, the pineal and some regions of the brain.
序列相似性	Contains 1 homeobox DNA-binding domain. Contains 2 LIM zinc-binding domains.
细胞定位	Nucleus.

图片

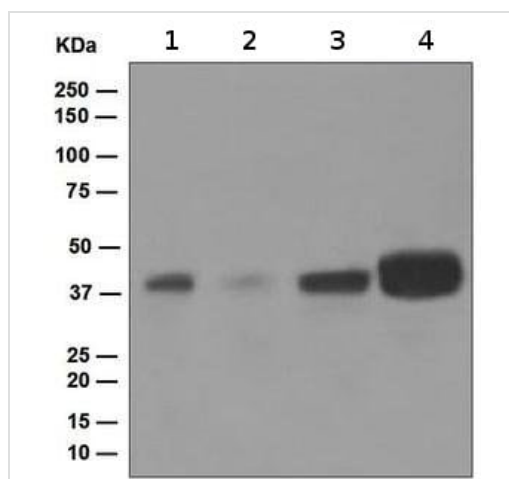


Immunocytochemistry/ Immunofluorescence - Anti-Islet 1 antibody [EP4182] - Neural Stem Cell Marker (ab109517)

Immunocytochemistry/Immunofluorescence analysis of SH-SY-5Y (human neuroblastoma) cells labelling Islet 1 with purified ab109517 at 1/250. Cells were fixed with 4% paraformaldehyde and permeabilized with 0.1% Triton X-100. **ab150077**, an Alexa Fluor® 488-conjugated goat anti-rabbit IgG (1/500) was used as the secondary antibody. DAPI (blue) was used as the nuclear counterstain. **ab7291**, a mouse anti-tubulin (1/1000) and **ab150120**, an Alexa Fluor® 594-conjugated goat anti-mouse IgG (1/1000) were also used.

Control 1: primary antibody (1/100) and secondary antibody, **ab150120**, an Alexa Fluor® 594-conjugated goat anti-mouse IgG (1/500).

Control 2: **ab7291** (1/1000) and secondary antibody, **ab150077**, an Alexa Fluor® 488-conjugated goat anti-rabbit IgG (1/500).



Western blot - Anti-Islet 1 antibody [EP4182] - Neural Stem Cell Marker (ab109517)

All lanes : Anti-Islet 1 antibody [EP4182] - Neural Stem Cell Marker (ab109517) at 1/10000 dilution (unpurified)

Lane 1 : K562 (Human chronic myelogenous leukemia cell line from bone marrow) cell lysate

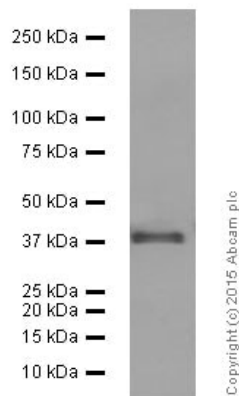
Lane 2 : HeLa (Human epithelial cell line from cervix adenocarcinoma) cell lysate

Lane 3 : Jurkat (Human T cell leukemia cell line from peripheral blood) cell lysate

Lane 4 : SH-SY5Y (Human neuroblastoma cell line from bone marrow) cell lysate

Lysates/proteins at 10 µg per lane.

Predicted band size: 39 kDa



Western blot - Anti-Islet 1 antibody [EP4182] -
Neural Stem Cell Marker (ab109517)

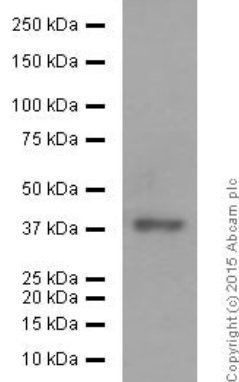
Anti-Islet 1 antibody [EP4182] - Neural Stem Cell Marker (ab109517) at 1/50000 dilution (purified) + RAW 264.7 (Mouse macrophage cell line transformed with Abelson murine leukemia virus) cell lysate at 20 µg

Secondary

Goat Anti-Rabbit IgG H&L (HRP) ([ab97051](#)) at 1/50000 dilution (Goat Anti-Rabbit IgG, (H+L), Peroxidase conjugated)

Predicted band size: 39 kDa

Blocking/Dilution buffer and concentration: 5% NFDM/TBST.



Western blot - Anti-Islet 1 antibody [EP4182] -
Neural Stem Cell Marker (ab109517)

Anti-Islet 1 antibody [EP4182] - Neural Stem Cell Marker (ab109517) at 1/10000 dilution (purified) + UMNSAH/DF-1 cell lysate at 20 µg

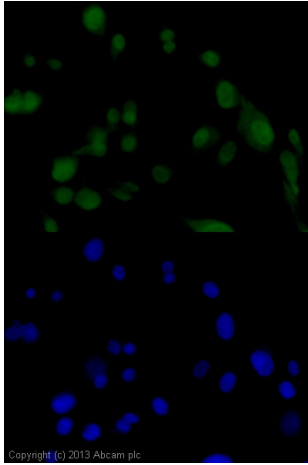
Secondary

Goat Anti-Rabbit IgG H&L (HRP) ([ab97051](#)) at 1/50000 dilution (Goat Anti-Rabbit IgG, (H+L), Peroxidase conjugated)

Predicted band size: 39 kDa

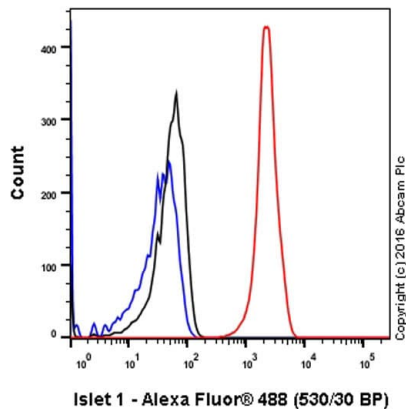
Blocking buffer and concentration: 5% NFDM/TBST.

Diluting buffer and concentration: 5% NFDM /TBST.



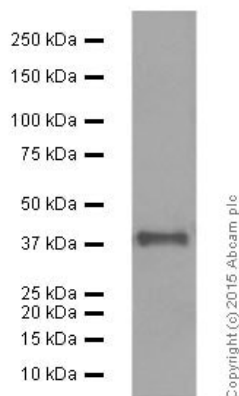
Immunocytochemistry/Immunofluorescence analysis of U-87 MG (Human glioblastoma-astrocytoma epithelial cell line) cells labeling Islet 1 with unpurified ab109517.

Immunocytochemistry/ Immunofluorescence - Anti-Islet 1 antibody [EP4182] - Neural Stem Cell Marker (ab109517)



Intracellular Flow Cytometry analysis of SH-SY5Y (human neuroblastoma) cells labeling Islet 1 with purified ab109517 at 1/50 dilution (10µg/ml) (red). Cells were fixed with 4% paraformaldehyde and permeabilized with 90% methanol. A Goat anti rabbit IgG (Alexa Fluor® 488) (1/2000) was used as the secondary antibody. Rabbit monoclonal IgG (Black) was used as the isotype control, cells without incubation with primary antibody and secondary antibody (Blue) was used as the unlabeled control.

Flow Cytometry (Intracellular) - Anti-Islet 1 antibody [EP4182] - Neural Stem Cell Marker (ab109517)



Anti-Islet 1 antibody [EP4182] - Neural Stem Cell Marker (ab109517) at 1/50000 dilution (purified) + HeLa (Human epithelial cell line from cervix adenocarcinoma) cell lysate at 20 µg

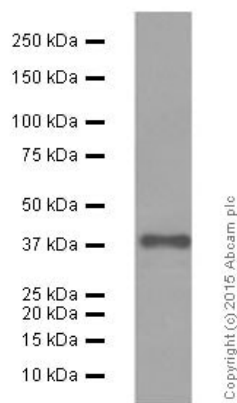
Secondary

Goat Anti-Rabbit IgG H&L (HRP) ([ab97051](#)) at 1/50000 dilution (Goat Anti-Rabbit IgG, (H+L), Peroxidase conjugated)

Predicted band size: 39 kDa

Western blot - Anti-Islet 1 antibody [EP4182] - Neural Stem Cell Marker (ab109517)

Blocking/Dilution buffer and concentration: 5% NFDM/TBST.



Western blot - Anti-Islet 1 antibody [EP4182] -
Neural Stem Cell Marker (ab109517)

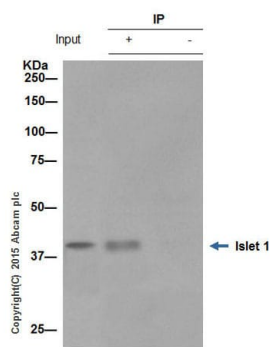
Anti-Islet 1 antibody [EP4182] - Neural Stem Cell Marker
(ab109517) at 1/50000 dilution (purified) + K562 (Human chronic
myelogenous leukemia cell line from bone marrow) cell lysate at 20
µg

Secondary

Goat Anti-Rabbit IgG H&L (HRP) ([ab97051](#)) at 1/50000 dilution
(Goat Anti-Rabbit IgG, (H+L), Peroxidase conjugated)

Predicted band size: 39 kDa

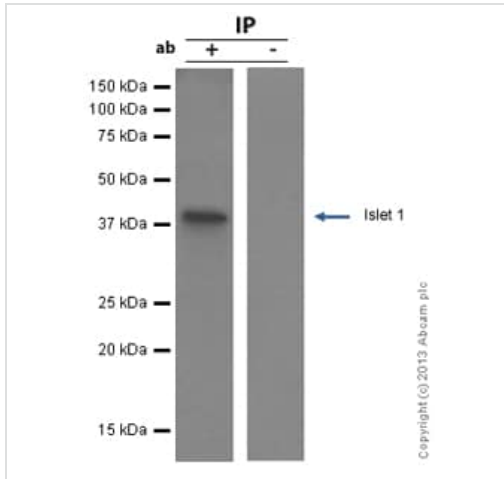
Blocking/Dilution buffer and concentration: 5% NFDM/TBST.



Immunoprecipitation - Anti-Islet 1 antibody [EP4182]
- Neural Stem Cell Marker (ab109517)

ab109517 (purified) at 1/30 immunoprecipitating Islet 1 in Jurkat
(Human T cell leukemia cell line from peripheral blood) whole cell
lysate. 10 µg of cell lysate was present in the input. For western
blotting, a HRP-conjugated Veriblot for IP Detection Reagent
([ab131366](#)) (1/1,500) was used for detection. A rabbit monoclonal
IgG ([ab172730](#)) was used instead of [ab128913](#) as a negative
control (Lane 3).

Blocking/Dilution buffer and concentration: 5% NFDM/TBST.



ab109517 (unpurified) immunoprecipitating Islet 1 in Jurkat (Human T cell leukemia cell line from peripheral blood) whole cell lysate.

Immunoprecipitation - Anti-Islet 1 antibody [EP4182]
- Neural Stem Cell Marker (ab109517)

Why choose a
recombinant antibody?



Anti-Islet 1 antibody [EP4182] - Neural Stem Cell
Marker (ab109517)

Please note: All products are "FOR RESEARCH USE ONLY. NOT FOR USE IN DIAGNOSTIC PROCEDURES"

Our Abpromise to you: Quality guaranteed and expert technical support

- Replacement or refund for products not performing as stated on the datasheet
- Valid for 12 months from date of delivery
- Response to your inquiry within 24 hours
- We provide support in Chinese, English, French, German, Japanese and Spanish
- Extensive multi-media technical resources to help you
- We investigate all quality concerns to ensure our products perform to the highest standards

If the product does not perform as described on this datasheet, we will offer a refund or replacement. For full details of the Abpromise, please visit <https://www.abcam.cn/abpromise> or contact our technical team.

Terms and conditions

- Guarantee only valid for products bought direct from Abcam or one of our authorized distributors