


Anti-IRF5 antibody ab21689

★★★★★ [1 Abreviews](#) [24 References](#) [3 图像](#)

概述

产品名称	Anti-IRF5抗体
描述	兔多克隆抗体to IRF5
宿主	Rabbit
经测试应用	适用于: WB 不适用于: IHC-P
种属反应性	与反应: Mouse, Rat, Human 预测可用于: Cow 
免疫原	Synthetic peptide corresponding to Human IRF5 aa 450 to the C-terminus (C terminal) conjugated to bovine serum albumin. (Peptide available as ab22411)
阳性对照	This antibody gave a positive signal in the following lysates: HeLa (Human epithelial carcinoma cell line) whole cell Liver (Mouse) Tissue Kidney (Mouse) Tissue Liver (Rat) Tissue
常规说明	<p>The Life Science industry has been in the grips of a reproducibility crisis for a number of years. Abcam is leading the way in addressing this with our range of recombinant monoclonal antibodies and knockout edited cell lines for gold-standard validation. Please check that this product meets your needs before purchasing.</p> <p>If you have any questions, special requirements or concerns, please send us an inquiry and/or contact our Support team ahead of purchase. Recommended alternatives for this product can be found below, along with publications, customer reviews and Q&As</p>

性能

形式	Liquid
存放说明	Shipped at 4°C. Store at +4°C short term (1-2 weeks). Upon delivery aliquot. Store at -20°C or -80°C. Avoid freeze / thaw cycle.
存储溶液	pH: 7.40 Preservative: 0.02% Sodium azide Constituent: PBS
	Batches of this product that have a concentration < 1mg/ml may have BSA added as a stabilising agent. If you would like information about the formulation of a specific lot, please contact our scientific support team who will be happy to help.

纯度	Immunogen affinity purified
克隆	多克隆
同种型	IgG

应用

The Abpromise guarantee **Abpromise™承诺保证使用ab21689于以下的经测试应用**

“应用说明”部分 下显示的仅为推荐的起始稀释度;实际最佳的稀释度/浓度应由使用者检定。

应用	Ab评论	说明
WB	 (1)	Use a concentration of 1 µg/ml. Detects a band of approximately 60 kDa (predicted molecular weight: 58 kDa).

应用说明 Is unsuitable for IHC-P.

靶标

疾病相关

Genetic variations in IRF5 are associated with susceptibility to inflammatory bowel disease type 14 (IBD14) [MIM:612245]. IBD14 is a chronic, relapsing inflammation of the gastrointestinal tract with a complex etiology. It is subdivided into Crohn disease and ulcerative colitis phenotypes. Crohn disease may affect any part of the gastrointestinal tract from the mouth to the anus, but most frequently it involves the terminal ileum and colon. Bowel inflammation is transmural and discontinuous; it may contain granulomas or be associated with intestinal or perianal fistulas. In contrast, in ulcerative colitis, the inflammation is continuous and limited to rectal and colonic mucosal layers; fistulas and granulomas are not observed. Both diseases include extraintestinal inflammation of the skin, eyes, or joints.

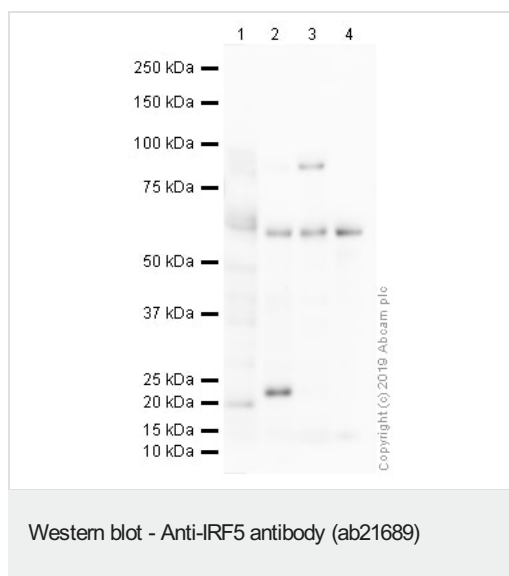
Genetic variations in IRF5 are associated with susceptibility to systemic lupus erythematosus type 10 (SLEB10) [MIM:612251]. Systemic lupus erythematosus (SLE) is a chronic, inflammatory and often febrile multisystemic disorder of connective tissue. It affects principally the skin, joints, kidneys and serosal membranes. It is thought to represent a failure of the regulatory mechanisms of the autoimmune system.

Genetic variations in IRF5 are a cause of susceptibility to rheumatoid arthritis (RA) [MIM:180300]. It is a systemic inflammatory disease with autoimmune features and a complex genetic component. It primarily affects the joints and is characterized by inflammatory changes in the synovial membranes and articular structures, widespread fibrinoid degeneration of the collagen fibers in mesenchymal tissues, and by atrophy and rarefaction of bony structures.

序列相似性	<p>Belongs to the IRF family.</p> <p>Contains 1 IRF tryptophan pentad repeat DNA-binding domain.</p>
-------	--

细胞定位 Nucleus.

图片



All lanes : Anti-IRF5 antibody (ab21689) at 1 µg/ml

Lane 1 : HeLa Whole Cell Lysate at 20 µg

Lane 2 : Mouse Liver Tissue Lysate at 10 µg

Lane 3 : Mouse Kidney Tissue Lysate at 10 µg

Lane 4 : Rat Liver Tissue Lysate at 10 µg

Secondary

All lanes : Peroxidase AffiniPure Goat Anti-Rabbit IgG (H+L) at 1/50000 dilution

Developed using the ECL technique.

Performed under reducing conditions.

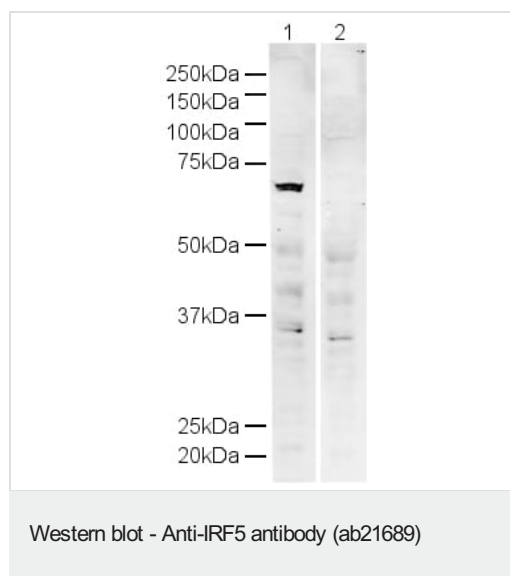
Predicted band size: 58 kDa

Observed band size: 60 kDa

Additional bands at: 25 kDa, 85 kDa. We are unsure as to the identity of these extra bands.

Exposure time: 8 minutes

This blot was produced using a 4-12% Bis-tris gel under the MOPS buffer system. The gel was run at 200V for 50 minutes before being transferred onto a Nitrocellulose membrane at 30V for 70 minutes. The membrane was then blocked for an hour using 2% Bovine Serum Albumin before being incubated with ab21689 overnight at 4°C. Antibody binding was detected using an anti-rabbit antibody conjugated to HRP, and visualised using ECL development solution **ab133406**.



All lanes : Anti-IRF5 antibody (ab21689) at 1 µg/ml

Lane 1 : HeLa whole cell lysate

Lane 2 : HeLa whole cell lysate with Human IRF5 peptide ([ab22411](#)) at 1 µg/ml

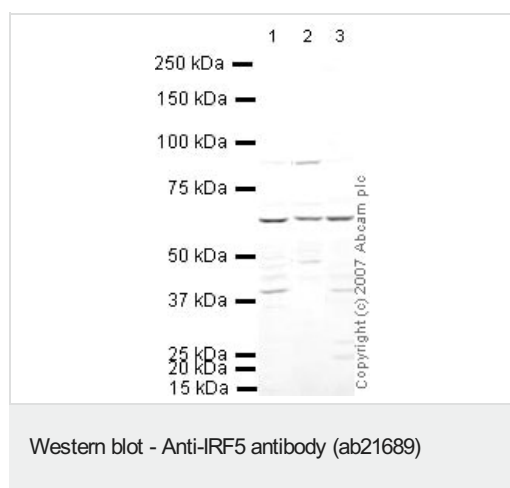
Lysates/proteins at 20 µg per lane.

Secondary

All lanes : Alexa Fluor Goat polyclonal to IgG (700) at 1/10000 dilution

Predicted band size: 58 kDa

Observed band size: 60 kDa



All lanes : Anti-IRF5 antibody (ab21689) at 1 µg/ml

Lane 1 : Liver (Mouse) Tissue Lysate - normal tissue

Lane 2 : Kidney (Mouse) Tissue Lysate

Lane 3 : Liver (Rat) Tissue Lysate

Lysates/proteins at 10 µg per lane.

Secondary

All lanes : IRDye 680 Conjugated Goat Anti-Rabbit IgG (H+L) at 1/10000 dilution

Performed under reducing conditions.

Predicted band size: 58 kDa

Observed band size: 60 kDa

Please note: All products are "FOR RESEARCH USE ONLY. NOT FOR USE IN DIAGNOSTIC PROCEDURES"

Our Abpromise to you: Quality guaranteed and expert technical support

- Replacement or refund for products not performing as stated on the datasheet
- Valid for 12 months from date of delivery
- Response to your inquiry within 24 hours

- We provide support in Chinese, English, French, German, Japanese and Spanish
- Extensive multi-media technical resources to help you
- We investigate all quality concerns to ensure our products perform to the highest standards

If the product does not perform as described on this datasheet, we will offer a refund or replacement. For full details of the Abpromise, please visit <https://www.abcam.cn/abpromise> or contact our technical team.

Terms and conditions

- Guarantee only valid for products bought direct from Abcam or one of our authorized distributors