

### Anti-IRF2BP2 antibody ab124163

★★★★☆ **4 Abreviews**   1 图像

#### 概述

产品名称	Anti-IRF2BP2抗体
描述	兔多克隆抗体to IRF2BP2
宿主	Rabbit
特异性	At least two isoforms of IRF2BP2 are known to exist; this antibody will detect both. This antibody is predicted to not cross-react with any FOXD4 protein family members.
经测试应用	<b>适用于:</b> WB
种属反应性	<b>与反应:</b> Mouse, Human
免疫原	Synthetic peptide corresponding to 18 amino acids near the C-terminus of Human IRF2BP2 (NP_892017).
阳性对照	HeLa whole cell lysate ( <b>ab150035</b> )
常规说明	<p>The Life Science industry has been in the grips of a reproducibility crisis for a number of years. Abcam is leading the way in addressing this with our range of recombinant monoclonal antibodies and knockout edited cell lines for gold-standard validation. Please check that this product meets your needs before purchasing.</p> <p>If you have any questions, special requirements or concerns, please send us an inquiry and/or contact our Support team ahead of purchase. Recommended alternatives for this product can be found below, along with publications, customer reviews and Q&amp;As</p>

#### 性能

形式	Liquid
存放说明	Shipped at 4°C. Store at +4°C short term (1-2 weeks). Upon delivery aliquot. Store at -20°C long term.
存储溶液	<p>pH: 7.2</p> <p>Preservative: 0.02% Sodium azide</p> <p>Constituent: 99% PBS</p>
纯度	Immunogen affinity purified
克隆	多克隆
同种型	IgG

## 应用

### The Abpromise guarantee

**Abpromise™**承诺保证使用ab124163于以下的经测试应用

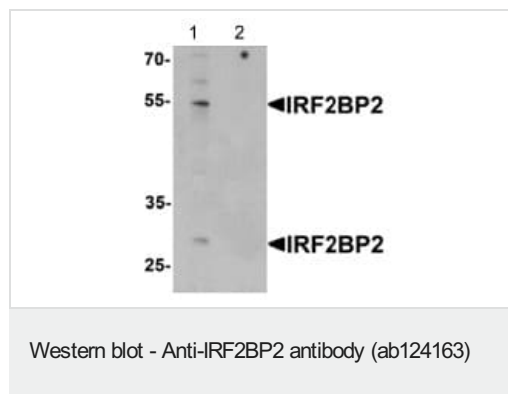
“应用说明”部分 下显示的仅为推荐的起始稀释度;实际最佳的稀释度/浓度应由使用者检定。

应用	Ab评论	说明
WB	★★★★☆ (4)	Use a concentration of 1 - 2 µg/ml. Predicted molecular weight: 61 kDa.

## 靶标

功能	Acts as a transcriptional repressor. Acts as a transcriptional corepressor in a IRF2-dependent manner. This repression is not mediated at least in part by histone deacetylase activities.
序列相似性	Belongs to the IRF2BP family.
结构域	The C-terminal RING-type zinc finger domain is necessary for interaction with BAP1.
细胞定位	Nucleus.

## 图片



**All lanes :** Anti-IRF2BP2 antibody (ab124163) at 1/1 dilution

**Lane 1 :** HeLa cell lysate

**Lane 2 :** HeLa cell lysate with blocking peptide

Lysates/proteins at 15 µg per lane.

**Predicted band size:** 61 kDa

**Please note:** All products are "FOR RESEARCH USE ONLY. NOT FOR USE IN DIAGNOSTIC PROCEDURES"

### Our Abpromise to you: Quality guaranteed and expert technical support

- Replacement or refund for products not performing as stated on the datasheet
- Valid for 12 months from date of delivery
- Response to your inquiry within 24 hours
- We provide support in Chinese, English, French, German, Japanese and Spanish
- Extensive multi-media technical resources to help you
- We investigate all quality concerns to ensure our products perform to the highest standards

If the product does not perform as described on this datasheet, we will offer a refund or replacement. For full details of the Abpromise, please visit <https://www.abcam.cn/abpromise> or contact our technical team.

## Terms and conditions

---

- Guarantee only valid for products bought direct from Abcam or one of our authorized distributors