

Anti-IP10 antibody ab9807

★★★★★ 9 Abreviews 33 References 2 图像

概述	
产品名称	Anti-IP10抗体
描述	兔多克隆抗体to IP10
宿主	Rabbit
经测试应用	适用于: WB, Sandwich ELISA
种属反应性	与反应: Rat, Human
免疫原	Recombinant full length protein corresponding to Human IP10. Highly pure (>98%) recombinant hIP-10 (human Interferon Inducible Protein 10) Database link: P02778
阳性对照	WB: Recombinant human IP10 protein (ab9810); Recombinant rat IP10 protein (ab75477)
常规说明	Although some customers have been successful in IHC we no longer batch test in this application. The Life Science industry has been in the grips of a reproducibility crisis for a number of years. Abcam is leading the way in addressing this with our range of recombinant monoclonal antibodies and knockout edited cell lines for gold-standard validation. Please check that this product meets your needs before purchasing. If you have any questions, special requirements or concerns, please send us an inquiry and/or contact our Support team ahead of purchase. Recommended alternatives for this product can be found below, along with publications, customer reviews and Q&As
性能	
形式	Lyophilized:Reconstitute with 200µl of sterile water.
存放说明	Shipped at 4°C. Store at +4°C short term (1-2 weeks). Upon delivery aliquot. Store at -20°C long term.
存储溶液	No preservative, sterile filtered
纯度	Immunogen affinity purified
克隆	多克隆
同种型	IgG
轻链类型	unknown

The Abpromise guarantee

Abpromise™承诺保证使用ab9807于以下的经测试应用

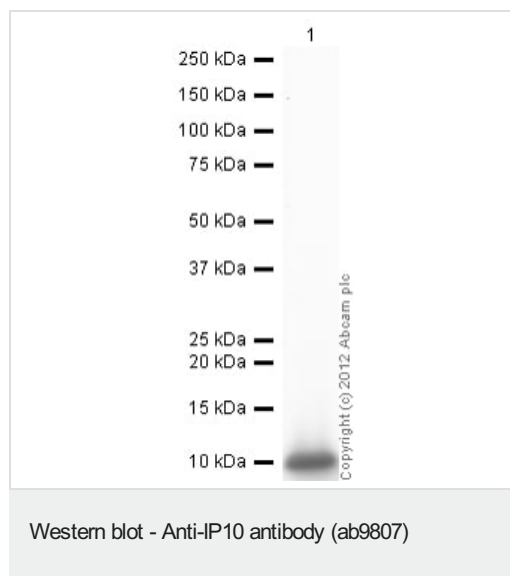
“应用说明”部分 下显示的仅为推荐的起始稀释度;实际最佳的稀释度/浓度应由使用者检定。

应用	Ab评论	说明
WB		Use at an assay dependent concentration. To detect hIP-10 by Western Blot analysis this antibody can be used at a concentration of 0.1 - 0.2 µg/ml. Used in conjunction with compatible secondary reagents the detection limit for recombinant hIP-10 is 1.5 - 3.0 ng/lane, under either reducing or non-reducing conditions.
Sandwich ELISA		Use at an assay dependent concentration. To detect hIP-10 by direct ELISA (using 100 µl/well antibody solution) a concentration of 0.5 - 2.0 µg/ml of this antibody is required. This antigen affinity purified antibody, in conjunction with biotinylated anti-IP10 antibody (ab271283), allows the detection of 0.2 - 0.4 ng/well of recombinant hIP-10.

靶标

功能	Chemotactic for monocytes and T-lymphocytes. Binds to CXCR3.
序列相似性	Belongs to the intercrine alpha (chemokine CxC) family.
翻译后修饰	CXCL10(1-73) is produced by proteolytic cleavage after secretion from keratinocytes.
细胞定位	Secreted.

图片



Anti-IP10 antibody (ab9807) at 1 µg/ml + Recombinant rat IP10 protein (**ab75477**) at 0.1 µg

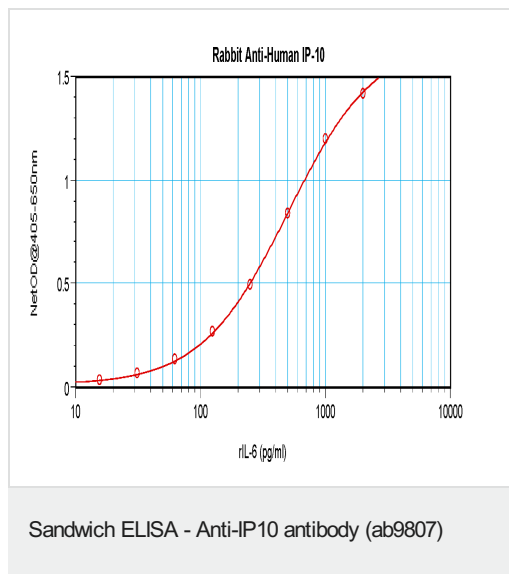
Secondary

Goat Anti-Rabbit IgG H&L (HRP) preadsorbed (**ab97080**) at 1/5000 dilution

Developed using the ECL technique.

Performed under reducing conditions.

Exposure time: 30 seconds



ab9807 detecting IP-10 by sandwich ELISA.

Please note: All products are "FOR RESEARCH USE ONLY. NOT FOR USE IN DIAGNOSTIC PROCEDURES"

Our Abpromise to you: Quality guaranteed and expert technical support

- Replacement or refund for products not performing as stated on the datasheet
- Valid for 12 months from date of delivery
- Response to your inquiry within 24 hours
- We provide support in Chinese, English, French, German, Japanese and Spanish
- Extensive multi-media technical resources to help you
- We investigate all quality concerns to ensure our products perform to the highest standards

If the product does not perform as described on this datasheet, we will offer a refund or replacement. For full details of the Abpromise, please visit <https://www.abcam.cn/abpromise> or contact our technical team.

Terms and conditions

- Guarantee only valid for products bought direct from Abcam or one of our authorized distributors