

Anti-Involucrin antibody ab53112

★★★★★ [7 Abreviews](#) [41 References](#) [3 图像](#)

概述

产品名称	Anti-Involucrin抗体
描述	兔多克隆抗体to Involucrin
宿主	Rabbit
经测试应用	适用于: ICC/IF, ELISA, WB, IHC-P
种属反应性	与反应: Human
免疫原	A synthetic peptide derived from human Involucrin.
常规说明	<p>The Life Science industry has been in the grips of a reproducibility crisis for a number of years. Abcam is leading the way in addressing this with our range of recombinant monoclonal antibodies and knockout edited cell lines for gold-standard validation. Please check that this product meets your needs before purchasing.</p> <p>If you have any questions, special requirements or concerns, please send us an inquiry and/or contact our Support team ahead of purchase. Recommended alternatives for this product can be found below, along with publications, customer reviews and Q&As</p>

性能

形式	Liquid
存放说明	Shipped at 4°C. Store at -20°C. Stable for 12 months at -20°C.
存储溶液	pH: 7.40 Preservative: 0.02% Sodium azide Constituents: 50% Glycerol, 0.87% Sodium chloride, PBS
纯度	Without Mg+2 and Ca+2
纯化说明	Immunogen affinity purified ab53112 was affinity purified from rabbit antiserum by affinity chromatography using epitope-specific immunogen.
克隆	多克隆
同种型	IgG

应用

The Abpromise guarantee

Abpromise™ 承诺保证使用 ab53112 于以下的经测试应用

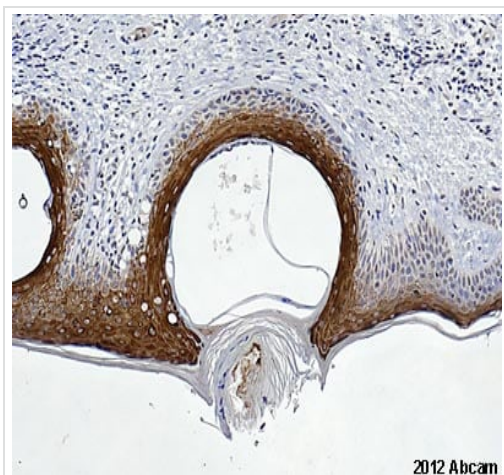
“应用说明”部分 下显示的仅为推荐的起始稀释度;实际最佳的稀释度/浓度应由使用者检定。

应用	Ab评论	说明
ICC/IF		Use at an assay dependent concentration. PubMed: 21067603
ELISA		Use at an assay dependent concentration.
WB		1/300 - 1/1000. Detects a band of approximately 68 kDa (predicted molecular weight: 68 kDa).
IHC-P	★★★★★ (5)	Use at an assay dependent concentration.

靶标

功能	Part of the insoluble cornified cell envelope (CE) of stratified squamous epithelia.
组织特异性	Keratinocytes of epidermis and other stratified squamous epithelia.
序列相似性	Belongs to the involucrin family.
翻译后修饰	Substrate of transglutaminase. Some glutamines and lysines are cross-linked to other involucrin molecules, to other proteins such as keratin, desmoplakin, periplakin and envoplakin, and to lipids like omega-hydroxyceramide.
细胞定位	Cytoplasm. Constituent of the scaffolding of the cornified envelope.

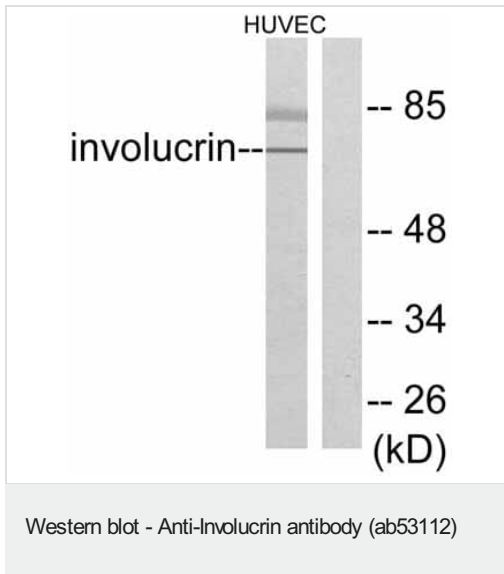
图片



ab53112 staining human skin sections by IHC-P. The tissue was fixed with formaldehyde and a heat mediated antigen retrieval step was performed with citric acid pH 6. Blocking of the sample was done with 1% BSA for 10 minutes at 21°C, followed by staining with ab53112 at 1/150 in TBS/BSA/azide for 16h at 21°C. A biotinylated goat anti-rabbit polyclonal antibody at 1/200 was used as the secondary antibody.

Immunohistochemistry (Formalin/PFA-fixed paraffin-embedded sections) - Anti-Involucrin antibody (ab53112)

This image is courtesy of an Abreview submitted by Carl Hobbs



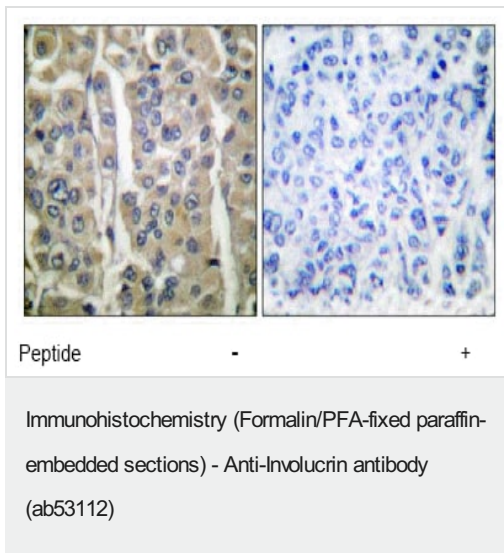
All lanes : Anti-Involucrin antibody (ab53112) at 1/300 dilution

Lane 1 : HuvEc cell extract

Lane 2 : HuvEc cell extract with immunising peptide

Predicted band size: 68 kDa

Observed band size: 68 kDa



ab53112 at 1/50 dilution staining Involucrin in human breast carcinoma by Immunohistochemistry, Paraffin embedded tissue, in the absence and presence of the immunising peptide.

Please note: All products are "FOR RESEARCH USE ONLY. NOT FOR USE IN DIAGNOSTIC PROCEDURES"

Our Abpromise to you: Quality guaranteed and expert technical support

- Replacement or refund for products not performing as stated on the datasheet
- Valid for 12 months from date of delivery
- Response to your inquiry within 24 hours
- We provide support in Chinese, English, French, German, Japanese and Spanish
- Extensive multi-media technical resources to help you
- We investigate all quality concerns to ensure our products perform to the highest standards

If the product does not perform as described on this datasheet, we will offer a refund or replacement. For full details of the Abpromise, please visit <https://www.abcam.cn/abpromise> or contact our technical team.

Terms and conditions

- Guarantee only valid for products bought direct from Abcam or one of our authorized distributors