

Anti-Integrin alpha 6 antibody [EPR18124] ab181551

敲除验证
重组
RabMAb

★★★★☆
[5 Abreviews](#)
[32 References](#)
[12 图像](#)

概述

产品名称	Anti-Integrin alpha 6抗体[EPR18124]
描述	兔单克隆抗体[EPR18124] to Integrin alpha 6
宿主	Rabbit
经测试应用	适用于: WB, IHC-P, IHC-Fr
种属反应性	与反应: Mouse, Rat, Human
免疫原	Synthetic peptide. This information is proprietary to Abcam and/or its suppliers.
阳性对照	WB: SW480, A549, F6 whole cell lysates; Mouse skin lysate and Rat skin lysate, Human fetal kidney tissue lysate, Mouse kidney and spleen tissue lysate, Rat spleen tissue lysate. IHC-P: Human breast tissue, Human endometrial cancer tissue, Mouse stomach tissue, Rat stomach tissue. IHC-Fr: Rat and mouse stomach tissues.
常规说明	<p>This product is a recombinant monoclonal antibody, which offers several advantages including:</p> <ul style="list-style-type: none"> - High batch-to-batch consistency and reproducibility - Improved sensitivity and specificity - Long-term security of supply - Animal-free production <p>For more information see here.</p> <p>Our RabMAb[®] technology is a patented hybridoma-based technology for making rabbit monoclonal antibodies. For details on our patents, please refer to RabMAb[®] patents.</p>

性能

形式	Liquid
存放说明	Shipped at 4°C. Store at +4°C short term (1-2 weeks). Upon delivery aliquot. Store at -20°C long term. Avoid freeze / thaw cycle.
存储溶液	Preservative: 0.01% Sodium azide Constituents: 59% PBS, 40% Glycerol, 0.05% BSA
纯度	Protein A purified
克隆	单克隆
克隆编号	EPR18124

同种型

IgG

应用

The Abpromise guarantee

Abpromise™承诺保证使用ab181551于以下的经测试应用

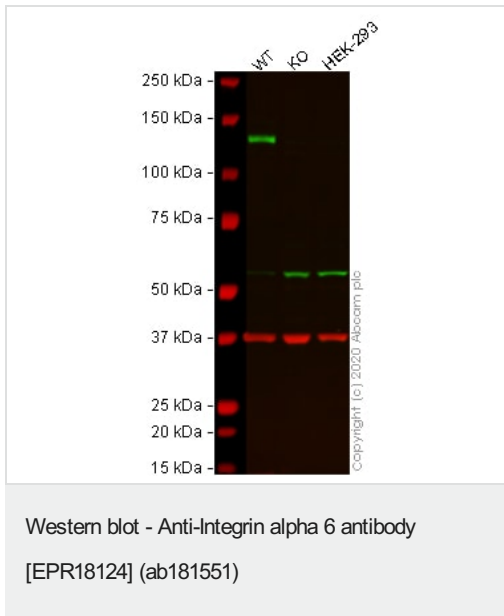
“应用说明”部分 下显示的仅为推荐的起始稀释度;实际最佳的稀释度/浓度应由使用者检定。

应用	Ab评论	说明
WB	★★★★★ (1)	1/2000. Detects a band of approximately 127 kDa (predicted molecular weight: 127 kDa).
IHC-P	★★★★★ (3)	1/500. Perform heat mediated antigen retrieval with Tris/EDTA buffer pH 9.0 before commencing with IHC staining protocol.
IHC-Fr	★★★★★ (1)	1/100.

靶标

功能	Integrin alpha-6/beta-1 is a receptor for laminin on platelets. Integrin alpha-6/beta-4 is a receptor for laminin in epithelial cells and it plays a critical structural role in the hemidesmosome (By similarity). ITGA6:ITGB4 binds to NRG1 (via EGF domain) and this binding is essential for NRG1-ERBB signaling (PubMed:20682778). ITGA6:ITGB4 binds to IGF1 and this binding is essential for IGF1 signaling (PubMed:22351760).
组织特异性	Integrin alpha-6/beta-4 is predominantly expressed by epithelia. Isoforms containing segment X1 are ubiquitously expressed. Isoforms containing segment X1X2 are expressed in heart, kidney, placenta, colon, duodenum, myoblasts and myotubes, and in a limited number of cell lines; they are always coexpressed with the ubiquitous isoform containing segment X1. In some tissues (e.g. Salivary gland), isoforms containing cytoplasmic segment A and isoforms containing segment B are detected while in others, only isoforms containing one cytoplasmic segment are found (segment A in epidermis and segment B in kidney).
疾病相关	Epidermolysis bullosa letalis, with pyloric atresia
序列相似性	Belongs to the integrin alpha chain family. Contains 7 FG-GAP repeats.
翻译后修饰	Isoforms containing segment A, but not segment B, are the major targets for PMA-induced phosphorylation. Phosphorylation occurs on 'Ser-1103' of isoform alpha-6X1X2A. Phosphorylation is not required for the induction of integrin alpha-6A/beta-1 high affinity but may reduce the affinity for ligand. In invasive prostate cancer ITGA6 undergoes PLAU-mediated cleavage at residues Arg-634-635-Arg in a time-dependent manner enhancing cell invasion and migration in vitro. Palmitoylation by DHHC3 enhances stability and cell surface expression.
细胞定位	Cell membrane. Cell membrane.

图片



All lanes : Anti-Integrin alpha 6 antibody [EPR18124] (ab181551) at 1/2000 dilution

Lane 1 : Wild-type SW480 cell lysate

Lane 2 : ITGA6 knockout SW480 cell lysate

Lane 3 : HEK-293 cell lysate

Lysates/proteins at 20 µg per lane.

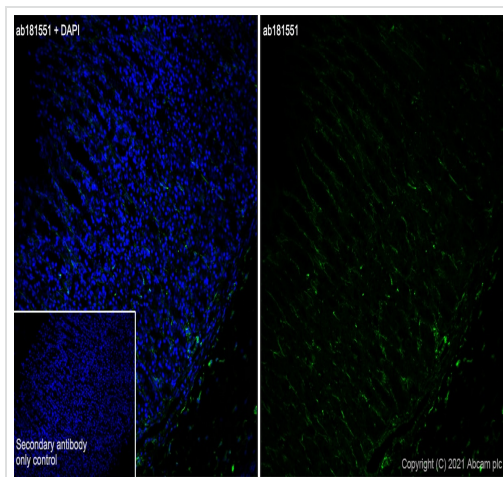
Performed under reducing conditions.

Predicted band size: 127 kDa

Observed band size: 130 kDa

Lanes 1 - 3: Merged signal (red and green). Green - ab181551 observed at 130 kDa. Red - loading control **ab8245** (Mouse anti-GAPDH antibody [6C5]) observed at 37kDa.

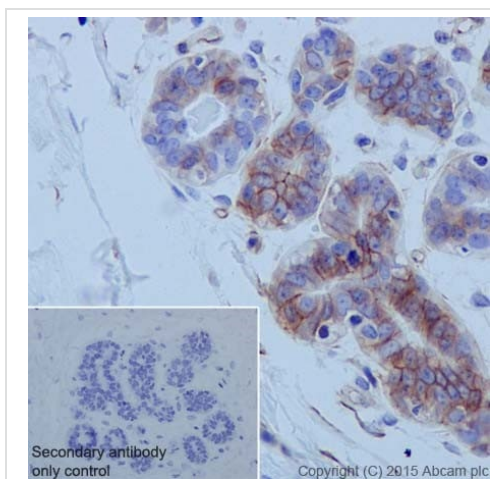
ab181551 was shown to react with Integrin alpha 6 in wild-type SW480 cells in western blot with loss of signal observed in ITGA6 knockout cell line **ab265838** (knockout cell lysate **ab256957**). Wild-type and ITGA6 knockout SW480 cell lysates were subjected to SDS-PAGE. Membranes were blocked in 3% milk in TBS-T (0.1% Tween®) before incubation with ab181551 and **ab8245** (Mouse anti-GAPDH antibody [6C5]) overnight at 4°C at a 1 in 2000 dilution and a 1 in 20000 dilution respectively. Blots were incubated with Goat anti-Rabbit IgG H&L (IRDye® 800CW) preabsorbed (**ab216773**) and Goat anti-Mouse IgG H&L (IRDye® 680RD) preabsorbed (**ab216776**) secondary antibodies at 1 in 20000 dilution for 1 hour at room temperature before imaging.



Immunohistochemistry (Frozen sections) - Anti-Integrin alpha 6 antibody [EPR18124] (ab181551)

Immunohistochemistry (Frozen sections) analysis of rat stomach tissue (4% PFA, 0.2% Triton x-100) labelling Integrin alpha 6 with **ab240252** at 1/100 dilution. **ab150077** Goat Anti-Rabbit IgG H&L (Alexa Fluor® 488) was used as the secondary antibody at 1/1000 dilution. Negative control using PBS instead of primary antibody (left). Counterstained with DAPI.

Positive staining was seen on rat stomach.



Immunohistochemistry (Formalin/PFA-fixed paraffin-embedded sections) - Anti-Integrin alpha 6 antibody [EPR18124] (ab181551)

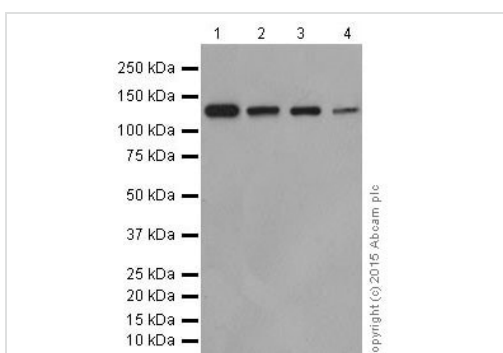
Immunohistochemical analysis of paraffin-embedded Human breast tissue labeling Integrin alpha 6 with ab181551 at 1/500 followed by Goat Anti-Rabbit IgG (HRP) at 1/500.

Membrane and cytoplasm staining on epithelial cells of Human breast tissue is observed.

Counter stained with Hematoxylin.

Negative control: Used PBS instead of primary antibody followed by Goat Anti-Rabbit IgG (HRP) at 1/500.

Perform heat mediated antigen retrieval with Tris/EDTA buffer pH 9.0 before commencing with IHC staining protocol.



Western blot - Anti-Integrin alpha 6 antibody [EPR18124] (ab181551)

All lanes : Anti-Integrin alpha 6 antibody [EPR18124] (ab181551) at 1/10000 dilution

Lane 1 : SW480 (Human colon adenocarcinoma cell line) whole cell lysate

Lane 2 : A549 (Human lung carcinoma) whole cell lysate

Lane 3 : Mouse skin lysate

Lane 4 : Rat skin lysate

Lysates/proteins at 20 µg per lane.

Secondary

All lanes : Goat Anti-Rabbit IgG, (H+L), Peroxidase conjugated at 1/1000 dilution

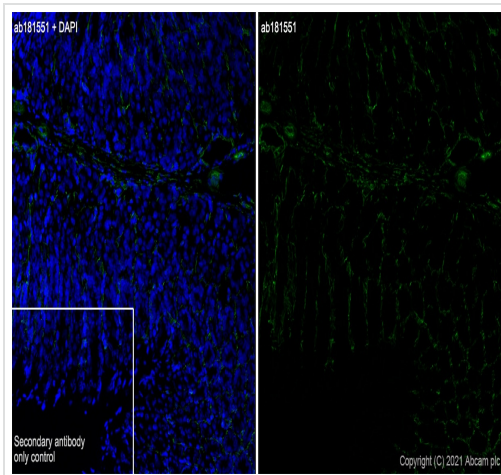
Developed using the ECL technique.

Predicted band size: 127 kDa

Observed band size: 127 kDa

Exposure time: 3 minutes

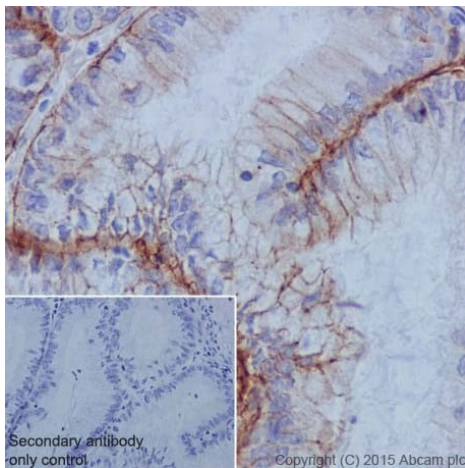
Blocking and diluting buffer was 5% NFDM /TBST.



Immunohistochemistry (Frozen sections) - Anti-Integrin alpha 6 antibody [EPR18124] (ab181551)

Immunohistochemistry (Frozen sections) analysis of mouse stomach tissue (4% PFA, 0.2% Triton x-100) labelling Integrin alpha 6 with **ab240252** at 1/100 dilution. **ab150077** Goat Anti-Rabbit IgG H&L (Alexa Fluor® 488) was used as the secondary antibody at 1/1000 dilution. Negative control using PBS instead of primary antibody (left). Counterstained with DAPI.

Positive staining was seen on mouse stomach.



Immunohistochemistry (Formalin/PFA-fixed paraffin-embedded sections) - Anti-Integrin alpha 6 antibody [EPR18124] (ab181551)

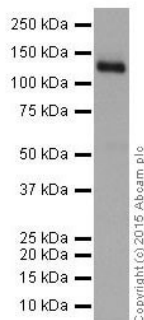
Immunohistochemical analysis of paraffin-embedded Human endometrial cancer tissue labeling Integrin alpha 6 with ab181551 at 1/500 followed by Goat Anti-Rabbit IgG (HRP) at 1/500.

Membrane and cytoplasm staining on tumor cells of Human endometrial cancer tissue is observed.

Counter stained with Hematoxylin.

Negative control: Used PBS instead of primary antibody followed by Goat Anti-Rabbit IgG (HRP) at 1/500.

Perform heat mediated antigen retrieval with Tris/EDTA buffer pH 9.0 before commencing with IHC staining protocol.



Western blot - Anti-Integrin alpha 6 antibody
[EPR18124] (ab181551)

Anti-Integrin alpha 6 antibody [EPR18124] (ab181551) at 1/2000 dilution + Human fetal kidney tissue lysate at 10 µg

Secondary

Anti-Rabbit IgG (HRP), specific to the non-reduced form of IgG at 1/1000 dilution

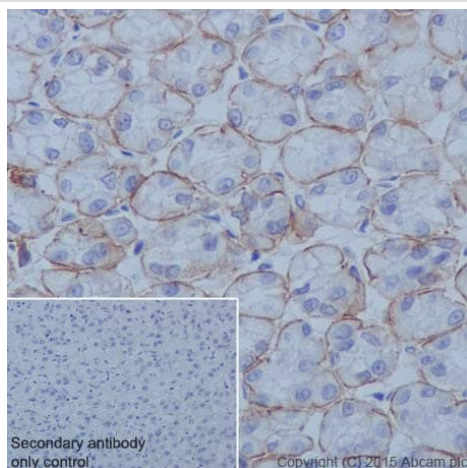
Developed using the ECL technique.

Predicted band size: 127 kDa

Observed band size: 127 kDa

Exposure time: 3 minutes

Blocking and diluting buffer was 5% NFDM /TBST.



Immunohistochemistry (Formalin/PFA-fixed paraffin-embedded sections) - Anti-Integrin alpha 6 antibody
[EPR18124] (ab181551)

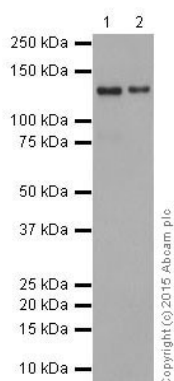
Immunohistochemical analysis of paraffin-embedded Rat stomach tissue labeling Integrin alpha 6 with ab181551 at 1/500 followed by Goat Anti-Rabbit IgG (HRP) at 1/500.

Basement membrane staining on tumor cells of Rat stomach tissue is observed.

Counter stained with Hematoxylin.

Negative control: Used PBS instead of primary antibody followed by Goat Anti-Rabbit IgG (HRP) at 1/500.

Perform heat mediated antigen retrieval with Tris/EDTA buffer pH 9.0 before commencing with IHC staining protocol.



Western blot - Anti-Integrin alpha 6 antibody
[EPR18124] (ab181551)

All lanes : Anti-Integrin alpha 6 antibody [EPR18124] (ab181551)
at 1/2000 dilution

Lane 1 : Mouse kidney tissue lysate

Lane 2 : Mouse spleen tissue lysate

Lysates/proteins at 10 µg per lane.

Secondary

All lanes : Goat Anti-Rabbit IgG, (H+L), Peroxidase conjugated at
1/1000 dilution

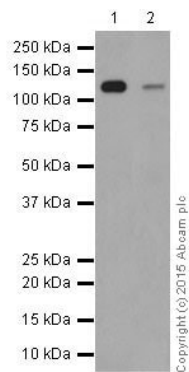
Developed using the ECL technique.

Predicted band size: 127 kDa

Observed band size: 127 kDa

Exposure time: 10 seconds

Blocking and diluting buffer was 5% NFDM /TBST



Western blot - Anti-Integrin alpha 6 antibody
[EPR18124] (ab181551)

All lanes : Anti-Integrin alpha 6 antibody [EPR18124] (ab181551)
at 1/10000 dilution

Lane 1 : F9 (mouse embryo testicular cancer cell line) whole cell
lysate

Lane 2 : Rat spleen tissue lysate

Lysates/proteins at 10 µg per lane.

Secondary

All lanes : Goat Anti-Rabbit IgG, (H+L), Peroxidase conjugated at
1/1000 dilution

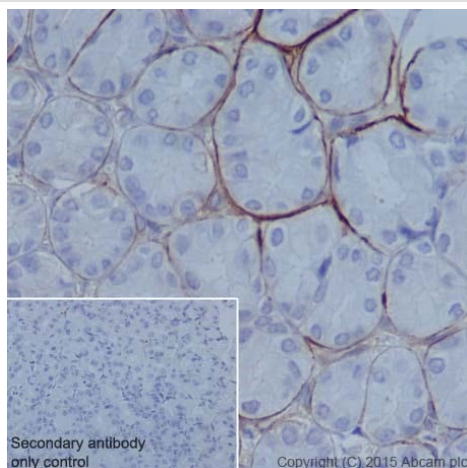
Developed using the ECL technique.

Predicted band size: 127 kDa

Observed band size: 127 kDa

Exposure time: 3 minutes

Blocking and diluting buffer was 5% NFDM /TBST



Immunohistochemistry (Formalin/PFA-fixed paraffin-
embedded sections) - Anti-Integrin alpha 6 antibody
[EPR18124] (ab181551)

Immunohistochemical analysis of paraffin-embedded Mouse
stomach tissue labeling Intergrin alpha 6 with ab181551 at 1/500
followed by Goat Anti-Rabbit IgG (HRP) at 1/500.

Basement membrane staining on tumor cells of Mouse stomach
tissue is observed.

Counter stained with Hematoxylin.

Negative control: Used PBS instead of primary antibody followed by
Goat Anti-Rabbit IgG (HRP) at 1/500.

Perform heat mediated antigen retrieval with Tris/EDTA buffer pH
9.0 before commencing with IHC staining protocol.

Why choose a recombinant antibody?



Research with confidence
Consistent and reproducible results



Long-term and scalable supply
Recombinant technology



Success from the first experiment
Confirmed specificity



Ethical standards compliant
Animal-free production

Anti-Integrin alpha 6 antibody [EPR18124]
(ab181551)

Please note: All products are "FOR RESEARCH USE ONLY. NOT FOR USE IN DIAGNOSTIC PROCEDURES"

Our Abpromise to you: Quality guaranteed and expert technical support

- Replacement or refund for products not performing as stated on the datasheet
- Valid for 12 months from date of delivery
- Response to your inquiry within 24 hours
- We provide support in Chinese, English, French, German, Japanese and Spanish
- Extensive multi-media technical resources to help you
- We investigate all quality concerns to ensure our products perform to the highest standards

If the product does not perform as described on this datasheet, we will offer a refund or replacement. For full details of the Abpromise, please visit <https://www.abcam.cn/abpromise> or contact our technical team.

Terms and conditions

- Guarantee only valid for products bought direct from Abcam or one of our authorized distributors