

Anti-Integrin alpha 3 antibody [J143] ab11767

4 References [1 图像](#)

概述

产品名称	Anti-Integrin alpha 3抗体[J143]
描述	小鼠单克隆抗体[J143] to Integrin alpha 3
宿主	Mouse
特异性	This antibody recognizes the alpha 3 subunit of VLA3 (ECMRI - extracellular matrix receptor I, URO1), which has been shown to be related to the chicken fibronectin/laminin receptor. VLA proteins are part of the integrin family of cell adhesion molecules, and the distribution of VLA3 in cells and tissues suggests a possible relationship with cellular adhesion. This antibody detects glycoproteins of 140, 120 and 30kDa.
经测试应用	适用于: ICC/IF
种属反应性	与反应: Human
免疫原	Tissue, cells or virus corresponding to Human Integrin alpha 3. developed using the 253J Bladder cancer cell line Database link: P26006
阳性对照	Kidney.
常规说明	

The URO panel of antibodies was developed to immuno-anatomically dissect the nephron from glomerulus to bladder urothelium - these antibodies detect various cell surface antigens specific to segments of the renal tubule. Several have been shown to occur as tissue related markers of renal cancers. This antibody reacts predominantly with adherent cell types and is absent from cells growing in suspension, e.g. leukemia, lymphoma, lymphoblastoid, or other hematopoietic cell lines. In tissues, the URO1 antigen is expressed by glomeruli, the basal layer of transitional epithelium and skin, and the basement membrane of glands. All bladder tumors express URO1, as do most kidney tumors and other epithelial tumors (e.g. colon, ovary, lung and breast). Astrocytoma, melanoma, sarcoma, and lymphoma specimens are negative for URO1 expression.

The Life Science industry has been in the grips of a reproducibility crisis for a number of years. Abcam is leading the way in addressing this with our range of recombinant monoclonal antibodies and knockout edited cell lines for gold-standard validation. Please check that this product meets your needs before purchasing.

If you have any questions, special requirements or concerns, please send us an inquiry and/or contact our Support team ahead of purchase. Recommended alternatives for this product can be found below, along with publications, customer reviews and Q&As

性能

形式	Liquid
存放说明	Shipped at 4°C. Store at +4°C short term (1-2 weeks). Upon delivery aliquot. Store at -20°C or -80°C. Avoid freeze / thaw cycle.
存储溶液	Preservative: 0.1% Sodium azide Constituents: PBS, 1% BSA
纯度	Tissue culture supernatant
Primary antibody说明	The URO panel of antibodies was developed to immuno-anatomically dissect the nephron from glomerulus to bladder urothelium - these antibodies detect various cell surface antigens specific to segments of the renal tubule. Several have been shown to occur as tissue related markers of renal cancers. This antibody reacts predominantly with adherent cell types and is absent from cells growing in suspension, e.g. leukemia, lymphoma, lymphoblastoid, or other hematopoietic cell lines. In tissues, the URO1 antigen is expressed by glomeruli, the basal layer of transitional epithelium and skin, and the basement membrane of glands. All bladder tumors express URO1, as do most kidney tumors and other epithelial tumors (e.g. colon, ovary, lung and breast). Astrocytoma, melanoma, sarcoma, and lymphoma specimens are negative for URO1 expression.
克隆	单克隆
克隆编号	J143
同种型	IgG1

应用

The Abpromise guarantee **Abpromise™**承诺保证使用ab11767于以下的经测试应用

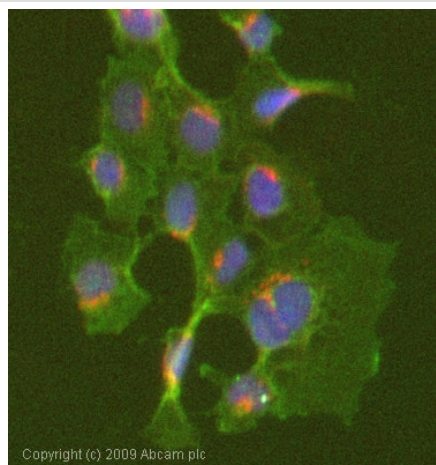
“应用说明”部分下显示的仅为推荐的起始稀释度;实际最佳的稀释度/浓度应由使用者检定。

应用	Ab评论	说明
ICC/IF		1/40.

靶标

功能	Integrin alpha-3/beta-1 is a receptor for fibronectin, laminin, collagen, epiligrin, thrombospondin and CSPG4. Alpha-3/beta-1 may mediate with LGALS3 the stimulation by CSPG4 of endothelial cells migration.
组织特异性	Isoform alpha-3A is widely expressed. Isoform alpha-3B is expressed in brain and heart. In brain, both isoforms are exclusively expressed on vascular smooth muscle cells, whereas in heart isoform alpha-3A is strongly expressed on vascular smooth muscle cells, isoform alpha-3B is detected only on endothelial vein cells.
序列相似性	Belongs to the integrin alpha chain family. Contains 7 FG-GAP repeats.
翻译后修饰	Isoform alpha-3A, but not isoform alpha-3B, is phosphorylated on serine residues. Phosphorylation increases after phorbol 12-myristate 13-acetate stimulation. Isoform alpha-3A is phosphorylated on Tyr-1051.
细胞定位	Membrane.

图片



ICC/IF image of ab11767 stained Hek293 cells. The cells were 4% PFA fixed (10 min) and then incubated in 1%BSA / 10% normal goat serum / 0.3M glycine in 0.1% PBS-Tween for 1h to permeabilise the cells and block non-specific protein-protein interactions. The cells were then incubated with the antibody (ab11767, 1/1000 dilution) overnight at +4°C. The secondary antibody (green) was Alexa Fluor® 488 goat anti-mouse IgG (H+L) used at a 1/1000 dilution for 1h. Alexa Fluor® 594 WGA was used to label plasma membranes (red) at a 1/200 dilution for 1h. DAPI was used to stain the cell nuclei (blue) at a concentration of 1.43µM.

Immunocytochemistry/ Immunofluorescence - Anti-Integrin alpha 3 antibody [J143] (ab11767)

Please note: All products are "FOR RESEARCH USE ONLY. NOT FOR USE IN DIAGNOSTIC PROCEDURES"

Our Abpromise to you: Quality guaranteed and expert technical support

- Replacement or refund for products not performing as stated on the datasheet
- Valid for 12 months from date of delivery
- Response to your inquiry within 24 hours
- We provide support in Chinese, English, French, German, Japanese and Spanish
- Extensive multi-media technical resources to help you
- We investigate all quality concerns to ensure our products perform to the highest standards

If the product does not perform as described on this datasheet, we will offer a refund or replacement. For full details of the Abpromise, please visit <https://www.abcam.cn/abpromise> or contact our technical team.

Terms and conditions

- Guarantee only valid for products bought direct from Abcam or one of our authorized distributors