

Anti-Integrin alpha 2+beta 1 antibody [P1E6] ab24697

19 References **2 图像**

概述

产品名称	Anti-Integrin alpha 2+beta 1 抗体[P1E6]
描述	小鼠单克隆抗体[P1E6] to Integrin alpha 2+beta 1
宿主	Mouse
经测试应用	适用于: Flow Cyt (Intra), ICC/IF
种属反应性	与反应: Human
免疫原	Tissue, cells or virus corresponding to Integrin alpha 2+beta 1. HT1080 fibrosarcoma cells.
阳性对照	ICC/IF: HepG2 cells. Flow Cyt (Intra): HT1080 cells.
常规说明	<p>In immunofluorescence, ab24697 can be used to detect $\alpha 2$ in collagen dependent focal adhesions.</p> <p>This antibody clone is manufactured by Abcam. If you require a custom buffer formulation or conjugation for your experiments, please contact orders@abcam.com.</p> <p>The Life Science industry has been in the grips of a reproducibility crisis for a number of years. Abcam is leading the way in addressing this with our range of recombinant monoclonal antibodies and knockout edited cell lines for gold-standard validation. Please check that this product meets your needs before purchasing.</p> <p>If you have any questions, special requirements or concerns, please send us an inquiry and/or contact our Support team ahead of purchase. Recommended alternatives for this product can be found below, along with publications, customer reviews and Q&As</p>

性能

形式	Liquid
存放说明	Shipped at 4°C. Upon delivery aliquot and store at -20°C. Avoid freeze / thaw cycles.
存储溶液	<p>pH: 7.40</p> <p>Preservative: 0.02% Sodium azide</p> <p>Constituents: PBS, 6.97% L-Arginine</p>
纯度	Protein G purified
Primary antibody说明	<p>ab24697 is effective in blocking adhesion cells to collagen coated surfaces. It immunoprecipitates the $\alpha 2$ subunit (reducing) or $\alpha 2$ complexed with $\beta 1$ from surface labeled cell lysates (non-reducing). In immunofluorescence, this antibody can be used to detect $\alpha 2$ in collagen dependent focal adhesions.</p>

克隆	单克隆
克隆编号	P1E6
同种型	IgG1

应用

The Abpromise guarantee

Abpromise™承诺保证使用ab24697于以下的经测试应用

“应用说明”部分 下显示的仅为推荐的起始稀释度;实际最佳的稀释度/浓度应由使用者检定。

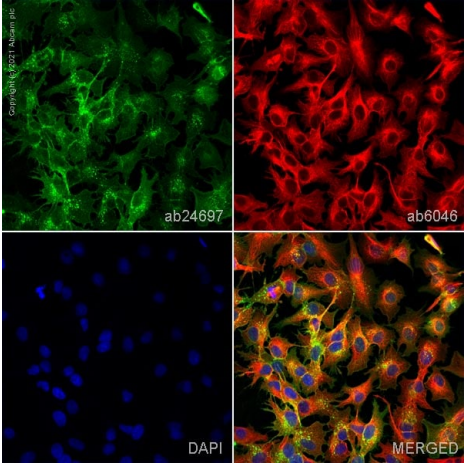
应用	Ab评论	说明
Flow Cyt (Intra)		Use 1µg for 10 ⁶ cells. (Also PMID - 19780039) ab170190 - Mouse monoclonal IgG1, is suitable for use as an isotype control with this antibody.
ICC/IF		Use a concentration of 5 - 10 µg/ml.

靶标

细胞定位

Cell Membrane; single-pass type I membrane protein

图片

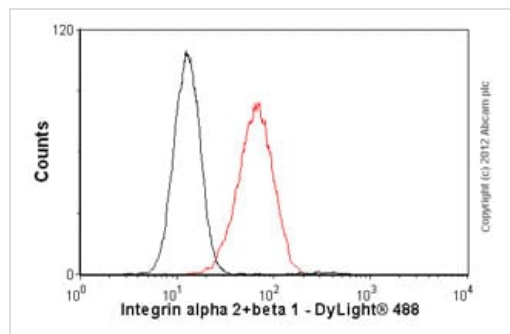


Immunocytochemistry/ Immunofluorescence - Anti-Integrin alpha 2+beta 1 antibody [P1E6] (ab24697)

ab24697 staining Integri alpha 2 + beta 1 in HepG2 cells. The cells were fixed with 4% paraformaldehyde (10 min), permeabilized with 0.1% PBS-Tween for 5 minutes and then blocked with 1% BSA/10% normal goat serum/0.3M glycine in 0.1%PBS-Tween for 1h. The cells were then incubated overnight at 4°C with ab24697 at 5µg/ml and **ab6046**, Rabbit polyclonal to beta Tubulin - Loading Control. Cells were then incubated with **ab150117**, Goat polyclonal Secondary Antibody to Mouse IgG H&L (Alexa Fluor® 488) preadsorbed at 1/1000 dilution (shown in green) and **ab150080**, Goat polyclonal Secondary Antibody to Rabbit IgG - H&L (Alexa Fluor® 594) at 1/1000 dilution (shown in pseudocolour red). Nuclear DNA was labelled with DAPI (shown in blue).

Also suitable in cells fixed with 100% methanol (5 min).

Image was acquired with a confocal microscope (Leica-Microsystems TCS SP8) and a single confocal section is shown.



Flow Cytometry (Intracellular) - Anti-Integrin alpha 2+beta 1 antibody [P1E6] (ab24697)

Overlay histogram showing HT1080 cells stained with ab24697 (red line). The cells were fixed with 4% paraformaldehyde (10 min) and incubated in 1x PBS / 10% normal goat serum / 0.3M glycine to block non-specific protein-protein interactions. The cells were then incubated with the antibody (ab24697, 1 µg/1x10⁶ cells) for 30 min at 22°C. The secondary antibody used was a goat **anti-mouse DyLight® 488** (IgG; H+L) (**ab96879**) at 1/500 dilution for 30 min at 22°C. Isotype control antibody (black line) was mouse IgG1 [ICIGG1] (**ab91353**, 2 µg/1x10⁶ cells) used under the same conditions. Acquisition of >5,000 events was performed. This antibody gave a positive result in 80% methanol (5 min) fixed HT1080 cells used under the same conditions.

Please note that Abcam do not have any data for use of this antibody on non-fixed cells. We welcome any customer feedback.

Please note: All products are "FOR RESEARCH USE ONLY. NOT FOR USE IN DIAGNOSTIC PROCEDURES"

Our Abpromise to you: Quality guaranteed and expert technical support

- Replacement or refund for products not performing as stated on the datasheet
- Valid for 12 months from date of delivery
- Response to your inquiry within 24 hours
- We provide support in Chinese, English, French, German, Japanese and Spanish
- Extensive multi-media technical resources to help you
- We investigate all quality concerns to ensure our products perform to the highest standards

If the product does not perform as described on this datasheet, we will offer a refund or replacement. For full details of the Abpromise, please visit <https://www.abcam.cn/abpromise> or contact our technical team.

Terms and conditions

- Guarantee only valid for products bought direct from Abcam or one of our authorized distributors