

# Anti-Insulin Receptor beta (phospho Y1185) antibody ab203278

[3 References](#) [2 图像](#)

### 概述

产品名称	Anti-Insulin Receptor beta (phospho Y1185)抗体
描述	兔多克隆抗体to Insulin Receptor beta (phospho Y1185)
宿主	Rabbit
经测试应用	适用于: IHC-P
种属反应性	与反应: Human
免疫原	Synthetic peptide within Human Insulin Receptor beta aa 1150-1250 (phospho Y1185) conjugated to keyhole limpet haemocyanin. The exact immunogen sequence used to generate this antibody is proprietary information. If additional detail on the immunogen is needed to determine the suitability of the antibody for your needs, please <b>contact</b> our Scientific Support team to discuss your requirements. Database link: <a href="#">P06213</a>

 [Run BLAST with](#)

 [Run BLAST with](#)

### 常规说明

The Life Science industry has been in the grips of a reproducibility crisis for a number of years. Abcam is leading the way in addressing this with our range of recombinant monoclonal antibodies and knockout edited cell lines for gold-standard validation. Please check that this product meets your needs before purchasing.

If you have any questions, special requirements or concerns, please send us an inquiry and/or contact our Support team ahead of purchase. Recommended alternatives for this product can be found below, along with publications, customer reviews and Q&As

### 性能

形式	Liquid
存放说明	Shipped at 4°C. Store at +4°C short term (1-2 weeks). Upon delivery aliquot. Store at -20°C long term. Avoid freeze / thaw cycle.
存储溶液	pH: 7.40 Preservative: 0.02% Proclin 300 Constituents: 50% Glycerol (glycerin, glycerine), 1% BSA, 48.98% TBS, 1X
纯度	Protein A purified
克隆	多克隆
同种型	IgG

## 应用

### The Abpromise guarantee

**Abpromise™** 承诺保证使用 ab203278 于以下的经测试应用

“应用说明”部分 下显示的仅为推荐的起始稀释度;实际最佳的稀释度/浓度应由使用者检定。

应用	Ab评论	说明
IHC-P		1/100 - 1/500. Perform heat mediated antigen retrieval with citrate buffer pH 6 before commencing with IHC staining protocol. Use at 1/50 - 1/200 with fluorescent detection methods.

## 靶标

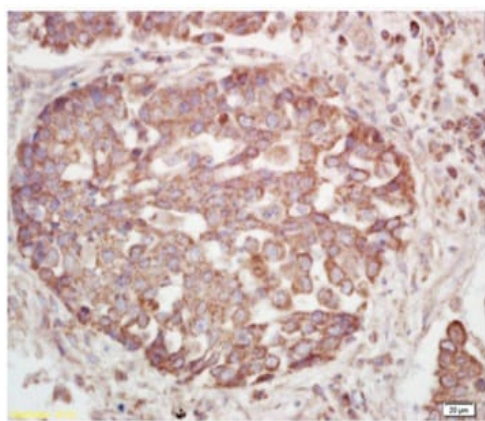
### 相关性

Insulin receptor mediates the biological activities of insulin by regulating multiple signaling pathways through activation of a series of phosphorylation cascades. The human insulin receptor is a heterotetrameric membrane glycoprotein consisting of disulfide-linked subunits in a  $\beta$ - $\alpha$ - $\alpha$ - $\beta$  configuration. The  $\beta$ -subunit (95kDa) possesses a single transmembrane domain with tyrosine kinase activity, whereas the  $\alpha$ -subunit (135kDa) is completely extracellular. The alpha subunits each contain insulin binding sites and are entirely extracellular in localization. The beta subunits each possess an extracellular domain, a single transmembrane domain, and a cytoplasmic tyrosine kinase domain. Binding of insulin to the alpha subunits induces a conformation change in the receptor which activates the kinase domain, stimulating tyrosine autophosphorylation of the receptor and tyrosine phosphorylation of at least five different insulin receptor substrates designated IRS-1-4, and Shc.

### 细胞定位

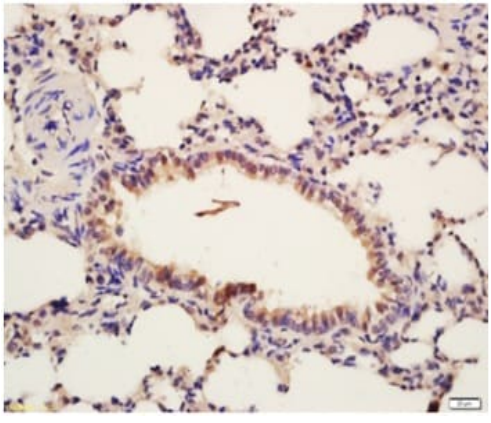
Membrane; Single pass type I membrane protein.

## 图片



Immunohistochemical analysis of formalin-fixed and paraffin embedded human lung tissue labeling Insulin Receptor beta (phospho Y1185) using ab203278 at 1/200, followed by secondary detection and DAB staining.

Immunohistochemistry (Formalin/PFA-fixed paraffin-embedded sections) - Anti-Insulin Receptor beta (phospho Y1185) antibody (ab203278)



Immunohistochemistry (Formalin/PFA-fixed paraffin-embedded sections) - Anti-Insulin Receptor beta (phospho Y1185) antibody (ab203278)

Immunohistochemical analysis of formalin-fixed and paraffin embedded tissue labeling Insulin Receptor beta (phospho Y1185) using ab203278 at 1/200, followed by secondary detection and DAB staining.

**Please note:** All products are "FOR RESEARCH USE ONLY. NOT FOR USE IN DIAGNOSTIC PROCEDURES"

### Our Abpromise to you: Quality guaranteed and expert technical support

---

- Replacement or refund for products not performing as stated on the datasheet
- Valid for 12 months from date of delivery
- Response to your inquiry within 24 hours
- We provide support in Chinese, English, French, German, Japanese and Spanish
- Extensive multi-media technical resources to help you
- We investigate all quality concerns to ensure our products perform to the highest standards

If the product does not perform as described on this datasheet, we will offer a refund or replacement. For full details of the Abpromise, please visit <https://www.abcam.cn/abpromise> or contact our technical team.

### Terms and conditions

---

- Guarantee only valid for products bought direct from Abcam or one of our authorized distributors